

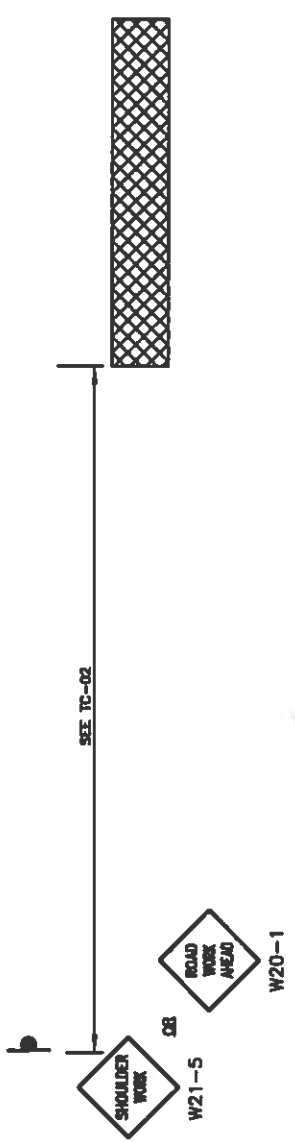
SHOULDER

SHOULDER



SHOULDER

SHOULDER



NOTES

1. SEE TC-01 FOR SIGN DESCRIPTION. ALL WARNING SIGNS SHALL HAVE A BLACK LEGEND AND BORDER ON AN ORANGE BACKGROUND UNLESS OTHERWISE SPECIFIED.
2. SEE TC-02 FOR SIGN AND DELINEATOR SPACING, TAPER AND BUFFER LENGTHS. SIGN SPACING MAY BE INCREASED AND DELINEATOR SPACING MAY DECREASE FROM THE DISTANCES SHOWN IN THE TABLE BASED ON SITE SPECIFIC CONDITIONS (DRIVEWAYS, SIDE STREETS, ETC.).
3. THIS PLAN DOES NOT APPLY TO SIGNALIZED OR MULTI-WAY STOP LOCATIONS.
4. "SHOULDER WORK" SIGN MAY BE OMITTED WHERE ONE OR MORE OF THE FOLLOWING IS APPLICABLE:
 - WORK AREA IS BEHIND A FIXED BARRIER
 - WORK AREA IS MORE THAN 24' BEHIND A CURB
 - WORK AREA IS 15' OR GREATER FROM THE EDGE OF ANY ROADWAY
5. "SHOULDER WORK" SIGN MAY BE SUBSTITUTED WITH A "ROAD WORK AHEAD" OR "UTILITY WORK AHEAD" SIGN AS CONDITIONS APPLY.

LEGEND

	DELINEATOR		ARROW BOARD
	SIGN		WORK AREA
	FLAGGER		TRAFFIC DIRECTION
	BARRICADE		
	VARIABLE MESSAGE SIGN		

POSTED SPEED LIMIT (MPH)	TAPER LENGTH (L)	DELINEATOR SPACING	SIGN SPACING	BUFFER LENGTH

REVISED BY: []

DATE: []

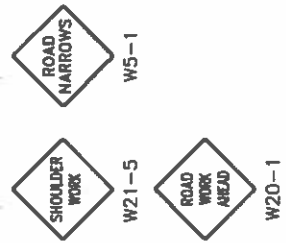
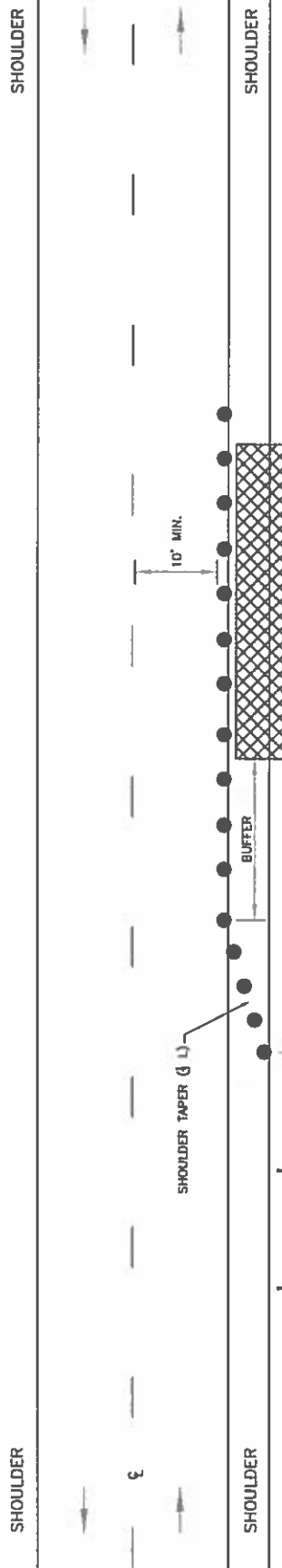
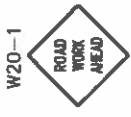
DESIGNED BY: []

CHECKED BY: []

APPROVED BY: []

ACHD
Traffic Engineering Division
3778 ADAMS STREET, CANTON, OH, 44704
www.achd.com

TYPICAL TRAFFIC CONTROL PLANS		STANDARD DRAWING NO.
Work Beyond the Shoulder		TC-10



LEGEND

	DELINEATOR		ARROW BOARD
	SIGN		WORK AREA
	FLAGGER		TRAFFIC DIRECTION
	BARRICADE		
	VARIABLE MESSAGE SIGN		

NOTES

- SEE TC-01 FOR SIGN DESCRIPTION. ALL WARNING SIGNS SHALL HAVE A BLACK LEGEND AND BORDER ON AN ORANGE BACKGROUND UNLESS OTHERWISE SPECIFIED.
- SEE TC-02 FOR SIGN AND DELINEATOR SPACING, TAPER AND BUFFER LENGTHS. SIGN SPACING MAY BE INCREASED AND DELINEATOR SPACING MAY DECREASE FROM THE DISTANCES SHOWN IN THE TABLE BASED ON SITE SPECIFIC CONDITIONS (DRIVEWAYS, SIDE STREETS, ETC.).
- THIS PLAN DOES NOT APPLY TO SIGNALIZED OR MULTI-WAY STOP LOCATIONS.
- "SHOULDER WORK" SIGN MAY BE SUBSTITUTED WITH A "ROAD WORK AHEAD" OR "UTILITY WORK AHEAD" SIGN AS CONDITIONS APPLY.

POSTED SPEED LIMIT (MPH)	SHOULDER TAPER LENGTH (L)	DELINEATOR SPACING (TAPER/75ft)	SIGN SPACING	BUFFER LENGTH
		/		

REVISIONS

NO.	DATE	BY	DESCRIPTION

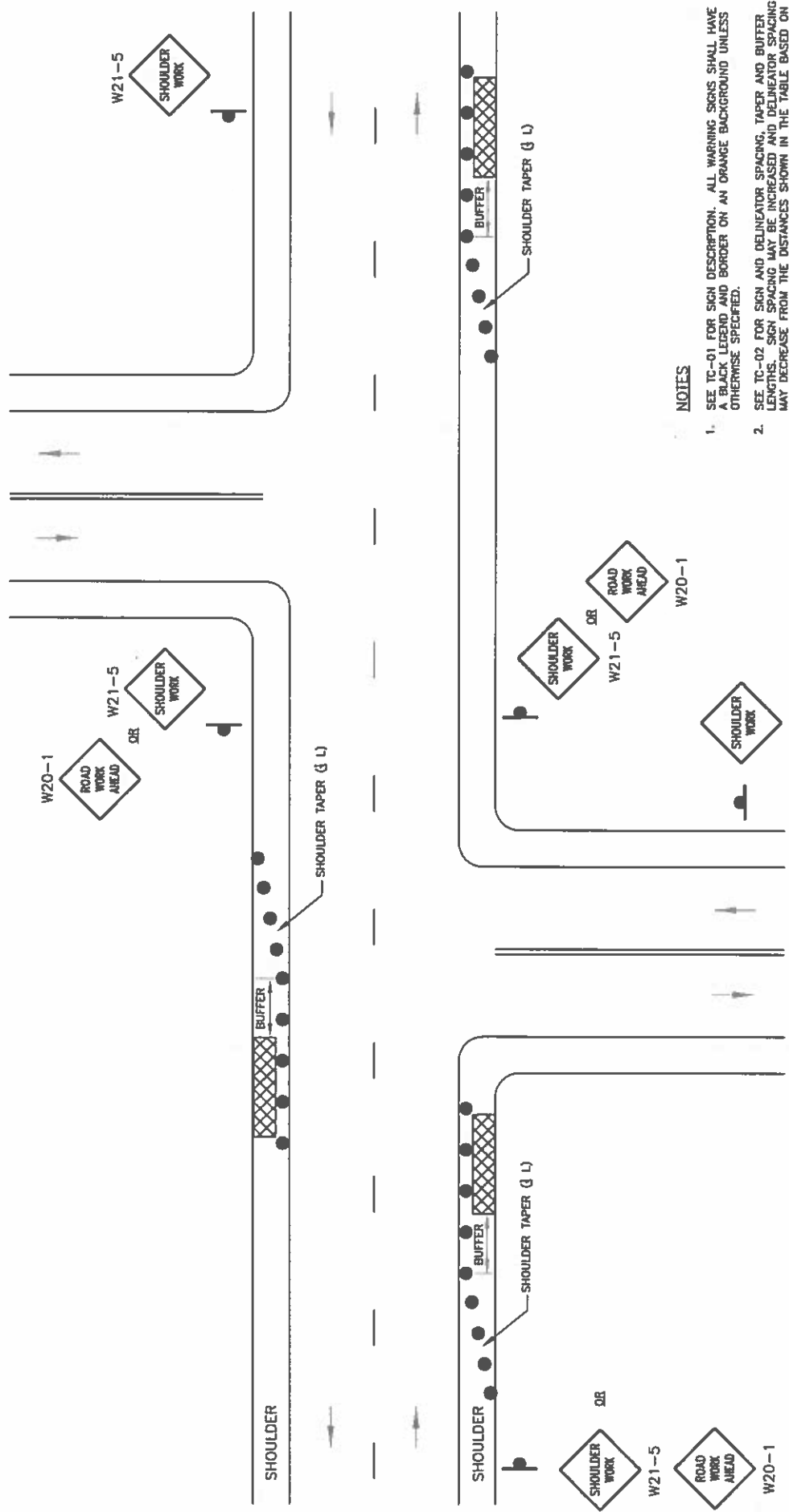
ACHD
Traffic Engineering Division
375 ADAMS STREET, SANDOZ CRT, D 83714
www.achd.org

TYPICAL TRAFFIC CONTROL PLANS

Shoulder Work with Minor Encroachment

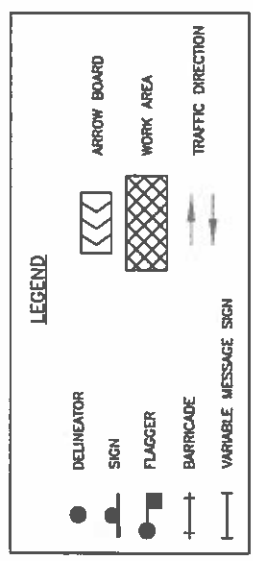
STANDARD DETAIL NO. **TC-11**

DATE: 3/1/2013
 DRAWN BY: Andrew Smith
 CHECKED BY: Andrew Smith
 APPROVED BY: Robert Dyer



NOTES

1. SEE TC-01 FOR SIGN DESCRIPTION. ALL WARNING SIGNS SHALL HAVE A BLACK LEGEND AND BORDER ON AN ORANGE BACKGROUND UNLESS OTHERWISE SPECIFIED.
2. SEE TC-02 FOR SIGN AND DELINEATOR SPACING, TAPER AND BUFFER LENGTHS. SIGN SPACING MAY BE INCREASED AND BUFFER SPACING MAY DECREASE FROM THE DISTANCES SHOWN IN THE TABLE BASED ON SITE SPECIFIC CONDITIONS (ORNSWAYS, SIDE STREETS, ETC.).
3. WHEN PAVED SHOULDERS OR ON STREET PARKING AREAS HAVING A WIDTH OF 8' OR GREATER ARE CLOSED, CHANNELIZING DEVICES SHALL BE USED TO DELINEATE THE BEGINNING OF THE WORK SPACE.



POSTED SPEED LIMIT (MPH)	SHOULDER TAPER LENGTH (L)	DELINEATOR SPACING (TAPER/TAH)	SIGN SPACING	BUFFER LENGTH
		/		

REVISIONS

NO.	DATE	BY	DESCRIPTION

ACHD
 Traffic Engineering Division
 3775 ADAMS STREET, CANTON CITY, IN 46714
 www.achd.in.gov

TYPICAL TRAFFIC CONTROL PLANS

Shoulder Work - Near Intersections

TC-12

STANDARD DETAIL NO.

DATE: 3/22/2013
 DRAWN BY: Andrew Smith
 CHECKED BY: Andrew Smith
 APPROVED BY: Ross Dym