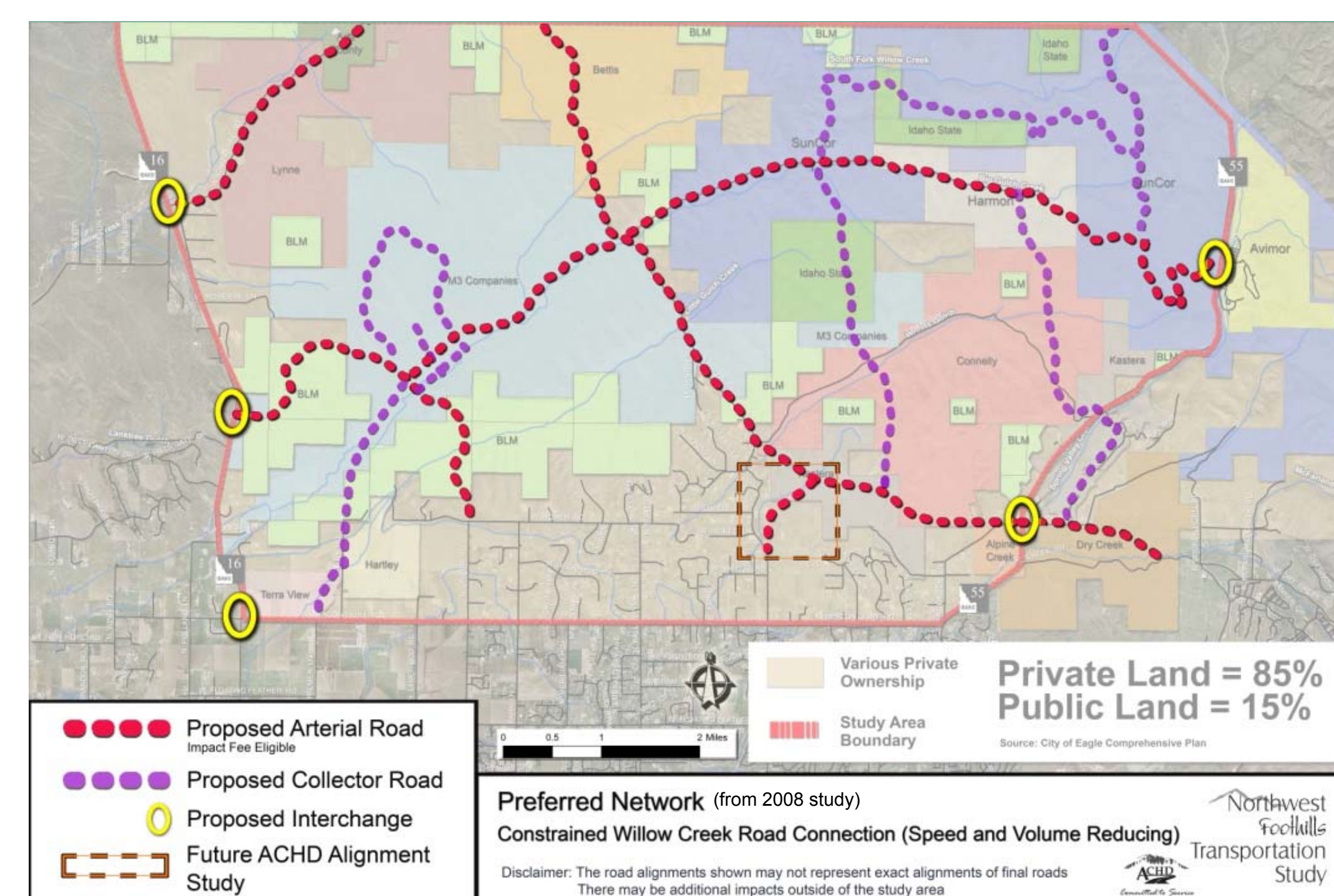


Study background

In 2008, in response to the influx of proposals for planned communities and future development in the Northwest Foothills, ACHD and the City of Eagle initiated a study to analyze future impacts to the regional transportation system. The study:

- Analyzed potential impacts of development on the existing and future transportation system.
- Identified future transportation needs & a future road network.
- Established policies for improving the transportation system when development occurs.



The intent of the study was **not** to endorse development, but to provide mechanisms for infrastructure should development occur.

The 2008 study was a year-long process.

