

Why Medians?

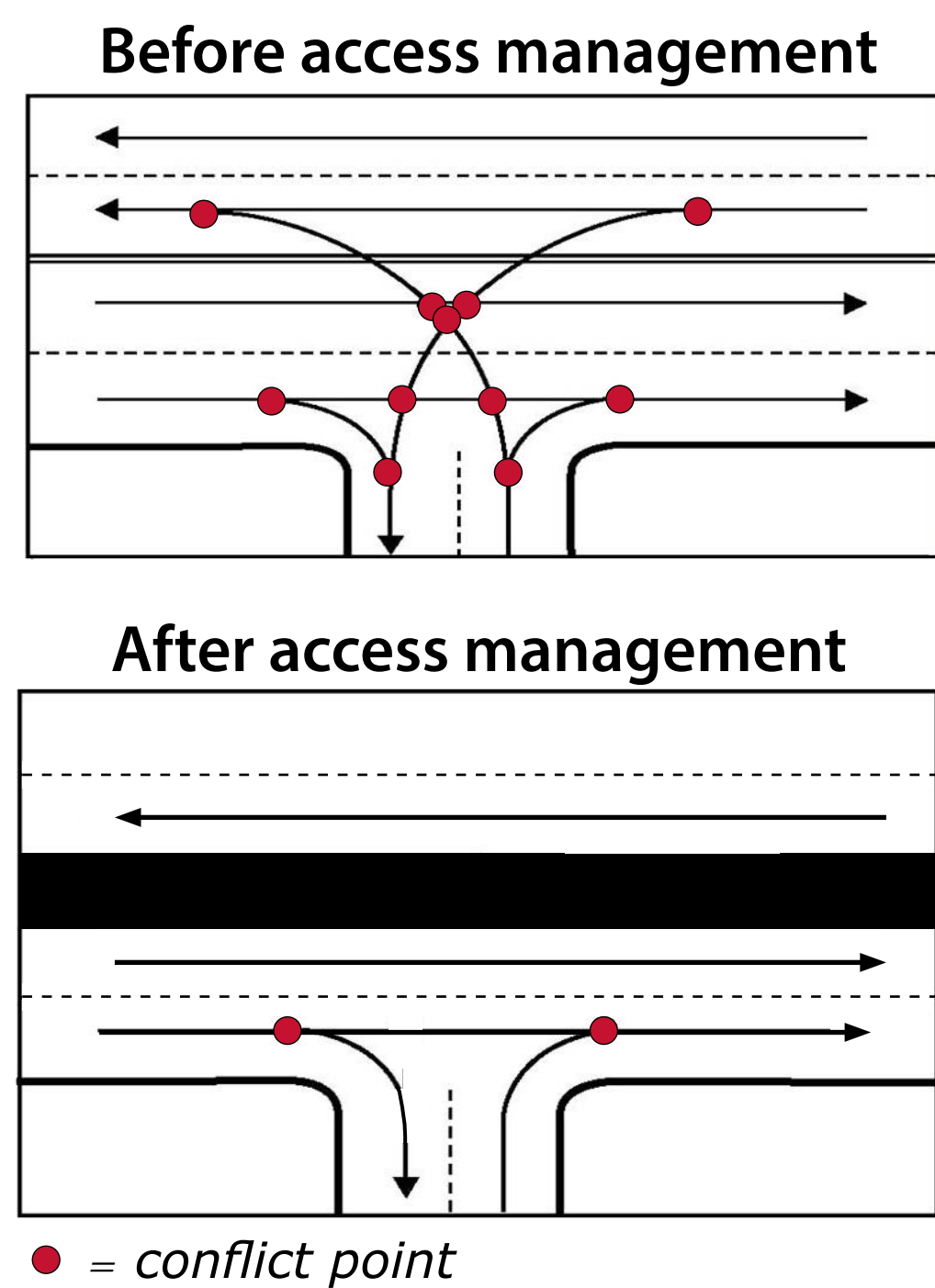
SAFETY



Medians and other access management tools decrease the potential number of accidents for motorists, pedestrians and cyclists.

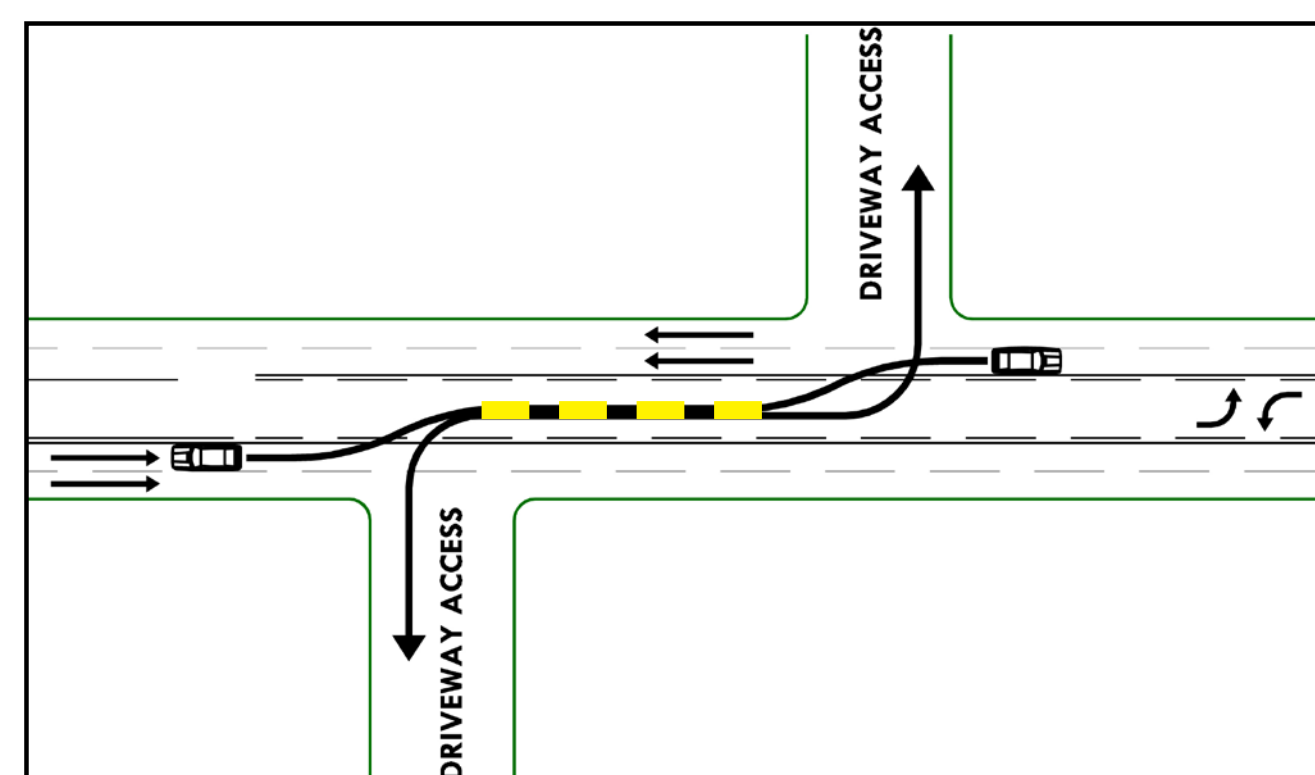
Vehicle conflicts decrease

By adding a median, conflicts decrease from **11 conflict points** to **2 points**.



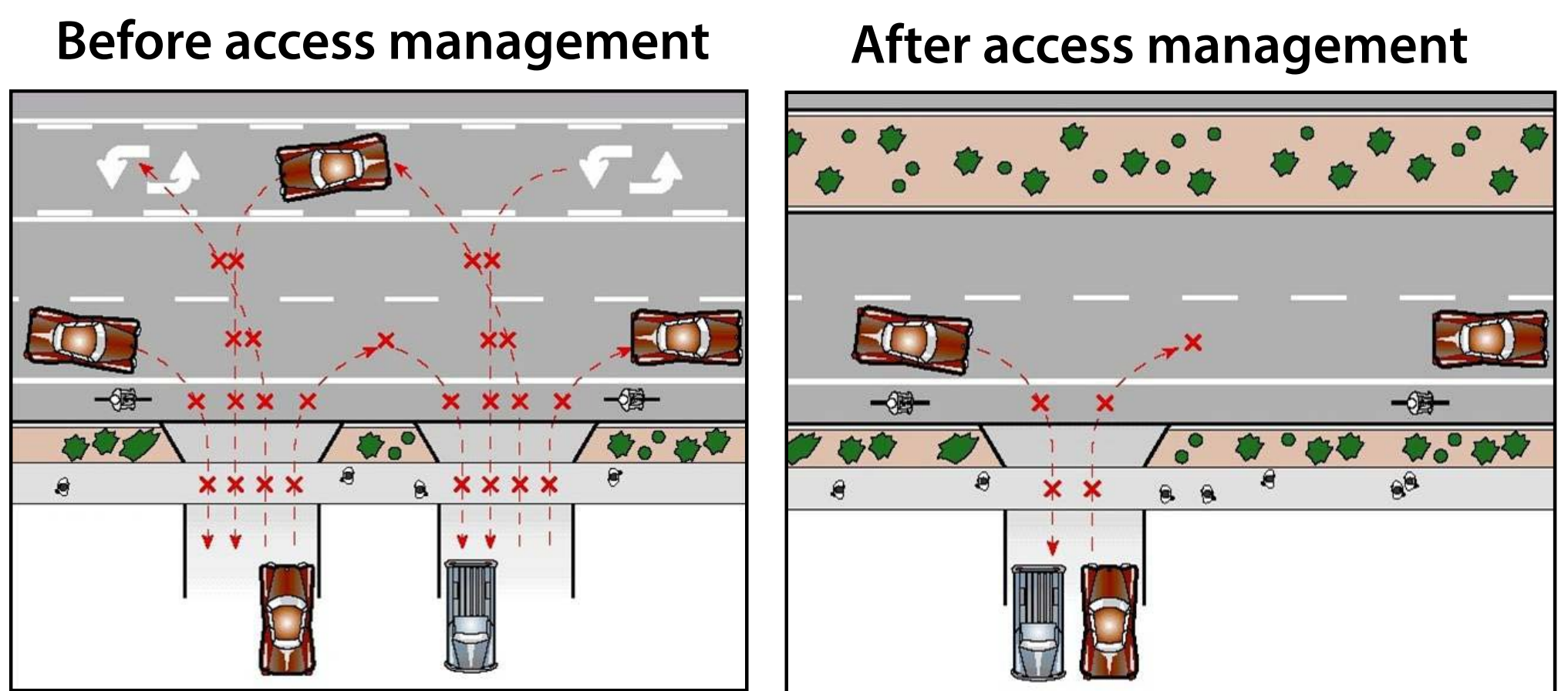
Painted left turn lanes make everyone vulnerable

Painted two-way left turn lanes leave motorists open to conflicting left-turns, where two motorists traveling in opposite directions try to use the same space to make left turns.



As traffic volumes increase, painted two-way turn lane safety decreases and delay increases.

Pedestrian conflicts decrease



x = conflict point

Illustration source: FDOT

Studies have shown that raised medians reduced pedestrian involved crashes by **45 percent** and fatalities by **78 percent** compared to two-way left turn lanes.*

National studies have shown a **25% decrease in accidents** when medians were used instead of painted left turn lanes.

*Federal Highway Administration's (FHWA) "Benefits of Access Management" Brochure (www.accessmanagement.info)