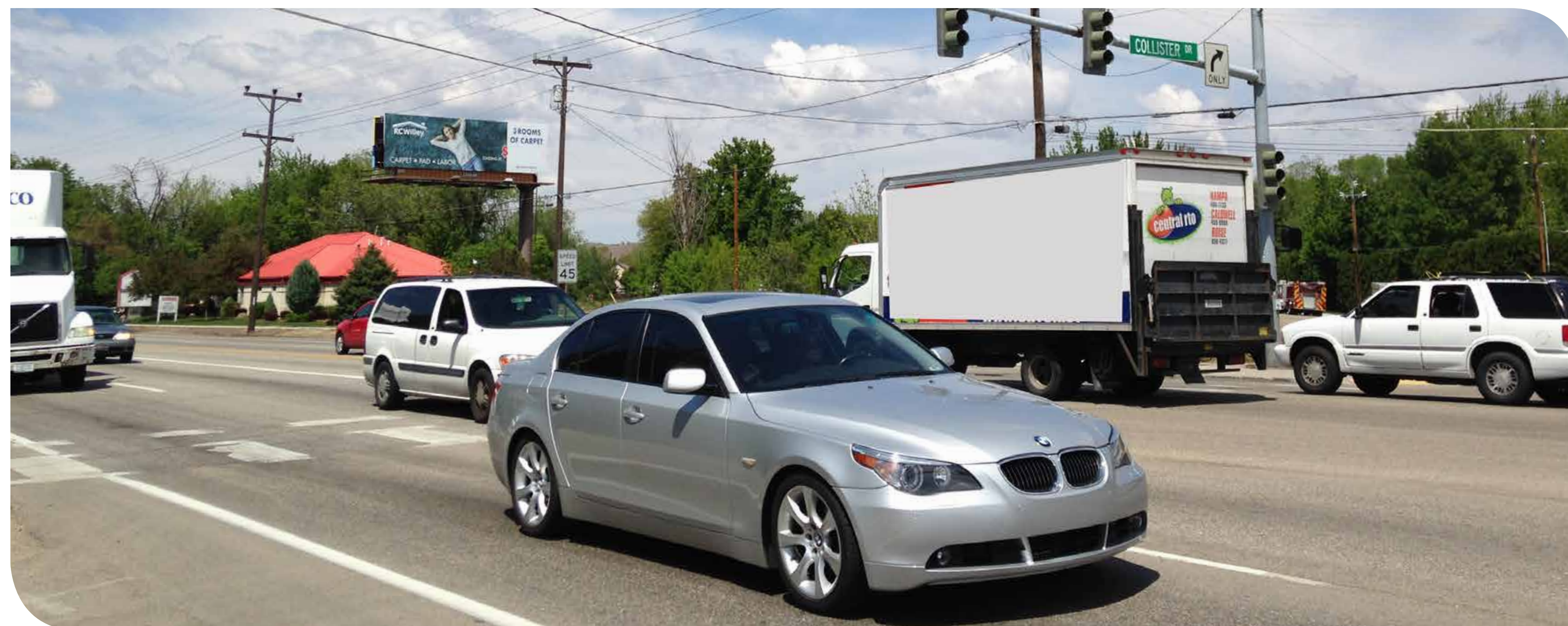


# Traffic

## Intersection

- Projected to reach capacity for five lanes in 2022
- Eliminates conflicts at driveways and streets
- Prepares intersection for future transit corridor



## State Street

**Current:** 32,000 vehicles/day  
**Future:** 51,000 vehicles/day

## Collister Drive

**Current:** 6,000 vehicles/day  
**Future:** 7,000 vehicles/day

## Number of Lanes vs. Daily Traffic Volume

Number of Lanes	Average Daily Traffic Volume
2	up to 15,500
3	15,000 - 20,000
4/5	20,000 - 40,000
6/7	40,000 - 55,000

Average daily traffic thresholds are for long-term planning purposes only and are one of several factors evaluated in determining roadway improvements.