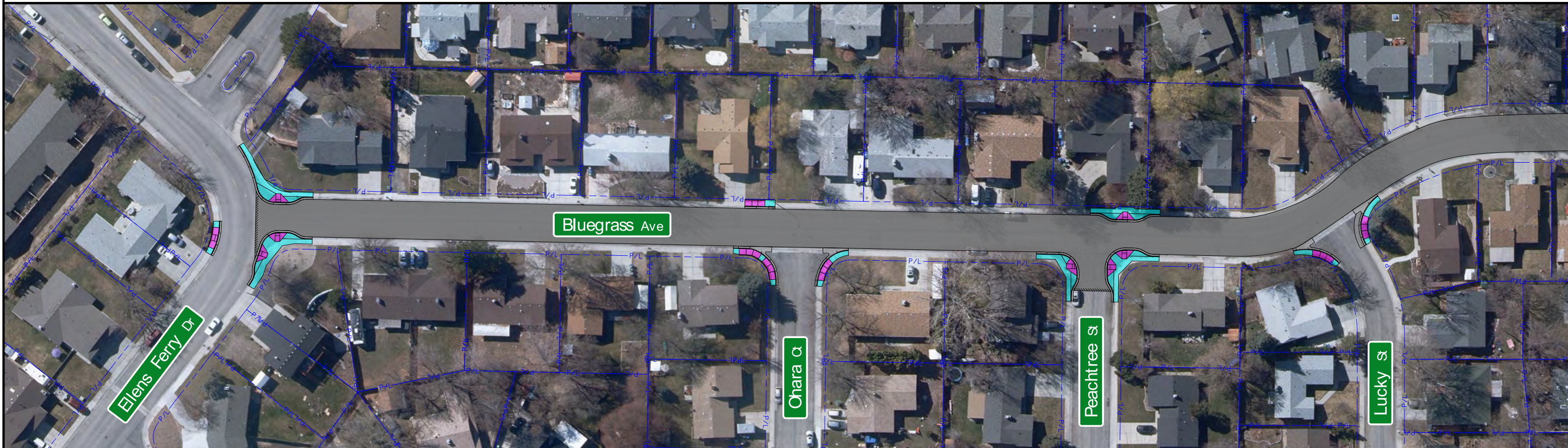


0 20' 40' 80'

October 14, 2021

Bluegrass Avenue, Ellens Ferry Drive to Castle Hill Drive

FY 2022 Pavement and Pedestrian Improvements



- Improvements Include:**
- Removing and Replacing Pavement
 - Installing Pedestrian Bulb-outs
 - Replacing Existing Pedestrian Ramps to Meet Modern Standards

	New Asphalt Pavement
	New Pedestrian Ramp
	New Concrete Sidewalk