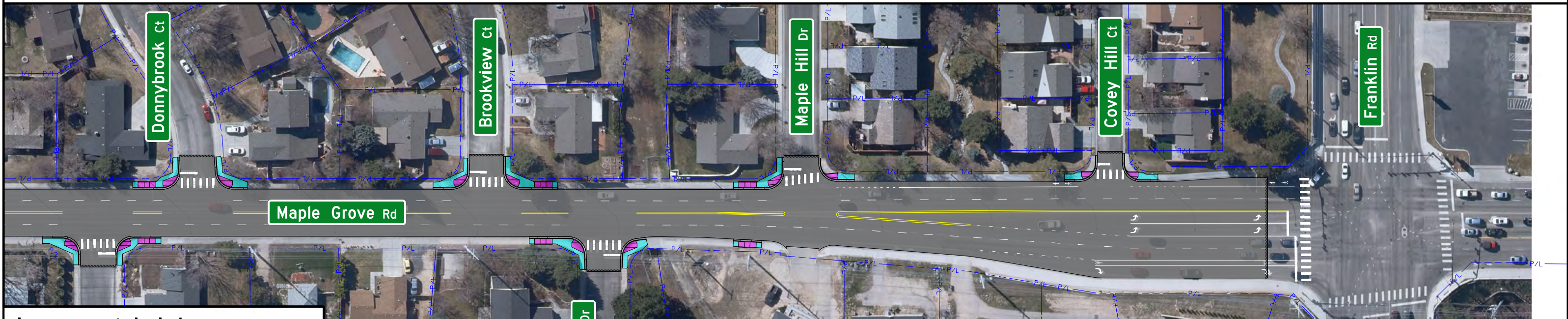


0 30' 60' 90'

October 14, 2021

Maple Grove Road, I-84 Overpass Bridge to Franklin Road

FY 2022 Pavement and Pedestrian Improvements



Improvements Include:

- Removing and Replacing Pavement
- Installing Pedestrian Hybrid Beacon to Cross Maple Grove Road at the Shoup Avenue Intersection
- Replacing Existing Pedestrian Ramps to Meet Modern Standards

	New Asphalt Pavement
	New Pedestrian Ramp
	New Pedestrian Hybrid Beacon
	New Concrete Sidewalk