



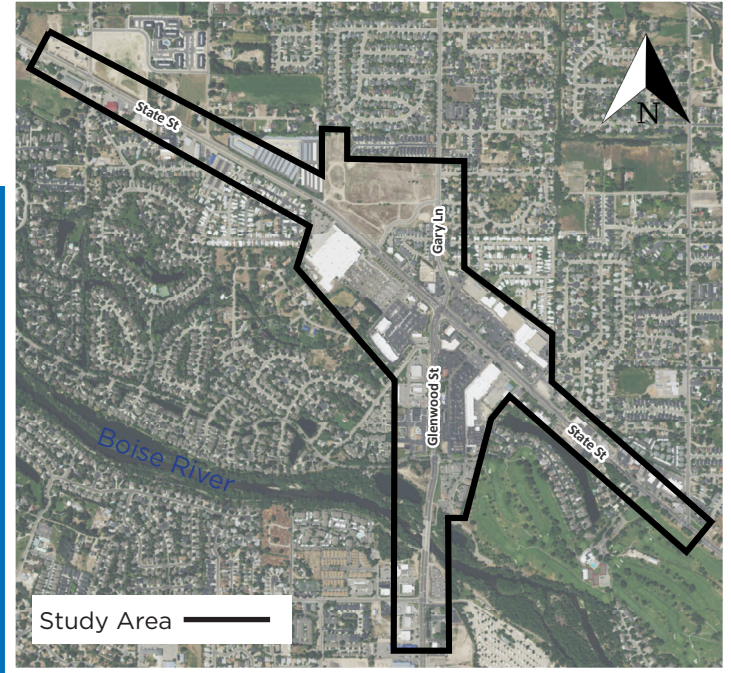
GLENWOOD & STATE INTERSECTION STUDY



The Glenwood Street and State Street intersection is a critical junction for moving people and goods through the State Street corridor and connecting the cities of Boise and Garden City. The intersection's diverse set of challenges have led the Idaho Transportation Department (ITD) and Ada County Highway District (ACHD) to initiate the **Glenwood Street and State Street Intersection Study**.

This Study will engage local agencies, property owners, businesses, and the community to identify a preferred solution that:

- Improves intersection functionality for all users, including those with disabilities,
- Provides enhanced pedestrian and bicycle connectivity,
- Accommodates the surrounding current and planned land uses, including the proposed redevelopment of State Street as a transit-oriented corridor, and
- Complies with ACHD and ITD standards and supports the transportation vision for State Street



CONTACT

Robyn Austin, Public Involvement Specialist
208-338-2683 | raustin@kittelson.com

David Corcoran, ACHD Planning & Programming
208-387-6252 | projects@achdidaho.org

Mark Wasdahl, ITD Senior Planner
208-334-8344 | mark.wasdahl@itd.idaho.gov

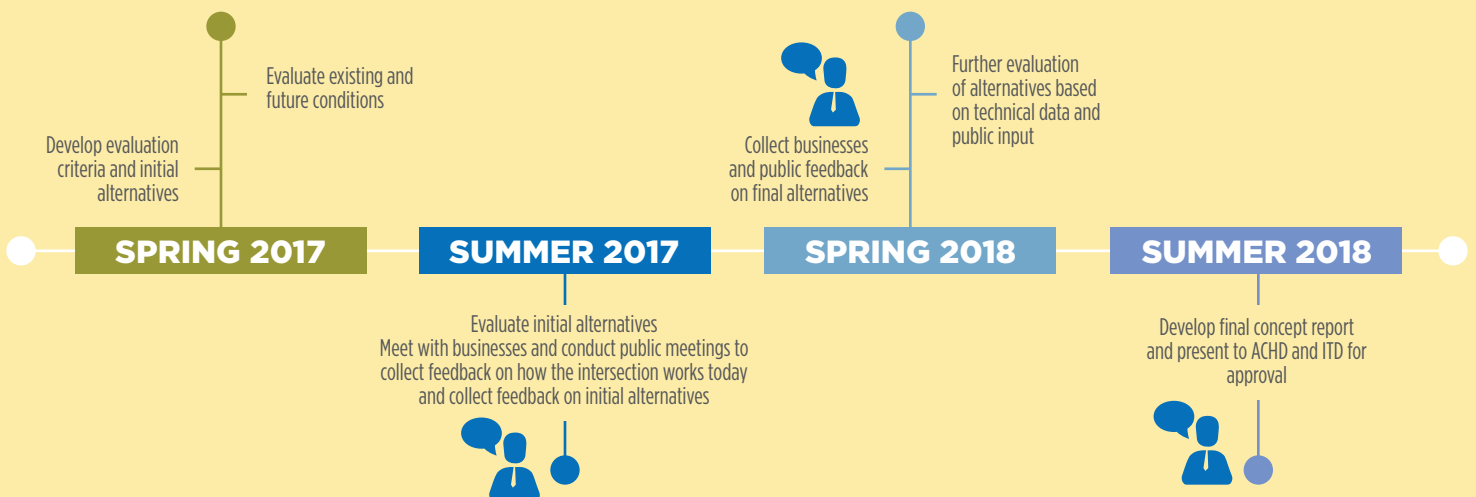
PROJECT WEBSITE

bit.ly/glenwoodstate2

Did you know?

60,000 cars travel through the intersection everyday. If lined up the cars would stretch from Boise to Idaho Falls.

PROJECT TIMELINE





101 S Capitol Blvd, Suite 301
Boise, Idaho 83702