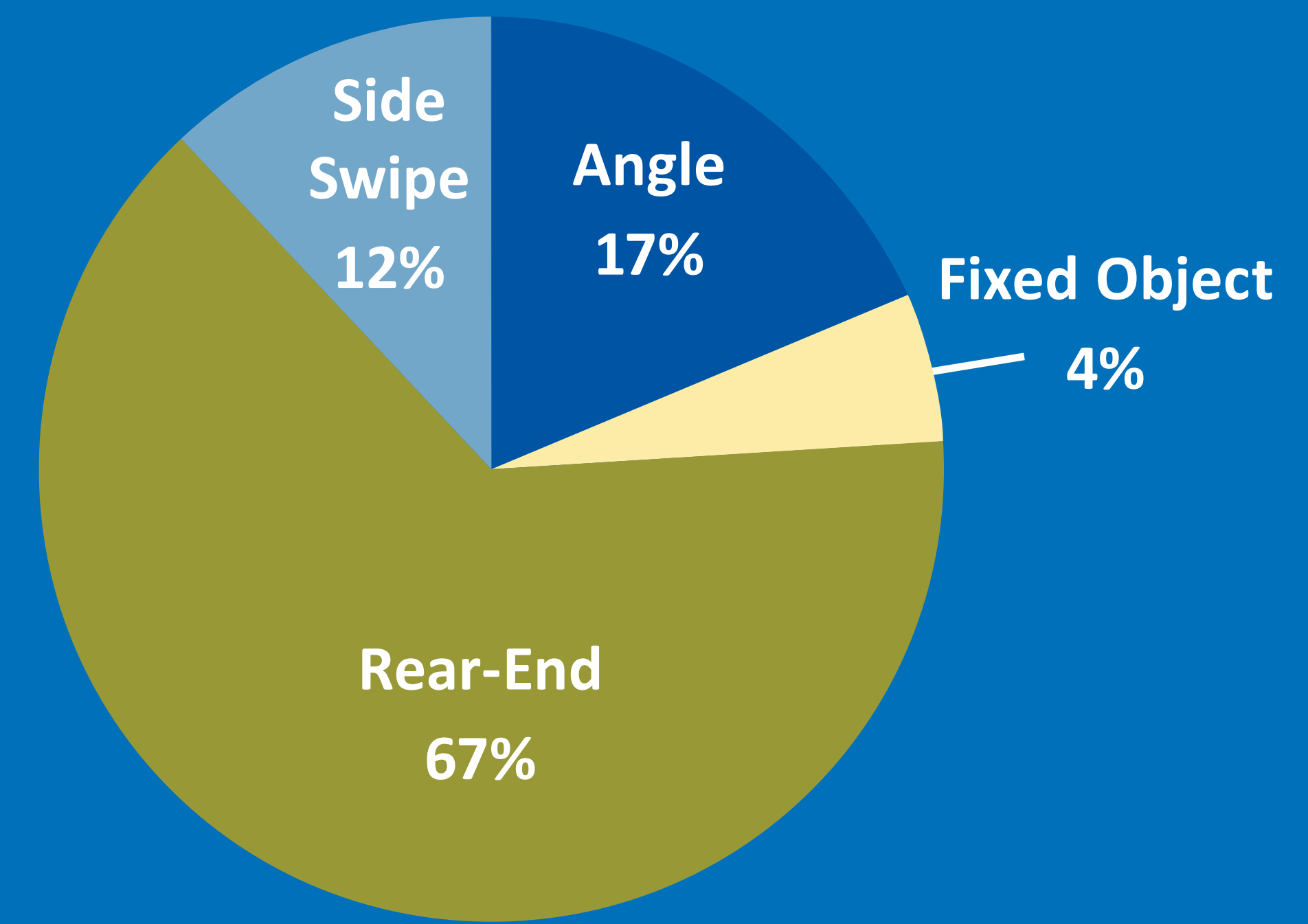


# SAFETY

## 2011-2015 Crashes Reported at the State St/Glenwood St Intersection



**112** reported crashes between 2011-2015

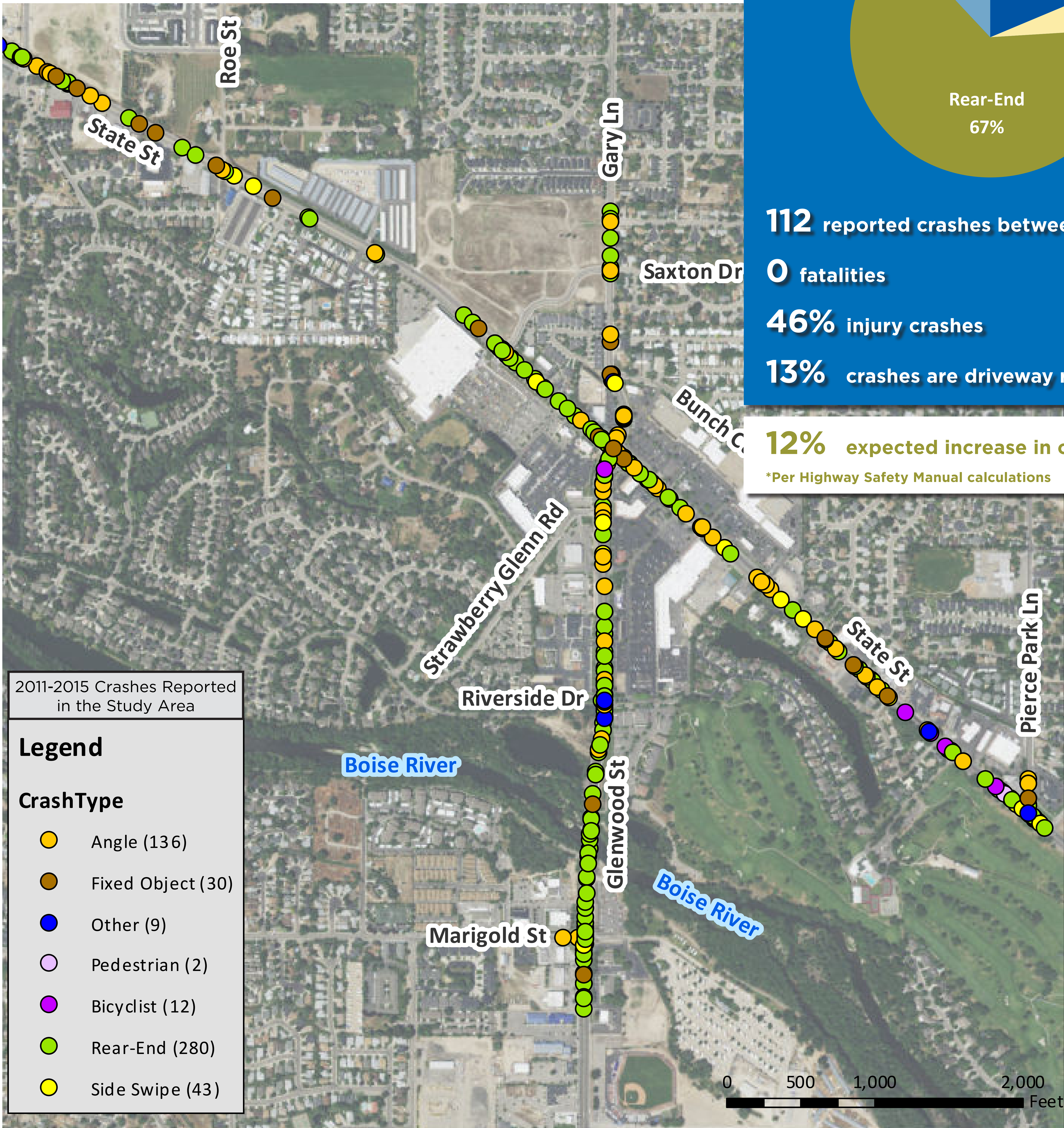
**0** fatalities

**46%** injury crashes

**13%** crashes are driveway related

**12%** expected increase in crashes by 2040\*

\*Per Highway Safety Manual calculations



2011-2015 Crashes Reported in the Study Area

### Legend

#### CrashType

- Angle (136)
- Fixed Object (30)
- Other (9)
- Pedestrian (2)
- Bicyclist (12)
- Rear-End (280)
- Side Swipe (43)