

NOTES

- SEE TC-01 FOR SIGN DESCRIPTION. ALL WARNING SIGNS SHALL HAVE A BLACK LEGEND AND BORDER ON AN ORANGE BACKGROUND UNLESS OTHERWISE SPECIFIED.
- SEE TC-02 FOR SIGN AND DELINEATOR SPACING, TAPER AND BUFFER LENGTHS. SIGN SPACING MAY BE INCREASED AND DELINEATOR SPACING MAY DECREASE.
- THIS PLAN DOES NOT APPLY TO SIGNALIZED OR MULTI-WAY STOP LOCATIONS.
- THIS PLAN CAN APPLY TO ROADWAYS WITH OR WITHOUT A CENTERLINE MARKING.
- THE W1-3L SIGN SHALL BE USED WHEN THE POSTED SPEED LIMIT IS 30 MPH OR LESS. THE W1-4L SIGN SHALL BE USED WHEN THE POSTED SPEED LIMIT IS 35 MPH OR ABOVE. WORK ZONE SPEED LIMIT REDUCTIONS SHALL BE IMPLEMENTED ONLY WITH APPROVAL OF THE ACHD TRAFFIC ENGINEER.

LEGEND

●	DELINEATOR	◀◀◀	ARROW BOARD
⊣	SIGN	▨	WORK AREA
⊣	FLAGGER	→	TRAFFIC DIRECTION
⊣	BARRICADE	— —	VARIABLE MESSAGE SIGN

POSTED SPEED LIMIT (MPH)	SHIFT TAPER LENGTH (L)	DELINEATOR SPACING (TAPER/TAN.)	SIGN SPACING	BUFFER LENGTH
		/		

REVISIONS

NO.	DATE	BY	DESCRIPTION
1			
2			
3			
4			

SIGNATURES

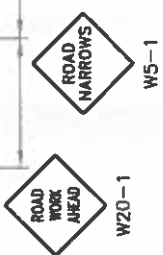
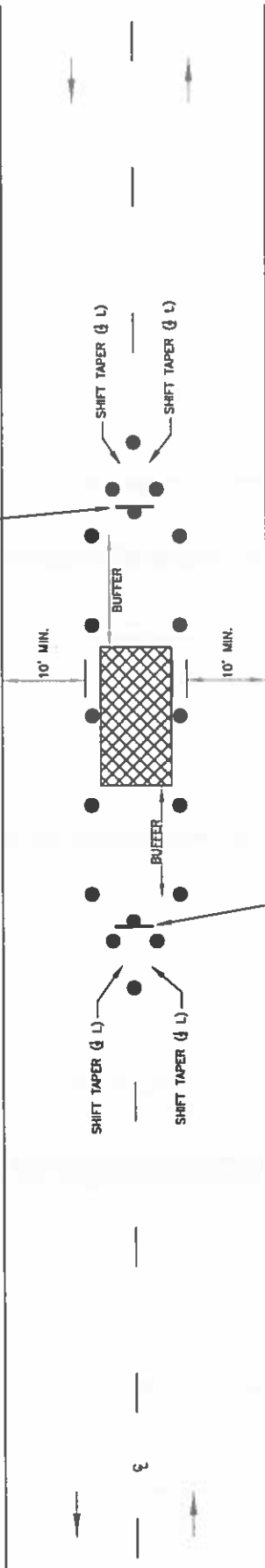
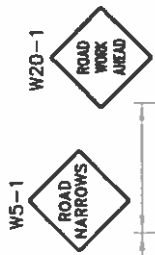
Drawn By:	Andrew Bink
Design By:	Andrew Bink
Approved By:	Mark Oyam

TYPICAL TRAFFIC CONTROL PLANS

Side of Road - Work Area

Two Lane Traffic Control

STANDARD DETAIL NO. **TC-20**



NOTES

1. SEE TC-01 FOR SIGN DESCRIPTION. ALL WARNING SIGNS SHALL HAVE A BLACK LEGEND AND BORDER ON AN ORANGE BACKGROUND UNLESS OTHERWISE SPECIFIED.
2. SEE TC-02 FOR SIGN AND DELINEATOR SPACING, TAPER AND BUFFER LENGTHS. SIGN SPACING MAY BE INCREASED AND DELINEATOR SPACING MAY DECREASE FROM THE DISTANCES SHOWN IN THE TABLE BASED ON SITE SPECIFIC CONDITIONS (DRIVEWAYS, SIDE STREETS, ETC.).
3. THIS PLAN DOES NOT APPLY TO SIGNALIZED OR MULTI-WAY STOP LOCATIONS.
4. THIS PLAN CAN APPLY TO ROADWAYS WITH OR WITHOUT A CENTERLINE MARKING.

LEGEND

●	DELINEATOR	◀◀◀	ARROW BOARD
— —	SIGN	▨	WORK AREA
●	FLAGGER	→	TRAFFIC DIRECTION
—+—	BARRICADE	— —	VARIABLE MESSAGE SIGN

POSTED SPEED LIMIT (MPH)	SHIFT TAPER LENGTH (ft)	DELINEATOR SPACING (TAPER/TAN)	SIGN SPACING	BUFFER LENGTH
		/		

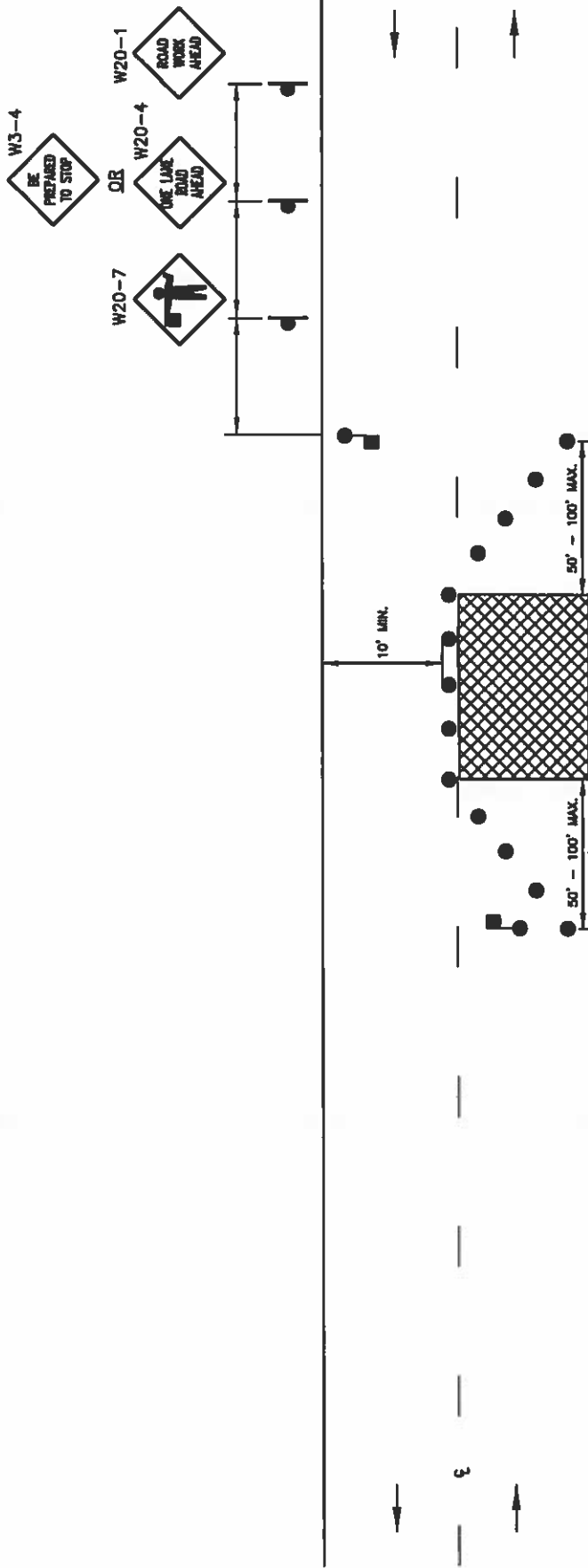


REVISIONS

NO.	DATE	BY	DESCRIPTION

SIGNATURES

Drawn By: Jonathan Bush	Checked By: Jonathan Bush
Date: 3/23/2013	Approval By: Russ Olyn
Plan: TC-21.DWG	



NOTES

1. SEE TC-01 FOR SIGN DESCRIPTION. ALL WARNING SIGNS SHALL HAVE A BLACK LEGEND AND BORDER ON AN ORANGE BACKGROUND UNLESS OTHERWISE SPECIFIED.
2. SEE TC-02 FOR SIGN AND DELINEATOR SPACING, TAPER AND BUFFER LOCATIONS. SIGN SPACING MAY BE INCREASED AND DELINEATOR SPACING MAY DECREASE FROM THE DISTANCES SHOWN IN THE TABLE BASED ON SITE SPECIFIC CONDITIONS (DRIVEWAYS, SIDE STREETS, ETC.).
3. THIS PLAN DOES NOT APPLY TO SIGNALIZED OR MULTI-WAY STOP LOCATIONS.
4. THIS PLAN CAN APPLY TO ROADWAYS WITH OR WITHOUT CENTERLINE MARKINGS.
5. A BUFFER SPACE MAY BE INCLUDED AS PART OF THE WORK ZONE BASED ON SITE SPECIFIC CONDITIONS (HORIZONTAL AND VERTICAL ALIGNMENT OF ROADWAY, DRIVEWAYS, ETC.).
6. FLAGGING TAPER SHALL BE A MINIMUM OF 50' IN LENGTH (100' MAX.) AND CONSIST OF AT LEAST FIVE (5) EVENLY SPACED CHANNELIZING DEVICES.
7. EYE CONTACT SHALL BE MAINTAINED BETWEEN FLAGGERS. IF THIS IS NOT FEASIBLE, TWO-WAY COMMUNICATION SHALL BE EMPLOYED.

LEGEND

	DELINEATOR		ARROW BOARD
	SIGN		WORK AREA
	FLAGGER		TRAFFIC DIRECTION
	BARRICADE		VARIABLE MESSAGE SIGN

POSTED SPEED LIMIT (MPH)	TAPER LENGTH (L)	DELINEATOR SPACING (TAPER/TAIL)	SIGN SPACING	BUFFER LENGTH
	50-100' (MAX.) (FOR FLAGGING)	/		

REVISIONS

NO.	DATE	BY	DESCRIPTION
1	1/15/14	JES	Issue revision
2	1/15/14	JES	Revised taper length

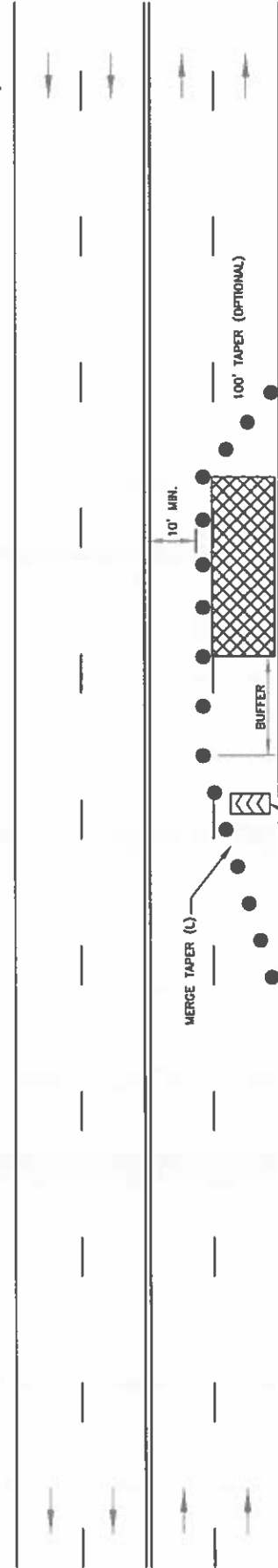
SIGNATURES

Drawn By: JES	Checked By: JES
Date: 1/15/14	Approved By: JES

PROJECT INFORMATION

PROJECT: Side of Road - Work Area
 TITLE: Two Lane Traffic Control With Flaggers
 SHEET NO.: TC-22
 STANDARD DETAIL NO.: TC-22

W20-1



NOTES

1. SEE TC-01 FOR SIGN DESCRIPTION. ALL WARNING SIGNS SHALL HAVE A BLACK LEGEND AND BORDER ON AN ORANGE BACKGROUND UNLESS OTHERWISE SPECIFIED.
2. SEE TC-02 FOR SIGN AND DELINEATOR SPACING, TAPER AND BUFFER LENGTHS. SIGN SPACING MAY BE INCREASED AND DELINEATOR SPACING MAY DECREASE FROM THE DISTANCES SHOWN IN THE TABLE BASED ON SITE SPECIFIC CONDITIONS (DRIVEWAYS, SIDE STREETS, ETC.).
3. THIS PLAN DOES NOT APPLY TO SIGNALIZED OR MULTI-WAY STOP LOCATIONS.
4. THE ARROW BOARD SHOULD BE LOCATED INSIDE THE TAPER BEHIND THE CHANNELIZING DEVICES AS CLOSE TO THE BEGINNING OF THE TAPER AS FEASIBLE.

LEGEND

	DELINEATOR		ARROW BOARD
	SIGN		WORK AREA
	FLAG		TRAFFIC DIRECTION
	BARRICADE		
	VARIABLE MESSAGE SIGN		

POSTED SPEED LIMIT (MPH)	MERGE TAPER LENGTH (L)	DELINEATOR SPACING (TAPER/TAN.)	SIGN SPACING	BUFFER LENGTH
		/		

REVISIONS

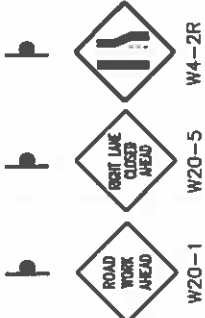
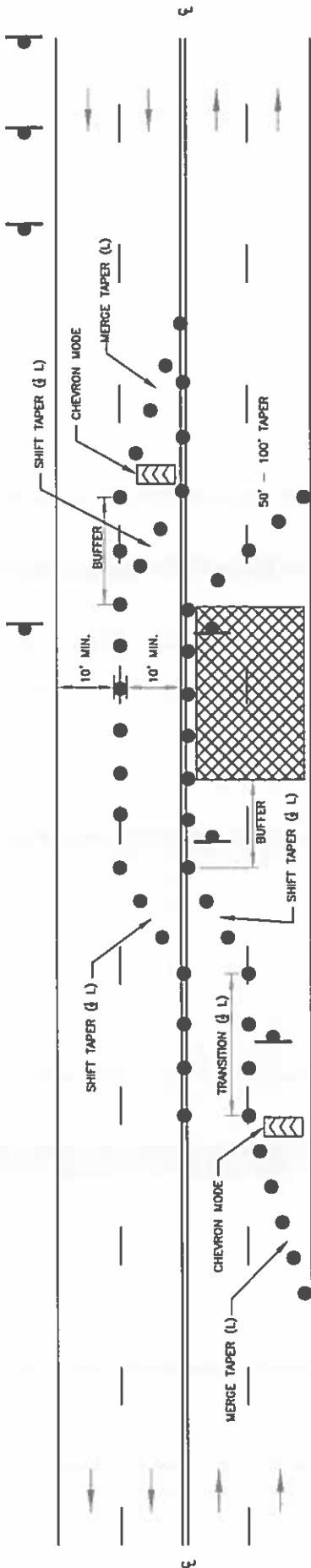
NO.	DATE	BY	DESCRIPTION
1			
2			
3			
4			

SIGNATURES

Drawn By: Joshua Smith
 Design By: Joshua Smith
 Date: 3/3/2012
 File: TC-23.DWG
 Approval By: Russ Oyer

TYPICAL TRAFFIC CONTROL PLANS
 Side of Road - Work Area
 Right Lane Traffic Control - Four Lanes

STANDARD DETAIL NO.
TC-23



NOTES

- SEE TC-01 FOR SIGN DESCRIPTION. ALL WARNING SIGNS SHALL HAVE A BLACK LEGEND AND BORDER ON AN ORANGE BACKGROUND UNLESS OTHERWISE SPECIFIED.
- SEE TC-02 FOR SIGN AND DELINEATOR SPACING, TAPER AND BUFFER LENGTHS. SIGN SPACING MAY BE INCREASED AND DELINEATOR SPACING MAY DECREASE FROM THE DISTANCES SHOWN IN THE TABLE BASED ON SITE SPECIFIC CONDITIONS (DRIVEWAYS, SIDE STREETS, ETC.).
- THIS PLAN DOES NOT APPLY TO SIGNALIZED OR MULTI-WAY STOP LOCATIONS.
- THE ARROW BOARD SHOULD BE LOCATED INSIDE THE TAPER BEHIND THE CHANNELIZING DEVICES AS CLOSE TO THE BEGINNING OF THE TAPER AS FEASIBLE.
- THE W1-3L SIGN SHALL BE USED WHEN THE POSTED SPEED LIMIT IS 30 MPH OR LESS. THE W1-4L SIGN SHALL BE USED WHEN THE POSTED SPEED LIMIT IS 35 MPH OR ABOVE. WORK ZONE SPEED LIMIT REDUCTIONS SHALL BE IMPLEMENTED ONLY WITH APPROVAL OF THE ACHD TRAFFIC ENGINEER PRIOR TO THE START OF WORK.
- ADDITIONAL W6-3 SIGNS MAY BE REQUIRED BASED ON THE LENGTH OF THE WORK ZONE AT THE DISCRETION OF THE ACHD TRAFFIC ENGINEER.

LEGEND

	DELINEATOR		ARROW BOARD
	SIGN		WORK AREA
	FLAGGER		TRAFFIC DIRECTION
	BARRICADE		
	VARIABLE MESSAGE SIGN		

POSTED SPEED LIMIT	MERGE TAPER LENGTH (L)	TRANSITION LENGTH (L)	SHIFT TAPER LENGTH (L)	DELINEATOR SPACING (TAPER/TAN.)	SIGN SPACING	BUFFER LENGTH
				/		

REVISIONS

NO.	DATE	BY	DESCRIPTION

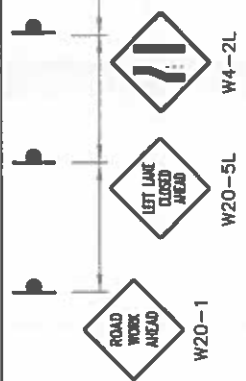
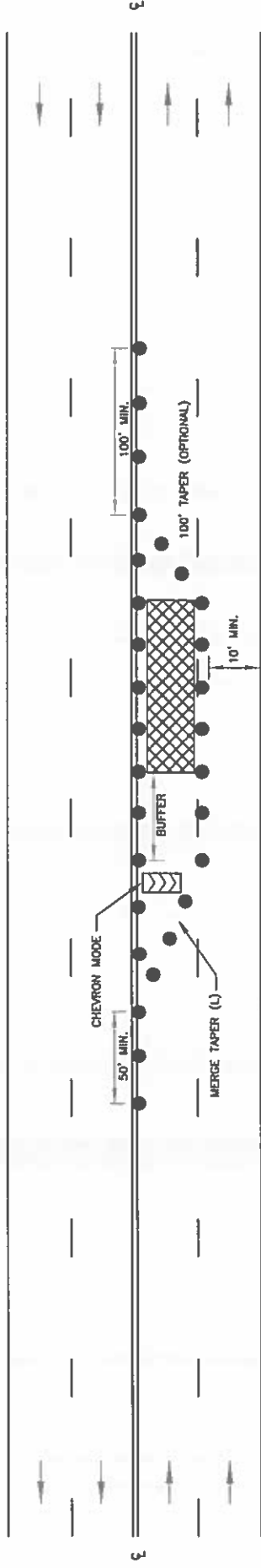
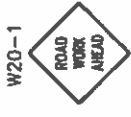
ACHD
Traffic Engineering Division
3775 ADAMS STREET, GAZON CITY, UT 82414
www.achd.utah.gov

SIGNATURES

Drawn By: Andrew Shook
Design By: Andrew Shook
Date: 3/7/2012
File: TC-24.DWG
Approved By: Russ Dym

TYPICAL TRAFFIC CONTROL PLANS
Interior of Road - Work Area
Multilane Traffic Control - Half Road Closure - Four Lanes

STANDARD DETAIL NO.: **TC-24**



NOTES

1. SEE TC-01 FOR SIGN DESCRIPTION. ALL WARNING SIGNS SHALL HAVE A BLACK LEGEND AND BORDER ON AN ORANGE BACKGROUND UNLESS OTHERWISE SPECIFIED.
2. SEE TC-02 FOR SIGN AND DELINEATOR SPACING, TAPER AND BUFFER LENGTHS. SIGN SPACING MAY BE INCREASED AND DELINEATOR SPACING MAY DECREASE FROM THE DISTANCES SHOWN IN THE TABLE BASED ON SITE SPECIFIC CONDITIONS (DRIVEWAYS, SIDE STREETS, ETC.).
3. THE ARROW BOARD SHOULD BE LOCATED INSIDE THE TAPER BEHIND THE CHANNELIZING DEVICES AS CLOSE TO THE BEGINNING OF THE TAPER AS FEASIBLE.
4. THIS PLAN DOES NOT APPLY TO SIGNALIZED OR MULTI-WAY STOP LOCATIONS.

LEGEND

●	DELINEATOR	◀◀◀	ARROW BOARD
⏏	SIGN	▨	WORK AREA
⏏	FLAGGER	→	TRAFFIC DIRECTION
+	BARRICADE	—	VARIABLE MESSAGE SIGN

POSTED SPEED LIMIT (MPH)	MERGE TAPER LENGTH (L)	DELINEATOR SPACING (TAPER/TAN.)	SIGN SPACING	BUFFER LENGTH
		/		



REVISIONS

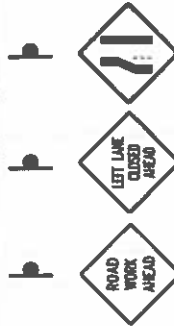
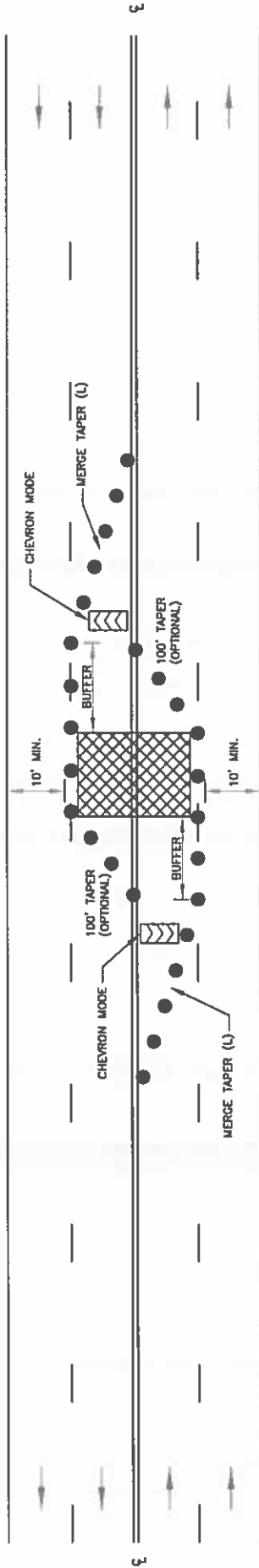
NO.	DATE	BY	DESCRIPTION

SIGNATURES

Drawn By: Joshua Blank	Checked By: Joshua Blank	Approved By: Russ Oyam
Date: 3/4/2013	File: TC-25.DWG	

TYPICAL TRAFFIC CONTROL PLANS
 Interior of Road - Work Area
 Left Lane Traffic Control - Four Lanes

STANDARD DETAIL NO. **TC-25**



- NOTES**
- SEE TC-01 FOR SIGN DESCRIPTION. ALL WARNING SIGNS SHALL HAVE A BLACK LEGEND BORDER ON AN ORANGE BACKGROUND UNLESS OTHERWISE SPECIFIED.
 - SEE TC-02 FOR SIGN AND DELINEATOR SPACING, TAPER AND BUFFER LENGTHS. SIGN SPACING MAY BE INCREASED AND DELINEATOR SPACING MAY DECREASE FROM THE DISTANCES SHOWN IN THE TABLE BASED ON SITE SPECIFIC CONDITIONS (DRIVEWAYS, SIDE STREETS, ETC.).
 - THE ARROW BOARD SHOULD BE LOCATED INSIDE THE TAPER BEHIND THE CHANNELIZING DEVICES AS CLOSE TO THE BEGINNING OF THE TAPER AS POSSIBLE.
 - THIS PLAN DOES NOT APPLY TO SIGNALIZED OR MULTI-WAY STOP LOCATIONS.

LEGEND

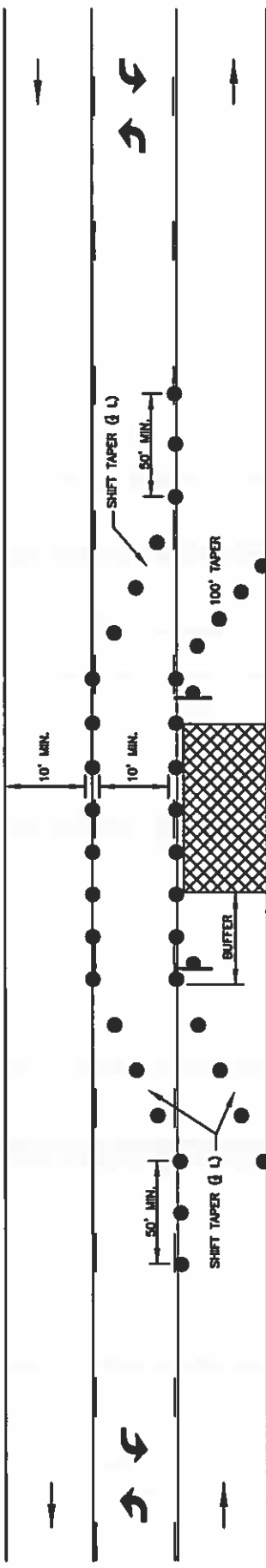
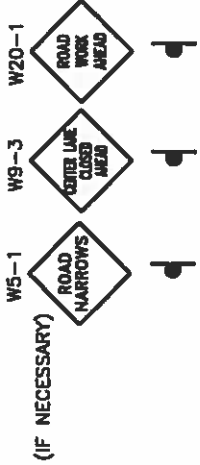
	DELINEATOR		ARROW BOARD
	SIGN		WORK AREA
	FLAGGER		TRAFFIC DIRECTION
	BARRICADE		
	VARIABLE MESSAGE SIGN		

POSTED SPEED LIMIT (MPH)	MERGE TAPER LENGTH (L)	DELINEATOR SPACING (TAPER/TAIL)	SIGN SPACING	BUFFER LENGTH
		/		

REVISIONS

NO.	DATE	BY	DESCRIPTION

ACHD
Traffic Engineering Division
3775 ADAMS STREET, SUITE 107, B 83714
www.achd.org



- NOTES**
- SEE TC-01 FOR SIGN DESCRIPTION. ALL WARNING SIGNS SHALL HAVE A BLACK LEGEND AND BORDER ON AN ORANGE BACKGROUND UNLESS OTHERWISE SPECIFIED.
 - SEE TC-02 FOR SIGN AND DELINEATOR SPACING, TAPER AND BUFFER LENGTHS. SIGN SPACING MAY BE INCREASED AND DELINEATOR SPACING MAY DECREASE FROM THE DISTANCES SHOWN IN THE TABLE BASED ON SITE SPECIFIC CONDITIONS (DRIVEWAYS, SIDE STREETS, ETC.).
 - THIS PLAN DOES NOT APPLY TO SIGNALIZED OR MULTI-WAY STOP LOCATIONS.
 - THE W1-3R AND W1-3L SIGNS SHALL BE USED WHEN THE POSTED SPEED LIMIT IS 30 MPH OR LESS. THE W1-4L AND W1-4R SIGNS SHALL BE USED WHEN THE POSTED SPEED LIMIT IS 35 MPH OR ABOVE. WORK ZONE SPEED LIMIT REDUCTIONS SHALL BE IMPLEMENTED ONLY WITH APPROVAL OF THE ACHD TRAFFIC ENGINEER.
 - ADDITIONAL W9-3 SIGNS MAY BE REQUIRED BASED ON THE LENGTH OF THE WORK ZONE AT THE DISCRETION OF THE ACHD TRAFFIC ENGINEER.

LEGEND

●	DELINEATOR	▤	ARROW BOARD
⊥	FLAGGER	▨	WORK AREA
+	BARRICADE	→ ←	TRAFFIC DIRECTION
—	VARIABLE MESSAGE SIGN		

POSTED SPEED LIMIT (MPH)	SHIFT TAPER LENGTH (L)	DELINEATOR SPACING (TAPER/TAN)	SIGN SPACING	BUFFER LENGTH
		/		

• SIGNATURES •

Number	079	Drawn By	Joshua Smith
Date	2/7/2018	Checked By	Joshua Smith
File	15-07288	Approved By	Steve Gray

• TYPICAL TRAFFIC CONTROL PLANS •

Side of Road - Work Area

Multilane Traffic Control - Right Lane Closure - Three Lanes

• STANDARD DETAIL NO. •

TC-27

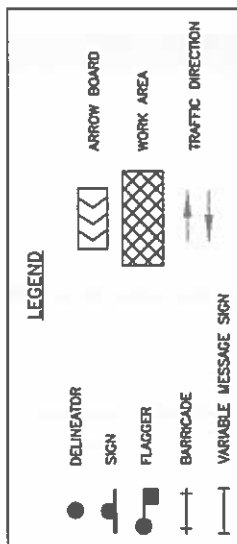
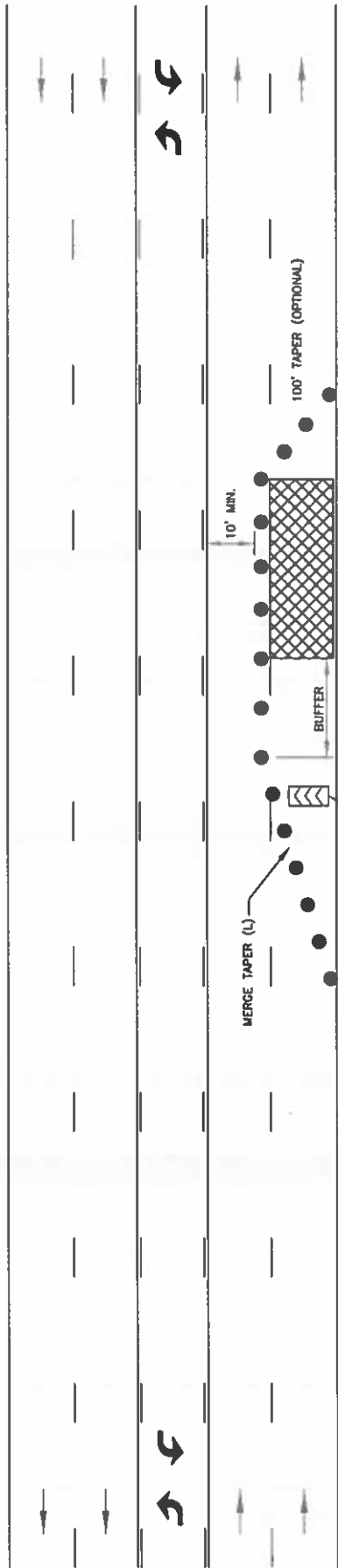
• REVISIONS •

NO.	DATE	BY	DESCRIPTION

Ads County Highway District

• 27th ANNUAL MEETING, 2017 •

W20-1



NOTES

1. SEE TC-01 FOR SIGN DESCRIPTION. ALL WARNING SIGNS SHALL HAVE A BLACK LEGEND AND BORDER ON AN ORANGE BACKGROUND UNLESS OTHERWISE SPECIFIED.
2. SEE TC-02 FOR SIGN AND DELINEATOR SPACING, TAPER AND BUFFER LENGTHS. SIGN SPACING MAY BE INCREASED AND DELINEATOR SPACING MAY DECREASE FROM THE DISTANCES SHOWN IN THE TABLE BASED ON SITE SPECIFIC CONDITIONS (DRIVEWAYS, SIDE STREETS, ETC.).
3. THE ARROW BOARD SHOULD BE LOCATED INSIDE THE TAPER BEHIND THE CHANNELIZING DEVICES AS CLOSE TO THE BEGINNING OF THE TAPER AS POSSIBLE.
4. THIS PLAN DOES NOT APPLY TO SIGNALIZED OR MULTI-WAY STOP LOCATIONS.

POSTED SPEED LIMIT (MPH)	MERGE TAPER LENGTH (L)	DELINEATOR SPACING (TAPER/75M)	SIGN SPACING	BUFFER LENGTH
		/		

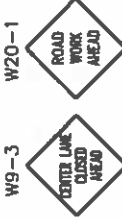
REVISIONS		SIGNATURES		STANDARD DETAIL NO.	
NO.	DATE	BY	DESCRIPTION	DATE	BY

TYPICAL TRAFFIC CONTROL PLANS
 Side of Road - Work Area
 Multilane Traffic Control - Right Lane Closure - Five Lanes

TC-29



W6-3
MOD

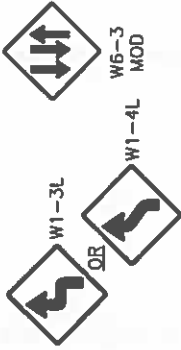
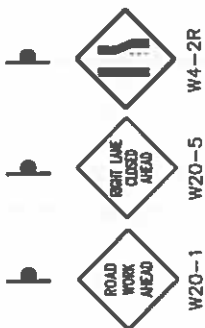
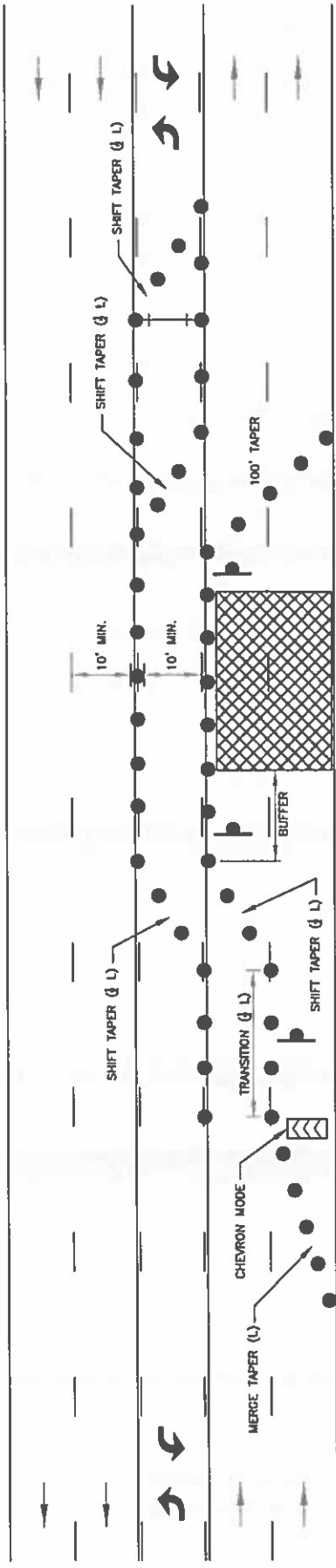


W9-3

W20-1



W20-1



NOTES

- SEE TC-01 FOR SIGN DESCRIPTION. ALL WARNING SIGNS SHALL HAVE A BLACK LEGEND AND BORDER ON AN ORANGE BACKGROUND UNLESS OTHERWISE SPECIFIED.
- SEE TC-02 FOR SIGN AND DELINEATOR SPACING, TAPER AND BUFFER LENGTHS. SIGN SPACING MAY BE INCREASED AND DELINEATOR SPACING MAY DECREASE FROM THE DISTANCES SHOWN IN THE TABLE BASED ON SITE SPECIFIC CONDITIONS (DIVERGENT, SIDE STREETS, ETC.).
- THIS PLAN DOES NOT APPLY TO SIGNALIZED OR MULTI-WAY STOP LOCATIONS.
- THE ARROW BOARD SHOULD BE LOCATED INSIDE THE TAPER BEHIND THE CHANNELIZING DEVICES AS CLOSE TO THE BEGINNING OF THE TAPER AS POSSIBLE.
- THE W1-3R AND W1-3L SIGNS SHALL BE USED WHEN THE POSTED SPEED LIMIT IS 30 MPH OR LESS. THE W1-4R AND W1-4L SIGNS SHALL BE USED WHEN THE POSTED SPEED LIMIT IS 35 MPH OR ABOVE. WORK ZONE SPEED LIMIT REDUCTIONS SHALL BE IMPLEMENTED ONLY WITH APPROVAL OF THE ACHD TRAFFIC ENGINEER.
- ADDITIONAL W6-3 SIGNS MAY BE REQUIRED BASED ON THE LENGTH OF THE WORK ZONE AT THE DISCRETION OF THE ACHD TRAFFIC ENGINEER.

LEGEND

	DELINEATOR
	SIGN
	FLAGGER
	BARRICADE
	VARIABLE MESSAGE SIGN
	ARROW BOARD
	WORK AREA
	TRAFFIC DIRECTION

POSTED SPEED LIMIT	MERGE TAPER LENGTH (L)	TRANSITION LENGTH (L)	SHIFT TAPER LENGTH (L)	DELINEATOR SPACING (TAPER/TAN.)	SIGN SPACING	BUFFER LENGTH
				/		

• REVISIONS •

NO.	DATE	BY	DESCRIPTION
1			
2			
3			
4			
5			

• SIGNATURES •

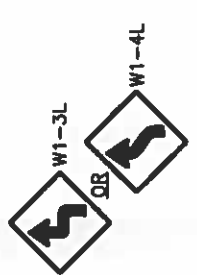
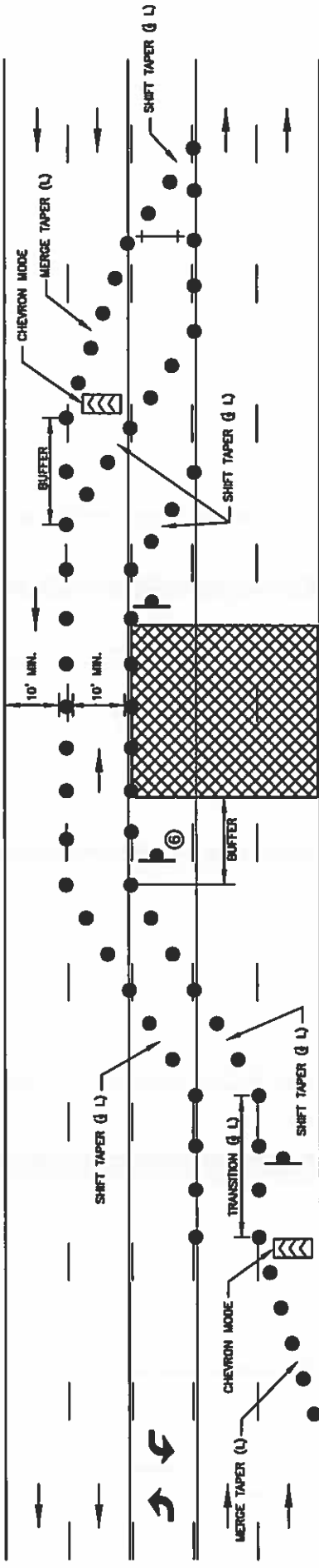
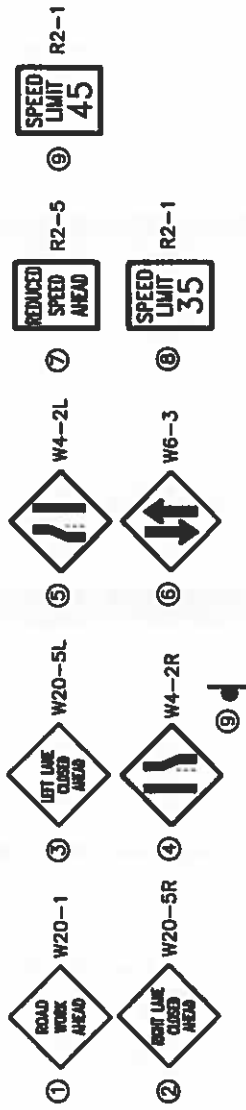
Drawn By	Checked By
Design By	Approved By
File: TC-302007	

• TYPICAL TRAFFIC CONTROL PLANS •
Interior of Road - Work Area
Multilane Traffic Control - Dual Right Lane Closure - Five Lanes

• STANDARD DETAIL NO. •
TC-30

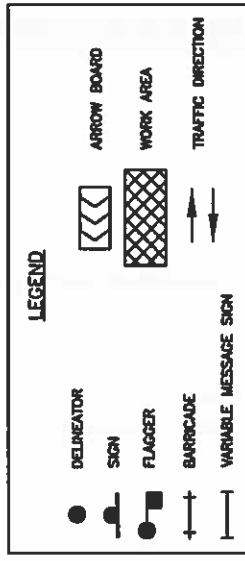
• 3778 ADAMS STREET, GARDEN CITY, ID 83714 •
Add County Highway District

ADVANCE WORK ZONE SIGNAGE



NOTES

- SEE TC-01 FOR SIGN DESCRIPTION. ALL WARNING SIGNS SHALL HAVE A BLACK LEGEND AND BORDER ON AN ORANGE BACKGROUND UNLESS OTHERWISE SPECIFIED.
- SEE TC-02 FOR SIGN AND DELINEATOR SPACING, TAPER AND BUFFER LENGTHS. SIGN SPACING MAY BE INCREASED AND DELINEATOR SPACING MAY DECREASE FROM THE DISTANCES SHOWN IN THE TABLE BASED ON SITE SPECIFIC CONDITIONS (DRIVEWAYS, SIDE STREETS, ETC.).
- THIS PLAN DOES NOT APPLY TO SIGNALIZED OR MULTI-WAY STOP LOCATIONS.
- THE ARROW BOARD SHOULD BE LOCATED INSIDE THE TAPER BEHIND THE CHANNELIZING DEVICES AS CLOSE TO THE BEGINNING OF THE TAPER AS POSSIBLE.
- THE W1-3R AND W1-3L SIGNS SHALL BE USED WHEN THE POSTED SPEED LIMIT IS 30 MPH OR LESS. THE W1-4R AND W1-4L SIGNS SHALL BE USED WHEN THE POSTED SPEED LIMIT IS 35 MPH OR ABOVE. WORK ZONE SPEED LIMIT REDUCTIONS SHALL BE IMPLEMENTED ONLY WITH APPROVAL OF THE ACHD TRAFFIC ENGINEER.
- ADDITIONAL W6-3 SIGNS MAY BE REQUIRED BASED ON THE LENGTH OF THE WORK ZONE AT THE DISCRETION OF THE ACHD TRAFFIC ENGINEER.

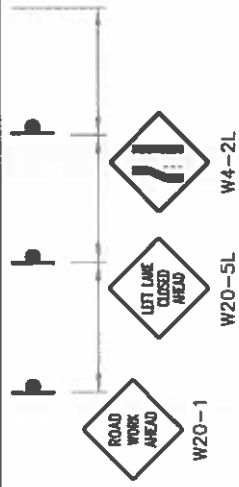
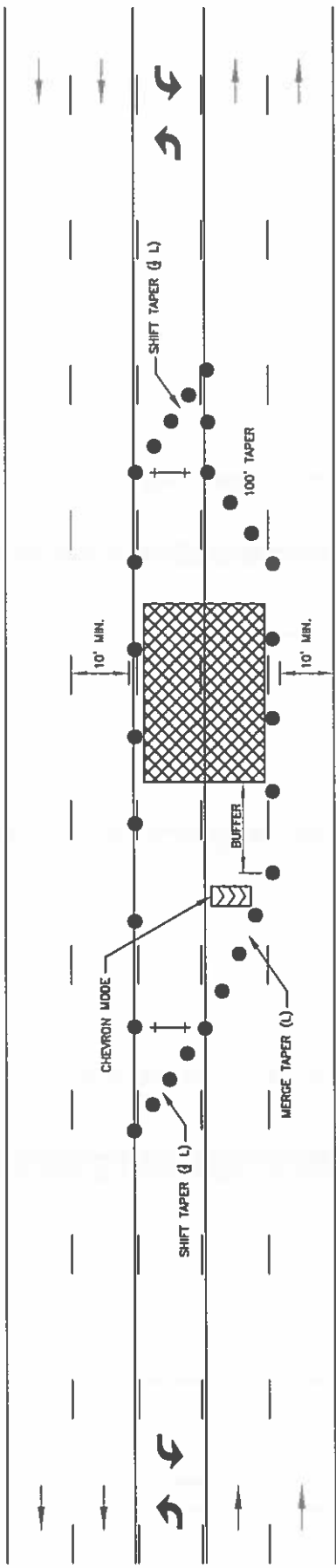
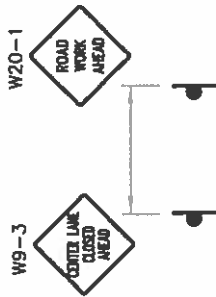


POSTED SPEED LIMIT	MERGE TAPER LENGTH (L)	TRANSITION LENGTH (L)	SHIFT TAPER LENGTH (L)	DELINEATOR SPACING (TAPER/TMA)	SIGN SPACING	BUFFER LENGTH
				/		

DATE: _____ BY: _____
 CHECKED BY: _____
 APPROVED BY: _____
 TITLE: _____
 PROJECT: _____
 SHEET NO.: _____ OF _____
 STANDARD DETAIL NO.: TC-30A

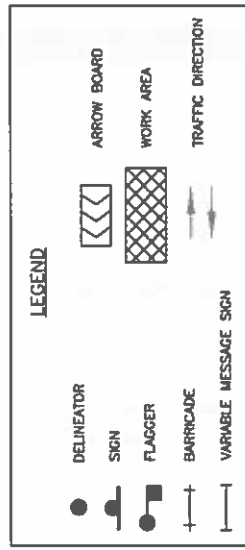
TITLE: Interior of Road - Work Area
 PROJECT: Multilane Traffic Control - Three Lane Closure - Five Lane Roadway

ACHD
 Traffic Engineering Division
 3775 40th Street, Suite 201, B 88716
 www.achd.org



NOTES

- SEE TC-01 FOR SIGN DESCRIPTION. ALL WARNING SIGNS SHALL HAVE A BLACK LEGEND AND BORDER ON AN ORANGE BACKGROUND UNLESS OTHERWISE SPECIFIED.
- SEE TC-02 FOR SIGN AND DELINEATOR SPACING, TAPER AND BUFFER LENGTHS. SIGN SPACING MAY BE INCREASED AND DELINEATOR SPACING MAY DECREASE FROM THE DISTANCES SHOWN IN THE TABLE BASED ON SITE SPECIFIC CONDITIONS (DRIVEWAYS, SIDE STREETS, ETC.).
- THIS PLAN DOES NOT APPLY TO SIGNALIZED OR MULTI-WAY STOP LOCATIONS.
- THE ARROW BOARD SHOULD BE LOCATED INSIDE THE TAPER BEHIND THE CHANNELIZING DEVICES AS CLOSE TO THE BEGINNING OF THE TAPER AS POSSIBLE.



POSTED SPEED LIMIT	MERGE TAPER LENGTH (L)	SHIFT TAPER LENGTH (L)	DELINEATOR SPACING (TAPER/TAN.)	SIGN SPACING	BUFFER LENGTH
			/		

REVISIONS

NO.	DATE	BY	DESCRIPTION

SIGNATURES

Drawn By: Jonathan Bush	
Design By: Jonathan Bush	
Checked By: [Signature]	
Approved By: Mike Dyer	

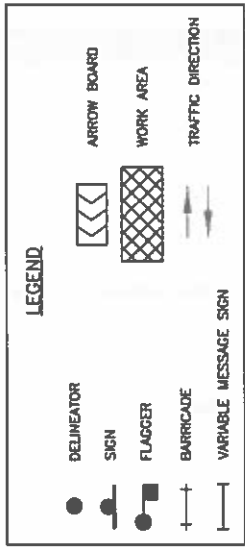
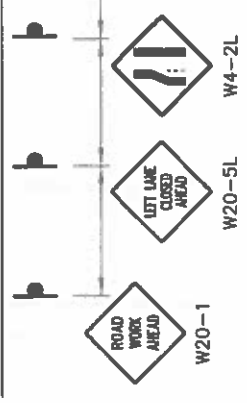
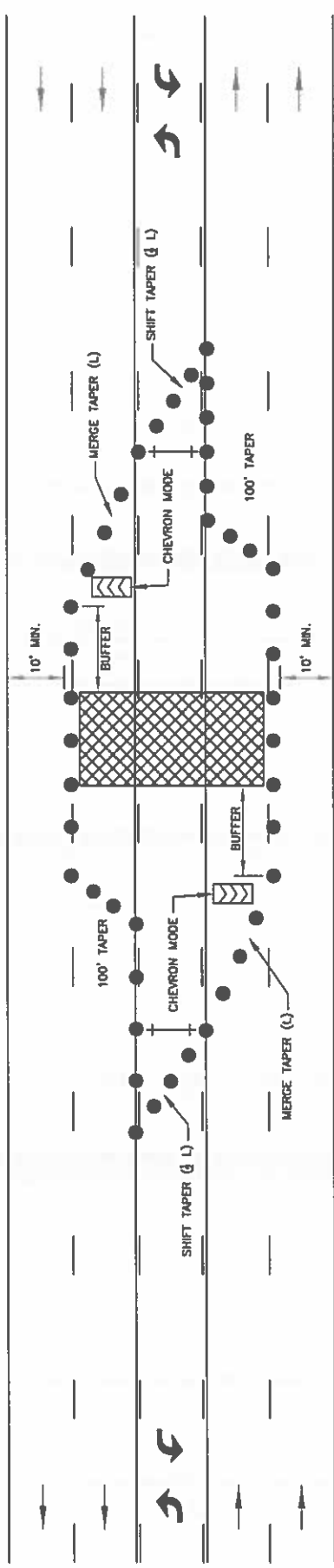
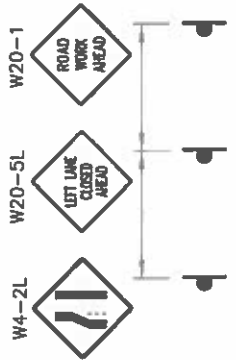
ACHD
Traffic Engineering Division
www.achd.net

3775 ANAND STREET, GAITHERSBURG, MD 20878

Multi-lane Traffic Control - Center/Left Lane Closure - Five Lanes

Interior of Road - Work Area

STANDARD DETAIL NO. **TC-31**



NOTES

1. SEE TC-01 FOR SIGN DESCRIPTION. ALL WARNING SIGNS SHALL HAVE A BLACK LEGEND AND BORDER ON AN ORANGE BACKGROUND UNLESS OTHERWISE SPECIFIED.
2. SEE TC-02 FOR SIGN AND DELINEATOR SPACING, TAPER AND BUFFER LENGTHS. SIGN SPACING MAY BE INCREASED AND DELINEATOR SPACING MAY DECREASE FROM THE DISTANCES SHOWN IN THE TABLE BASED ON SITE SPECIFIC CONDITIONS (DRIVEWAYS, SIDE STREETS, ETC.).
3. THIS PLAN DOES NOT APPLY TO SIGNALIZED OR MULTI-WAY STOP LOCATIONS.
4. THE ARROW BOARD SHOULD BE LOCATED INSIDE THE TAPER BEHIND THE CHANNELIZING DEVICES AS CLOSE TO THE BEGINNING OF THE TAPER AS POSSIBLE.

POSTED SPEED LIMIT	MERGE TAPER LENGTH (L)	SHIFT TAPER LENGTH (L)	DELINEATOR SPACING (TAPER/TAN.)	SIGN SPACING	BUFFER LENGTH
			/		

REVISIONS:
 No. | DATE | BY | DESCRIPTION

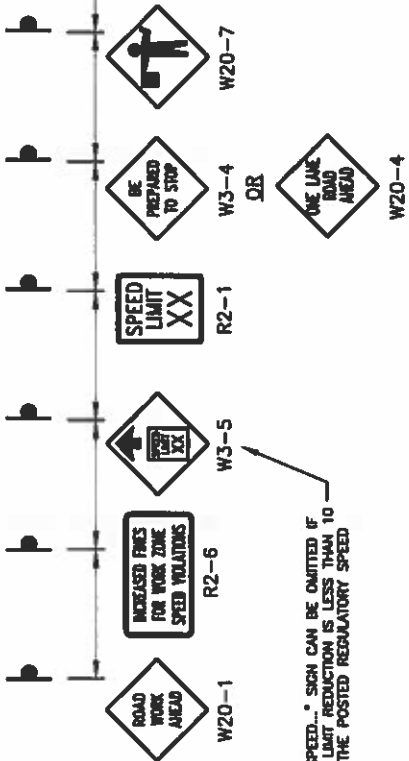
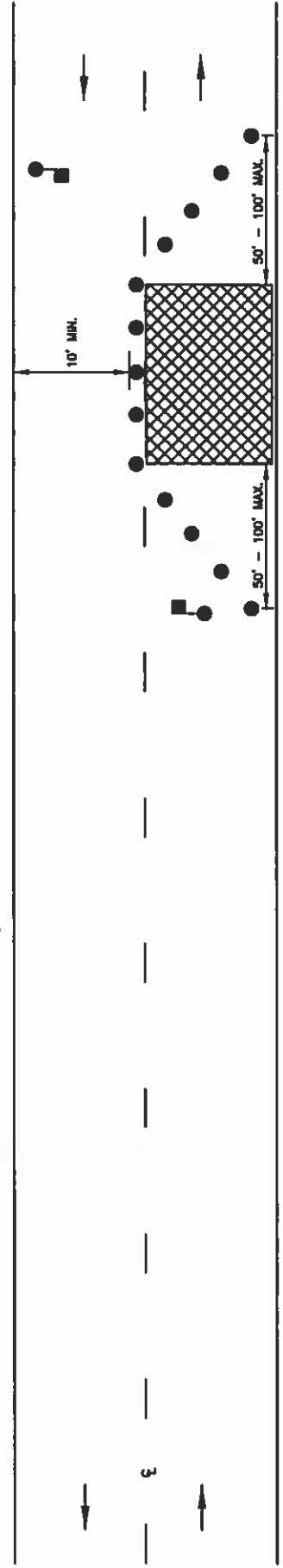
SCHAFFNER'S:
 Center of Road - Work Area
 Multilane Traffic Control - Center/Left Lane Closures - Five Lanes

DESIGNER:
 Drawn By: Justin Bush
 Date: 5/3/2012
 File: TC-32.dwg

APPROVAL:
 Approved By: Alan Oyam

STANDARD DETAIL NO.:
TC-32

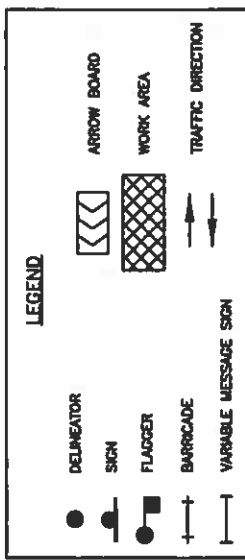
ACHD
 Traffic Engineering Division
 3775 Adams Street, Suite 100
 Ada, Oklahoma 73401



REDUCED SPEED... SIGN CAN BE OMITTED IF THE SPEED LIMIT REDUCTION IS LESS THAN 10 MPH FROM THE POSTED REGULATORY SPEED

NOTES

- SEE TC-01 FOR SIGN DESCRIPTION. ALL WARNING SIGNS SHALL HAVE A BLACK LEGEND AND BORDER ON AN ORANGE BACKGROUND UNLESS OTHERWISE SPECIFIED.
- SEE TC-02 FOR SIGN AND DELINEATOR SPACING, TAPER AND BUFFER LENGTHS. SIGN SPACING MAY BE INCREASED AND DELINEATOR SPACING MAY DECREASE FROM THE DISTANCES SHOWN IN THE TABLE BASED ON SITE SPECIFIC CONDITIONS (DRIVEWAYS, SIDE STREETS, ETC.).
- THIS PLAN DOES NOT APPLY TO SIGNALIZED OR MULTI-WAY STOP LOCATIONS.
- WORK ZONE SPEED LIMIT REDUCTIONS SHALL BE IMPLEMENTED ONLY WITH THE APPROVAL OF THE ACHD TRAFFIC ENGINEER.
- SPEED ZONE SIGNAGE SHALL ONLY REMAIN IN PLACE FOR AS LONG AS THE REDUCED SPEED CONDITION APPLIES.
- ONE DIRECTION OF ADVANCE SIGNAGE IS SHOWN ONLY. SIMILAR SIGNAGE APPLIES TO THE OPPOSITE DIRECTION OF TRAVEL.
- A BUFFER SPACE MAY BE INCLUDED AS PART OF THE WORK ZONE BASED ON SITE SPECIFIC CONDITIONS (HORIZONTAL AND VERTICAL ROADWAY ALIGNMENT, DRIVEWAYS, ETC.).
- FLAGGING TAPER SHALL BE A MINIMUM OF 50' IN LENGTH (100' MAX.) AND CONSIST OF AT LEAST FIVE (5) EVENLY SPACED CHANNELIZING DEVICES.
- EYE CONTACT SHALL BE MAINTAINED BETWEEN FLAGGERS. IF THIS IS NOT FEASIBLE, TWO-WAY COMMUNICATION SHALL BE EMPLOYED.



POSTED SPEED LIMIT (MPH)	TAPER LENGTH (L)	DELINEATOR SPACING (TAPER/TAM.)	SIGN SPACING	BUFFER LENGTH
	50-100' (MAX.) (FOR FLAGGING)	/		

REVISIONS

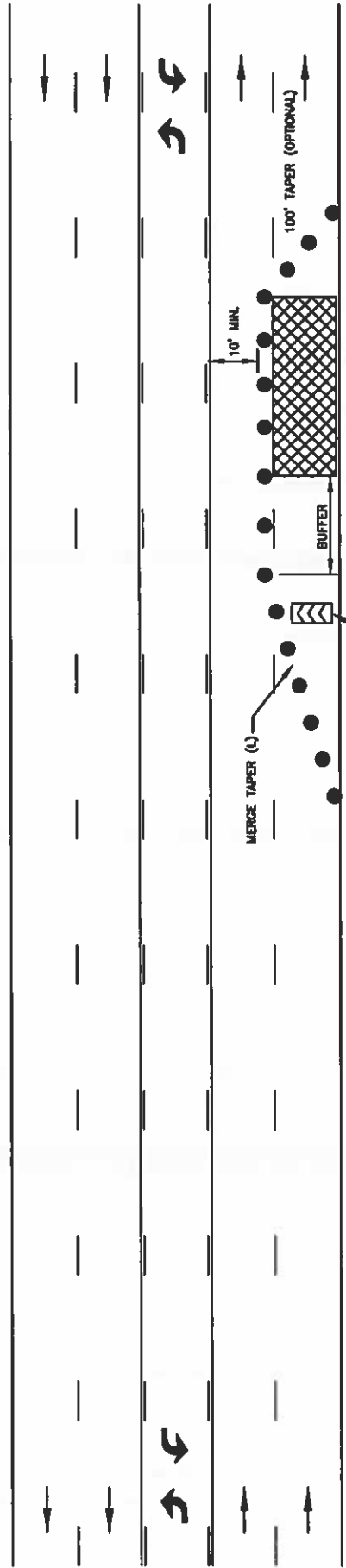
NO.	DATE	BY	DESCRIPTION
A	12/20/14	AS	Issue revisions
A	11/20/14	AS	Revised taper length
A			
A			

• STANDARD DETAIL NO. •
Speed Reduction Zones w/Flaggers
 TC-33

• 3776 JUNE 2008 (REVISED) SECTION 02714
 Ada County Highway District
 Traffic Engineering Division
 Approved By: [Signature]

R2-1

SPEED LIMIT SIGN INSTALLED TO INDICATE END OF REDUCED SPEED AREA



- W20-1 ROAD WORK AHEAD
- R2-6 INCREASED FINES FOR WORK ZONE SPEED VIOLATIONS
- W3-5 WORK ZONE AHEAD
- R2-1 SPEED LIMIT XX
- W20-5a RIGHT LANE CLOSED AHEAD
- W4-2R NARROW ROAD AHEAD

REDUCED SPEED SIGN CAN BE OMITTED IF THE SPEED LIMIT REDUCTION IS LESS THAN 10 MPH FROM THE POSTED REGULATORY SPEED

NOTES

1. SEE TC-01 FOR SIGN DESCRIPTION. ALL WARNING SIGNS SHALL HAVE A BLACK LEGEND AND BORDER ON AN ORANGE BACKGROUND UNLESS OTHERWISE SPECIFIED.
2. SEE TC-02 FOR SIGN AND DELINEATOR SPACING, TAPER AND BUFFER LENGTHS. SIGN SPACING MAY BE INCREASED AND DELINEATOR SPACING MAY DECREASE FROM THE CONDITIONS SHOWN IN THE TABLE BASED ON SITE SPECIFIC CONDITIONS (DRIVEWAYS, SIDE STREETS, ETC.).
3. THIS PLAN DOES NOT APPLY TO SIGNALIZED OR MULTI-WAY STOP LOCATIONS.
4. WORK ZONE SPEED LIMIT REDUCTIONS SHALL BE IMPLEMENTED ONLY WITH THE APPROVAL OF THE ACHD TRAFFIC ENGINEER.
5. SPEED ZONE SIGNAGE SHALL ONLY REMAIN IN PLACE FOR AS LONG AS THE REDUCED SPEED CONDITION APPLIES.
6. ONE DIRECTION OF ADVANCE SIGNAGE IS SHOWN ONLY. SIMILAR SIGNAGE MAY APPLY TO THE OPPOSITE DIRECTION OF TRAVEL.

LEGEND

●	DELINEATOR	◀◀◀	ARROW BOARD
○	SIGN	▨	WORK AREA
◀	FLAGGER	→	TRAFFIC DIRECTION
+	BARBICADE		
—	VARIABLE MESSAGE SIGN		

POSTED SPEED LIMIT (MPH)	MERGE TAPER LENGTH (L)	DELINEATOR SPACING (TAPER/TAN.)	SIGN SPACING	BUFFER LENGTH
		/		

REVISIONS

NO.	DATE	BY	DESCRIPTION
1	11/17/2014	AS	Issue resolution
2			
3			
4			
5			

ACHD
Traffic Engineering Division
3778 Adams Street, Adams City, MO 65714
www.achd.org

SIGNATURES

Drawn By: [Signature]	Checked By: [Signature]
Design By: [Signature]	Approved By: [Signature]

TYPICAL TRAFFIC CONTROL PLANS

Speed Reduction Zones - Multilane Facilities

STANDARD DETAIL NO. TC-34