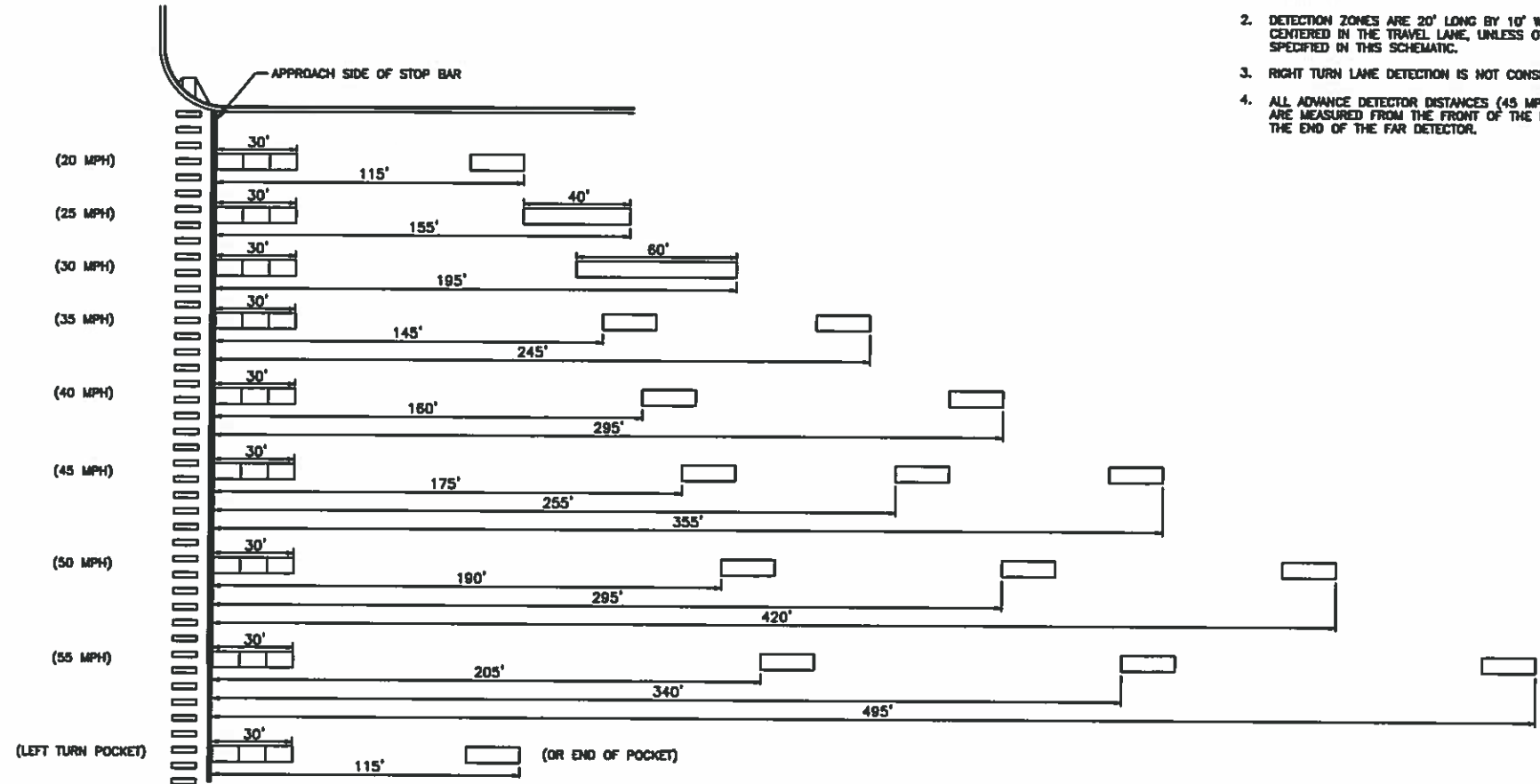


NOTES:

1. DRAWING IS NOT TO SCALE.
2. DETECTION ZONES ARE 20' LONG BY 10' WIDE AND CENTERED IN THE TRAVEL LANE, UNLESS OTHERWISE SPECIFIED IN THIS SCHEMATIC.
3. RIGHT TURN LANE DETECTION IS NOT CONSIDERED.
4. ALL ADVANCE DETECTOR DISTANCES (45 MPH AND GREATER) ARE MEASURED FROM THE FRONT OF THE NEAR DETECTOR TO THE END OF THE FAR DETECTOR.



▲			
▲			
▲			
▲	6/10	SP	Modified detector zone spacing
▲	NO. 2470	BY	UNSPECIFIED



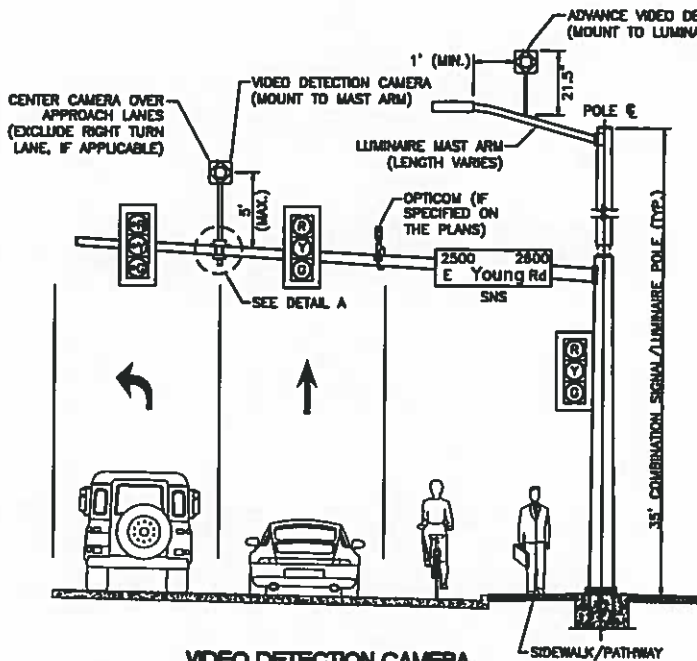
- SIGNATURES -	
Drawn BY	Checked BY: Joshua Steele
Date: 12/28/16	Design BY: Phil Stone
File: 33-1102.01.000	Approved: [Signature]

- SHEET TITLE -
Standard Video Detection
Zone Spacing Detail

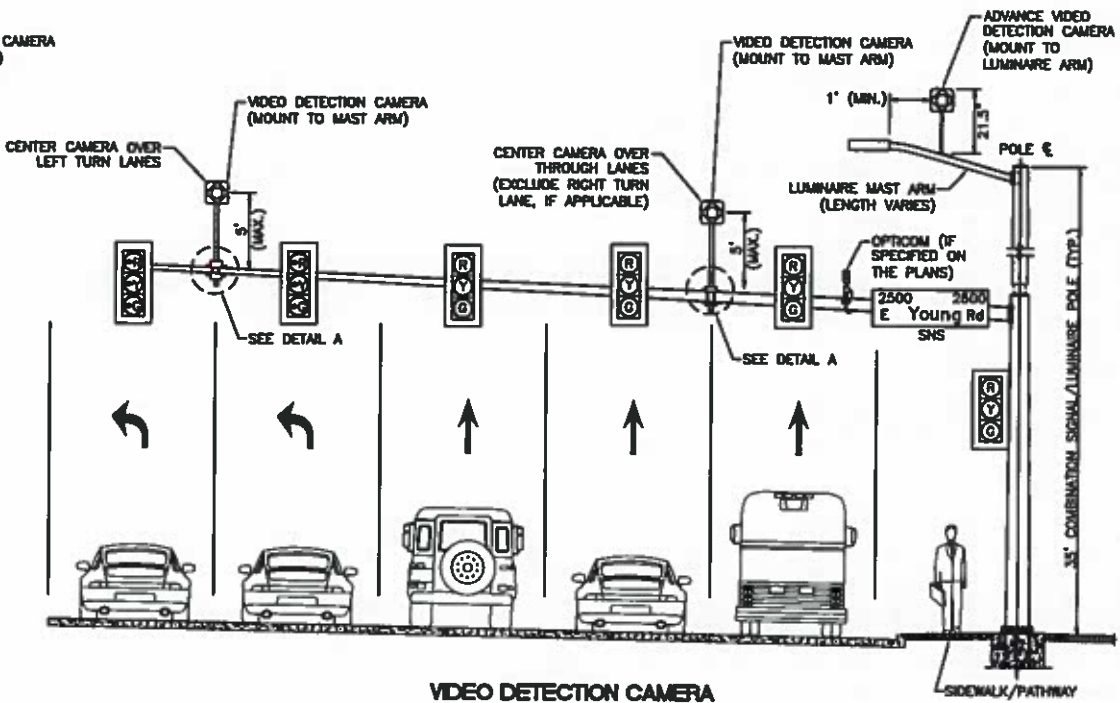
12/28/2016



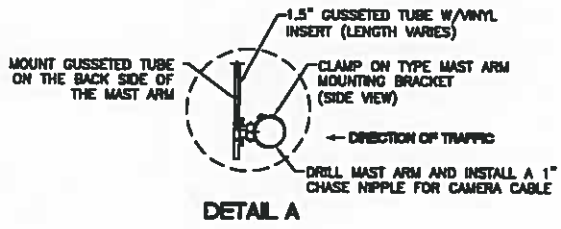
REVISIONS CONTROL NO. TS-1102.01



VIDEO DETECTION CAMERA MOUNTING DETAILS (FOUR OR FEWER APPROACH LANES)



VIDEO DETECTION CAMERA MOUNTING DETAILS (FIVE APPROACH LANES)



DETAIL A

NOTES:

1. DRAWING IS NOT TO SCALE.
2. VIDEO DETECTION CAMERAS SHALL BE CENTERED OVER THE APPROACH LANES (EXCLUDING RIGHT TURN LANES). MINOR VARIATIONS WILL BE PERMITTED SHOULD SIGNAL HEADS, MAST ARM MOUNTED SIGNS OR OPTICOM DEVICES INTERFERE WITH PRECISE CENTER PLACEMENT.
3. AN ADVANCE VIDEO DETECTION CAMERA (MOUNTED ON THE LUMINAIRE ARM) SHALL BE PROVIDED ONLY IF THE POSTED SPEED LIMIT OF THE APPROACHING ROADWAY IS GREATER THAN 45 MPH. THE CAMERA SHALL BE MOUNTED IN THE SAME DIRECTION AS THE MAST ARM MOUNTED CAMERA. DESIGN EXCEPTIONS MAY BE NECESSARY IF SITE CONDITIONS PREVENT LUMINAIRE INSTALLATION ON THE GIVEN APPROACH.
4. TWO VIDEO DETECTION CAMERAS SHALL BE INSTALLED IF THE NUMBER OF APPROACHING LANES IS GREATER THAN FOUR (EXCLUDING RIGHT TURN LANES). ONE CAMERA SHALL ACCOMMODATE LEFT TURNING VEHICLES (ONE OR TWO LANES), THE OTHER CAMERA SHALL ACCOMMODATE THROUGH TRAFFIC.

12/28/2016

NO.	DATE	BY	DESCRIPTION



Designer: JTB Checker: JTB/MS/LJ Date: 12/28/16 File: TS-1102.02.dwg	Drawn By: Andrew Shultz Design By: Andrew Shultz Approved By: Jim Leary
---	---

PROJECT TITLE:
Standard Video Detection Camera Mounting Detail



TS-1102.02
Sheet 2 of 2