

# Description

1



## ORCHARD TO ROOSEVELT

Construct curb, gutter and sidewalk where missing on south side of Alpine Street within the public right-of-way

## ROOSEVELT TO RANDALL

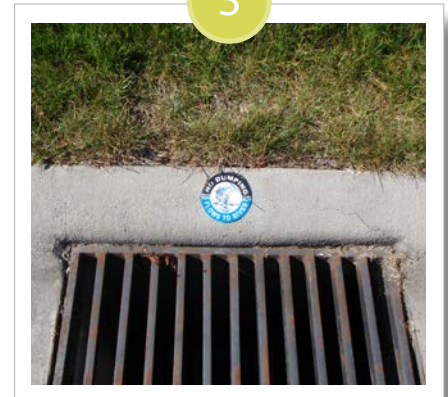
Improve driveway approaches, pedestrian ramps and sidewalk as needed to meet modern ADA\* standards

2



Retain on-street parking on both sides of the street

3



Improve storm drain system

## PROJECT PURPOSE

- Improve pedestrian safety and connectivity

*\*Americans with Disabilities Act*