

# ALTERNATIVE D INTERSECTION AND BICYCLE/PEDESTRIAN IMPROVEMENTS W/ MEDIANS

Broadway/Warm Springs/Ave B  
Intersection

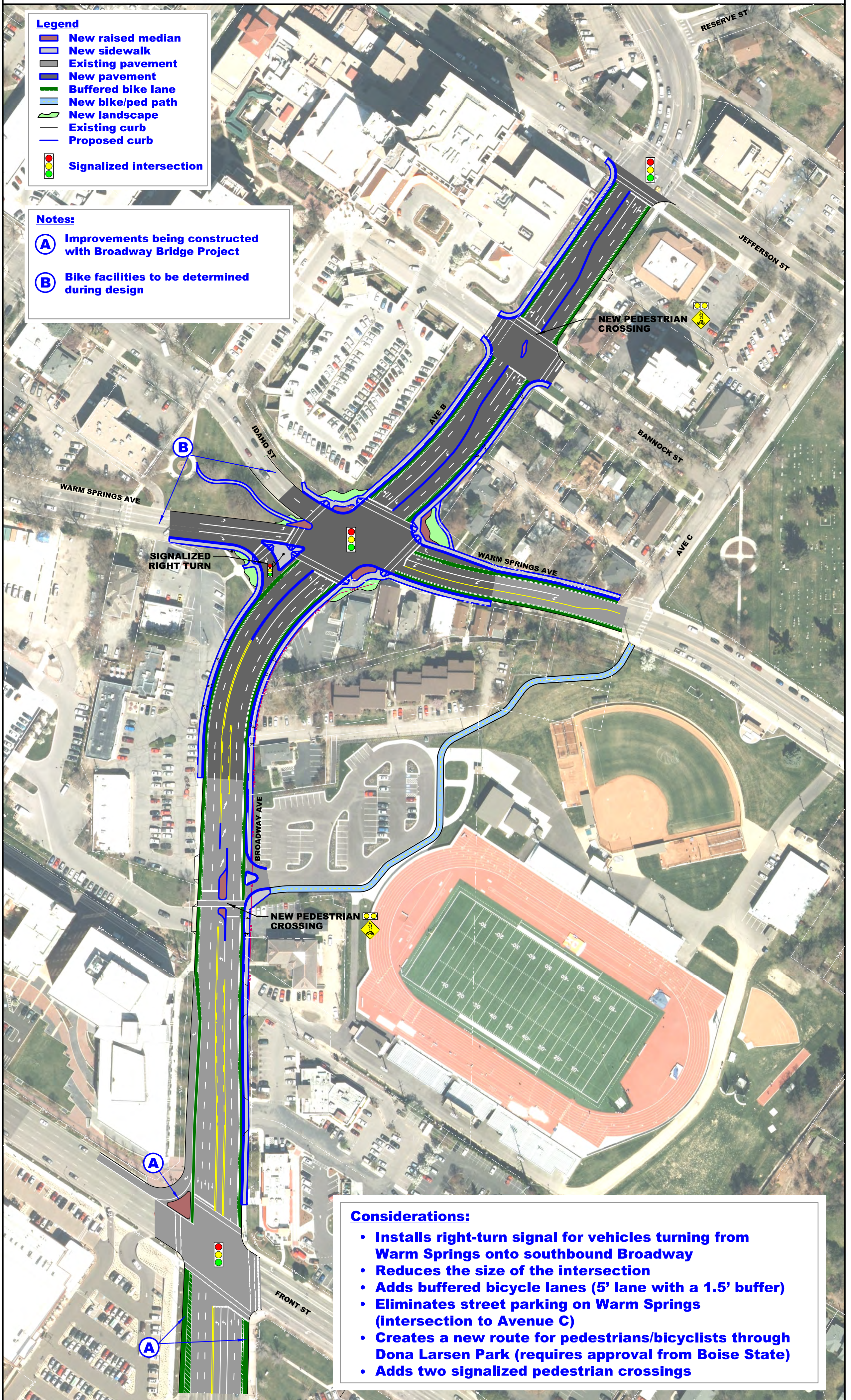


05/23/2016  
2013 Aerial Photo

Parametrix  
ENGINEERING, PLANNING, ENVIRONMENTAL SCIENCES

- Legend**
- New raised median
  - New sidewalk
  - Existing pavement
  - New pavement
  - Buffered bike lane
  - New bike/ped path
  - New landscape
  - Existing curb
  - Proposed curb
  - Signalized intersection

- Notes:**
- (A)** Improvements being constructed with Broadway Bridge Project
  - (B)** Bike facilities to be determined during design



**Considerations:**

- Installs right-turn signal for vehicles turning from Warm Springs onto southbound Broadway
- Reduces the size of the intersection
- Adds buffered bicycle lanes (5' lane with a 1.5' buffer)
- Eliminates street parking on Warm Springs (intersection to Avenue C)
- Creates a new route for pedestrians/bicyclists through Dona Larsen Park (requires approval from Boise State)
- Adds two signalized pedestrian crossings