

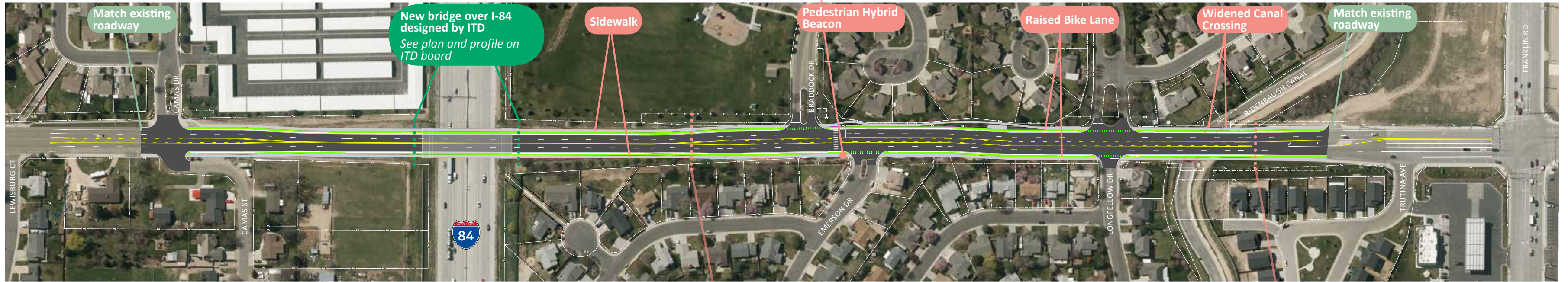
# Roadway Improvements



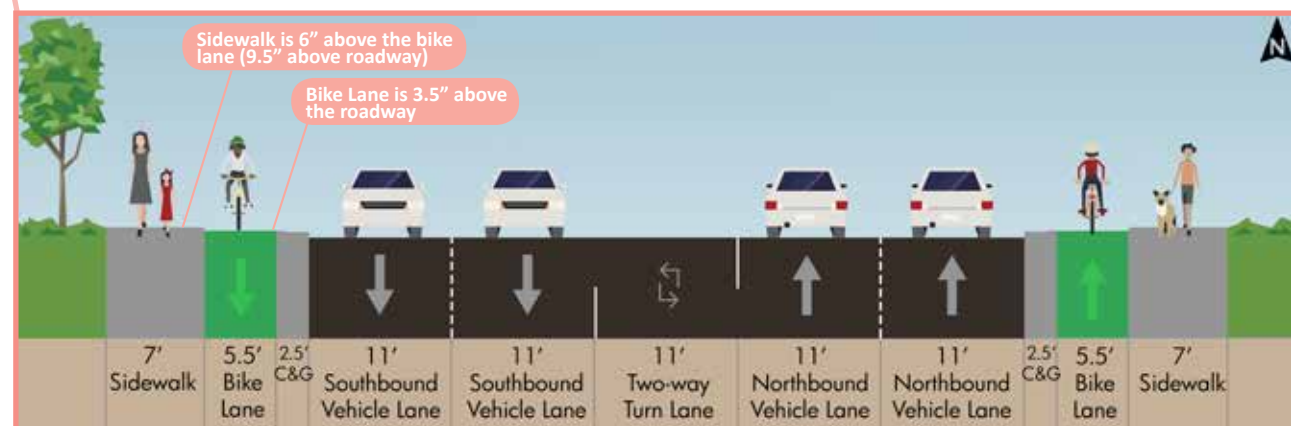
## Pedestrian Hybrid Beacon

Pedestrian activated beacon, unlit when not in use, begins with a yellow light alerting drivers to slow, and then a solid red light requiring drivers to stop while pedestrians have the right-of-way to cross the street.

ADVANTAGES	CHALLENGES	LOCATION TYPE
<ul style="list-style-type: none"> <li>A very high rate of motorists yielding to pedestrians</li> <li>Drivers don't have to wait as long at hybrid beacons compared to other signalized intersections</li> </ul>	<ul style="list-style-type: none"> <li>Expensive compared to other crossing treatments</li> <li>Requires pedestrian activation</li> </ul>	<ul style="list-style-type: none"> <li>Larger roadways where mid-block crossing is difficult or crossing opportunities are limited</li> <li>School walk route connectivity</li> </ul>



### Typical Section



Cloverdale Road Overpass & Roadway Project

August 2018