

THE IFYWP

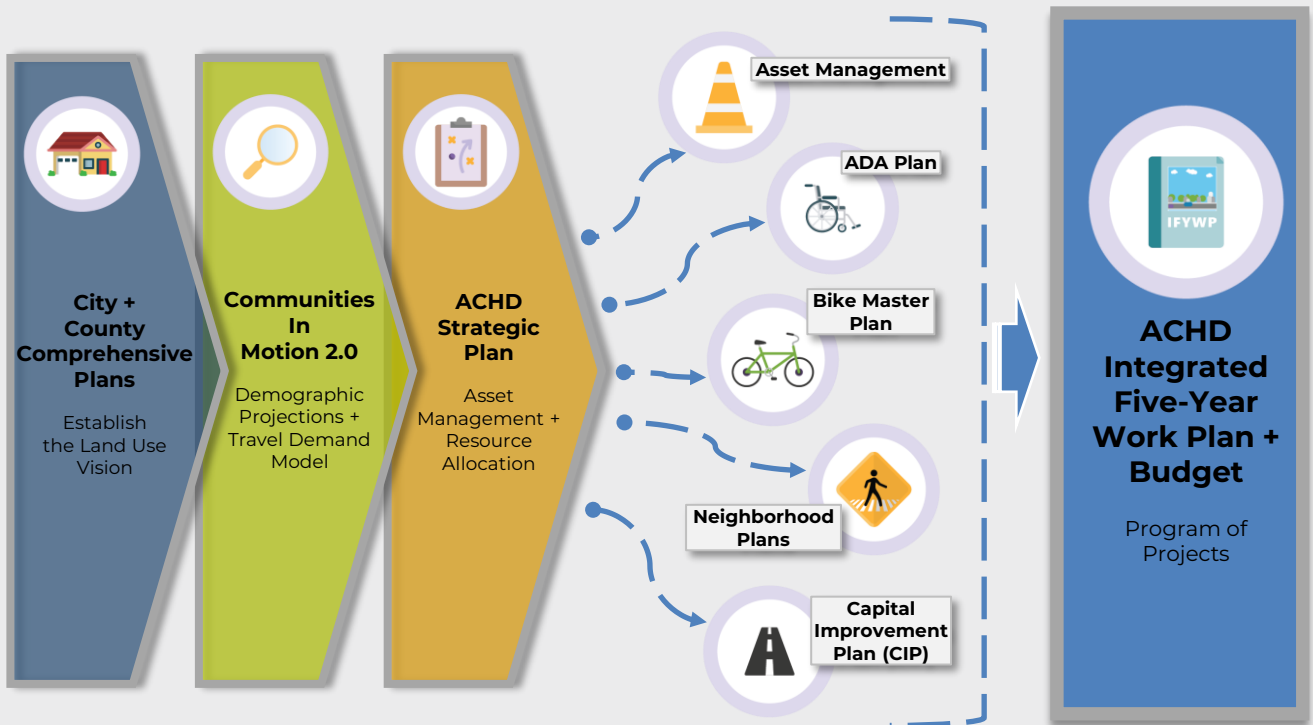
ACHD'S VISION

Leading Transportation Innovation – Investing in Communities

INTRODUCTION

The 2024-2028 Integrated Five-Year Work Program (IFYWP) sets forth the strategies, projects and priorities which the Ada County Highway District (ACHD) will pursue over the next five years. The first two years of the Plan align with ACHD's 2024 Budget, adopted on August 23, 2023. The remaining years set the focus for ACHD's efforts for future budget years. The document allows elected officials, staff, partner agencies, and the public to work in a coordinated fashion to implement projects.

The IFYWP works in support of various ACHD and partner agency foundational planning documents and is the implementing arm for these plans. The figure to the right illustrates how the IFYWP fits into the region's overall planning framework.



FOCUSED INVESTMENT

IMPLEMENTING THE STRATEGIC PLAN

ACHD established its vision, mission, and priorities in 2011, with the intent of ensuring that all ACHD activities are focused on the best interest of the citizens we serve. The bottom line is that every choice ACHD makes must help to effectively and efficiently accomplish ACHD's Vision, Mission and Priorities.

In June 2016, the ACHD Commission adopted a Strategic Plan to further clarify the intent of its vision, mission, and priorities. The Plan included a resource allocation methodology that informs and guides development of the IFYWP. That methodology, further revised in 2019, guides the programming and project selection decisions for the IFYWP.

REVENUE ALLOCATION METHODOLOGY



1

SAFETY + MAINTENANCE

- Signals, Crossings, & Safety Projects
- Asset Management – Capital Maintenance & Bridges

2

SYSTEM ENHANCEMENTS

- Neighborhood Plan & Bike Master Plan Projects (Not Funded by Vehicle Registration Fees)
- Capital Improvement Plan Projects

+

PROGRAMMING OBLIGATIONS

- ADA & Environmental Compliance
- Vehicle Registration Fee (VRF) Ballot Commitments
- General Fund Support of Impact Fee Collections

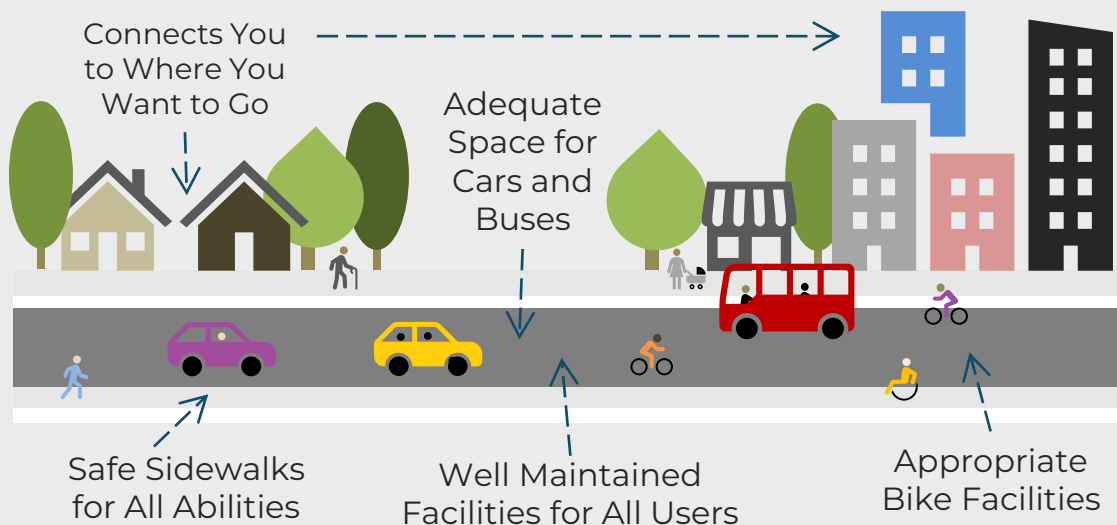
TRANSPORTATION CHOICE

ACHD SUPPORTS YOU HOWEVER YOU
CHOOSE TO TRAVEL

ACHD'S COMPLETE STREETS GUIDING PRINCIPLE

Streets, bridges and transit stops within Ada County should be designed, constructed, operated and maintained so that pedestrians, bicyclists, transit riders, motorists, and people of all ages and abilities can travel safely and independently.
([ACHD Policy Manual Section 3110.2](#))

ANATOMY OF A COMPLETE STREET



NEIGHBORHOOD INVESTMENTS

ACHD SUPPORTS YOU
WHERE YOU LIVE

ACHD'S MISSION

We drive quality transportation for all Ada County – Anytime, Anywhere!



DID YOU KNOW?

In 2021, ACHD completed its first cycle of Neighborhood Bike and Pedestrian Plans. This initial cycle helped establish a vision for build out of a bike and pedestrian network for all areas of Ada County. In the next cycles, ACHD will revisit each of the previously planned areas to report on progress and to make any updates to the planned network. These next cycles will also include a review and update of ACHD's facility accessibility inventory as well as a safety review for each area.

Boise Central Bench + Meridian Downtown + Kuna Downtown Corridor

Boise West Bench + Boise Downtown + Boise Southeast



Kuna + Meridian South

Garden City + Meridian North

Eagle + Boise North (VMP/WWP)

Boise Southwest + Star

UPCOMING NEIGHBORHOOD PLAN CYCLE

- 2023 Boise West Bench + Meridian Downtown
- 2024 Boise Southeast
- 2025 Boise Northwest
- 2026 Boise North
- 2027 Boise Downtown + Boise East End
- 2028 Boise Southwest + Star
- 2029 Eagle
- 2030 Garden City + Meridian North
- 2031 Kuna + Meridian South

NEIGHBORHOOD INVESTMENTS

NEIGHBORHOOD PLANNING AREAS



NEIGHBORHOOD PLAN PROJECT IMPACT



1379
IDENTIFIED
Projects Since 2012



301
COMPLETED
Projects Since 2012



230
IN IFYWP
Based on 2024-2028
IFYWP Draft

EXTERNAL FUNDING PLAN

The funding plan portion of the IFYWP focuses external funding efforts on the Commission's approved focus areas adopted in the ACHD Strategic Plan (2016). External funding comes from funding sources that are not codified by State of Idaho code or fee regiment for use by the Ada County Highway District, with most of these funds coming from Federal Highway Administration programs. The funding plan ensures funding application efforts are timely and supported by the Commission. **All local match funding will be reviewed and approved by Commission when the project agreement is presented for approval.**

Primary Focus Projects

Seeking external funding for maintenance, safety and Americans With Disabilities Act (ADA) projects is a primary focus area of the Strategic Plan.

Federal Capital Improvements

ACHD currently receives Surface Transportation Block Grant Program (STBG) Transportation Management Area (TMA) funding for qualified, capital improvements on Federal-aid Highway System Arterials and Collectors. Per Communities in Motion 2050, COMPASS programs 82% of STBG TMA funding for ACHD's roadway improvement needs, including but not limited to overlays, reclaims, rebuilds and micro seals^[1]. Starting in 2027, COMPASS will program 72% of STBG TMA funding for ACHD'S roadway improvements. Per the Commission's direction, staff are taking an integrated approach to all maintenance projects, which now includes evaluating all sidewalk and bike facility needs. The federal match requirement for STBG funding is 7.34% of project cost. Federal improvement projects and treatments are identified by Pavement Management staff at the time of design.

[1] 2021 -2025 funding need based on a Pavement Condition Index (PCI) of 85, and 0% Inflation and Interest rate for Arterials, Collectors and Residential.

Federal Capital Improvements (Continued)

The following estimated five-year capital improvement need is based on ACHD's Pavement Management Engineer's evaluation of the StreetSaver Model's Pavement Condition Index (PCI) data. This data is updated annually for Ada County arterials, collectors and residential streets. Funding also includes House Bill 312 maintenance funding.



\$27M-\$34M

ANNUAL PAVEMENT
MANAGEMENT TARGET
+ 1% Annual System Growth Factor

FUNDING PROGRAM	2024	2025	2026	2027	2028
Operational Maintenance (ACHD Forces)	\$9.67M	\$9.73M	\$9.82M	\$9.92M	\$10.02M
Federal Aid Capital Improvements	\$9.59M	\$9.61	\$9.61M	\$8.07M	\$8.07M
Local Capital Maintenance	\$10.88M	\$9.01M	\$9.51M	\$9.82M	\$7.18M
Total	\$30.14M	\$28.35M	\$28.94M	\$27.81M	\$25.27M

Additional Capital Improvement and Safety Projects



Outside of the STBG-TMA program, there are several competitive funding programs that are administrated by FHWA, FTA, FEMA, ITD, LHTAC. And COMPASS. Each of these programs has its own set of restrictions and funding limitations. For example, programs such as STBG-Urban funds may be used for capital improvements projects within the cities of Kuna or Star, and STBG-Rural funds may be used in Ada County outside of the TMA and Urban boundaries. COMPASS is administering the Carbon Reduction Program, which can be used for pedestrian, bike, and transit facilities.

The following is a list of additional Primary Focus projects that staff will seek outside funding:

Additional Capital Improvement and Safety Projects (Continued)

Project Name	Project Description	Cost	Local Match	Possible Funding
Fairview Ave Bridges #2196 & #2197	Reconstruct the existing deficient bridges over the Boise River	\$8.4M	\$0.6M to \$3.4M	RAISE, Federal Bridge Program and INFRA Grant
Eckert Rd Bridge #2147 & #2148	Reconstruct the existing deficient bridges over the Boise River and Ridenbaugh Canal	\$5.0M	\$0.37M to \$1.0M	RAISE, Federal Bridge Program and INFRA Grant
Replace Bridges That Create Flood Hazards	Reconstruct obsolete bridge with design that eliminates 100-year flooding hazard created by existing bridge	\$0.5M to \$2.0M	\$0.12M to \$0.5M	FEMA, Building Resilient Infrastructure and Communities (BRIC)
Five Mile Rd, Overland Rd / Franklin Rd	Working with ITD, reconstruct the existing bridge over Interstate 84 and widen adjacent legs of Five Mile Rd to five lanes	\$22.5M	\$4.5M, less ITD's portion for overpass construction	RAISE Grant, Carbon Reduction Program, Reconnecting Communities, INFRA
NEPA Study	NEPA study for a future bridge or road improvement project. May be in coordination with an ACHD partner.	\$0.25M to \$2M	\$50K to \$0.4M or half of match	RAISE Grant, Reconnecting Communities Grant
ACHD Urban Improvement Project	Construct a Single-Lane Roundabout on Floating Feather Rd, in the City of Star	\$1.0M to \$1.5M	\$70K to \$0.1M	STBG-Urban
ACHD Rural Improvement Project	Reconstruct two lane, four-mile-long segment of Poen Road, from Swan Falls Road to Cloverdale Road, which was not built to modern standards Estimated cost is \$6,300,000	\$1.0M	\$74K to \$148K match	STBG-Rural or State Program like Local Strategic Initiatives Grant

Additional Capital Improvement and Safety Projects (Continued)

Project Name	Project Description	Cost	Local Match	Possible Funding
ACHD Rural Improvement Project	Improve safety and freight movement along Kuna-Mora Rd by adding paved shoulders on turns of three-mile segment, just west of I-84 interchange.	\$1,000,000	\$74K to \$148K match	STBG-Rural or State Program like Local Strategic Initiatives Grant
ACHD Rail Safety Project	Apply through ITD for funding to eliminate hazards and improve rail crossing safety on ACHD's network	\$0.2M to \$0.5M	No required match	Federal Railway-Highway Crossings Program
ACHD Rail grade Crossing Elimination Project	Apply through Federal Railroad Administration for funding to eliminate a railroad crossing by building a grade separated crossing	\$1M to \$50M	\$74K to \$3.7M	Federal Railroad Crossing Elimination Program
ACHD Transportation Improvement Project	Apply for State funding to offset cost of scheduled roadway improvement project	Grants up to \$10M each	No required match	State Program like Local Transportation Improvements Grant



Bicycle And Pedestrian Safety Improvements

Arterial roadways, with their higher traffic volumes require added consideration to safely accommodate bikes and pedestrians. These Primary Focus projects will install as appropriate, low-stress bike route alternatives, enhanced pedestrian crossings on arterial roadways, and fill sidewalk gaps. Enhanced crossings include Accessible Pedestrian Signals (APS), leading pedestrian interval (LPI). Pedestrian Hybrid Beacon (PHB) and Rectangular Rapid Flashing Beacon (RRFB).

Project Name	Project Description	Cost	Local Match	Possible Funding
50 th St and Alworth St in Garden City	Install RRFB	\$310K	\$23K	Transportation Alternatives (TA), Carbon Reduction Program (CRP), Local Highway Safety Improvement Program (LHSIP)
Beacon St and Grant Ave in Boise	Install PHB	\$575K	\$43K	TA, CRP, LHSIP
Hill Rd and Edgewood Ln in Eagle	Install PHB	\$500K	\$37K	TA, CRP, LHSIP
Linder Rd and Ardell Rd in Kuna	Install PHB	\$310K	\$23K	TA, CRP, LHSIP
ACHD Leading Pedestrian Interval Project (Various locations)	Add LPI to existing pedestrian signal	\$5K to \$250K	\$400 to \$19K	TA, CRP, LHSIP
Replace Non-compliant Curb Ramps at Joint ACHD-ITD Intersections	Bring non-compliant curb cuts up to ADA standards where ACHD sidewalks intersect ITD routes	\$60K	\$0	Idaho Americans with Disabilities Act Curb Ramp Program

Proactively Addressing Environmental Regulations

In response to existing and anticipated air quality and stormwater requirements, staff will seek grant funding that enables the District to implement innovative projects and training that prepares the District for broader regulatory requirements. Projects and training would focus on implementing stormwater projects that respond to lower Boise River Total Maximum Daily Load (TMDL) and NPDES permit requirements. In addition, look for opportunities to improve ACHD operations with proven green technologies.

The following is a list of additional Primary Focus projects that staff will seek outside funding:

Project Name	Project Description	Cost	Local Match	Possible Funding
GSI Technical Assistance Grant	Technical assistance to develop a GSI Maintenance and Operations plan for the operation and maintenance of ACHD's green infrastructure	\$50K	As required	EPA's Technical Assistance Services for Communities program
GSI Infrastructure Projects	Fund Phase 1 – Upland Strategies Capital Project. Reroute runoff from 13.4-acre subarea (SSDS-124215) to the State Street drainage system.	\$96,000	\$20,000 to \$48,000	EPA and other Federal Sources
GSI Infrastructure Projects	Fund Phase 2 of storm water infiltration Basin #1009 Retrofit. Removal and replacement of basin outlet structure and regrading of bottom of basin to correct for high groundwater.	\$194,000	\$39,000 to \$97,000	EPA and other Federal Sources

Proactively Addressing Environmental Regulations (Continued)

Project Name	Project Description	Cost	Local Match	Possible Funding
Zero-Emission Clean Heavy-Duty Vehicles	Replace eligible class 6 or 7 heavy-duty vehicles with a zero-emission vehicle.	\$150,000 to \$400,000	20% to 0% match	EPA funding
Zero-Emission Clean Heavy-Duty Vehicle Support	Purchase and install infrastructure needed to charge, fuel or maintain zero-emission vehicles	\$75K	20% to 0% match	EPA funding

Secondary Focus Projects



The Strategic Plan identifies Secondary Focus project as road enhancements that improve capacity and provide congestion management and relief. Secondary Focus projects also include cooperative projects with ITD, cities and businesses that support economic growth and job creation.

The following is a list of Secondary Focus projects that staff will seek outside funding:

Project Name	Project Description	Cost	Local Match	Possible Funding
ACHD-ITD Joint Intersections	Partner with ITD to improve the ACHD portion of intersections with State Highway projects	\$0.5M to \$10M	\$19K to \$2M	RAISE, STBG-TMA and INFRA grants

Secondary Focus Projects (Continued)

Project Name	Project Description	Cost	Local Match	Possible Funding
Maintaining Power in an Emergency	Purchase necessary stand-by power systems for Adams Street, Cloverdale Road, Franklin Road and Ustick Road facilities	\$235K	\$59K	Homeland Security Grant (HSGP), State Homeland Security (SHSP), Urban Areas Security Initiative (UASIP) and Emergency Management Performance Grants (EMPG)
Sidewalk Gaps	Fill sidewalk gaps in existing ACHD system	\$150K	\$11K	Transportation Alternatives Program (TAP), Carbon Reduction Program (CRP) TAP, CRP
Implement Regional Low-Stress Bike Routes	Seek funding to implement Bike Master Plan projects	\$25K to \$0.5M	\$0 to \$37K	
New Bike and Pedestrian Facility Evaluation	Conduct study to evaluate the effectiveness of bike and pedestrian plans to integrate new facilities into the existing system	\$25,000	As required	COMPASS Planning Grant



Secondary Focus Projects (Continued)

Project Name	Project Description	Cost	Local Match	Possible Funding
Conduit and Fiber for CCTV and Signal Interconnect	Install conduit and fiber along Ada County roadways to interconnect signals and install CCTV cameras if needed	\$300,000	\$22,000	FHWA Program
Arterial Dynamic Message Signs	Install four (4) arterial Dynamic Message Signs on major arterials at critical intersections	\$300,000	\$22,000	FHWA Program
Purchase 13-Passenger Vans and Minivans	For Commuteride fleet, purchase thirteen-seat vans and minivans to replace vehicles according to vehicle replacement schedule	Varies per year	7.34% to 20% match	FTA 5307 Urbanized Area Formula, FTA 5339 Small Urban or Rural
Park and Ride Site Development	Develop and construct park and ride site in Ada County to support Commuteride program. Site locations will be based on FY2021 COMPASS Park & Ride Study.	\$1,000,000	\$74,000 to \$200,000	FTA or STBG-TMA
Relocate surplus Black Cat Road Bridge	Repurpose historic Black Cat Road bridge for bike/ped function within Ada County	\$80,000	\$6,000	COMPASS CIM GRANT, TA, CRP

