

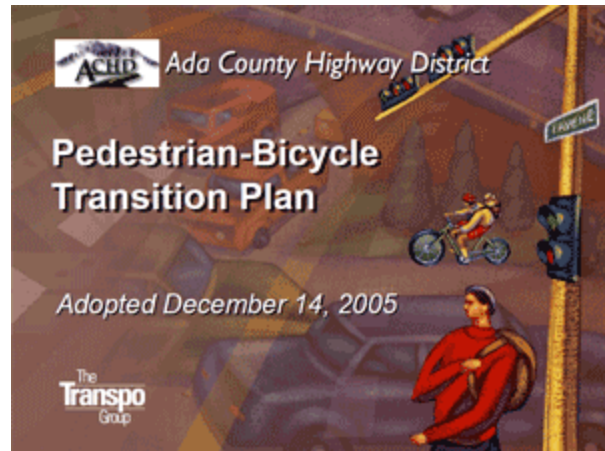
# Fiscal Year 2009 ADA Annual Report

## Ada County Highway District Sidewalk and Curb Ramp Improvements

---

### Background

On December 14, 2005 the Ada County Highway District (ACHD) Commission adopted the Pedestrian Bicycle Transition Plan (PBTP). The Pedestrian-Bicycle Transition Plan (PBTP) is intended to provide a comprehensive plan to enhance the Ada County urban area pedestrian and bicycle system. This effort was initiated by ACHD, with a primary emphasis on addressing federal pedestrian planning guidelines and the regulatory requirements of the Americans with Disabilities Act (ADA).



ACHD has jurisdiction and responsibility for all public roads and streets within Ada County, Idaho, except state highways and interstate freeways. By state statute, pedestrian (typically sidewalks) and bicycle system components of most public streets also fall under ACHD's jurisdiction.

The Americans with Disabilities Act (ADA), enacted on July 26, 1990, provides comprehensive civil rights protections to persons with disabilities in the areas of employment, state and local government services, access to public accommodations, transportation, telecommunications and pedestrian facilities.

There are five titles or parts to the ADA; Title II is of most concern to ACHD. ACHD's PBTP is intended to address the most recent ADA policies and rules. Title II of the ADA prohibits state and local governments from discriminating against persons with disabilities by requiring them to make all programs, services, and activities accessible to persons with disabilities. Title II requires that a public entity must evaluate its services, programs, policies, and practices to determine whether they are in compliance with the nondiscrimination requirements of the ADA.

The ADA requires that a Transition Plan be prepared, to describe any structural or physical changes required to make programs accessible. The Transition Plan outlines the methods by which physical or structural changes will be made to effect the nondiscrimination policies described in Title II. Commensurate with the ADA requirements for inventory and self-evaluation, ACHD targeted a significant portion of the overall planning effort to complete a walking inventory of the entire, street-side pedestrian system within the Ada County urban areas.

More than 2,800 miles of existing and missing sidewalks and 19,300 street corners (with 15,500 curb ramps) were inventoried and assessed as part of ACHD's Self-Evaluation. Documenting the location, type and condition of sidewalks and curb ramps is an important step in the pedestrian planning effort. A

full inventory of missing sidewalks helps identify the critical “gaps” to fill. ACHD has successfully completed a thorough inventory of the pedestrian system as the basis of the PBTP planning effort. Prior to the PBTP effort, no such inventory existed.

In addition to establishing the baseline data set, ACHD has established standard operating procedures to ensure that the GIS data base for sidewalk and curb ramps remains current as new facilities are installed and substandard facilities are repaired.

## Purpose

Since the adoption of the PBTP, ACHD has worked diligently to plan for and construct improvements to the pedestrian system that bring the sidewalks and curb ramps in Ada County into compliance with ADA. The purpose of this annual report is to describe the improvements to the pedestrian system that occurred in fiscal year 2009. Each fiscal year new improvements are cataloged and added to the overall pedestrian facility database that was created in 2005.

## New Facilities

ACHD is constantly expanding the length of sidewalks and number of curb ramps in the county and its six cities. The new sidewalks and curb ramps are primarily constructed through one of the following programs or activities:

- Large scale ACHD “Capital Projects” such as roadway expansion, and overlays;
- Smaller scale ACHD “Community Programs Projects” such as sidewalk construction, safe routes to school projects, and curb ramps;
- Residential and commercial subdivisions;
- Miscellaneous commercial and residential building permits (not captured in the FY 2009 inventory due to data constraints),



ACHD expends significant amounts of federal and local funds to construct new improvements to the pedestrian system. In addition to sidewalks and curb ramps that are constructed with ACHD Capital Projects (i.e. roadway widening and overlays), the ACHD Commission has dedicated five percent of ACHD’s capital budget to pedestrian specific projects (not associated with a specific roadway project). In 2009 the voters of Ada County approved an increase in vehicle registration fees to fund pedestrian projects near schools. These efforts by ACHD go above and beyond the Federal Highway Administration (FHWA)’s Safe Routes to School Program, which makes federal funding available through grants. ACHD applies for federal grants, but has historically been a leader in locally funded safe routes to school improvements.

Private development through subdivisions and new construction funds and constructs large portions of the new pedestrian network. ACHD works closely with developers to ensure that the pedestrian facilities constructed with private funds are ADA compliant. ACHD inspector’s visually inspect and sign off on all improvements in the public right-of-prior to official acceptance of the improvements.

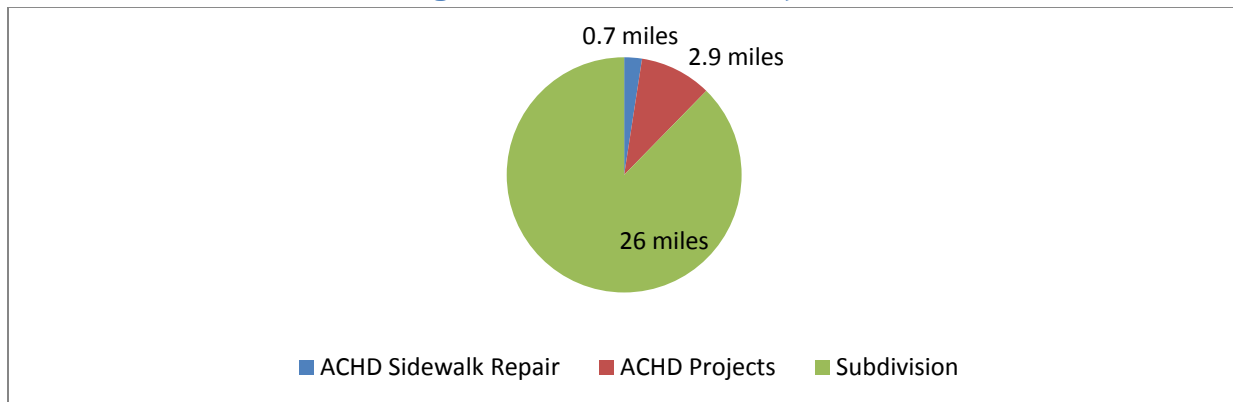
## Repaired Facilities

ACHD also has a Sidewalk Repair Program that focuses on repairing or reconstructing substandard sidewalks and curb ramps. Historically the sidewalk repair program has focused on repairing sidewalk and curb ramps based on citizen concerns/requests. In coming years ACHD anticipates a more programmatic approach to repairing and replacing substandard pedestrian facilities.

## Fiscal Year 2009 Achievements

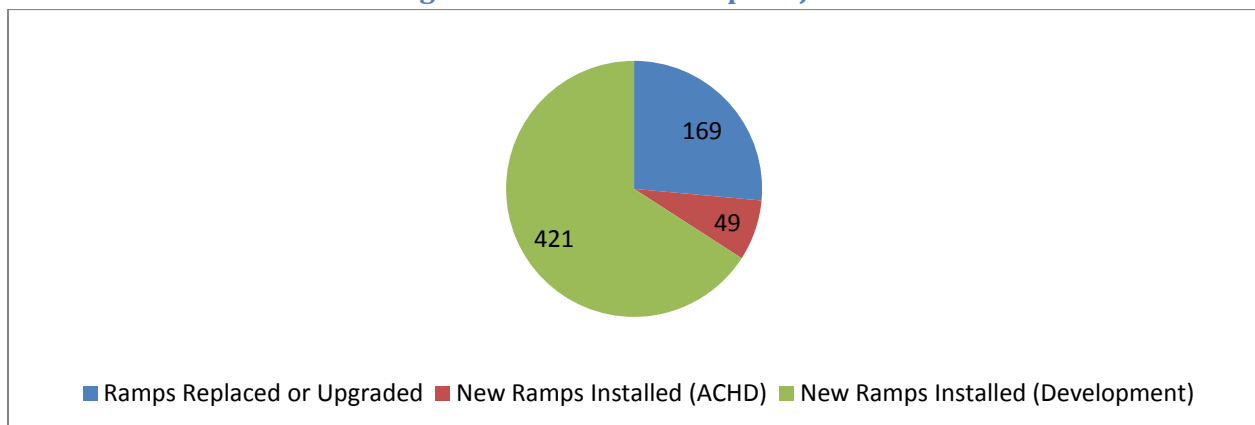
In fiscal year 2009 ACHD and private development installed nearly 29 miles of new sidewalks in Ada County. In addition to the new sidewalks, ACHD repaired .7 miles of substandard sidewalks. Figure 1 below illustrates the total mileage of new and repaired sidewalk for fiscal year 2009. The total estimated investment in new and repaired sidewalks projects for fiscal year 2009 is close to \$3,600,000 dollars (further project details and cost estimates are described in Appendix A and map of project locations is shown in Appendix B).

**Figure 1. 2009 Sidewalk Projects**



During same time period ACHD and private development installed 470 new pedestrian ramps across Ada County. ACHD through its maintenance activities and sidewalk repair program replaced or upgraded an additional 169 pedestrian ramps to bring them into compliance with current ADA standards. The total estimated investment in new and repaired/replaced curb ramps for fiscal year 2009 is close to \$642,834 dollars (further project details are described in Appendix A and B).

**Figure 2. 2009 Curb Ramp Projects**



## Appendix A

### Fiscal Year 2009 Sidewalk Repair Projects

DATE	WIDTH	PROJECT NUMBER	PROJECT ORIGIN	PROJECT NAME	STREET NAME	LENGTH (FT)	ESTIMATED COST <sup>1</sup>
FY 2009	6	MD39-WO2	ACHD MISC CONCRETE	On Call Concrete Repairs	15TH ST. N.	13	\$299.00
FY 2009	5	MD31-WO4	ACHD MISC CONCRETE	On Call Concrete Repairs	WATERWHEEL DR.	54	\$1,242.00
FY 2009	6	MD39-WO6	ACHD MISC CONCRETE	On Call Concrete Repairs	ELLIS AVE.	41	\$943.00
FY 2009	6	MD39-WO6	ACHD MISC CONCRETE	On Call Concrete Repairs	20TH ST. N.	163	\$3,749.00
FY 2009	6	MD39-WO5	ACHD MISC CONCRETE	On Call Concrete Repairs	EASTMAN ST.	122	\$2,806.00
FY 2009	6	MD39-WO5	ACHD MISC CONCRETE	On Call Concrete Repairs	12TH ST. N.	49	\$1,127.00
FY 2009	6	MD39-WO5	ACHD MISC CONCRETE	On Call Concrete Repairs	EASTMAN ST.	49	\$1,127.00
FY 2009	6	MD39-WO5	ACHD MISC CONCRETE	On Call Concrete Repairs	12TH ST. N.	25	\$575.00
FY 2009	6	MD39-WO4	ACHD MISC CONCRETE	On Call Concrete Repairs	IDAHO ST.	34	\$782.00
FY 2009	6	MD39-WO4	ACHD MISC CONCRETE	On Call Concrete Repairs	IDAHO ST.	13	\$299.00
FY 2009	6	MD39-WO3	ACHD MISC CONCRETE	On Call Concrete Repairs	JEFFERSON ST.	80	\$1,840.00
FY 2009	6	MD39-WO3	ACHD MISC CONCRETE	On Call Concrete Repairs	25TH ST. N.	125	\$2,875.00
FY 2009	6	MD39-WO4	ACHD MISC CONCRETE	On Call Concrete Repairs	22ND ST. N.	147	\$3,381.00
FY 2009	6	MD39-WO6	ACHD MISC CONCRETE	On Call Concrete Repairs	17TH ST. N.	22	\$506.00
FY 2009	6	MD39-WO3	ACHD MISC CONCRETE	On Call Concrete Repairs	PLEASANTON ST.	33	\$759.00
FY 2009	6	MD39-WO6	ACHD MISC CONCRETE	On Call Concrete Repairs	22ND ST. N.	51	\$1,173.00
FY 2009	6	MD39-WO3	ACHD MISC CONCRETE	On Call Concrete Repairs	23RD ST. N.	36	\$828.00
FY 2009	6	MD39-WO3	ACHD MISC CONCRETE	On Call Concrete Repairs	PLEASANTON ST.	83	\$1,909.00
FY 2009	6	MD39-WO7	ACHD MISC CONCRETE	On Call Concrete Repairs	09TH ST. N.	31	\$713.00
FY 2009	4	MD39-WO6	ACHD MISC CONCRETE	On Call Concrete Repairs	EASTMAN ST.	4	\$92.00
FY 2009	6	MD39-WO3	ACHD MISC CONCRETE	On Call Concrete Repairs	19TH ST. N.	21	\$483.00

<sup>1</sup> Cost estimate based on ACHD average cost of \$23 per lineal foot for new sidewalk constructed during FY 2009. This cost includes excavation and base material.

FY 2009	6	MD39-WO3	ACHD MISC CONCRETE	On Call Concrete Repairs	JEFFERSON ST.	28	\$644.00
FY 2009	6	MD39-WO7	ACHD MISC CONCRETE	On Call Concrete Repairs	THATCHER ST.	129	\$2,967.00
FY 2009	6	MD39-WO6	ACHD MISC CONCRETE	On Call Concrete Repairs	HAYS ST.	25	\$575.00
FY 2009	4	MD39-WO3	ACHD MISC CONCRETE	On Call Concrete Repairs	PLEASANTON ST.	13	\$299.00
FY 2009	5	MD39-WO3	ACHD MISC CONCRETE	On Call Concrete Repairs	28TH ST. N.	6	\$138.00
FY 2009	6	MD39-WO7	ACHD MISC CONCRETE	On Call Concrete Repairs	05TH ST. N.	76	\$1,748.00
FY 2009	6	MD39-WO6	ACHD MISC CONCRETE	On Call Concrete Repairs	18TH ST. N.	82	\$1,886.00
FY 2009	6	MD39-WO6	ACHD MISC CONCRETE	On Call Concrete Repairs	BELLA ST.	13	\$299.00
FY 2009	6	MD39-WO6	ACHD MISC CONCRETE	On Call Concrete Repairs	22ND ST. N.	11	\$253.00
FY 2009	6	MD39-WO7	ACHD MISC CONCRETE	On Call Concrete Repairs	10TH ST. N.	35	\$805.00
FY 2009	6	MD39-WO6	ACHD MISC CONCRETE	On Call Concrete Repairs	HAYS ST.	31	\$713.00
FY 2009	4	MD38-WO2	ACHD MISC CONCRETE	On Call Concrete Repairs	RANCH DR W.	7	\$161.00
FY 2009	4	MD38-WO2	ACHD MISC CONCRETE	On Call Concrete Repairs	RANCH DR W.	20	\$460.00
FY 2009	4	MD38-WO2	ACHD MISC CONCRETE	On Call Concrete Repairs	RANCH DR W.	17	\$391.00
FY 2009	4	MD38-WO2	ACHD MISC CONCRETE	On Call Concrete Repairs	RANCH DR W.	10	\$230.00
FY 2009	6	MD39-WO2	ACHD MISC CONCRETE	On Call Concrete Repairs	15TH ST. N.	39	\$897.00
FY 2009	4	MD38-WO2	ACHD MISC CONCRETE	On Call Concrete Repairs	RANCH DR W.	87	\$2,001.00
FY 2009	4	MD38-WO2	ACHD MISC CONCRETE	On Call Concrete Repairs	RANCH DR W.	14	\$322.00
FY 2009	4	MD38-WO2	ACHD MISC CONCRETE	On Call Concrete Repairs	RANCH DR W.	30	\$690.00
FY 2009	5	MD39-WO2	ACHD MISC CONCRETE	On Call Concrete Repairs	14TH ST. N.	6	\$138.00
FY 2009	4	MD38-WO2	ACHD MISC CONCRETE	On Call Concrete Repairs	RANCH DR W.	179	\$4,117.00
FY 2009	4	MD38-WO2	ACHD MISC CONCRETE	On Call Concrete Repairs	EVERGREEN ST.	61	\$1,403.00
FY 2009	6	MD39-WO2	ACHD MISC CONCRETE	On Call Concrete Repairs	ADA ST.	124	\$2,852.00
FY 2009	4	MD38-WO1	ACHD MISC CONCRETE	On Call Concrete Repairs	LINDA VISTA LN.	37	\$851.00
FY 2009	4	MD38-WO2	ACHD MISC CONCRETE	On Call Concrete Repairs	RANCH DR W.	28	\$644.00
FY 2009	4	MD38-WO2	ACHD MISC CONCRETE	On Call Concrete Repairs	RANCH DR W.	40	\$920.00
FY 2009	6	MD39-WO2	ACHD MISC CONCRETE	On Call Concrete Repairs	13TH ST. N.	48	\$1,104.00
FY 2009	4	MD38-WO2	ACHD MISC CONCRETE	On Call Concrete Repairs	MANGO DR.	36	\$828.00
FY 2009	4	MD38-WO2	ACHD MISC CONCRETE	On Call Concrete Repairs	FARRINGTON DR.	9	\$207.00
FY 2009	6	MD39-WO3	ACHD MISC CONCRETE	On Call Concrete Repairs	22ND ST. N.	95	\$2,185.00

FY 2009	4	MD38-WO2	ACHD MISC CONCRETE	On Call Concrete Repairs	NORTHVIEW DR.	91	\$2,093.00
FY 2009	4	MD38-WO1	ACHD MISC CONCRETE	On Call Concrete Repairs	LINDA VISTA LN.	10	\$230.00
FY 2009	4	MD38-WO1	ACHD MISC CONCRETE	On Call Concrete Repairs	LINDA VISTA LN.	50	\$1,150.00
FY 2009	4	MD38-WO1	ACHD MISC CONCRETE	On Call Concrete Repairs	LINDA VISTA LN.	30	\$690.00
FY 2009	4	MD38-WO1	ACHD MISC CONCRETE	On Call Concrete Repairs	SECRETARIAT ST.	46	\$1,058.00
FY 2009	4	MD38-WO1	ACHD MISC CONCRETE	On Call Concrete Repairs	LINDA VISTA LN.	30	\$690.00
FY 2009	4	MD38-WO1	ACHD MISC CONCRETE	On Call Concrete Repairs	LINDA VISTA LN.	15	\$345.00
FY 2009	4	MD38-WO1	ACHD MISC CONCRETE	On Call Concrete Repairs	WESLEY DR.	36	\$828.00
FY 2009	4	MD38-WO1	ACHD MISC CONCRETE	On Call Concrete Repairs	MUSKET ST.	20	\$460.00
FY 2009	4	MD38-WO1	ACHD MISC CONCRETE	On Call Concrete Repairs	KAMPTON DR.	31	\$713.00
FY 2009	5	MD31-W10	ACHD MISC CONCRETE	On Call Concrete Repairs	ARBORVITAE CT E.	6	\$138.00
FY 2009	4	MD31-WO5	ACHD MISC CONCRETE	On Call Concrete Repairs	DORIAN ST.	26	\$598.00
FY 2009	4	MD31-WO5	ACHD MISC CONCRETE	On Call Concrete Repairs	KIRKWOOD DR.	4	\$92.00
FY 2009	4	MD38-WO2	ACHD MISC CONCRETE	On Call Concrete Repairs	BEACHWOOD ST.	18	\$414.00
FY 2009	4	MD31-WO5	ACHD MISC CONCRETE	On Call Concrete Repairs	KIRKWOOD DR.	26	\$598.00
FY 2009	4	MD31-WO5	ACHD MISC CONCRETE	On Call Concrete Repairs	KIRKWOOD DR.	36	\$828.00
FY 2009	4	MD31-WO5	ACHD MISC CONCRETE	On Call Concrete Repairs	KIRKWOOD DR.	10	\$230.00
FY 2009	6	MD39-WO2	ACHD MISC CONCRETE	On Call Concrete Repairs	15TH ST. N.	18	\$414.00
FY 2009	4	MD38-WO2	ACHD MISC CONCRETE	On Call Concrete Repairs	BEACHWOOD ST.	77	\$1,771.00
FY 2009	4	MD31-WO5	ACHD MISC CONCRETE	On Call Concrete Repairs	KIRKWOOD DR.	10	\$230.00
FY 2009	4	MD31-WO5	ACHD MISC CONCRETE	On Call Concrete Repairs	KIRKWOOD DR.	47	\$1,081.00
FY 2009	6	MD39-WO2	ACHD MISC CONCRETE	On Call Concrete Repairs	14TH ST. N.	79	\$1,817.00
FY 2009	4	MD31-WO5	ACHD MISC CONCRETE	On Call Concrete Repairs	KIRKWOOD DR.	4	\$92.00
FY 2009	4	MD31-WO5	ACHD MISC CONCRETE	On Call Concrete Repairs	KIRKWOOD DR.	70	\$1,610.00
FY 2009	4	MD31-WO5	ACHD MISC CONCRETE	On Call Concrete Repairs	KIRKWOOD CT.	24	\$552.00
FY 2009	6	MD39-WO2	ACHD MISC CONCRETE	On Call Concrete Repairs	13TH ST. N.	24	\$552.00
FY 2009	4	MD31-WO5	ACHD MISC CONCRETE	On Call Concrete Repairs	KIRKWOOD CT.	46	\$1,058.00
FY 2009	4	MD31-WO5	ACHD MISC CONCRETE	On Call Concrete Repairs	KIRKWOOD CT.	14	\$322.00
FY 2009	6	MD39-WO3	ACHD MISC CONCRETE	On Call Concrete Repairs	19TH ST. N.	36	\$828.00
FY 2009	4	MD31-WO5	ACHD MISC CONCRETE	On Call Concrete Repairs	KIRKWOOD DR.	69	\$1,587.00

FY 2009	4	MD31-WO5	ACHD MISC CONCRETE	On Call Concrete Repairs	KIRKWOOD DR.	10	\$230.00
FY 2009	6	MD39-WO3	ACHD MISC CONCRETE	On Call Concrete Repairs	PLEASANTON ST.	39	\$897.00
FY 2009	4	MD31-WO5	ACHD MISC CONCRETE	On Call Concrete Repairs	DORIAN ST.	18	\$414.00
FY 2009	4	MD31-WO5	ACHD MISC CONCRETE	On Call Concrete Repairs	DORIAN ST.	14	\$322.00
FY 2009	4	MD31-WO5	ACHD MISC CONCRETE	On Call Concrete Repairs	DORIAN ST.	8	\$184.00
FY 2009	4	MD31-WO5	ACHD MISC CONCRETE	On Call Concrete Repairs	RAYMOND ST.	101	\$2,323.00
FY 2009	4	MD31-WO5	ACHD MISC CONCRETE	On Call Concrete Repairs	RAYMOND ST.	60	\$1,380.00
FY 2009	5	MD31-WO4	ACHD MISC CONCRETE	On Call Concrete Repairs	TREDWELL PL.	14	\$322.00
FY 2009	6	MD39-WO7	ACHD MISC CONCRETE	On Call Concrete Repairs	WASHINGTON ST.	12	\$276.00
FY 2009	4	MD38-WO2	ACHD MISC CONCRETE	On Call Concrete Repairs	RANCH DR W.	5	\$115.00
							<b>\$87,768.00</b>

### Fiscal Year 2009 ACHD Roadway Projects - Sidewalk

DATE	WIDTH	Project Number	PROJECT ORIGIN	PROJECT NAME	STREET NAME	LENGTH	ESTIMATED COST
FY 2009	4	807003-009	ACHD PROJECT	LEWIS ST (SW CORNER WALNUT & LEWIS)	LEWIS ST.	200	\$4,600.00
FY 2009	4	607003-011	ACHD PROJECT	LEADVILLE AVE (BOISE - WILLIAMS)	LEADVILLE AVE.	357	\$8,211.00
FY 2009	5	806026-001	ACHD PROJECT	LINDER RD (2ND - KENTER)	LINDER RD.	1377	\$31,671.00
FY 2009	5	807003-003	ACHD PROJECT	32ND ST (GRACE - DEWEY)	32ND ST. N.	283	\$6,509.00
FY 2009	7	305048	ACHD PROJECT	USTICK & LINDER INTERSECTION	LINDER RD.	911	\$20,953.00
FY 2009	5	305048	ACHD PROJECT	USTICK & LINDER INTERSECTION	LINDER RD.	40	\$920.00
FY 2009	5	305048	ACHD PROJECT	USTICK & LINDER INTERSECTION	LINDER RD.	30	\$690.00
FY 2009	5	305048	ACHD PROJECT	USTICK & LINDER INTERSECTION	USTICK RD.	67	\$1,541.00
FY 2009	5	305048	ACHD PROJECT	USTICK & LINDER INTERSECTION	USTICK RD.	502	\$11,546.00
FY 2009	5	305048	ACHD PROJECT	USTICK & LINDER INTERSECTION	USTICK RD.	439	\$10,097.00
FY 2009	5	305048	ACHD PROJECT	USTICK & LINDER INTERSECTION	LINDER RD.	376	\$8,648.00
FY 2009	5	305048	ACHD PROJECT	USTICK & LINDER INTERSECTION	LINDER RD.	571	\$13,133.00
FY 2009	5	806026-001	ACHD PROJECT	LINDER RD (2ND - KENTER)	LINDER RD.	470	\$10,810.00
FY 2009	5	806026-003	ACHD PROJECT	4th ST (SCHOOL-LINDER PED)	04TH ST. W.	2641	\$60,743.00

FY 2009	7	506040	ACHD PROJECT	MERIDIAN AND MAIN SPLIT CORRIDOR-PHASE 1	MAIN ST S.	323	\$7,429.00
FY 2009	10	506040	ACHD PROJECT	MERIDIAN AND MAIN SPLIT CORRIDOR-PHASE 1	MAIN ST S.	1269	\$29,187.00
FY 2009	7	506040	ACHD PROJECT	MERIDIAN AND MAIN SPLIT CORRIDOR-PHASE 1	MERIDIAN RD	354	\$8,142.00
FY 2009	7	506040	ACHD PROJECT	MERIDIAN AND MAIN SPLIT CORRIDOR-PHASE 1	WALTMAN LN.	492	\$11,316.00
FY 2009	10	506040	ACHD PROJECT	MERIDIAN AND MAIN SPLIT CORRIDOR-PHASE 1	MAIN ST S.	1357	\$31,211.00
FY 2009	7	506040	ACHD PROJECT	MERIDIAN AND MAIN SPLIT CORRIDOR-PHASE 1	FRANKLIN RD.	477	\$10,971.00
FY 2009	7	60079/MA203-02	ACHD PROJECT	EAST PARKCENTER BRIDGE	PARKCENTER BLVD	390	\$8,970.00
FY 2009	7	60079/MA203-02	ACHD PROJECT	EAST PARKCENTER BRIDGE	PARKCENTER BLVD	1463	\$33,649.00
FY 2009	8	60079/MA203-02	ACHD PROJECT	EAST PARKCENTER BRIDGE	PARKCENTER BLVD	615	\$14,145.00
FY 2009	7	60079/MA203-02	ACHD PROJECT	EAST PARKCENTER BRIDGE	PARKCENTER BLVD	460	\$10,580.00
							<b>\$355,672.00</b>

### Fiscal Year 2009 Subdivision - Sidewalks

DATE	WIDTH	Project Number	PROJECT ORIGIN	PROJECT NAME	STREET NAME	LENGTH	ESTIMATED COST
FY 2009	5	108027765	SUBDIVISION	VIZCAYA	E BEACON LIGHT RD	90	\$2,070.00
FY 2009	5	107146438	SUBDIVISION	PARAMOUNT NO 15	E PRODUCER DR	2	\$46.00
FY 2009	5	106030313	SUBDIVISION	SADDLEBROOK PHASE 03	W GAMBRELL ST	152	\$3,496.00
FY 2009	5	106030313	SUBDIVISION	SADDLEBROOK PHASE 03	W GAMBRELL ST	310	\$7,130.00
FY 2009	5	106030313	SUBDIVISION	SADDLEBROOK PHASE 03	W GAMBRELL ST	197	\$4,531.00
FY 2009	5	106030313	SUBDIVISION	SADDLEBROOK PHASE 03	N MAYBELLE PL	258	\$5,934.00
FY 2009	5	106030313	SUBDIVISION	SADDLEBROOK PHASE 03	N NIGHTINGALE PL	294	\$6,762.00
FY 2009	5	106030313	SUBDIVISION	SADDLEBROOK PHASE 03	N DEERHAVEN WAY	135	\$3,105.00
FY 2009	5	106036665	SUBDIVISION	SADDLEBROOK PHASE 04	N PADDINGTON PL	502	\$11,546.00
FY 2009	5	106036665	SUBDIVISION	SADDLEBROOK PHASE 04	N PRINGLEWOOD PL	461	\$10,603.00
FY 2009	5	106036665	SUBDIVISION	SADDLEBROOK PHASE 04	N QUINCANNON WAY	133	\$3,059.00
FY 2009	5	106030313	SUBDIVISION	SADDLEBROOK PHASE 03	W GAMBRELL ST	47	\$1,081.00
FY 2009	5	106036665	SUBDIVISION	SADDLEBROOK PHASE 04	W GAMBRELL ST	137	\$3,151.00
FY 2009	5	106036665	SUBDIVISION	SADDLEBROOK PHASE 04	W GAMBRELL ST	272	\$6,256.00



FY 2009	5	106036665	SUBDIVISION	SADDLEBROOK PHASE 04	W GAMBRELL ST	295	\$6,785.00
FY 2009	5	106127829	SUBDIVISION	PONY HOLLOW	N BIG SKY PL	1049	\$24,127.00
FY 2009	5	106149968	SUBDIVISION	EYRIE CANYON NO 03	N ARROW VILLA WAY	74	\$1,702.00
FY 2009	5	106149968	SUBDIVISION	EYRIE CANYON NO 03	W WINTER CAMP DR	1195	\$27,485.00
FY 2009	5	106036665	SUBDIVISION	SADDLEBROOK PHASE 04	N QUINCANNON WAY	667	\$15,341.00
FY 2009	5	106030313	SUBDIVISION	SADDLEBROOK PHASE 03	N DEERHAVEN WAY	692	\$15,916.00
FY 2009	5	106030313	SUBDIVISION	SADDLEBROOK PHASE 03	W DARKWOOD DR	255	\$5,865.00
FY 2009	5	106030313	SUBDIVISION	SADDLEBROOK PHASE 03	N FINSBURY WAY	71	\$1,633.00
FY 2009	5	107081550	SUBDIVISION	PARKSTONE NO 02	W ACHILLEA ST	672	\$15,456.00
FY 2009	5	107081550	SUBDIVISION	PARKSTONE NO 02	S DEVON AVE	249	\$5,727.00
FY 2009	5	107081550	SUBDIVISION	PARKSTONE NO 02	W WILDBRANCH CT	158	\$3,634.00
FY 2009	5	107081550	SUBDIVISION	PARKSTONE NO 02	W WILDBRANCH DR	597	\$13,731.00
FY 2009	5	107081550	SUBDIVISION	PARKSTONE NO 02	S TRESA AVE	233	\$5,359.00
FY 2009	5	107081550	SUBDIVISION	PARKSTONE NO 02	W WILDBRANCH DR	313	\$7,199.00
FY 2009	5	107081550	SUBDIVISION	PARKSTONE NO 02	S PLUMMER WAY	387	\$8,901.00
FY 2009	5	107081550	SUBDIVISION	PARKSTONE NO 02	W HERCULES DR	71	\$1,633.00
FY 2009	5	107081550	SUBDIVISION	PARKSTONE NO 02	W GLOXINIA ST	740	\$17,020.00
FY 2009	5	107081550	SUBDIVISION	PARKSTONE NO 02	S HAVENSET AVE	69	\$1,587.00
FY 2009	5	107081550	SUBDIVISION	PARKSTONE NO 02	S SENECA SPRINGS WAY	726	\$16,698.00
FY 2009	5	106198237	SUBDIVISION	PARKSTONE NO 01	S SENECA SPRINGS WAY	46	\$1,058.00
FY 2009	5	107119408	SUBDIVISION	GRAMERCY NO 01	E GALA ST	668	\$15,364.00
FY 2009	5	107119408	SUBDIVISION	GRAMERCY NO 01	E GALA CT	331	\$7,613.00
FY 2009	5	107119408	SUBDIVISION	GRAMERCY NO 01	S WELLS AVE	869	\$19,987.00
FY 2009	5	107119408	SUBDIVISION	GRAMERCY NO 01	E BLUE HORIZON DR	622	\$14,306.00
FY 2009	5	107119408	SUBDIVISION	GRAMERCY NO 01	S WELLS AVE	285	\$6,555.00
FY 2009	5	107119408	SUBDIVISION	GRAMERCY NO 01	E GOLDSTONE ST	90	\$2,070.00
FY 2009	5	107119408	SUBDIVISION	GRAMERCY NO 01	E GOLDSTONE ST	414	\$9,522.00
FY 2009	5	107119408	SUBDIVISION	GRAMERCY NO 01	S ACCOLADE AVE	237	\$5,451.00
FY 2009	5	107119408	SUBDIVISION	GRAMERCY NO 01	S ACCOLADE AVE	395	\$9,085.00
FY 2009	5	107119408	SUBDIVISION	GRAMERCY NO 01	E BLUE TICK ST	517	\$11,891.00

FY 2009	5	107119408	SUBDIVISION	GRAMERCY NO 01	S ACCOLADE AVE	237	\$5,451.00
FY 2009	5	107119408	SUBDIVISION	GRAMERCY NO 01	E COPPER POINT ST	493	\$11,339.00
FY 2009	5	107125435	SUBDIVISION	BELLATERRA	W VENETIAN DR	662	\$15,226.00
FY 2009	5	107125435	SUBDIVISION	BELLATERRA	N MONTEROSSA WAY	61	\$1,403.00
FY 2009	5	107125435	SUBDIVISION	BELLATERRA	N MONTEROSSA WAY	305	\$7,015.00
FY 2009	5	107125435	SUBDIVISION	BELLATERRA	W MONTAGE CT	121	\$2,783.00
FY 2009	5	107125435	SUBDIVISION	BELLATERRA	W MONTAGE DR	527	\$12,121.00
FY 2009	5	107125435	SUBDIVISION	BELLATERRA	W VENETIAN DR	225	\$5,175.00
FY 2009	5	107125435	SUBDIVISION	BELLATERRA	N TUSCOLANO PL	45	\$1,035.00
FY 2009	5	107125435	SUBDIVISION	BELLATERRA	N LIVORNO WAY	532	\$12,236.00
FY 2009	5	107125435	SUBDIVISION	BELLATERRA	N TUSCOLANO PL	345	\$7,935.00
FY 2009	5	107125435	SUBDIVISION	BELLATERRA	W MODENA DR	407	\$9,361.00
FY 2009	5	107125435	SUBDIVISION	BELLATERRA	N BELLA STRADA WAY	84	\$1,932.00
FY 2009	5	107139656	SUBDIVISION	SKYLIGHT	W BRIGHT STAR ST	17	\$391.00
FY 2009	5	107139656	SUBDIVISION	SKYLIGHT	S LIGHT HORIZON WAY	230	\$5,290.00
FY 2009	5	107139656	SUBDIVISION	SKYLIGHT	S LIGHT HORIZON WAY	194	\$4,462.00
FY 2009	5	107139656	SUBDIVISION	SKYLIGHT	S LIGHT HORIZON WAY	123	\$2,829.00
FY 2009	5	107139656	SUBDIVISION	SKYLIGHT	W MORNING CT	95	\$2,185.00
FY 2009	5	107139656	SUBDIVISION	SKYLIGHT	W MORNING CT	379	\$8,717.00
FY 2009	5	107139656	SUBDIVISION	SKYLIGHT	W MORNING CT	249	\$5,727.00
FY 2009	5	107139656	SUBDIVISION	SKYLIGHT	W SKYLIGHT ST	272	\$6,256.00
FY 2009	5	107139656	SUBDIVISION	SKYLIGHT	W SKYLIGHT ST	110	\$2,530.00
FY 2009	5	107146438	SUBDIVISION	PARAMOUNT NO 15	W PRODUCER DR	287	\$6,601.00
FY 2009	5	107146438	SUBDIVISION	PARAMOUNT NO 15	W PRODUCER DR	268	\$6,164.00
FY 2009	5	107146438	SUBDIVISION	PARAMOUNT NO 15	W PRODUCER DR	295	\$6,785.00
FY 2009	5	107146438	SUBDIVISION	PARAMOUNT NO 15	W PRODUCER DR	145	\$3,335.00
FY 2009	5	107146438	SUBDIVISION	PARAMOUNT NO 15	W PRODUCER DR	125	\$2,875.00
FY 2009	5	107146438	SUBDIVISION	PARAMOUNT NO 15	W PRODUCER DR	228	\$5,244.00
FY 2009	5	107146424	SUBDIVISION	PARAMOUNT NO 14	W KINGSLEY ST	91	\$2,093.00
FY 2009	5	107146424	SUBDIVISION	PARAMOUNT NO 14	W KINGSLEY ST	355	\$8,165.00

FY 2009	5	107146424	SUBDIVISION	PARAMOUNT NO 14	N HOPKINS AVE	135	\$3,105.00
FY 2009	5	107146424	SUBDIVISION	PARAMOUNT NO 14	W KINGSLEY ST	243	\$5,589.00
FY 2009	5	107146424	SUBDIVISION	PARAMOUNT NO 14	N DUVALL AVE	258	\$5,934.00
FY 2009	5	107146424	SUBDIVISION	PARAMOUNT NO 14	W LAUGHTON DR	144	\$3,312.00
FY 2009	5	107146424	SUBDIVISION	PARAMOUNT NO 14	W LAUGHTON DR	607	\$13,961.00
FY 2009	5	107146424	SUBDIVISION	PARAMOUNT NO 14	W LAUGHTON DR	91	\$2,093.00
FY 2009	5	107146424	SUBDIVISION	PARAMOUNT NO 14	N WYMAN AVE	270	\$6,210.00
FY 2009	5	107139656	SUBDIVISION	SKYLIGHT	W SKYLIGHT ST	282	\$6,486.00
FY 2009	5	106180886	SUBDIVISION	SADDLEBROOK PHASE 05	W GAMBRELL ST	151	\$3,473.00
FY 2009	5	106036665	SUBDIVISION	SADDLEBROOK PHASE 04	W GAMBRELL ST	46	\$1,058.00
FY 2009	5	106198237	SUBDIVISION	PARKSTONE NO 01	W ACHILLEA ST	213	\$4,899.00
FY 2009	5	106198237	SUBDIVISION	PARKSTONE NO 01	S STREAMLEAF AVE	125	\$2,875.00
FY 2009	5	106198237	SUBDIVISION	PARKSTONE NO 01	S STREAMLEAF AVE	251	\$5,773.00
FY 2009	5	106198237	SUBDIVISION	PARKSTONE NO 01	W WHITECREST ST	355	\$8,165.00
FY 2009	5	106198237	SUBDIVISION	PARKSTONE NO 01	S HULLEN AVE	248	\$5,704.00
FY 2009	5	106198237	SUBDIVISION	PARKSTONE NO 01	W ACHILLEA ST	146	\$3,358.00
FY 2009	5	106198237	SUBDIVISION	PARKSTONE NO 01	W ACHILLEA ST	380	\$8,740.00
FY 2009	5	106198237	SUBDIVISION	PARKSTONE NO 01	S STREAMLEAF AVE	143	\$3,289.00
FY 2009	5	106198237	SUBDIVISION	PARKSTONE NO 01	S STREAMLEAF AVE	256	\$5,888.00
FY 2009	5	106198237	SUBDIVISION	PARKSTONE NO 01	S HULLEN AVE	228	\$5,244.00
FY 2009	5	106198237	SUBDIVISION	PARKSTONE NO 01	W PRESERVE ST	378	\$8,694.00
FY 2009	5	106198237	SUBDIVISION	PARKSTONE NO 01	W WILDBRANCH ST	355	\$8,165.00
FY 2009	5	107011117	SUBDIVISION	PEPPERTREE NO 01	S PEPPERRIDGE WAY	373	\$8,579.00
FY 2009	5	107011117	SUBDIVISION	PEPPERTREE NO 01	W SPRING RIVER DR	421	\$9,683.00
FY 2009	5	107011117	SUBDIVISION	PEPPERTREE NO 01	S MOONFIRE WAY	328	\$7,544.00
FY 2009	5	107011117	SUBDIVISION	PEPPERTREE NO 01	S MOON LAND AVE	284	\$6,532.00
FY 2009	5	107011117	SUBDIVISION	PEPPERTREE NO 01	S PEPPERRIDGE WAY	150	\$3,450.00
FY 2009	5	107011117	SUBDIVISION	PEPPERTREE NO 01	S MOONFIRE WAY	382	\$8,786.00
FY 2009	5	107011117	SUBDIVISION	PEPPERTREE NO 01	S MOONFIRE WAY	68	\$1,564.00
FY 2009	5	107011117	SUBDIVISION	PEPPERTREE NO 01	S PEPPERRIDGE WAY	70	\$1,610.00

FY 2009	5	107011117	SUBDIVISION	PEPPERTREE NO 01	W HEARTWOOD ST	32	\$736.00
FY 2009	5	107011117	SUBDIVISION	PEPPERTREE NO 01	W HEARTWOOD ST	153	\$3,519.00
FY 2009	5	107011117	SUBDIVISION	PEPPERTREE NO 01	S PEPPERVIEW WAY	88	\$2,024.00
FY 2009	5	107011117	SUBDIVISION	PEPPERTREE NO 01	S MOON LAND AVE	477	\$10,971.00
FY 2009	5	107011117	SUBDIVISION	PEPPERTREE NO 01	W ALLERTON ST	125	\$2,875.00
FY 2009	5	107011117	SUBDIVISION	PEPPERTREE NO 01	S MOON LAND AVE	38	\$874.00
FY 2009	5	107011117	SUBDIVISION	PEPPERTREE NO 01	W PEPPERGROVE ST	266	\$6,118.00
FY 2009	5	107011117	SUBDIVISION	PEPPERTREE NO 01	S PEPPERVIEW WAY	436	\$10,028.00
FY 2009	5	107133402	SUBDIVISION	MONET MEADOWS	W SCOTFIELD CT	661	\$15,203.00
FY 2009	5	107135238	SUBDIVISION	MILFORD CREEK	N CHAPALA WAY	133	\$3,059.00
FY 2009	5	107135238	SUBDIVISION	MILFORD CREEK	N CHAPALA WAY	325	\$7,475.00
FY 2009	5	107135238	SUBDIVISION	MILFORD CREEK	N CHAPALA WAY	124	\$2,852.00
FY 2009	5	107135238	SUBDIVISION	MILFORD CREEK	W MILFORD DR	269	\$6,187.00
FY 2009	5	107148029	SUBDIVISION	ZEBULON HEIGHTS NO 02	E WAGON ST	155	\$3,565.00
FY 2009	5	107148029	SUBDIVISION	ZEBULON HEIGHTS NO 02	N CAMAS CREEK WAY	130	\$2,990.00
FY 2009	5	107148029	SUBDIVISION	ZEBULON HEIGHTS NO 02	N CAMAS CREEK WAY	45	\$1,035.00
FY 2009	5	107148029	SUBDIVISION	ZEBULON HEIGHTS NO 02	N CAMAS CREEK WAY	519	\$11,937.00
FY 2009	5	107148029	SUBDIVISION	ZEBULON HEIGHTS NO 02	E HONEYWOOD CT	196	\$4,508.00
FY 2009	5	107148029	SUBDIVISION	ZEBULON HEIGHTS NO 02	N CAMAS CREEK WAY	343	\$7,889.00
FY 2009	5	107148029	SUBDIVISION	ZEBULON HEIGHTS NO 02	N LINWOOD WAY	157	\$3,611.00
FY 2009	5	107148029	SUBDIVISION	ZEBULON HEIGHTS NO 02	N LINWOOD WAY	797	\$18,331.00
FY 2009	5	107148029	SUBDIVISION	ZEBULON HEIGHTS NO 02	N ROGUE RIVER AVE	45	\$1,035.00
FY 2009	5	107148029	SUBDIVISION	ZEBULON HEIGHTS NO 02	N ROGUE RIVER AVE	165	\$3,795.00
FY 2009	5	107148029	SUBDIVISION	ZEBULON HEIGHTS NO 02	E WAINWRIGHT DR	358	\$8,234.00
FY 2009	5	107148029	SUBDIVISION	ZEBULON HEIGHTS NO 02	E WAINWRIGHT DR	503	\$11,569.00
FY 2009	5	107148029	SUBDIVISION	ZEBULON HEIGHTS NO 02	E WAINWRIGHT DR	104	\$2,392.00
FY 2009	5	107148029	SUBDIVISION	ZEBULON HEIGHTS NO 02	E WAINWRIGHT DR	44	\$1,012.00
FY 2009	5	107148029	SUBDIVISION	ZEBULON HEIGHTS NO 02	E WAINWRIGHT DR	174	\$4,002.00
FY 2009	5	107148029	SUBDIVISION	ZEBULON HEIGHTS NO 02	N DASHWOOD PL	414	\$9,522.00
FY 2009	5	107148029	SUBDIVISION	ZEBULON HEIGHTS NO 02	E WAINWRIGHT DR	330	\$7,590.00

FY 2009	5	107148029	SUBDIVISION	ZEBULON HEIGHTS NO 02	N BROOKSBURG PL	245	\$5,635.00
FY 2009	5	107135238	SUBDIVISION	MILFORD CREEK	W MEADOWDALE ST	367	\$8,441.00
FY 2009	5	107148029	SUBDIVISION	ZEBULON HEIGHTS NO 02	E WAINWRIGHT DR	191	\$4,393.00
FY 2009	5	108019263	SUBDIVISION	HAZELWOOD VILLAGE NO 02	S REDSHINE WAY	97	\$2,231.00
FY 2009	5	108019263	SUBDIVISION	HAZELWOOD VILLAGE NO 02	S REDSHINE WAY	229	\$5,267.00
FY 2009	5	108019263	SUBDIVISION	HAZELWOOD VILLAGE NO 02	S REDSHINE WAY	93	\$2,139.00
FY 2009	5	108019263	SUBDIVISION	HAZELWOOD VILLAGE NO 02	S REDSHINE WAY	135	\$3,105.00
FY 2009	5	108019263	SUBDIVISION	HAZELWOOD VILLAGE NO 02	W KUHNEN ST	38	\$874.00
FY 2009	5	108019263	SUBDIVISION	HAZELWOOD VILLAGE NO 02	W NAPIA ST	120	\$2,760.00
FY 2009	5	108019263	SUBDIVISION	HAZELWOOD VILLAGE NO 02	W NAPIA ST	317	\$7,291.00
FY 2009	5	108019263	SUBDIVISION	HAZELWOOD VILLAGE NO 02	S REDSHINE WAY	38	\$874.00
FY 2009	5	108019263	SUBDIVISION	HAZELWOOD VILLAGE NO 02	S REDSHINE WAY	105	\$2,415.00
FY 2009	5	108019263	SUBDIVISION	HAZELWOOD VILLAGE NO 02	W KUHNEN ST	360	\$8,280.00
FY 2009	5	108019263	SUBDIVISION	HAZELWOOD VILLAGE NO 02	W KUHNEN ST	298	\$6,854.00
FY 2009	5	108019263	SUBDIVISION	HAZELWOOD VILLAGE NO 02	W KUHNEN ST	126	\$2,898.00
FY 2009	5	108019263	SUBDIVISION	HAZELWOOD VILLAGE NO 02	S RABIA AVE	254	\$5,842.00
FY 2009	5	108019263	SUBDIVISION	HAZELWOOD VILLAGE NO 02	W SOLUNA DR	269	\$6,187.00
FY 2009	5	108019263	SUBDIVISION	HAZELWOOD VILLAGE NO 02	W SOLUNA DR	23	\$529.00
FY 2009	5	108019263	SUBDIVISION	HAZELWOOD VILLAGE NO 02	S TALASI AVE	127	\$2,921.00
FY 2009	5	107146438	SUBDIVISION	PARAMOUNT NO 15	W PRODUCER DR	191	\$4,393.00
FY 2009	5	107125435	SUBDIVISION	BELLATERRA	W VENETIAN DR	271	\$6,233.00
FY 2009	5	108027765	SUBDIVISION	VIZCAYA	E BEACON LIGHT RD	395	\$9,085.00
FY 2009	5	108027765	SUBDIVISION	VIZCAYA	E BEACON LIGHT RD	300	\$6,900.00
FY 2009	5	106198237	SUBDIVISION	PARKSTONE NO 01	S SENECA SPRINGS WAY	618	\$14,214.00
FY 2009	5	106153906	SUBDIVISION	SCHOOLHOUSE PARK NO 02	W SANDBOX ST	190	\$4,370.00
FY 2009	5	106153906	SUBDIVISION	SCHOOLHOUSE PARK NO 02	W SANDBOX ST	450	\$10,350.00
FY 2009	5	106153906	SUBDIVISION	SCHOOLHOUSE PARK NO 02	S RULER AVE	135	\$3,105.00
FY 2009	5	106153906	SUBDIVISION	SCHOOLHOUSE PARK NO 02	S LIBRARY AVE	137	\$3,151.00
FY 2009	5	106153906	SUBDIVISION	SCHOOLHOUSE PARK NO 02	W PLAYGROUND ST	135	\$3,105.00
FY 2009	5	106153906	SUBDIVISION	SCHOOLHOUSE PARK NO 02	W PLAYGROUND ST	132	\$3,036.00

FY 2009	5	106153906	SUBDIVISION	SCHOOLHOUSE PARK NO 02	S CHALKBOARD PL	501	\$11,523.00
FY 2009	5	106153906	SUBDIVISION	SCHOOLHOUSE PARK NO 02	S PENCIL AVE	404	\$9,292.00
FY 2009	5	106153906	SUBDIVISION	SCHOOLHOUSE PARK NO 02	S PENCIL AVE	129	\$2,967.00
FY 2009	5	106153906	SUBDIVISION	SCHOOLHOUSE PARK NO 02	W TEST CT	371	\$8,533.00
FY 2009	5	107150335	SUBDIVISION	GALIANO ESTATES	N COUNTRYSIDE AVE	455	\$10,465.00
FY 2009	5	107150335	SUBDIVISION	GALIANO ESTATES	N SUNSET FARM AVE	465	\$10,695.00
FY 2009	5	107150335	SUBDIVISION	GALIANO ESTATES	W CARAVAN ST	307	\$7,061.00
FY 2009	5	107150335	SUBDIVISION	GALIANO ESTATES	N COUNTRYSIDE AVE	420	\$9,660.00
FY 2009	5	107150335	SUBDIVISION	GALIANO ESTATES	W HEARTLAND DR	1130	\$25,990.00
FY 2009	5	107150335	SUBDIVISION	GALIANO ESTATES	N MORNING SUN AVE	176	\$4,048.00
FY 2009	5	107150335	SUBDIVISION	GALIANO ESTATES	N MORNING SUN AVE	152	\$3,496.00
FY 2009	5	107150335	SUBDIVISION	GALIANO ESTATES	W HEARTLAND DR	420	\$9,660.00
FY 2009	5	108027765	SUBDIVISION	VIZCAYA	N VIZCAYA WAY	2518	\$57,914.00
FY 2009	5	108027765	SUBDIVISION	VIZCAYA	N BISCAYNE PL	400	\$9,200.00
FY 2009	5	108027765	SUBDIVISION	VIZCAYA	N VIZCAYA PL	357	\$8,211.00
FY 2009	5	107119408	SUBDIVISION	GRAMERCY NO 01	E GRIFFON ST	470	\$10,810.00
FY 2009	5	107081550	SUBDIVISION	PARKSTONE NO 02	W WILDBRANCH DR	62	\$1,426.00
FY 2009	5	108056785	SUBDIVISION	PEBBLECREEK	N ROBSON AVE	228	\$5,244.00
FY 2009	5	108056785	SUBDIVISION	PEBBLECREEK	N UTAHNA ST	426	\$9,798.00
FY 2009	5	108056785	SUBDIVISION	PEBBLECREEK	W UTAHNA ST	362	\$8,326.00
FY 2009	5	108056785	SUBDIVISION	PEBBLECREEK	N GOODYEAR WAY	437	\$10,051.00
FY 2009	5	108056785	SUBDIVISION	PEBBLECREEK	N HOLE IN ONE PL	247	\$5,681.00
FY 2009	5	108025323	SUBDIVISION	CEDARCREEK	N WYMAN AVE	132	\$3,036.00
FY 2009	5	107146424	SUBDIVISION	PARAMOUNT NO 14	N WYMAN AVE	134	\$3,082.00
FY 2009	5	108025323	SUBDIVISION	CEDARCREEK	N RATHBONE AVE	320	\$7,360.00
FY 2009	5	108025323	SUBDIVISION	CEDARCREEK	N NEWSHAM AVE	131	\$3,013.00
FY 2009	5	108025323	SUBDIVISION	CEDARCREEK	N NEWSHAM AVE	168	\$3,864.00
FY 2009	5	108025323	SUBDIVISION	CEDARCREEK	N WYMAN WAY	320	\$7,360.00
FY 2009	5	108025323	SUBDIVISION	CEDARCREEK	W ARCHERFIELD ST	430	\$9,890.00
FY 2009	5	108025323	SUBDIVISION	CEDARCREEK	W ARCHERFIELD ST	428	\$9,844.00

FY 2009	5	108025323	SUBDIVISION	CEDARCREEK	W BLUEFIR ST	141	\$3,243.00
FY 2009	5	108025323	SUBDIVISION	CEDARCREEK	W RAMSBROOK ST	154	\$3,542.00
FY 2009	5	108025323	SUBDIVISION	CEDARCREEK	W RAMSBROOK ST	430	\$9,890.00
FY 2009	5	108025323	SUBDIVISION	CEDARCREEK	W RAMSBROOK ST	274	\$6,302.00
FY 2009	5	108025323	SUBDIVISION	CEDARCREEK	W RAMSBROOK ST	131	\$3,013.00
FY 2009	5	108054317	SUBDIVISION	BITTERBRUSH POINT	S BLACKSPUR WAY	231	\$5,313.00
FY 2009	5	108054317	SUBDIVISION	BITTERBRUSH POINT	S BLACKSPUR WAY	137	\$3,151.00
FY 2009	5	108054317	SUBDIVISION	BITTERBRUSH POINT	S BLACKSPUR WAY	146	\$3,358.00
FY 2009	5	108054317	SUBDIVISION	BITTERBRUSH POINT	E LAKE CREEK ST	431	\$9,913.00
FY 2009	5	108054317	SUBDIVISION	BITTERBRUSH POINT	E OBSERVATION DR	525	\$12,075.00
FY 2009	5	107011117	SUBDIVISION	PEPPERTREE NO 01	W HEARTWOOD ST	155	\$3,565.00
FY 2009	5	107081550	SUBDIVISION	PARKSTONE NO 02	S PLUMMER WAY	920	\$21,160.00
FY 2009	5	108019263	SUBDIVISION	HAZELWOOD VILLAGE NO 02	W NAPIA ST	131	\$3,013.00
FY 2009	5	108019263	SUBDIVISION	HAZELWOOD VILLAGE NO 02	W SOLUNA DR	345	\$7,935.00
FY 2009	5	107119408	SUBDIVISION	GRAMERCY NO 01	S WELLS AVE	345	\$7,935.00
FY 2009	5	106153906	SUBDIVISION	SCHOOLHOUSE PARK NO 02	S RULER PL	160	\$3,680.00
FY 2009	5	107011117	SUBDIVISION	PEPPERTREE NO 01	W ALLERTON ST	155	\$3,565.00
FY 2009	5	107150335	SUBDIVISION	GALIANO ESTATES	N COUNTRYSIDE AVE	223	\$5,129.00
FY 2009	5	108025323	SUBDIVISION	CEDARCREEK	W ARCHERFIELD CT	186	\$4,278.00
FY 2009	5	108095426	SUBDIVISION	PARAMOUNT NO 16	W KINGSLEY ST	141	\$3,243.00
FY 2009	5	108095426	SUBDIVISION	PARAMOUNT NO 16	W VALENTINO ST	46	\$1,058.00
FY 2009	5	108095426	SUBDIVISION	PARAMOUNT NO 16	W VALENTINO ST	521	\$11,983.00
FY 2009	5	108095426	SUBDIVISION	PARAMOUNT NO 16	N LANGE AVE	428	\$9,844.00
FY 2009	5	108095426	SUBDIVISION	PARAMOUNT NO 16	W WOODWARD ST	135	\$3,105.00
FY 2009	5	107146438	SUBDIVISION	PARAMOUNT NO 15	N LANGE AVE	149	\$3,427.00
FY 2009	5	108095426	SUBDIVISION	PARAMOUNT NO 16	N LANGE AVE	276	\$6,348.00
FY 2009	5	108096956	SUBDIVISION	NATIVA TERRA NO 04	N ALTO VIA CT	525	\$12,075.00
FY 2009	5	108096956	SUBDIVISION	NATIVA TERRA NO 04	N ALTO VIA CT	931	\$21,413.00
FY 2009	5	108112189	SUBDIVISION	SHEPHERD CREEK	S GARIBALDI AVE	45	\$1,035.00
FY 2009	5	108112189	SUBDIVISION	SHEPHERD CREEK	W KODIAK DR	241	\$5,543.00

FY 2009	5	108112189	SUBDIVISION	SHEPHERD CREEK	W KODIAK DR	123	\$2,829.00
FY 2009	5	108112189	SUBDIVISION	SHEPHERD CREEK	S GARIBALDI AVE	309	\$7,107.00
FY 2009	5	108112189	SUBDIVISION	SHEPHERD CREEK	W BEAR TRACK DR	125	\$2,875.00
FY 2009	5	108112189	SUBDIVISION	SHEPHERD CREEK	S RIPTIDE AVE	849	\$19,527.00
FY 2009	5	108112189	SUBDIVISION	SHEPHERD CREEK	S GARIBALDI AVE	583	\$13,409.00
FY 2009	5	108112189	SUBDIVISION	SHEPHERD CREEK	W WHITEHALL DR	192	\$4,416.00
FY 2009	5	108112189	SUBDIVISION	SHEPHERD CREEK	S GARIBALDI AVE	128	\$2,944.00
FY 2009	5	108118296	SUBDIVISION	ROXEY PLACE NO 02	N FORBES AVE	370	\$8,510.00
FY 2009	5	108118296	SUBDIVISION	ROXEY PLACE NO 02	W CANYON CREEK ST	434	\$9,982.00
FY 2009	5	108118296	SUBDIVISION	ROXEY PLACE NO 02	W AUDRA LN	224	\$5,152.00
FY 2009	5	109079423	SUBDIVISION	THREE CORNERS NO 01	N LOCUST GROVE RD	740	\$17,020.00
FY 2009	5	108118705	SUBDIVISION	BELLINGHAM PARK NO 03	E DEERHILL DR	120	\$2,760.00
FY 2009	5	108118705	SUBDIVISION	BELLINGHAM PARK NO 03	E WRIGHTWOOD DR	141	\$3,243.00
FY 2009	5	108118705	SUBDIVISION	BELLINGHAM PARK NO 03	S RANGEWOOD WAY	836	\$19,228.00
FY 2009	5	108118705	SUBDIVISION	BELLINGHAM PARK NO 03	E WRIGHTWOOD DR	140	\$3,220.00
FY 2009	5	108118705	SUBDIVISION	BELLINGHAM PARK NO 03	S RANGEWOOD WAY	224	\$5,152.00
FY 2009	5	107148029	SUBDIVISION	ZEBULON HEIGHTS NO 02	E WAINWRIGHT DR	282	\$6,486.00
FY 2009	5	108056785	SUBDIVISION	PEBBLECREEK	W UTAHNA ST	128	\$2,944.00
FY 2009	5	108025323	SUBDIVISION	CEDARCREEK	W MCMILLAN RD	736	\$16,928.00
FY 2009	5	108025323	SUBDIVISION	CEDARCREEK	W MCMILLAN RD	404	\$9,292.00
FY 2009	5	108025323	SUBDIVISION	CEDARCREEK	N SUMMIT WAY	7	\$161.00
FY 2009	5	108025323	SUBDIVISION	CEDARCREEK	N SUMMIT AVE	202	\$4,646.00
FY 2009	5	108054317	SUBDIVISION	BITTERBRUSH POINT	E LOGGERS PASS ST	157	\$3,611.00
FY 2009	5	109009804	SUBDIVISION	ARTS WEST	N FISHER PARK WAY	480	\$11,040.00
FY 2009	5	109011443	SUBDIVISION	CABRA CREEK	W ROSSLARE DR	1087	\$25,001.00
FY 2009	5	109011443	SUBDIVISION	CABRA CREEK	W ROSSLARE CT	216	\$4,968.00
FY 2009	5	109011443	SUBDIVISION	CABRA CREEK	W HARKER ST	426	\$9,798.00
FY 2009	5	109005535	SUBDIVISION	PINETREE VILLAGE NO 01	S PINE TREE LN	26	\$598.00
FY 2009	5	109005535	SUBDIVISION	PINETREE VILLAGE NO 01	S PINE TREE LN	60	\$1,380.00
FY 2009	5	109005535	SUBDIVISION	PINETREE VILLAGE NO 01	S PINE TREE LN	30	\$690.00



FY 2009	5	109005535	SUBDIVISION	PINETREE VILLAGE NO 01	S PINE TREE LN	195	\$4,485.00
FY 2009	5	109005535	SUBDIVISION	PINETREE VILLAGE NO 01	S PINE TREE LN	171	\$3,933.00
FY 2009	5	109005535	SUBDIVISION	PINETREE VILLAGE NO 01	W EVENING STAR LN	25	\$575.00
FY 2009	5	109005535	SUBDIVISION	PINETREE VILLAGE NO 01	W EVENING STAR LN	418	\$9,614.00
FY 2009	5	109005535	SUBDIVISION	PINETREE VILLAGE NO 01	S BLUE PINE LN	87	\$2,001.00
FY 2009	5	109005535	SUBDIVISION	PINETREE VILLAGE NO 01	S BLUE PINE LN	204	\$4,692.00
FY 2009	5	109027436	SUBDIVISION	CATALPA	W CALIBER CT	1107	\$25,461.00
FY 2009	5	109005070	SUBDIVISION	BIENVILLE SQUARE	N CAJUN LN	229	\$5,267.00
FY 2009	5	109005070	SUBDIVISION	BIENVILLE SQUARE	N CAJUN LN	419	\$9,637.00
FY 2009	5	109005070	SUBDIVISION	BIENVILLE SQUARE	E BOURBON LN	474	\$10,902.00
FY 2009	5	109005070	SUBDIVISION	BIENVILLE SQUARE	E PICARD LN	442	\$10,166.00
FY 2009	5	109005070	SUBDIVISION	BIENVILLE SQUARE	N LEBLANC WAY	803	\$18,469.00
FY 2009	5	109005070	SUBDIVISION	BIENVILLE SQUARE	E BOURBON ST	150	\$3,450.00
FY 2009	5	109005070	SUBDIVISION	BIENVILLE SQUARE	E BOURBON ST	142	\$3,266.00
FY 2009	5	109005070	SUBDIVISION	BIENVILLE SQUARE	N CENTREPOINT WAY	846	\$19,458.00
FY 2009	5	109005070	SUBDIVISION	BIENVILLE SQUARE	N CENTREPOINT WAY	109	\$2,507.00
FY 2009	5	109005070	SUBDIVISION	BIENVILLE SQUARE	E PICARD ST	121	\$2,783.00
FY 2009	5	109005070	SUBDIVISION	BIENVILLE SQUARE	E PICARD ST	170	\$3,910.00
FY 2009	5	107150335	SUBDIVISION	GALIANO ESTATES	W OAK TREE DR	800	\$18,400.00
FY 2009	5	107150335	SUBDIVISION	GALIANO ESTATES	W OAK TREE DR	269	\$6,187.00
FY 2009	5	107150335	SUBDIVISION	GALIANO ESTATES	W OAK TREE DR	251	\$5,773.00
FY 2009	5	109059094	SUBDIVISION	PINETREE VILLAGE NO 02	S PINE GROVE LN	115	\$2,645.00
FY 2009	5	109059094	SUBDIVISION	PINETREE VILLAGE NO 02	S BLUE PINE LN	76	\$1,748.00
FY 2009	5	109059094	SUBDIVISION	PINETREE VILLAGE NO 02	S BLUE PINE LN	131	\$3,013.00
FY 2009	5	109059094	SUBDIVISION	PINETREE VILLAGE NO 02	S PINE TREE LN	78	\$1,794.00
FY 2009	5	109070685	SUBDIVISION	SUNNYRIDGE PHASE 01	S SNOW BIRD AVE	205	\$4,715.00
FY 2009	5	109070685	SUBDIVISION	SUNNYRIDGE PHASE 01	E BEND RIDGE ST	50	\$1,150.00
FY 2009	5	109070685	SUBDIVISION	SUNNYRIDGE PHASE 01	S SNOW BIRD AVE	35	\$805.00
FY 2009	5	109070685	SUBDIVISION	SUNNYRIDGE PHASE 01	S SNOW BIRD AVE	156	\$3,588.00
FY 2009	5	109070685	SUBDIVISION	SUNNYRIDGE PHASE 01	S SNOW BIRD AVE	157	\$3,611.00

FY 2009	5	109070685	SUBDIVISION	SUNNYRIDGE PHASE 01	E DEER RIDGE ST	169	\$3,887.00
FY 2009	5	109070685	SUBDIVISION	SUNNYRIDGE PHASE 01	E DEER RIDGE ST	145	\$3,335.00
FY 2009	5	109070685	SUBDIVISION	SUNNYRIDGE PHASE 01	S SNOW BIRD AVE	365	\$8,395.00
FY 2009	5	109070685	SUBDIVISION	SUNNYRIDGE PHASE 01	S SNOW BIRD AVE	49	\$1,127.00
FY 2009	5	109070685	SUBDIVISION	SUNNYRIDGE PHASE 01	E BEAR RIDGE ST	265	\$6,095.00
FY 2009	5	109070685	SUBDIVISION	SUNNYRIDGE PHASE 01	E BEAR RIDGE ST	70	\$1,610.00
FY 2009	5	109070685	SUBDIVISION	SUNNYRIDGE PHASE 01	E BEAR RIDGE ST	56	\$1,288.00
FY 2009	5	109070685	SUBDIVISION	SUNNYRIDGE PHASE 01	E DEER RIDGE ST	312	\$7,176.00
FY 2009	5	109070685	SUBDIVISION	SUNNYRIDGE PHASE 01	E DEER RIDGE ST	135	\$3,105.00
FY 2009	5	109070685	SUBDIVISION	SUNNYRIDGE PHASE 01	S BOGUS RIDGE WAY	50	\$1,150.00
FY 2009	5	109070685	SUBDIVISION	SUNNYRIDGE PHASE 01	S BOGUS RIDGE WAY	272	\$6,256.00
FY 2009	5	109070685	SUBDIVISION	SUNNYRIDGE PHASE 01	E BEND RIDGE ST	72	\$1,656.00
FY 2009	5	109070685	SUBDIVISION	SUNNYRIDGE PHASE 01	E BEND RIDGE ST	372	\$8,556.00
FY 2009	5	109086379	SUBDIVISION	ENGLEFIELD GREEN NO 03	S ALLUMBAUGH WAY	1021	\$23,483.00
FY 2009	5	109096462	SUBDIVISION	ANGORA	W AXTELL CT	49	\$1,127.00
FY 2009	5	109096462	SUBDIVISION	ANGORA	W AXTELL CT	410	\$9,430.00
FY 2009	5	109096462	SUBDIVISION	ANGORA	W AXTELL CT	50	\$1,150.00
FY 2009	5	106028185	SUBDIVISION	TWO RIVERS NO 12	W RIVERBRIDGE LN	78	\$1,794.00
FY 2009	5	106028185	SUBDIVISION	TWO RIVERS NO 12	W RIVERBRIDGE LN	182	\$4,186.00
FY 2009	5	106028185	SUBDIVISION	TWO RIVERS NO 12	W RIVERBRIDGE LN	116	\$2,668.00
FY 2009	5	107121417	SUBDIVISION	TANA HEIGHTS	N BREMERTON PL	155	\$3,565.00
FY 2009	5	107121417	SUBDIVISION	TANA HEIGHTS	N BREMERTON PL	48	\$1,104.00
FY 2009	5	107121417	SUBDIVISION	TANA HEIGHTS	N BREMERTON PL	48	\$1,104.00
FY 2009	5	108019263	SUBDIVISION	HAZELWOOD VILLAGE NO 02	W NAPIA ST	170	\$3,910.00
FY 2009	5	109099720	SUBDIVISION	DUNHAM COMMONS NO 01	W FENESTRA ST	217	\$4,991.00
FY 2009	5	109099720	SUBDIVISION	DUNHAM COMMONS NO 01	W DUNHAM DR	307	\$7,061.00
FY 2009	5	109099720	SUBDIVISION	DUNHAM COMMONS NO 01	S TRUTINA AVE	189	\$4,347.00
FY 2009	5	109099720	SUBDIVISION	DUNHAM COMMONS NO 01	S TRUTINA AVE	231	\$5,313.00
FY 2009	5	109099720	SUBDIVISION	DUNHAM COMMONS NO 01	W DUNHAM LN	317	\$7,291.00
FY 2009	5	109099720	SUBDIVISION	DUNHAM COMMONS NO 01	S TRUTINA LN	283	\$6,509.00

FY 2009	5	106149968	SUBDIVISION	EYRIE CANYON NO 03	N VILLA RIDGE WAY	497	\$11,431.00
FY 2009	5	106149968	SUBDIVISION	EYRIE CANYON NO 03	N ARROW VILLA WAY	342	\$7,866.00
FY 2009	5	108028316	SUBDIVISION	MOSCA SECA NO 01	W BRIAR ROCK DR	11	\$253.00
FY 2009	5	108028316	SUBDIVISION	MOSCA SECA NO 01	W BRIAR ROCK DR	11	\$253.00
FY 2009	5	108028316	SUBDIVISION	MOSCA SECA NO 01	W CLEAR FIELD DR	11	\$253.00
FY 2009	5	108028316	SUBDIVISION	MOSCA SECA NO 01	W CLEAR FIELD DR	11	\$253.00
FY 2009	5	107141888	SUBDIVISION	PLACERVILLE	W KERF ST	239	\$5,497.00
FY 2009	5	107141888	SUBDIVISION	PLACERVILLE	W KERF ST	239	\$5,497.00
FY 2009	5	107141888	SUBDIVISION	PLACERVILLE	S RETORT AVE	204	\$4,692.00
FY 2009	5	107141888	SUBDIVISION	PLACERVILLE	S RETORT AVE	204	\$4,692.00
FY 2009	5	107141888	SUBDIVISION	PLACERVILLE	S RETORT AVE	181	\$4,163.00
FY 2009	5	107141888	SUBDIVISION	PLACERVILLE	S RETORT AVE	181	\$4,163.00
FY 2009	5	107141888	SUBDIVISION	PLACERVILLE	S WHIM AVE	300	\$6,900.00
FY 2009	5	107141888	SUBDIVISION	PLACERVILLE	S WHIM AVE	300	\$6,900.00
FY 2009	5	107141888	SUBDIVISION	PLACERVILLE	W KERF ST	252	\$5,796.00
FY 2009	5	107141888	SUBDIVISION	PLACERVILLE	W KERF ST	252	\$5,796.00
FY 2009	5	107141888	SUBDIVISION	PLACERVILLE	W KERF ST	250	\$5,750.00
FY 2009	5	107141888	SUBDIVISION	PLACERVILLE	W KERF ST	250	\$5,750.00
FY 2009	5	107141888	SUBDIVISION	PLACERVILLE	S TAILINGS AVE	409	\$9,407.00
FY 2009	5	107141888	SUBDIVISION	PLACERVILLE	S TAILINGS AVE	409	\$9,407.00
FY 2009	5	107141888	SUBDIVISION	PLACERVILLE	W SCOOP ST	251	\$5,773.00
FY 2009	5	107141888	SUBDIVISION	PLACERVILLE	W SCOOP ST	251	\$5,773.00
FY 2009	5	107141888	SUBDIVISION	PLACERVILLE	S ROCKER AVE	125	\$2,875.00
FY 2009	5	107141888	SUBDIVISION	PLACERVILLE	S ROCKER AVE	125	\$2,875.00
FY 2009	5	107141888	SUBDIVISION	PLACERVILLE	S ROCKER AVE	411	\$9,453.00
FY 2009	5	107141888	SUBDIVISION	PLACERVILLE	S ROCKER AVE	411	\$9,453.00
FY 2009	5	107141888	SUBDIVISION	PLACERVILLE	S ROCKER AVE	125	\$2,875.00
FY 2009	5	107141888	SUBDIVISION	PLACERVILLE	S ROCKER AVE	125	\$2,875.00
FY 2009	5	107141888	SUBDIVISION	PLACERVILLE	W PLACERVILLE ST	170	\$3,910.00
FY 2009	5	107141888	SUBDIVISION	PLACERVILLE	W PLACERVILLE ST	170	\$3,910.00

FY 2009	5	107141888	SUBDIVISION	PLACERVILLE	W PENELOPE ST	348	\$8,004.00
FY 2009	5	107141888	SUBDIVISION	PLACERVILLE	W PENELOPE ST	348	\$8,004.00
FY 2009	5	108028316	SUBDIVISION	MOSCA SECA NO 01	W EAGLE LANDING CT	343	\$7,889.00
FY 2009	5	108028316	SUBDIVISION	MOSCA SECA NO 01	W EAGLE LANDING CT	343	\$7,889.00
FY 2009	5	108028316	SUBDIVISION	MOSCA SECA NO 01	W ATHENS CT	242	\$5,566.00
FY 2009	5	108028316	SUBDIVISION	MOSCA SECA NO 01	W ATHENS CT	242	\$5,566.00
FY 2009	5	108028316	SUBDIVISION	MOSCA SECA NO 01	N RACING WATER WAY	179	\$4,117.00
FY 2009	5	108028316	SUBDIVISION	MOSCA SECA NO 01	N RACING WATER WAY	179	\$4,117.00
FY 2009	5	108028316	SUBDIVISION	MOSCA SECA NO 01	W OLYMPIC PARK DR	129	\$2,967.00
FY 2009	5	108028316	SUBDIVISION	MOSCA SECA NO 01	W OLYMPIC PARK DR	129	\$2,967.00
FY 2009	5	108028316	SUBDIVISION	MOSCA SECA NO 01	W OLYMPIC PARK DR	155	\$3,565.00
FY 2009	5	108028316	SUBDIVISION	MOSCA SECA NO 01	W OLYMPIC PARK DR	155	\$3,565.00
FY 2009	5	108028316	SUBDIVISION	MOSCA SECA NO 01	W OLYMPIC PARK DR	192	\$4,416.00
FY 2009	5	108028316	SUBDIVISION	MOSCA SECA NO 01	W OLYMPIC PARK DR	192	\$4,416.00
FY 2009	5	108028316	SUBDIVISION	MOSCA SECA NO 01	N CHAMPIONS WAY	279	\$6,417.00
FY 2009	5	108028316	SUBDIVISION	MOSCA SECA NO 01	N CHAMPIONS WAY	279	\$6,417.00
FY 2009	5	108028316	SUBDIVISION	MOSCA SECA NO 01	N CHAMPIONS WAY	295	\$6,785.00
FY 2009	5	108028316	SUBDIVISION	MOSCA SECA NO 01	N CHAMPIONS WAY	295	\$6,785.00
FY 2009	5	108028316	SUBDIVISION	MOSCA SECA NO 01	N CHAMPIONS WAY	178	\$4,094.00
FY 2009	5	108028316	SUBDIVISION	MOSCA SECA NO 01	N CHAMPIONS WAY	178	\$4,094.00
FY 2009	5	108028316	SUBDIVISION	MOSCA SECA NO 01	W FOUNDERS DR	94	\$2,162.00
FY 2009	5	108028316	SUBDIVISION	MOSCA SECA NO 01	W FOUNDERS DR	94	\$2,162.00
FY 2009	5	108028316	SUBDIVISION	MOSCA SECA NO 01	W FOUNDERS DR	852	\$19,596.00
FY 2009	5	108028316	SUBDIVISION	MOSCA SECA NO 01	W FOUNDERS DR	852	\$19,596.00
FY 2009	5	108028316	SUBDIVISION	MOSCA SECA NO 01	N RACING WATER WAY	391	\$8,993.00
FY 2009	5	108028316	SUBDIVISION	MOSCA SECA NO 01	N RACING WATER WAY	391	\$8,993.00
FY 2009	5	108028316	SUBDIVISION	MOSCA SECA NO 01	N RACING WATER WAY	195	\$4,485.00
FY 2009	5	108028316	SUBDIVISION	MOSCA SECA NO 01	N RACING WATER WAY	195	\$4,485.00
FY 2009	5	108028316	SUBDIVISION	MOSCA SECA NO 01	N CHAMPIONS WAY	508	\$11,684.00
FY 2009	5	108028316	SUBDIVISION	MOSCA SECA NO 01	N CHAMPIONS WAY	508	\$11,684.00

FY 2009	5	108028316	SUBDIVISION	MOSCA SECA NO 01	W SIGNATURE DR	774	\$17,802.00
FY 2009	5	108028316	SUBDIVISION	MOSCA SECA NO 01	W SIGNATURE DR	774	\$17,802.00
FY 2009	5	108028316	SUBDIVISION	MOSCA SECA NO 01	N MAJORS AVE	142	\$3,266.00
FY 2009	5	108028316	SUBDIVISION	MOSCA SECA NO 01	N MAJORS AVE	142	\$3,266.00
FY 2009	5	108028316	SUBDIVISION	MOSCA SECA NO 01	W ACADEMY DR	85	\$1,955.00
FY 2009	5	108028316	SUBDIVISION	MOSCA SECA NO 01	W ACADEMY DR	85	\$1,955.00
FY 2009	5	108028316	SUBDIVISION	MOSCA SECA NO 01	W ACADEMY DR	45	\$1,035.00
FY 2009	5	108028316	SUBDIVISION	MOSCA SECA NO 01	W ACADEMY DR	45	\$1,035.00
FY 2009	5	108028316	SUBDIVISION	MOSCA SECA NO 01	W EAGLE LANDING CT	335	\$7,705.00
FY 2009	5	108028316	SUBDIVISION	MOSCA SECA NO 01	W EAGLE LANDING CT	335	\$7,705.00
FY 2009	5	108028316	SUBDIVISION	MOSCA SECA NO 01	N CHAMPIONS WAY	426	\$9,798.00
FY 2009	5	108028316	SUBDIVISION	MOSCA SECA NO 01	N CHAMPIONS WAY	426	\$9,798.00
FY 2009	5	108028316	SUBDIVISION	MOSCA SECA NO 01	N CHAMPIONS WAY	410	\$9,430.00
FY 2009	5	108028316	SUBDIVISION	MOSCA SECA NO 01	N CHAMPIONS WAY	410	\$9,430.00
FY 2009	5	108028316	SUBDIVISION	MOSCA SECA NO 01	W OLYMPIC PARK	344	\$7,912.00
FY 2009	5	108028316	SUBDIVISION	MOSCA SECA NO 01	W OLYMPIC PARK	344	\$7,912.00
FY 2009	5	108028316	SUBDIVISION	MOSCA SECA NO 01	W SIGNATURE DR	1237	\$28,451.00
FY 2009	5	108028316	SUBDIVISION	MOSCA SECA NO 01	W SIGNATURE DR	1237	\$28,451.00
FY 2009	5	108028316	SUBDIVISION	MOSCA SECA NO 01	W SIGNATURE DR	505	\$11,615.00
FY 2009	5	108028316	SUBDIVISION	MOSCA SECA NO 01	W SIGNATURE DR	505	\$11,615.00
FY 2009	5	108028316	SUBDIVISION	MOSCA SECA NO 01	N WORLD CUP LN	30	\$690.00
FY 2009	5	108028316	SUBDIVISION	MOSCA SECA NO 01	N WORLD CUP LN	30	\$690.00
FY 2009	5	108028316	SUBDIVISION	MOSCA SECA NO 01	N LINDER RD	200	\$4,600.00
FY 2009	5	108028316	SUBDIVISION	MOSCA SECA NO 01	N LINDER RD	200	\$4,600.00
FY 2009	5	108028316	SUBDIVISION	MOSCA SECA NO 01	N LINDER RD	300	\$6,900.00
FY 2009	5	108028316	SUBDIVISION	MOSCA SECA NO 01	N LINDER RD	300	\$6,900.00
FY 2009	5	108028316	SUBDIVISION	MOSCA SECA NO 01	N LINDER RD	489	\$11,247.00
FY 2009	5	108028316	SUBDIVISION	MOSCA SECA NO 01	N LINDER RD	489	\$11,247.00
FY 2009	5	108028316	SUBDIVISION	MOSCA SECA NO 01	W CLEAR FIELD ST	170	\$3,910.00
FY 2009	5	108028316	SUBDIVISION	MOSCA SECA NO 01	W CLEAR FIELD ST	170	\$3,910.00

FY 2009	5	108028316	SUBDIVISION	MOSCA SECA NO 01	W CLEAR FIELD CT	178	\$4,094.00
FY 2009	5	108028316	SUBDIVISION	MOSCA SECA NO 01	W CLEAR FIELD CT	178	\$4,094.00
FY 2009	5	108028316	SUBDIVISION	MOSCA SECA NO 01	N SEVEN GOLDS AVE	375	\$8,625.00
FY 2009	5	108028316	SUBDIVISION	MOSCA SECA NO 01	N SEVEN GOLDS AVE	375	\$8,625.00
FY 2009	5	108028316	SUBDIVISION	MOSCA SECA NO 01	W CLEAR FIELD ST	181	\$4,163.00
FY 2009	5	108028316	SUBDIVISION	MOSCA SECA NO 01	W CLEAR FIELD ST	181	\$4,163.00
FY 2009	5	108096411	SUBDIVISION	MOSCA SECA NO 02	W STADIUM LN	40	\$920.00
FY 2009	5	108096411	SUBDIVISION	MOSCA SECA NO 02	W STADIUM LN	40	\$920.00
FY 2009	5	108096411	SUBDIVISION	MOSCA SECA NO 02	W STADIUM LN	40	\$920.00
FY 2009	5	108096411	SUBDIVISION	MOSCA SECA NO 02	W STADIUM LN	40	\$920.00
FY 2009	5	108096411	SUBDIVISION	MOSCA SECA NO 02	W STADIUM LN	40	\$920.00
FY 2009	5	108096411	SUBDIVISION	MOSCA SECA NO 02	W STADIUM LN	40	\$920.00
FY 2009	5	108096411	SUBDIVISION	MOSCA SECA NO 02	W STADIUM LN	592	\$13,616.00
FY 2009	5	108096411	SUBDIVISION	MOSCA SECA NO 02	W STADIUM LN	592	\$13,616.00
FY 2009	5	108096411	SUBDIVISION	MOSCA SECA NO 02	W STADIUM LN	592	\$13,616.00
FY 2009	5	108096411	SUBDIVISION	MOSCA SECA NO 02	N WORLD CUP LN	338	\$7,774.00
FY 2009	5	108096411	SUBDIVISION	MOSCA SECA NO 02	N WORLD CUP LN	338	\$7,774.00
FY 2009	5	108096411	SUBDIVISION	MOSCA SECA NO 02	N WORLD CUP LN	338	\$7,774.00
FY 2009	5	108096411	SUBDIVISION	MOSCA SECA NO 02	N WORLD CUP LN	286	\$6,578.00
FY 2009	5	108096411	SUBDIVISION	MOSCA SECA NO 02	N WORLD CUP LN	286	\$6,578.00
FY 2009	5	108096411	SUBDIVISION	MOSCA SECA NO 02	N WORLD CUP LN	286	\$6,578.00
FY 2009	5	108096411	SUBDIVISION	MOSCA SECA NO 02	W HAMM LN	845	\$19,435.00
FY 2009	5	108096411	SUBDIVISION	MOSCA SECA NO 02	W HAMM LN	845	\$19,435.00
FY 2009	5	108096411	SUBDIVISION	MOSCA SECA NO 02	W HAMM LN	845	\$19,435.00
FY 2009	5	108096411	SUBDIVISION	MOSCA SECA NO 02	N FOU DY LN	360	\$8,280.00
FY 2009	5	108096411	SUBDIVISION	MOSCA SECA NO 02	N FOU DY LN	360	\$8,280.00
FY 2009	5	108096411	SUBDIVISION	MOSCA SECA NO 02	N FOU DY LN	360	\$8,280.00
FY 2009	5	108096411	SUBDIVISION	MOSCA SECA NO 02	N WORLD CUP LN	443	\$10,189.00
FY 2009	5	108096411	SUBDIVISION	MOSCA SECA NO 02	N WORLD CUP LN	443	\$10,189.00
FY 2009	5	108096411	SUBDIVISION	MOSCA SECA NO 02	N WORLD CUP LN	443	\$10,189.00

FY 2009	5	108096411	SUBDIVISION	MOSCA SECA NO 02	W STRIKER LN	300	\$6,900.00
FY 2009	5	108096411	SUBDIVISION	MOSCA SECA NO 02	W STRIKER LN	300	\$6,900.00
FY 2009	5	108096411	SUBDIVISION	MOSCA SECA NO 02	W STRIKER LN	300	\$6,900.00
FY 2009	5	108096411	SUBDIVISION	MOSCA SECA NO 02	W STRIKER LN	180	\$4,140.00
FY 2009	5	108096411	SUBDIVISION	MOSCA SECA NO 02	W STRIKER LN	180	\$4,140.00
FY 2009	5	108096411	SUBDIVISION	MOSCA SECA NO 02	W STRIKER LN	180	\$4,140.00
FY 2009	5	108096411	SUBDIVISION	MOSCA SECA NO 02	N FOU DY LN	665	\$15,295.00
FY 2009	5	108096411	SUBDIVISION	MOSCA SECA NO 02	N FOU DY LN	665	\$15,295.00
FY 2009	5	108096411	SUBDIVISION	MOSCA SECA NO 02	N FOU DY LN	665	\$15,295.00
FY 2009	5	108096411	SUBDIVISION	MOSCA SECA NO 02	N WORLD CUP LN	584	\$13,432.00
FY 2009	5	108096411	SUBDIVISION	MOSCA SECA NO 02	N WORLD CUP LN	584	\$13,432.00
FY 2009	5	108096411	SUBDIVISION	MOSCA SECA NO 02	N WORLD CUP LN	584	\$13,432.00
FY 2009	5	108096411	SUBDIVISION	MOSCA SECA NO 02	W CHASTAIN LN	789	\$18,147.00
FY 2009	5	108096411	SUBDIVISION	MOSCA SECA NO 02	W CHASTAIN LN	789	\$18,147.00
FY 2009	5	108096411	SUBDIVISION	MOSCA SECA NO 02	W CHASTAIN LN	789	\$18,147.00
FY 2009	5	108096411	SUBDIVISION	MOSCA SECA NO 02	N SYNERGY LN	376	\$8,648.00
FY 2009	5	108096411	SUBDIVISION	MOSCA SECA NO 02	N SYNERGY LN	376	\$8,648.00
FY 2009	5	108096411	SUBDIVISION	MOSCA SECA NO 02	N SYNERGY LN	376	\$8,648.00
FY 2009	5	108096411	SUBDIVISION	MOSCA SECA NO 02	W STRIKER LN	407	\$9,361.00
FY 2009	5	108096411	SUBDIVISION	MOSCA SECA NO 02	W STRIKER LN	407	\$9,361.00
FY 2009	5	108096411	SUBDIVISION	MOSCA SECA NO 02	W STRIKER LN	407	\$9,361.00
FY 2009	5	108070831	SUBDIVISION	CHATHAM TOWNE	N FIVE MILE RD	27	\$621.00
FY 2009	5	108070831	SUBDIVISION	CHATHAM TOWNE	N FIVE MILE RD	29	\$667.00
FY 2009	5	108070831	SUBDIVISION	CHATHAM TOWNE	N FIVE MILE RD	35	\$805.00
							<b>\$3,155,301.00</b>

## Appendix B

### Fiscal Year 2009 Sidewalk Repair Pedestrian Ramps

Year	ProjectNo	ORIGIN	Project Name	Construction Type	Number of Ramps	Cost <sup>2</sup>
FY 2009	MD31-WO11	Misc. Concrete	ACHD Misc Concrete Repair	INSTALL	4	\$4,024
FY 2009	MD-38-WO2	Misc. Concrete	ACHD Misc Concrete Repair	REPLACE	10	\$10,060
						<b>\$14,084</b>

### Fiscal Year 2009 ACHD Capital Project Pedestrian Ramps

Year	ProjectNo	ORIGIN	Project Name	Construction Type	Number of Ramps	Cost
FY 2009	305048	ACHD PROJECT	USTICK & LINDER INTERSECTION	INSTALL	20	\$20,120
FY 2009	506040	ACHD PROJECT	MERIDIAN AND MAIN SPLIT CORRIDOR-PHASE 1	INSTALL	15	\$15,090
FY 2009	506040	ACHD PROJECT	MERIDIAN AND MAIN SPLIT CORRIDOR-PHASE 1	REPLACE	21	\$21,126
FY 2009	509002 / OV209	ACHD PROJECT	2009 Overlays	INSTALL	44	\$44,264
FY 2009	509002 / OV209	ACHD PROJECT	2009 Overlays	REPLACE	53	\$53,318
FY 2009	60079	ACHD PROJECT	EAST PARKCENTER BRIDGE	REPLACE	8	\$8,048
FY 2009	60079//MA203-02	ACHD PROJECT	EAST PARKCENTER BRIDGE	INSTALL	4	\$4,024
FY 2009	607003.011	ACHD PROJECT	LEADVILLE AVE (BOISE - WILLIAMS)	INSTALL	5	\$5,030
FY 2009	607003.011	ACHD PROJECT	LEADVILLE AVE (BOISE - WILLIAMS)	REPLACE	1	\$1,006
FY 2009	806026.001	ACHD PROJECT	LINDER RD (2ND - KENTER)	INSTALL	6	\$6,036
FY 2009	806026.003	ACHD PROJECT	4th ST (SCHOOL-LINDER PED)	INSTALL	11	\$11,066
FY 2009	807003.003	ACHD PROJECT	32ND ST (GRACE - DEWEY)	INSTALL	4	\$4,024
FY 2009	807003.009	ACHD PROJECT	LEWIS ST (SW CORNER WALNUT & LEWIS)	INSTALL	2	\$2,012
FY 2009	807003.009	ACHD PROJECT	LEWIS ST (SW CORNER WALNUT & LEWIS)	REPLACE	1	\$1,006

<sup>2</sup> Cost estimates for pedestrian ramps based on ACHD's average cost of \$1006 per pedestrian ramp in FY 2009.



FY 2009	STP-0003(203)	ACHD PROJECT	2009 Overlays	INSTALL	8	\$8,048
						<b>\$204,218</b>

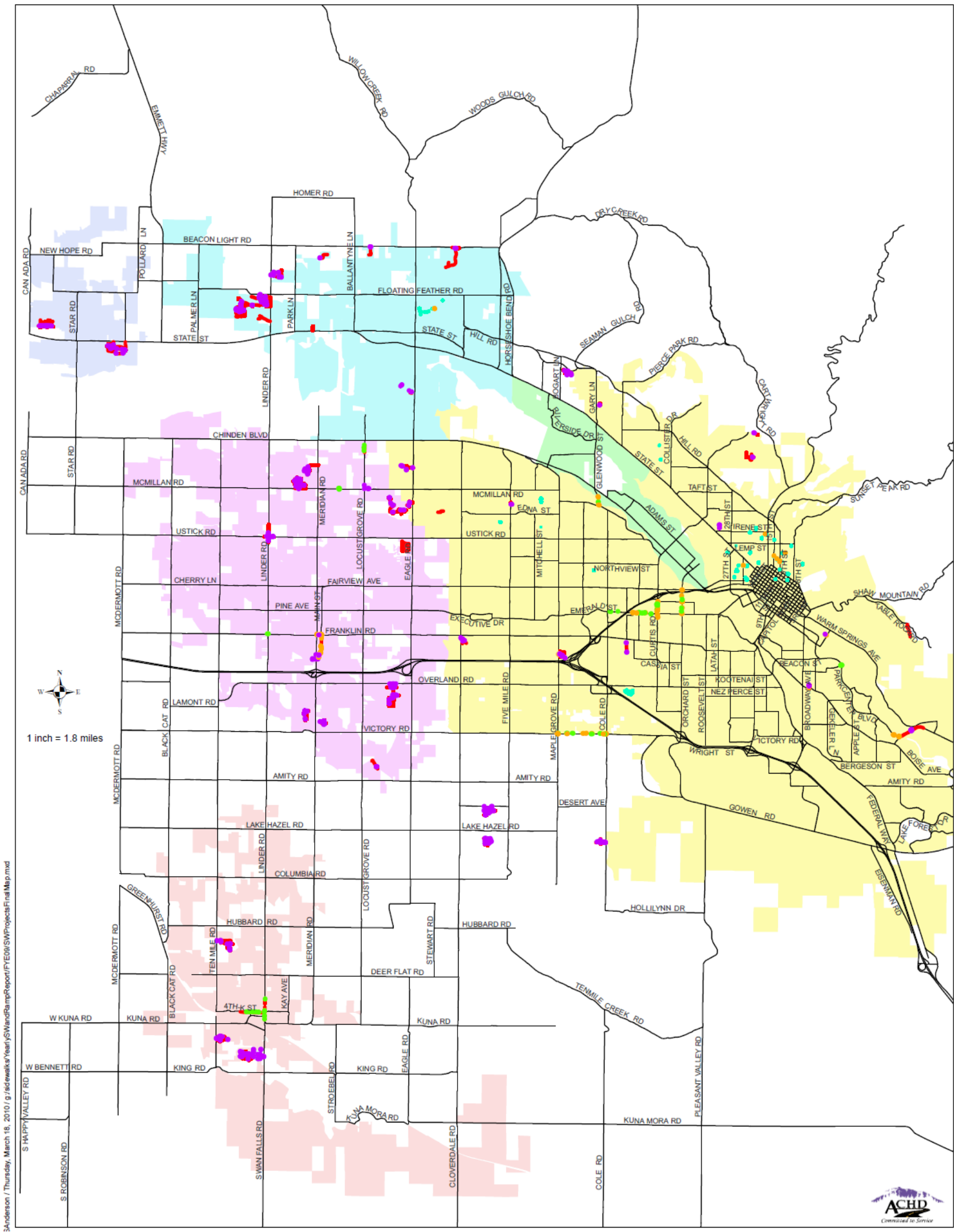
**Fiscal Year 2009 Subdivision Pedestrian Ramps**

Year	ProjectNo	ORIGIN	Project Name	Construction Type	Number of Ramps	Cost
FY 2009	109096462	SUBDIVISION	ANGORA	INSTALL	2	\$2,012
FY 2009	107125435	SUBDIVISION	BELLATERRA	INSTALL	14	\$14,084
FY 2009	108118705	SUBDIVISION	BELLINGHAM NO3	INSTALL	4	\$4,024
FY 2009	108054317	SUBDIVISION	BITTERBRUSH PNT	INSTALL	9	\$9,054
FY 2009	109027436	SUBDIVISION	CATALPA	INSTALL	2	\$2,012
FY 2009	108025323	SUBDIVISION	CEDARCREEK	INSTALL	18	\$18,108
FY 2009	108070831	SUBDIVISION	CHATHAM TOWNE	INSTALL	2	\$2,012
FY 2009	109099720	SUBDIVISION	DUNHAM COMMONES	INSTALL	8	\$8,048
FY 2009	109086379	SUBDIVISION	ENGLEFIELD GREEN	INSTALL	4	\$4,024
FY 2009	106149968	SUBDIVISION	EYRIE CANYON	INSTALL	2	\$2,012
FY 2009	107150335	SUBDIVISION	GALIANO ESTATES	INSTALL	16	\$16,096
FY 2009	107119408	SUBDIVISION	GRAMERCY NO1	INSTALL	34	\$34,204
FY 2009	108019263	SUBDIVISION	HAZELWOOD VIL	INSTALL	20	\$20,120
FY 2009	107135238	SUBDIVISION	MILFORD CREEK	INSTALL	4	\$4,024
FY 2009	108028316	SUBDIVISION	MOSCA SECA	INSTALL	57	\$57,342
FY 2009	107146424	SUBDIVISION	PARAMOUNT NO14	INSTALL	22	\$22,132
FY 2009	106198237	SUBDIVISION	PARKSTONE NO1	INSTALL	27	\$27,162
FY 2009	108056785	SUBDIVISION	PEBBLECREEK	INSTALL	13	\$13,078
FY 2009	107011117	SUBDIVISION	PEPPERTREE	INSTALL	19	\$19,114
FY 2009	109005535	SUBDIVISION	PINETREE VILLA	INSTALL	10	\$10,060
FY 2009	107141888	SUBDIVISION	PLACERVILLE	INSTALL	14	\$14,084
FY 2009	106127829	SUBDIVISION	PONY HOLLOW	INSTALL	2	\$2,012
FY 2009	108118296	SUBDIVISION	ROXEY PLACE	INSTALL	8	\$8,048
FY 2009	108118297	SUBDIVISION	RYAN MEADOWS 3	INSTALL	22	\$22,132

FY 2009	106030313	SUBDIVISION	SADDLEBROOK	INSTALL	16	\$16,096
FY 2009	106153906	SUBDIVISION	SCHOOLHOUSE NO2	INSTALL	24	\$24,144
FY 2009	108112189	SUBDIVISION	SHEPHERD CK	INSTALL	8	\$8,048
FY 2009	107139656	SUBDIVISION	SKYLIGHT	INSTALL	10	\$10,060
FY 2009	107121417	SUBDIVISION	TANA HEIGHTS	INSTALL	2	\$2,012
FY 2009	106028185	SUBDIVISION	TWO RIVERS	INSTALL	6	\$6,036
FY 2009	108027765	SUBDIVISION	VIZCAYA	INSTALL	2	\$2,012
FY 2009	108027766	SUBDIVISION	WOODLAND SPRINGS	INSTALL	7	\$7,042
FY 2009	107148029	SUBDIVISION	ZEBULON HEIGHTS	INSTALL	12	\$12,072
FY 2009	109005535	SUBDIVISION	PINETREE SUB	REPLACE	2	\$2,012
						<b>\$424,532</b>

# Appendix C

## Location of Pedestrian Improvements



3:\Anderson / Thursday, March 18, 2010 / g:\adewalk\YearlySidewalkRampReport\FY09\SWProjectsFinalMap.mxd



- LEGEND**
- Pedestrian Ramps**
- New Ramps
  - Installed DVD
  - Replaced/Rebuilt Ramp
- Sidewalks**
- Hazardous Sidewalk Replacement
  - New Sidewalks
  - Boise River