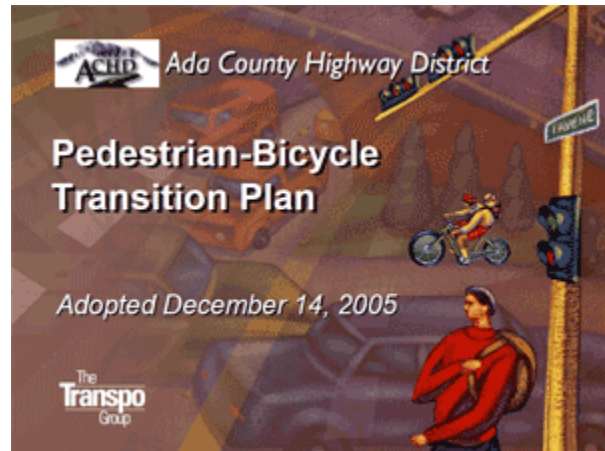


# Ada County Highway District ADA Annual Report - Fiscal Year 2011

---

## Background

On December 14, 2005 the Ada County Highway District (ACHD) Commission adopted the Pedestrian Bicycle Transition Plan (PBTP). The PBTP is intended to provide a comprehensive program to enhance the Ada County urban area pedestrian and bicycle system. This effort was initiated by ACHD, with a primary emphasis on addressing federal pedestrian planning guidelines and the regulatory requirements of the Americans with Disabilities Act (ADA), enacted on July 26, 1990.



ACHD has jurisdiction and responsibility for all public roads and streets within Ada County, Idaho, except state highways and interstate freeways. Under Idaho law, pedestrian (typically sidewalks) and bicycle system components of most public streets also fall within ACHD's jurisdiction.

The ADA provides comprehensive civil rights protections to persons with disabilities in the areas of employment, state and local government services, and access to public accommodations, transportation, telecommunications and other public facilities, including sidewalks.

There are five statutory titles to the ADA; Title II is of most concern to ACHD. The PBTP is intended to accommodate the most recent ADA policies and rules. Title II of the ADA prohibits state and local governments from discriminating against persons with disabilities by requiring them to make all programs, services, and activities accessible to persons with disabilities. Title II requires a public entity to evaluate its services, programs, policies, practices, and facilities to determine whether they are in compliance with the nondiscrimination requirements of the ADA.

The ADA requires that a transition plan be prepared, to describe any structural or physical changes required to make programs accessible. The transition plan outlines the methods by which physical or structural changes will be made to effect the nondiscrimination policies described in Title II.

Commensurate with the ADA requirements for inventory and self-evaluation, ACHD targeted a significant portion of the overall planning effort to complete a walking inventory of the entire, street-side pedestrian system within the Ada County urban areas.

In 2004-2005 more than 2,800 miles of existing and missing sidewalks and 19,300 street corners (with 15,500 curb ramps) were inventoried and assessed as part of ACHD's self-evaluation. Documenting the location, type and condition of sidewalks and curb ramps is an important step in the pedestrian planning

effort. A full inventory of missing sidewalks helps identify the critical “gaps” to fill. ACHD successfully completed a thorough inventory of the pedestrian system as the basis of the PBTP planning effort.

In addition to establishing the baseline data set, ACHD established standard operating procedures to ensure that the GIS database for sidewalk and curb ramps remains current as new facilities are installed and substandard facilities are repaired.

## Purpose

Since the adoption of the PBTP, ACHD has worked diligently to plan, develop and construct improvements to the pedestrian system that bring the sidewalks and curb ramps in Ada County into compliance with ADA. The purpose of this Annual Report is to describe the improvements to the pedestrian system that occurred in fiscal year 2011. Each fiscal year, ACHD catalogs the new improvements, which are added to ACHD’s comprehensive pedestrian facility database system.

## New Facilities

ACHD is constantly expanding the length of sidewalks and number of curb ramps in Ada County and its six cities. The new sidewalks and curb ramps are primarily constructed through one of the following programs or activities:

- Large scale ACHD “Capital Projects” such as roadway expansion, and overlays;
- Smaller scale ACHD “Community Programs Projects” such as sidewalk construction, safe routes to school projects, and curb ramps;
- Residential and commercial subdivisions;
- Miscellaneous commercial and residential building permits (not captured in the FY 2009 inventory due to data constraints),



ACHD expends significant amounts of federal and local funds to construct new improvements to the pedestrian system each fiscal year. In addition to sidewalks and curb ramps that are constructed with ACHD Capital Projects (i.e. roadway widening and overlays), the ACHD Commission has dedicated five percent of ACHD’s annual capital budget to pedestrian specific projects (not associated with a specific roadway project). In 2009 Ada County voters approved an increase in vehicle registration fees to fund pedestrian projects near schools. These efforts by ACHD significantly exceed the Federal Highway Administration (FHWA)’s Safe Routes to School Program, which makes federal funding available through grants. ACHD applies for federal grants, but has historically been a leader in locally funded safe routes to school improvements.

In addition, private development through subdivisions and new development also contributes to the expansion of ACHD’s pedestrian network. ACHD works closely with developers to ensure that the pedestrian facilities constructed with private funds are ADA compliant. ACHD inspector’s visually inspect and sign off on all improvements in the public right-of-prior to official acceptance of the improvements.

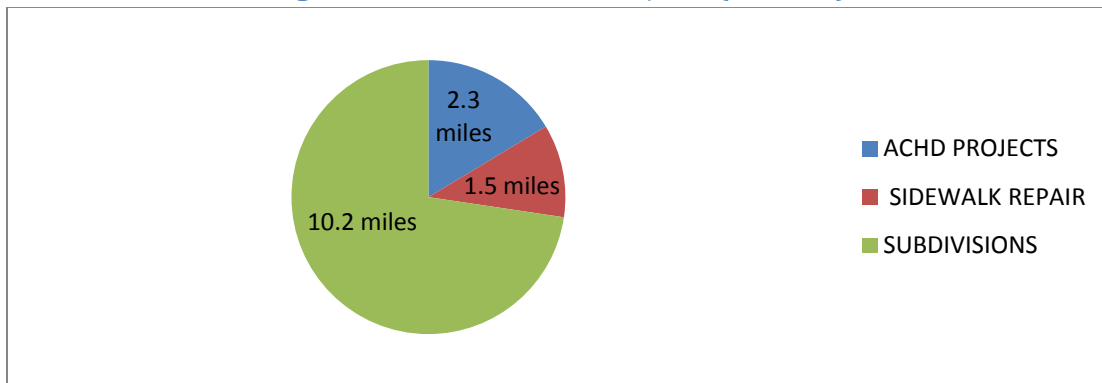
### Facility Maintenance

ACHD also has a Sidewalk Repair Program that focuses on repairing or reconstructing substandard sidewalks and curb ramps. Historically the sidewalk repair program has focused on repairing sidewalk and curb ramps based on citizen concerns/requests. In coming years ACHD anticipates a more proactive and programmatic approach to repairing and replacing substandard pedestrian facilities.

### Fiscal Year 2011 System Improvements

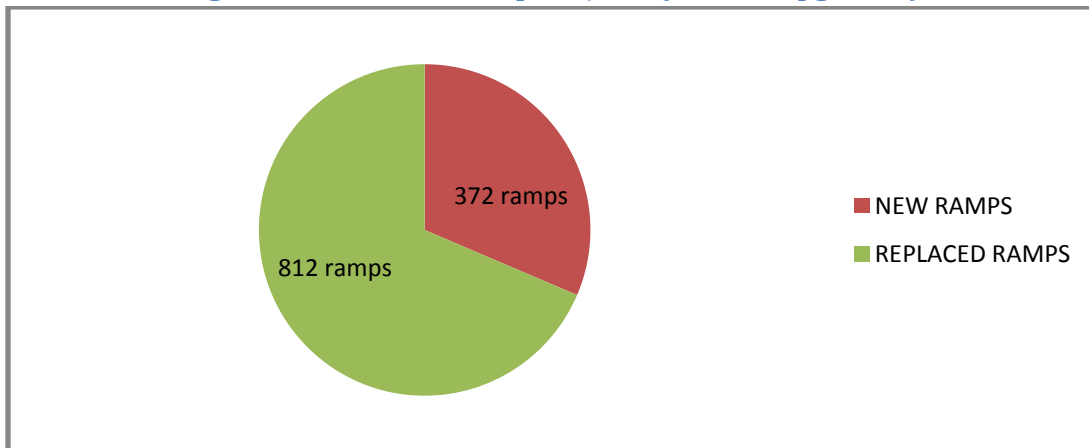
In fiscal year 2011, ACHD and private development installed over 12.5 miles of new sidewalks in Ada County. In addition to the new sidewalks, ACHD repaired 1.5 miles of substandard sidewalks. Figure 1 below illustrates the total mileage of new and repaired sidewalk for fiscal year 2011. The total estimated investment in new and repaired sidewalks projects for fiscal year 2011 is close to \$2.2 million. (Further project details and cost estimates are described in Appendix A and map of project locations is shown in Appendix B).

**Figure 1. 2011 Sidewalk Projects (in miles)**



During same time period, ACHD and private development installed 372 new pedestrian ramps across Ada County. ACHD through its maintenance activities and sidewalk repair program replaced or upgraded an additional 812 pedestrian ramps to bring them into compliance with current ADA standards. The total estimated investment in new and repaired/replaced curb ramps for fiscal year 2011 is \$2.3 million.

**Figure 2. 2011 Curb Ramp Projects (corners upgraded)**



## Appendix A

### Fiscal Year 2011 Sidewalk Repair Projects

DATE	WIDTH	Project Origin	Project Name	Length	Estimated Cost <sup>1</sup>	City
FY 2011	5	Sidewalk Repair	Hazardous Sidewalk	15	\$450	MERIDIAN
FY 2011	5	Sidewalk Repair	Hazardous Sidewalk	271	\$8,133	BOISE
FY 2011	5	Sidewalk Repair	Hazardous Sidewalk	259	\$7,756	BOISE
FY 2011	5	Sidewalk Repair	Crestwood	6	\$180	MERIDIAN
FY 2011	5	Sidewalk Repair	Crestwood	7	\$210	MERIDIAN
FY 2011	5	Sidewalk Repair	Crestwood	17	\$510	MERIDIAN
FY 2011	5	Sidewalk Repair	Crestwood	13	\$390	MERIDIAN
FY 2011	5	Sidewalk Repair	Crestwood	3	\$90	MERIDIAN
FY 2011	5	Sidewalk Repair	Crestwood	9	\$270	MERIDIAN
FY 2011	5	Sidewalk Repair	Crestwood	12	\$360	MERIDIAN
FY 2011	5	Sidewalk Repair	Crestwood	16	\$473	MERIDIAN
FY 2011	5	Sidewalk Repair	Crestwood	14	\$420	MERIDIAN
FY 2011	5	Sidewalk Repair	Todd	10	\$300	MERIDIAN
FY 2011	5	Sidewalk Repair	Todd	21	\$630	MERIDIAN
FY 2011	5	Sidewalk Repair	2017 meadow creek dr.	35	\$1,062	MERIDIAN
FY 2011	5	Sidewalk Repair	2035 summerdawn dr.	54	\$1,607	MERIDIAN
FY 2011	5	Sidewalk Repair	Adams Utility WO# 7117	185	\$5,558	BOISE
FY 2011	4	Sidewalk Repair	CAPITAL MANOR	2280	\$68,400	BOISE
FY 2011	4	Sidewalk Repair	Exhibit A HAZARDOUS SIDEWALK	963	\$28,890	BOISE

<sup>1</sup> Cost estimate based on ACHD average cost of \$30 per lineal foot for new sidewalk constructed during FY 2011. This cost includes excavation and base material.

FY 2011	5	Sidewalk Repair	Hazardous Sidewalk	14	\$408	BOISE
FY 2011	5	Sidewalk Repair	Misc Hazardous Sidewalk	1941	\$58,230	BOISE
FY 2011	15	Sidewalk Repair	MERIDIAN	14	\$420	MERIDIAN
FY 2011	6	Sidewalk Repair	NORTH END HAZARDOUS SIDEWALK	1484	\$44,520	BOISE
FY 2011	4	Sidewalk Repair	Reclamation Road Ped Ramp	65	\$1,943	BOISE
FY 2011	5	Sidewalk Repair	NORTH END HAZARDOUS SIDEWALK	47	\$1,421	BOISE
FY 2011	5	Sidewalk Repair	MD 85	74	\$2,229	BOISE
FY 2011	5	Sidewalk Repair	MD 85	77	\$2,300	BOISE
FY 2011	5	Sidewalk Repair	Developer Coop	104	\$3,110	ADA COUNTY
FY 2011	5	Sidewalk Repair	Developer Coop	0	\$0	MERIDIAN
FY 2011	5	Sidewalk Repair	Adams Utilty WO# 7117	45	\$1,365	BOISE
				Total	\$241,633	

### Fiscal Year 2011 ACHD Sidewalk Projects

DATE	WIDTH	Project Number	Project Origin	Project Name	Length	Estimated Cost	City
FY 2011	5	811003.014	ACHD Project	Carlton Ave., W. 8th to W. 4th	945	\$28,351	MERIDIAN
FY 2011	5	811003.014		Carlton Ave., W. 8th to W. 4th	248	\$7,450	MERIDIAN
FY 2011	5	811003.014		Carlton Ave., W. 8th to W. 4th	466	\$13,993	MERIDIAN
FY 2011	5	811003.011		Duncan & Ben Ped Crossing	38	\$1,147	ADA COUNTY
FY 2011	5	811003.011		Duncan & Ben Ped. Crossing	42	\$1,267	ADA COUNTY
FY 2011	7	IN205-102		FAIRVIEW & FIVE MILE INTERSECTION	272	\$8,161	BOISE
FY 2011	7	IN205-102		FAIRVIEW & FIVE MILE INTERSECTION	342	\$10,266	BOISE
FY 2011	7	IN205-102		FAIRVIEW & FIVE MILE INTERSECTION	57	\$1,703	BOISE
FY 2011	7	IN205-102		FAIRVIEW & FIVE MILE INTERSECTION	28	\$828	BOISE
FY 2011	7	IN205-102		FAIRVIEW & FIVE MILE INTERSECTION	49	\$1,465	BOISE
FY 2011	7	IN205-102		FAIRVIEW & FIVE MILE INTERSECTION	210	\$6,296	BOISE
FY 2011	7	IN205-102		FAIRVIEW & FIVE MILE INTERSECTION	174	\$5,220	BOISE
FY 2011	5	IN205-102		FAIRVIEW & FIVE MILE INTERSECTION	238	\$7,147	BOISE

FY 2011	5	IN205-102		FAIRVIEW & FIVE MILE INTERSECTION	91	\$2,717	BOISE
FY 2011	5	IN205-102		FAIRVIEW & FIVE MILE INTERSECTION	108	\$3,248	BOISE
FY 2011	5	IN205-102		FAIRVIEW & FIVE MILE INTERSECTION	109	\$3,276	BOISE
FY 2011	5	IN205-102		FAIRVIEW & FIVE MILE INTERSECTION	135	\$4,064	BOISE
FY 2011	5	IN205-102		FAIRVIEW & FIVE MILE INTERSECTION	59	\$1,757	BOISE
FY 2011	5	IN205-102		FAIRVIEW & FIVE MILE INTERSECTION	124	\$3,720	BOISE
FY 2011	5	IN205-102		FAIRVIEW & FIVE MILE INTERSECTION	123	\$3,704	BOISE
FY 2011	5	IN205-102		FAIRVIEW & FIVE MILE INTERSECTION	159	\$4,779	BOISE
FY 2011	5	IN205-102		FAIRVIEW & FIVE MILE INTERSECTION	167	\$5,016	BOISE
FY 2011	5	IN205-102		FAIRVIEW & FIVE MILE INTERSECTION	241	\$7,240	BOISE
FY 2011	5	IN205-102		FAIRVIEW & FIVE MILE INTERSECTION	64	\$1,906	BOISE
FY 2011	5	IN205-102		FAIRVIEW & FIVE MILE INTERSECTION	76	\$2,291	BOISE
FY 2011	5	IN205-102		FAIRVIEW & FIVE MILE INTERSECTION	54	\$1,627	BOISE
FY 2011	5	IN205-102		FAIRVIEW & FIVE MILE INTERSECTION	47	\$1,421	BOISE
FY 2011	5	IN205-102		FAIRVIEW & FIVE MILE INTERSECTION	31	\$937	BOISE
FY 2011	5	811003.003		Fairview, Milwaukee to Maple Grove	129	\$3,861	BOISE
FY 2011	5	811003.003		Fairview. Milwaukee/Maple Grove	64	\$1,925	BOISE
FY 2011	5	811003.003		Fairview. Milwaukee/Maple Grove	61	\$1,825	BOISE
FY 2011	5	811003.003		Fairview. Milwaukee/Maple Grove	22	\$651	BOISE
FY 2011	5	809024.007		GARRET, MARIGOLD TO CHELAN	21	\$637	GARDEN CITY
FY 2011	5	809024.007		GARRETT, MARIGOLD TO CHELAN	60	\$1,806	GARDEN CITY
FY 2011	5	809024.007		GARRETT, MARIGOLD TO CHELAN	174	\$5,213	GARDEN CITY
FY 2011	5	811003.010		Irving, SE & NW of Maple Grove	76	\$2,289	BOISE
FY 2011	5	811003.010		Irving, SE & NW of Maple Grove	63	\$1,879	BOISE
FY 2011	5	811003.010		Irving, SE & NW of Maple Grove	179	\$5,379	BOISE
FY 2011	5	811003.010		Irving, SE & NW of Maple Grove Sidewalks	87	\$2,598	BOISE
FY 2011		811003.008		Meridian Rd., Heritage Middle School to Quintessa	558	\$16,753	MERIDIAN
FY 2011	5	811004.009		Milwaukee, King/Wesley	202	\$6,068	BOISE
FY 2011	5	811004.009		Milwaukee, King/Wesley	792	\$23,758	BOISE
FY 2011	5	811004.009		Milwaukee, King/Wesley	204	\$6,107	BOISE

FY 2011	5	#810013.010		Pennsylvania, Boise to ParkCenter	129	\$3,861	BOISE
FY 2011	5	#810013.010		Pennsylvania, Boise to ParkCenter	362	\$10,864	BOISE
FY 2011	5	#810013.010		Pennsylvania, Boise to ParkCenter	24	\$729	BOISE
FY 2011	5	#810013.010		Pennsylvania, Boise to ParkCenter	111	\$3,344	BOISE
FY 2011	5	#810013.010		Pennsylvania, Boise to ParkCenter	47	\$1,406	BOISE
FY 2011	5	#810013.010		Pennsylvania, Boise to ParkCenter	77	\$2,301	BOISE
FY 2011	5	#810013.010		Pennsylvania, Boise to ParkCenter	65	\$1,942	BOISE
FY 2011	5	811003.012		Pennsylvania, Broadway to Longmont	116	\$3,491	BOISE
FY 2011	5	811003.012		Pennsylvania, Broadway to Longmont	32	\$963	BOISE
FY 2011	5	809024.009		Roosevelt, Cassia to Rose Hill	15	\$452	BOISE
FY 2011	5'	809024.009		Roosevelt, Cassia to Rose Hill	968	\$29,037	BOISE
FY 2011	7	307012		SH44/State St/Ballantyne Realignment	1155	\$34,655	EAGLE
FY 2011	7	307012		SH44/State St/Ballantyne Realignment	85	\$2,540	EAGLE
FY 2011	7	307012		SH44/State St/Ballantyne Realignment	339	\$10,184	EAGLE
FY 2011	7	307012		SH44/State St/Ballantyne Realignment	27	\$813	EAGLE
FY 2011	7	307012		SH44/State St/Ballantyne Realignment	267	\$8,005	EAGLE
FY 2011	7	307012		SH44/State St/Ballantyne Realignment	179	\$5,355	EAGLE
FY 2011	5	810013.014		Ustick, Nieman to Thames	778	\$23,336	MERIDIAN
FY 2011	5	#810013.010		Pennsylvania, Boise to ParkCenter	66	\$1,970	BOISE
				Totals		\$366,996	

### Fiscal Year 2011 Subdivision – Sidewalks

DATE	WIDTH	Project Origin	Project Name	Length	Estimated Cost	City
FY 2011	5	Subdivision	AFTONS FIRST	956	\$28,677	BOISE
FY 2011	5	Subdivision	BRIDGETOWER CROSSING NO 16	1044	\$31,327	MERIDIAN
FY 2011	5	Subdivision	BRIDGETOWER CROSSING NO 16	1173	\$35,201	MERIDIAN
FY 2011	5	Subdivision	BRIDGETOWER CROSSING NO 16	166	\$4,980	MERIDIAN
FY 2011	5	Subdivision	BRIDGETOWER CROSSING NO 16	1087	\$32,605	MERIDIAN

FY 2011	5	Subdivision	BRIDGETOWER CROSSING NO 16	353	\$10,595	MERIDIAN
FY 2011	5	Subdivision	BRIDGETOWER CROSSING NO 16	159	\$4,775	MERIDIAN
FY 2011	5	Subdivision	BRIDGETOWER CROSSING NO 16	348	\$10,440	MERIDIAN
FY 2011	5	Subdivision	BRIDGETOWER CROSSING NO 16	1471	\$44,123	MERIDIAN
FY 2011	6	Subdivision	Dallas Harris Estates Boise City Fire Station No. 15	183	\$5,500	BOISE
FY 2011	6	Subdivision	Dallas Harris Estates Boise City Fire Station No. 15	235	\$7,063	BOISE
FY 2011	6	Subdivision	Dallas Harris Estates Boise City Fire Station No. 15	29	\$878	BOISE
FY 2011	5	Subdivision	Dallas Harris Estates No 01	913	\$27,394	BOISE
FY 2011	5	Subdivision	Dallas Harris Estates No 01	503	\$15,089	BOISE
FY 2011	5	Subdivision	Dallas Harris Estates No 01	530	\$15,895	BOISE
FY 2011	5	Subdivision	Dallas Harris Estates No 01	88	\$2,632	BOISE
FY 2011	5	Subdivision	Dallas Harris Estates No 01	203	\$6,078	BOISE
FY 2011	5	Subdivision	Dallas Harris Estates No 02	382	\$11,467	BOISE
FY 2011	5	Subdivision	Dallas Harris Estates No 02	219	\$6,562	BOISE
FY 2011	5	Subdivision	Dallas Harris Estates No 02	794	\$23,833	BOISE
FY 2011	5	Subdivision	Dallas Harris Estates No 02	399	\$11,977	BOISE
FY 2011	5	Subdivision	Dallas Harris Estates No 02	130	\$3,901	BOISE
FY 2011	5	Subdivision	EAGLESONS BEATTY SUB AMD	114	\$3,425	BOISE
FY 2011	5	Subdivision	EAGLESONS BEATTY SUB AMD	201	\$6,016	BOISE
FY 2011	5	Subdivision	EAGLESONS BEATTY SUB AMD	68	\$2,044	BOISE
FY 2011	5	Subdivision	FARCEL FIVE TWELVE	36	\$1,092	MERIDIAN
FY 2011	5	Subdivision	FARCEL FIVE TWELVE	37	\$1,113	MERIDIAN
FY 2011	5	Subdivision	FARCEL FIVE TWELVE	712	\$21,357	MERIDIAN
FY 2011	5	Subdivision	HAZELWOOD VILLAGE NO 03	531	\$15,934	ADA COUNTY
FY 2011	5	Subdivision	HAZELWOOD VILLAGE NO 03	240	\$7,186	ADA COUNTY
FY 2011	5	Subdivision	HAZELWOOD VILLAGE NO 03	508	\$15,227	ADA COUNTY
FY 2011	5	Subdivision	HAZELWOOD VILLAGE NO 03	93	\$2,792	ADA COUNTY
FY 2011	5	Subdivision	HAZELWOOD VILLAGE NO 03	112	\$3,364	ADA COUNTY
FY 2011	5	Subdivision	JAYKER PHASE 01	320	\$9,600	MERIDIAN
FY 2011	5	Subdivision	JAYKER PHASE 01	319	\$9,568	MERIDIAN



FY 2011	5	Subdivision	JAYKER PHASE 01	206	\$6,179	MERIDIAN
FY 2011	5	Subdivision	JAYKER PHASE 01	238	\$7,143	MERIDIAN
FY 2011	5	Subdivision	JAYKER PHASE 01	504	\$15,116	MERIDIAN
FY 2011	5	Subdivision	JAYKER PHASE 01	625	\$18,748	MERIDIAN
FY 2011	5	Subdivision	JAYKER PHASE 01	378	\$11,328	MERIDIAN
FY 2011	5	Subdivision	JAYKER PHASE 01	501	\$15,028	MERIDIAN
FY 2011	5	Subdivision	JAYKER PHASE 01	481	\$14,425	MERIDIAN
FY 2011	5	Subdivision	JAYKER PHASE 01	341	\$10,231	MERIDIAN
FY 2011	5	Subdivision	JAYKER PHASE 01	555	\$16,656	MERIDIAN
FY 2011	5	Subdivision	JAYKER PHASE 01	972	\$29,161	MERIDIAN
FY 2011	5	Subdivision	JAYKER PHASE 01	136	\$4,068	MERIDIAN
FY 2011	5	Subdivision	JAYKER PHASE 01	523	\$15,680	MERIDIAN
FY 2011	5	Subdivision	JAYKER PHASE 01	1027	\$30,797	MERIDIAN
FY 2011	5	Subdivision	JAYKER PHASE 01	1018	\$30,541	MERIDIAN
FY 2011	5	Subdivision	JAYKER PHASE 01	608	\$18,254	MERIDIAN
FY 2011	5	Subdivision	JAYKER PHASE 01	998	\$29,928	MERIDIAN
FY 2011	5	Subdivision	JAYKER PHASE 01	55	\$1,643	MERIDIAN
FY 2011	5	Subdivision	JAYKER PHASE 01	2117	\$63,524	MERIDIAN
FY 2011	5	Subdivision	JAYKER PHASE 01	140	\$4,188	MERIDIAN
FY 2011	5	Subdivision	JAYKER PHASE 01	388	\$11,646	MERIDIAN
FY 2011	5	Subdivision	JAYKER PHASE 01	653	\$19,578	MERIDIAN
FY 2011	5	Subdivision	JAYKER PHASE 01	163	\$4,886	MERIDIAN
FY 2011	5	Subdivision	JAYKER PHASE 01	377	\$11,296	MERIDIAN
FY 2011	5	Subdivision	JAYKER PHASE 01	611	\$18,341	MERIDIAN
FY 2011	5	Subdivision	JAYKER PHASE 01	625	\$18,741	MERIDIAN
FY 2011	5	Subdivision	JAYKER PHASE 01	1092	\$32,765	MERIDIAN
FY 2011	5	Subdivision	JAYKER PHASE 01	244	\$7,322	MERIDIAN
FY 2011	5	Subdivision	JAYKER PHASE 01	117	\$3,509	MERIDIAN
FY 2011	5	Subdivision	JAYKER PHASE 01	229	\$6,864	MERIDIAN
FY 2011	5	Subdivision	JAYKER PHASE 01	1135	\$34,040	MERIDIAN

FY 2011	5	Subdivision	JAYKER PHASE 01	72	\$2,166	MERIDIAN
FY 2011	5	Subdivision	JAYKER PHASE 01	75	\$2,257	MERIDIAN
FY 2011	5	Subdivision	JAYKER PHASE 01	195	\$5,860	MERIDIAN
FY 2011	5	Subdivision	JAYKER PHASE 01	202	\$6,058	MERIDIAN
FY 2011	5	Subdivision	JAYKER PHASE 01	254	\$7,635	MERIDIAN
FY 2011	5	Subdivision	JAYKER PHASE 01	1003	\$30,099	MERIDIAN
FY 2011	5	Subdivision	JAYKER PHASE 01	287	\$8,620	MERIDIAN
FY 2011	5	Subdivision	JAYKER PHASE 01	1319	\$39,567	MERIDIAN
FY 2011	5	Subdivision	JAYKER PHASE 01	337	\$10,123	MERIDIAN
FY 2011	5	Subdivision	JAYKER PHASE 01	225	\$6,744	MERIDIAN
FY 2011	5	Subdivision	JAYKER PHASE 01	527	\$15,796	MERIDIAN
FY 2011	5	Subdivision	JAYKER PHASE 01	190	\$5,691	MERIDIAN
FY 2011	5	Subdivision	JAYKER PHASE 01	203	\$6,079	MERIDIAN
FY 2011	5	Subdivision	JAYKER PHASE 01	20	\$603	MERIDIAN
FY 2011	5	Subdivision	JAYKER PHASE 01	264	\$7,926	MERIDIAN
FY 2011	5	Subdivision	JAYKER PHASE 01	398	\$11,943	MERIDIAN
FY 2011	5	Subdivision	JAYKER PHASE 01	660	\$19,787	MERIDIAN
FY 2011	5	Subdivision	JAYKER PHASE 01	464	\$13,910	MERIDIAN
FY 2011	5	Subdivision	JAYKER PHASE 01	374	\$11,229	MERIDIAN
FY 2011	5	Subdivision	JAYKER PHASE 01	404	\$12,120	MERIDIAN
FY 2011	5	Subdivision	ROCKBRIDGE PHASE 07	313	\$9,405	STAR
FY 2011	5	Subdivision	ROCKBRIDGE PHASE 07	956	\$28,669	STAR
FY 2011	5	Subdivision	ROCKBRIDGE PHASE 07	1594	\$47,819	STAR
FY 2011	5	Subdivision	ROCKBRIDGE PHASE 07	486	\$14,568	STAR
FY 2011	5	Subdivision	ROCKBRIDGE PHASE 07	499	\$14,968	STAR
FY 2011	5	Subdivision	ROCKBRIDGE PHASE 07	171	\$5,141	STAR
FY 2011	5	Subdivision	ROCKBRIDGE PHASE 07	87	\$2,603	STAR
FY 2011	5	Subdivision	ROCKBRIDGE PHASE 07	178	\$5,337	STAR
FY 2011	5	Subdivision	Settlement Bridge Subdivision No. 6	514	\$15,408	MERIDIAN
FY 2011	5	Subdivision	Settlement Bridge Subdivision No. 6	852	\$25,549	MERIDIAN

FY 2011	5	Subdivision	Settlement Bridge Subdivision No. 6	972	\$29,160	MERIDIAN
FY 2011	5	Subdivision	Shores Phase 01 The	1065	\$31,942	EAGLE
FY 2011	5	Subdivision	SOLAIRE	140	\$4,214	BOISE
FY 2011	5	Subdivision	SOLAIRE	45	\$1,365	BOISE
FY 2011	5	Subdivision	Solaire	812	\$24,364	BOISE
FY 2011	5	Subdivision	Solaire	1438	\$43,126	BOISE
FY 2011	5	Subdivision	WILSON SUB TO KUNA	20	\$588	KUNA
FY 2011	5	Subdivision	WILSON SUB TO KUNA	106	\$3,174	KUNA
FY 2011	5	Subdivision	ZATICA NO 02	87	\$2,606	KUNA
FY 2011	5	Subdivision	ZATICA NO 02	123	\$3,675	KUNA
FY 2011	5	Subdivision	ZATICA NO 02	265	\$7,951	KUNA
FY 2011	5	Subdivision	ZATICA NO 02	167	\$5,013	KUNA
FY 2011	5	Subdivision	ZEBULON HEIGHTS NO 03	8	\$245	ADA COUNTY
FY 2011	5	Subdivision	ZEBULON HEIGHTS NO 03	351	\$10,529	MERIDIAN
FY 2011	5	Subdivision	ZEBULON HEIGHTS NO 03	901	\$27,027	MERIDIAN
FY 2011	5	Subdivision	ZEBULON HEIGHTS NO 03	892	\$26,751	MERIDIAN
FY 2011	5	Subdivision	ZEBULON HEIGHTS NO 03	383	\$11,478	MERIDIAN
FY 2011	5	Subdivision	ZEBULON HEIGHTS NO 03	246	\$7,371	MERIDIAN
FY 2011	5	Subdivision	ZEBULON HEIGHTS NO 03	209	\$6,280	MERIDIAN
FY 2011	6	Subdivision	THE SHOPPES AT HILLCREST	493	\$14,779	BOISE
FY 2011	6	Subdivision	THE SHOPPES AT HILLCREST	305	\$9,147	BOISE
				Totals	\$1,615,803	

## Appendix B

### Fiscal Year 2011 Sidewalk Repair Pedestrian Ramps

Year	Origin	Project Name	Number of Ramps	Construction Type	Estimated Cost <sup>2</sup>
FY2011	Sidewalk Repair	Bridgetower Crossing No 16	12	New Ramp	\$24,144
FY2011	Sidewalk Repair	CAPITAL MANOR	42	Replaced Ramp	\$84,504
FY2011	Sidewalk Repair	Dallas Harris Estates No 02	50	New Ramp	\$100,600
FY2011	Sidewalk Repair	Hazardeous Sidewalk	132	Replaced Ramp	\$265,584
FY2011	Sidewalk Repair	Settlement Bridge Subdivision No. 6	2	New Ramp	\$4,024
FY2011	Sidewalk Repair	Settlement Bridge Subdivision No. 6	2	New Ramp	\$4,024
FY2011	Sidewalk Repair	THE SHOPPES AT HILLCREST	2	New Ramp	\$4,024
FY2011	Sidewalk Repair	THE SHOPPES AT HILLCREST	2	New Ramp	\$4,024
FY2011	Sidewalk Repair	811004.003	2	Replaced Ramp	\$4,024
FY2011	Sidewalk Repair	MD 84 Misc CONCRETE REPAIRS	76	New Ramp	\$152,912
FY2011	Sidewalk Repair	Meridian Haz SW Contract RFP#1	2	Replaced Ramp	\$4,024
FY2011	Sidewalk Repair	MERIDIAN HAZ SW RFP#1	2	Replaced Ramp	\$4,024
FY2011	Sidewalk Repair	MERIDIAN HZ SW FTP#2	2	Replaced Ramp	\$4,024
FY2011	Sidewalk Repair	MERIDIAN HZ SW RFP#2	2	Replaced Ramp	\$4,024
FY2011	Sidewalk Repair	NORTH END HAZARDOUS SIDEWALK	24	Replaced Ramp	\$48,288
FY2011	Sidewalk Repair	Reclamation Road Ped Ramp	48	Replaced Ramp	\$96,576
FY2011	Sidewalk Repair	MD??-Misc Concrete Repair	2	New Ramp	\$8,048
FY2011	Sidewalk Repair	MD??-Misc Concrete Repair	2	Replaced Ramp	\$4,024
FY2011	Sidewalk Repair	MD??-Misc Concrete Repair	2	Replaced Ramp	\$4,024
FY2011	Sidewalk Repair	MD??-Misc Concrete Repair	2	Replaced Ramp	\$4,024
				Total	\$828,944

<sup>2</sup> Cost estimates for pedestrian ramps based on ACHD's average cost of \$2012 per corner upgraded.

**Fiscal Year 2011 ACHD Capital Project Pedestrian Ramps**

<b>Year</b>	<b>Project Number</b>	<b>Origin</b>	<b>Project Name</b>	<b>Number of Ramps</b>	<b>Construction Type</b>	<b>Estimated Cost</b>
FY 2011	P32-002	ACHD Project	2011 CORE XWALK-RAMP	32	Replaced Ramp	\$64,384
FY 2011	501111 - OV211	ACHD Project	2011 LOCAL OVERLAYS	234	Replaced Ramp	\$470,808
FY 2011	811003.018	ACHD Project	2011 VRF SCHL XWALKS	84	Replaced Ramp	\$169,008
FY 2011	809024.009	ACHD Project	Roosevelt, Cassia to Rose Hill Ped Improvements	24	New Ramp	\$48,288
FY 2011	811003.010	ACHD Project	Irving, SE & NW of Maple Grove Sidewalks	2	New Ramp	\$4,024
FY 2011	811003.012	ACHD Project	Pennsylvania, Broadway to Longmont	2	New Ramp	\$4,024
FY 2011	811003.004	ACHD Project	Boise@Utter	2	Replaced Ramp	\$4,024
FY 2011	811003.004	ACHD Project	Boise@Utter	2	Replaced Ramp	\$4,024
FY 2011	811003.014	ACHD Project	Carlton 8th to 4th	2	New Ramp	\$4,024
FY 2011	811003.014	ACHD Project	Carlton 8th to 4th	2	New Ramp	\$4,024
FY 2011	811003.014	ACHD Project	Carlton 8th to 4th	2	New Ramp	\$4,024
FY 2011	811003.014	ACHD Project	Carlton 8th to 4th	2	New Ramp	\$4,024
FY 2011	811003.014	ACHD Project	Carlton 8th to 4th	2	New Ramp	\$4,024
FY 2011	811003.024	ACHD Project	CloverdaleHollandale	2	Replaced Ramp	\$4,024
FY 2011	811003.024	ACHD Project	CloverdaleHollandale	2	Replaced Ramp	\$4,024
FY 2011	WILSON SUB TO KUNA	ACHD Project	COMMERCIAL SUB	2	New Ramp	\$4,024
FY 2011	WILSON SUB TO KUNA	ACHD Project	COMMERCIAL SUB	2	New Ramp	\$4,024
FY 2011	WILSON SUB TO KUNA	ACHD Project	COMMERCIAL SUB	2	New Ramp	\$4,024
FY 2011	WILSON SUB TO KUNA	ACHD Project	COMMERCIAL SUB	2	New Ramp	\$4,024
FY 2011	809024.007	ACHD Project	GARRETT/MARIGOLD/CHE	2	Replaced Ramp	\$4,024
FY 2011	IN205-102	ACHD Project	FAIRVIEW & FIVE MILE INTERSECTION	72	Replaced Ramp	\$144,864
FY 2011	811004.003	ACHD Project	JEFFERSON/MCKINLEY/F	18	Replaced Ramp	\$36,216
FY 2011	811003.023	ACHD Project	LakeHazelLowland	2	Replaced Ramp	\$4,024
FY 2011	811003.023	ACHD Project	LakeHazelLowland	2	Replaced Ramp	\$4,024
FY 2011	809028.011	ACHD Project	MapleGroveIrvingPed	2	Replaced Ramp	\$4,024

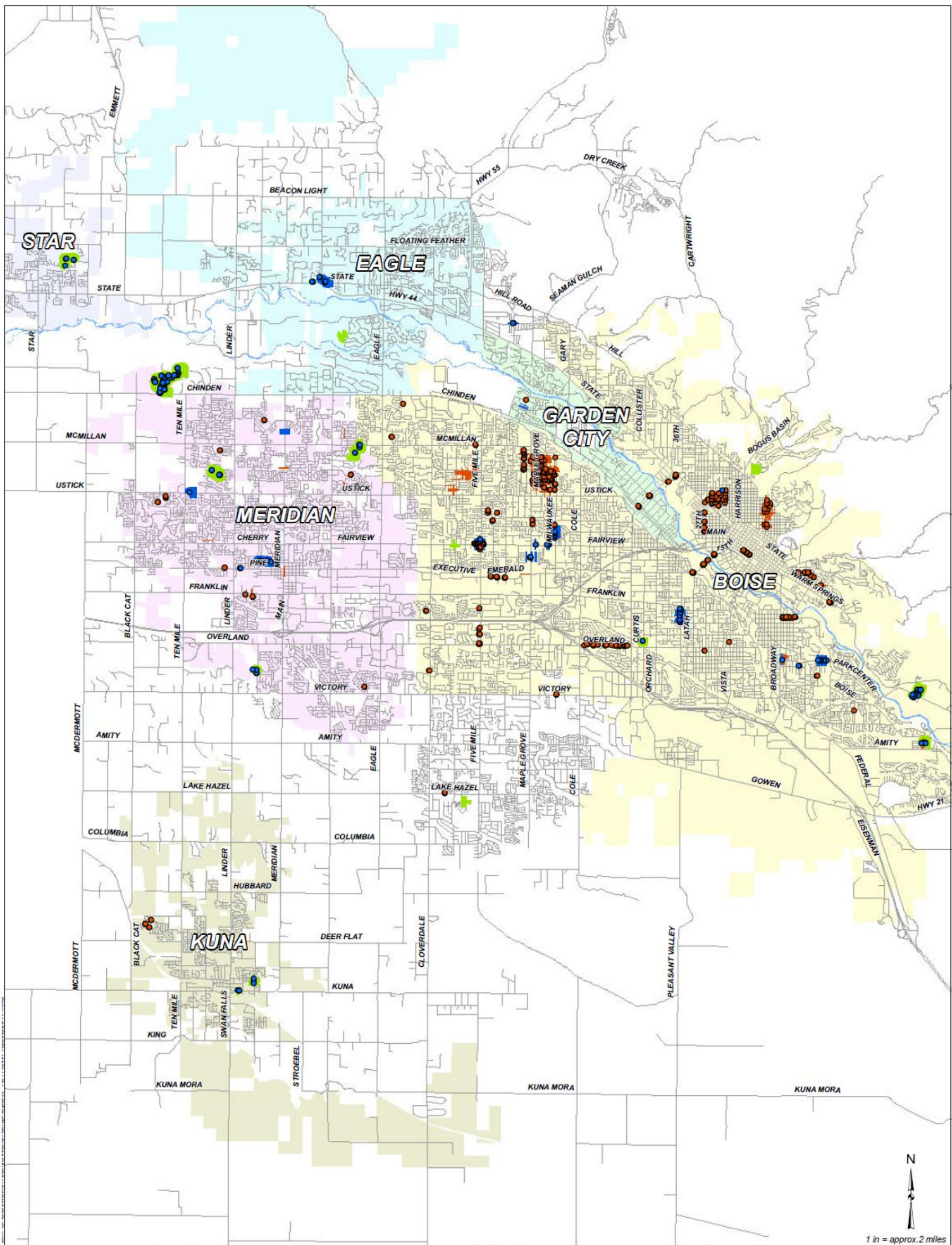
FY 2011	809028.011	ACHD Project	MapleGrovelrvingPed	2	Replaced Ramp	\$4,024
FY 2011	811003.022	ACHD Project	Mitchell @ Hoizon El	2	Replaced Ramp	\$4,024
FY 2011	811003.022	ACHD Project	Mitchell @ Hoizon El	2	Replaced Ramp	\$4,024
FY 2011	307012	ACHD Project	MISC New Install	48	New Ramp	\$96,576
FY 2011	810013	ACHD Project	Pennsylvania (Boise to Parkcenter)	2	New Ramp	\$4,024
FY 2011	810013	ACHD Project	Pennsylvania (Boise to Parkcenter)	2	New Ramp	\$4,024
FY 2011	810013	ACHD Project	Pennsylvania (Boise to Parkcenter)	2	New Ramp	\$4,024
FY 2011	810013	ACHD Project	Pennsylvania (Boise to Parkcenter)	2	New Ramp	\$4,024
FY 2011	810013	ACHD Project	Pennsylvania (Boise to Parkcenter)	2	New Ramp	\$4,024
FY 2011	810013	ACHD Project	Pennsylvania (Boise to Parkcenter)	2	New Ramp	\$4,024
FY 2011	810013	ACHD Project	Pennsylvania (Boise to Parkcenter)	2	New Ramp	\$4,024
FY 2011	810013	ACHD Project	Pennsylvania (Boise to Parkcenter)	2	New Ramp	\$4,024
FY 2011	811003.021	ACHD Project	Victory@Saturn Way	2	Replaced Ramp	\$4,024
FY 2011	811003.021	ACHD Project	Victory@Saturn Way	2	Replaced Ramp	\$4,024
FY 2011	811004.009	ACHD Project	MISC Install	26	Replaced Ramp	\$52,312
					Total	\$1,211,224

### Fiscal Year 2011 Subdivision Pedestrian Ramps

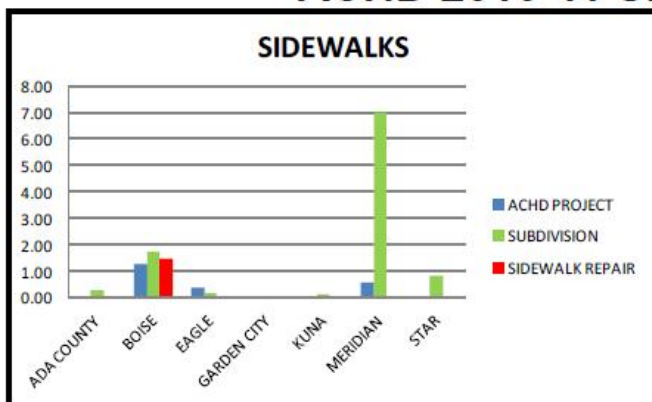
Year	Origin	Project Name	Number of Ramps	Construction Type	Estimated Cost
FY 2011	SUBDIVISION	FARCEL FIVE TWELVE	10	New Ramp	\$20,120
FY 2012	SUBDIVISION	KINNICK PLACE	4	New Ramp	\$8,048
FY 2013	SUBDIVISION	ZATICA NO 02	10	New Ramp	\$20,120
FY 2014	SUBDIVISION	Zebulon Heights	8	New Ramp	\$16,096
FY 2015	SUBDIVISION	JAYKER SUBDIVISION	126	New Ramp	\$253,512
FY 2016	SUBDIVISION	Rockbridge Phase 06	10	New Ramp	\$20,120
				Total	\$338,016



## Appendix C



### ACHD 2010-11 Sidewalk & Pedestrian Ramp Projects



- LEGEND**
- Pedestrian Ramps**
- New Ramps (Blue)
  - Replaced Ramps (Orange)
- Sidewalks**
- Sidewalk Repair (Red)
  - Subdivisions (Green)
  - ACHD Projects (Blue)

