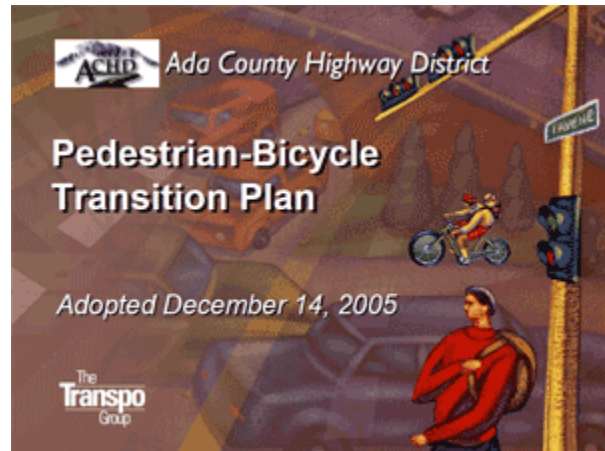


Ada County Highway District ADA Annual Report - Fiscal Year 2012

Background

On December 14, 2005 the Ada County Highway District (ACHD) Commission adopted the Pedestrian Bicycle Transition Plan (PBTP). The PBTP is intended to provide a comprehensive program to enhance the Ada County urban area pedestrian and bicycle system. This effort was initiated by ACHD, with a primary emphasis on addressing federal pedestrian planning guidelines and the regulatory requirements of the Americans with Disabilities Act (ADA), enacted on July 26, 1990.



ACHD has jurisdiction and responsibility for all public roads and streets within Ada County, Idaho, except state highways and interstate freeways. Under Idaho law, pedestrian (typically sidewalks) and bicycle system components of most public streets also fall within ACHD's jurisdiction.

The ADA provides comprehensive civil rights protections to persons with disabilities in the areas of employment, state and local government services, and access to public accommodations, transportation, telecommunications and other public facilities, including sidewalks.

There are five statutory titles to the ADA; Title II is of most concern to ACHD. The PBTP is intended to accommodate the most recent ADA policies and rules. Title II of the ADA prohibits state and local governments from discriminating against persons with disabilities by requiring them to make all programs, services, and activities accessible to persons with disabilities. Title II requires a public entity to evaluate its services, programs, policies, practices, and facilities to determine whether they are in compliance with the nondiscrimination requirements of the ADA.

The ADA requires that a transition plan be prepared, to describe any structural or physical changes required to make programs accessible. The transition plan outlines the methods by which physical or structural changes will be made to effect the nondiscrimination policies described in Title II.

Commensurate with the ADA requirements for inventory and self-evaluation, ACHD targeted a significant portion of the overall planning effort to complete a walking inventory of the entire, street-side pedestrian system within the Ada County urban areas.

In 2004-2005 more than 2,800 miles of existing and missing sidewalks and 19,300 street corners (with 15,500 curb ramps) were inventoried and assessed as part of ACHD's self-evaluation. Documenting the location, type and condition of sidewalks and curb ramps is an important step in the pedestrian planning

effort. A full inventory of missing sidewalks helps identify the critical “gaps” to fill. ACHD successfully completed a thorough inventory of the pedestrian system as the basis of the PBTP planning effort.

In addition to establishing the baseline data set, ACHD established standard operating procedures to ensure that the GIS database for sidewalk and curb ramps remains current as new facilities are installed and substandard facilities are repaired.

Purpose

Since the adoption of the PBTP, ACHD has worked diligently to plan, develop and construct improvements to the pedestrian system that bring the sidewalks and curb ramps in Ada County into compliance with ADA. The purpose of this Annual Report is to describe the improvements to the pedestrian system that occurred in fiscal year 2012. Each fiscal year, ACHD catalogs the new improvements, which are added to ACHD’s comprehensive pedestrian facility database system.

New Facilities

ACHD is constantly expanding the length of sidewalks and number of curb ramps in Ada County and its six cities. The new sidewalks and curb ramps are primarily constructed through one of the following programs or activities:

- Large scale ACHD “Capital Projects” such as roadway expansion, and overlays;
- Smaller scale ACHD “Community Programs Projects” such as sidewalk construction, safe routes to school projects, and curb ramps;
- Residential and commercial subdivisions;
- Miscellaneous commercial and residential building permits.



ACHD expends significant amounts of federal and local funds to construct new improvements to the pedestrian system each fiscal year. In addition to sidewalks and curb ramps that are constructed with ACHD Capital Projects (i.e. roadway widening and overlays), the ACHD Commission has dedicated five percent of ACHD’s annual capital budget to pedestrian specific projects (not associated with a specific roadway project). In 2009 Ada County voters approved an increase in vehicle registration fees to fund pedestrian projects near schools. These efforts by ACHD significantly exceed the Federal Highway Administration (FHWA)’s Safe Routes to School Program, which makes federal funding available through grants. ACHD applies for federal grants, but has historically been a leader in locally funded safe routes to school improvements.

In addition, private development through subdivisions and new development also contributes to the expansion of ACHD’s pedestrian network. ACHD works closely with developers to ensure that the pedestrian facilities constructed with private funds are ADA compliant. ACHD inspector’s visually inspect and sign off on all improvements in the public right-of-prior to official acceptance of the improvements.

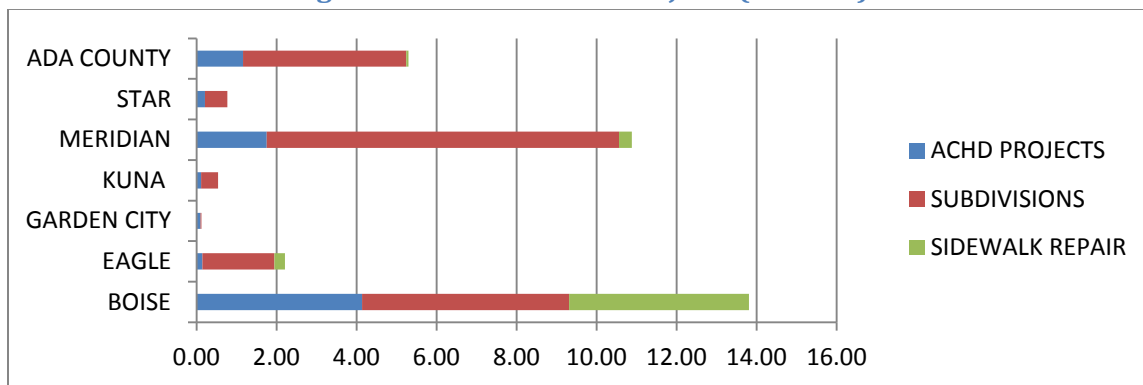
Facility Maintenance

ACHD also has a Sidewalk Repair Program that focuses on repairing or reconstructing substandard sidewalks and curb ramps. The sidewalk repair program is ACHD’s programmatic approach to repairing and replacing substandard pedestrian facilities. This program also repairs or replaces sidewalk and curb ramps based on citizen concerns/requests.

Fiscal Year 2012 System Improvements

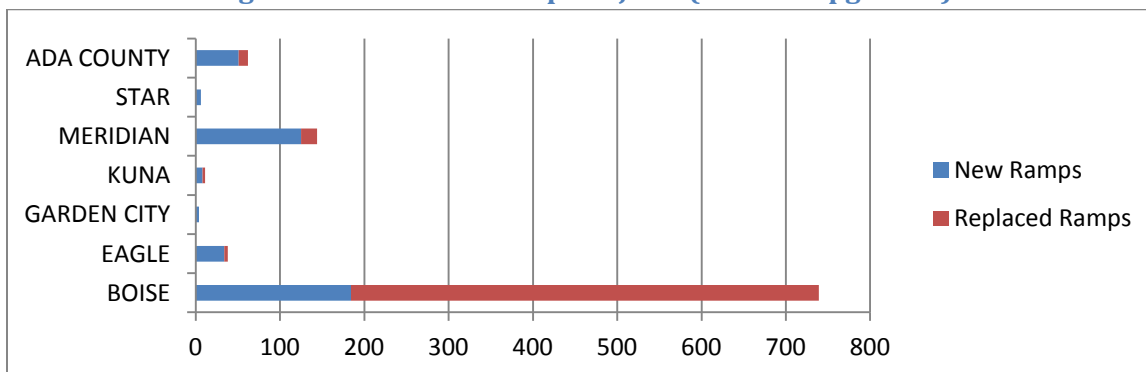
In fiscal year 2012, ACHD and private development installed over 28.5 miles of new sidewalks in Ada County. In addition to the new sidewalks, ACHD repaired 5.13 miles of substandard sidewalks. Figure 1 below illustrates the total mileage of new and repaired sidewalk for fiscal year 2012 broken down by jurisdiction. The total estimated investment in new and repaired sidewalks projects for fiscal year 2012 is close to \$5.1 million. (Further project details and cost estimates are described in Appendix A and map of project locations is shown in Appendix B).

Figure 1. 2012 Sidewalk Projects (in miles)



During same time period, ACHD and private development installed 412 new pedestrian ramps across Ada County. ACHD through its maintenance activities and sidewalk repair program replaced or upgraded an additional 592 pedestrian ramps to bring them into compliance with current ADA standards. The total estimated investment in new and repaired/replaced curb ramps for fiscal year 2012 is \$2.4 million (Further project details and cost estimates are described in Appendix A and map of project locations is shown in Appendix B).

Figure 2. 2012 Curb Ramp Projects (corners upgraded)



Appendix A

Fiscal Year 2012 Sidewalk Repair Projects

GPS DATE	WIDTH	PROJECT ORIGIN	PROJECT NAME	Length	Estimated Cost ¹	CITY/COUNTY
12/12/2012	4	2012 MISC CONCRETE	CLOVERDALE UTILITY CREW	17	\$510	ADA
12/12/2012	4	2012 MISC CONCRETE	CLOVERDALE UTILITY CREW	15	\$450	ADA
12/12/2012	4	2012 MISC CONCRETE	CLOVERDALE UTILITY CREW	129	\$3,870	ADA
12/12/2012	4	2012 MISC CONCRETE	CLOVERDALE UTILITY CREW	19	\$570	ADA
12/12/2012	4	2012 MISC CONCRETE	CLOVERDALE UTILITY CREW	21	\$630	ADA
11/2/2012	5	ACHD UTILITY CREW	Work Order	10	\$300	BOISE
6/8/2012	5	ACHD UTILITY CREW	Work Order	8	\$240	BOISE
10/26/2012	5	ACHD UTILITY CREW	Work Order	10	\$300	BOISE
5/17/2012	5	ACHD UTILITY CREW	Work Order	8	\$240	BOISE
9/12/2012	5	ACHD UTILITY CREW	Work Order	5	\$150	BOISE
9/1/2012	4	2012 Misc. Concrete Contracts	7014 Sunnybrook, Boise	32	\$960	BOISE
9/1/2012	4	2012 Misc. Concrete Contracts	7109 Brookover, Boise	69	\$2,070	BOISE
8/14/2012	5	ACHD UTILITY CREW	Work Order	8	\$240	BOISE
9/1/2012	4	2012 Misc. Concrete Contracts	7207 Brookover, Boise	21	\$630	BOISE
9/1/2012	4	2012 Misc. Concrete Contracts	7209 Brookover, Boise	110	\$3,300	BOISE
9/1/2012	4	2012 Misc. Concrete Contracts	7217 Brookover, Boise	46	\$1,380	BOISE
9/1/2012	6	2012 Misc. Concrete Contracts	1228 Jefferson, Boise	55	\$1,650	BOISE
9/1/2012	6	2012 Misc. Concrete Contracts	1301 State, Boise	59	\$1,770	BOISE
9/1/2012	6	2012 Misc. Concrete Contracts	1223 State, Boise	5	\$150	BOISE
9/1/2012	6	2012 Misc. Concrete Contracts	1213 State, Boise	43	\$1,290	BOISE
9/1/2012	6	2012 Misc. Concrete Contracts	1204 Jefferson, Boise	34	\$1,020	BOISE

¹ All cost estimates for sidewalk based on ACHD average cost of \$30 per lineal foot for new sidewalk constructed during FY 2012. This cost includes excavation and base material.

9/1/2012	6	2012 Misc. Concrete Contracts	1120 Jefferson, Boise	47	\$1,410	BOISE
9/1/2012	6	2012 Misc. Concrete Contracts	1118 Jefferson, Boise	13	\$390	BOISE
9/1/2012	6	2012 Misc. Concrete Contracts	1112 Jefferson, Boise	30	\$900	BOISE
9/1/2012	6	2012 Misc. Concrete Contracts	1106 Jefferson, Boise	20	\$600	BOISE
9/1/2012	6	2012 Misc. Concrete Contracts	1211 State, Boise	13	\$390	BOISE
9/1/2012	6	2012 Misc. Concrete Contracts	1222 State, Boise	71	\$2,130	BOISE
9/1/2012	6	2012 Misc. Concrete Contracts	1212 State, Boise	46	\$1,380	BOISE
3/8/2012	5	ACHD UTILITY CREW	WORK ORDER	8	\$240	MERIDIAN
9/1/2012	6	2012 Misc. Concrete Contracts	1219 Washington, Boise	108	\$3,240	BOISE
9/1/2012	6	2012 Misc. Concrete Contracts	1115 State, Boise	29	\$870	BOISE
9/1/2012	6	2012 Misc. Concrete Contracts	320 Walnut, Boise	15	\$450	BOISE
9/1/2012	6	2012 Misc. Concrete Contracts	1109 State, Boise	6	\$180	BOISE
9/1/2012	6	2012 Misc. Concrete Contracts	1105 State, Boise	44	\$1,320	BOISE
9/1/2012	6	2012 Misc. Concrete Contracts	1209 Washington, Boise	34	\$1,020	BOISE
9/1/2012	6	2012 Misc. Concrete Contracts	1203 Washington, Boise	105	\$3,150	BOISE
9/1/2012	4	2012 Misc. Concrete Contracts	950 E Krall, Boise	15	\$450	BOISE
9/1/2012	6	2012 Misc. Concrete Contracts	401 Idaho, Boise	105	\$3,150	BOISE
9/1/2012	8	2012 Misc. Concrete Contracts	122 N. 5th, Boise	40	\$1,200	BOISE
9/1/2012	4	2012 Misc. Concrete Contracts	1101 NW 11th, Meridian	40	\$1,200	MERIDIAN
9/1/2012	4	2012 Misc. Concrete Contracts	819 Carlton, Meridian	8	\$240	MERIDIAN
9/1/2012	4	2012 Misc. Concrete Contracts	917 Carlton, Meridian	35	\$1,050	MERIDIAN
9/1/2012	4	2012 Misc. Concrete Contracts	923 Carlton, Meridian	40	\$1,200	MERIDIAN
9/1/2012	4	2012 Misc. Concrete Contracts	929 Carlton, Meridian	30	\$900	MERIDIAN
9/1/2012	4	2012 Misc. Concrete Contracts	1003 Carlton, Meridian	16	\$480	MERIDIAN
9/1/2012	4	2012 Misc. Concrete Contracts	1019 Carlton, Meridian	15	\$450	MERIDIAN
9/1/2012	4	2012 Misc. Concrete Contracts	820 Carlton, Meridian	68	\$2,040	MERIDIAN
9/1/2012	4	2012 Misc. Concrete Contracts	1131 NW 8th, Meridian	31	\$930	MERIDIAN
9/1/2012	4	2012 Misc. Concrete Contracts	918 Carlton, Meridian	54	\$1,620	MERIDIAN
9/1/2012	4	2012 Misc. Concrete Contracts	918 Carlton, Meridian	5	\$150	MERIDIAN
9/1/2012	4	2012 Misc. Concrete Contracts	924 Carlton, Meridian	45	\$1,350	MERIDIAN

9/1/2012	4	2012 Misc. Concrete Contracts	936 Carlton, Meridian	25	\$750	MERIDIAN
9/1/2012	4	2012 Misc. Concrete Contracts	1002 Carlton, Meridian	15	\$450	MERIDIAN
9/1/2012	4	2012 Misc. Concrete Contracts	1020 Carlton, Meridian	5	\$150	MERIDIAN
9/1/2012	4	2012 Misc. Concrete Contracts	1022 Carlton, Meridian	20	\$600	MERIDIAN
9/1/2012	4	2012 Misc. Concrete Contracts	1140 NW 8th, Meridian	55	\$1,650	MERIDIAN
9/1/2012	4	2012 Misc. Concrete Contracts	1119 NW 11th, Meridian	30	\$900	MERIDIAN
9/1/2012	4	2012 Misc. Concrete Contracts	1138 NW 9th, Meridian	30	\$900	MERIDIAN
9/1/2012	4	2012 Misc. Concrete Contracts	1122 NW 11th, Meridian	47	\$1,410	MERIDIAN
9/1/2012	4	2012 Misc. Concrete Contracts	1141 NW 9th, Meridian	10	\$300	MERIDIAN
9/1/2012	4	2012 Misc. Concrete Contracts	921 Washington, Meridian	14	\$420	MERIDIAN
9/1/2012	4	2012 Misc. Concrete Contracts	1125 NW 11th, Meridian	5	\$150	MERIDIAN
9/1/2012	4	2012 Misc. Concrete Contracts	1001 Washington, Meridian	25	\$750	MERIDIAN
9/1/2012	4	2012 Misc. Concrete Contracts	918 Washington, Meridian	50	\$1,500	MERIDIAN
9/1/2012	4	2012 Misc. Concrete Contracts	920 Washington, Meridian	31	\$930	MERIDIAN
9/1/2012	4	2012 Misc. Concrete Contracts	926 Washington, Meridian	15	\$450	MERIDIAN
9/1/2012	4	2012 Misc. Concrete Contracts	1144 NW 9th, Meridian	51	\$1,530	MERIDIAN
9/1/2012	4	2012 Misc. Concrete Contracts	932 Washington, Meridian	24	\$720	MERIDIAN
9/1/2012	4	2012 Misc. Concrete Contracts	1002 Washington, Meridian	38	\$1,140	MERIDIAN
9/1/2012	4	2012 Misc. Concrete Contracts	1010 Washington, Meridian	7	\$210	MERIDIAN
9/1/2012	4	2012 Misc. Concrete Contracts	1016 Washington, Meridian	28	\$840	MERIDIAN
9/1/2012	4	2012 Misc. Concrete Contracts	1114 NW 12th, Meridian	12	\$360	MERIDIAN
9/1/2012	4	2012 Misc. Concrete Contracts	1205 NW 11th, Meridian	5	\$150	MERIDIAN
9/1/2012	4	2012 Misc. Concrete Contracts	908 Washington, Meridian	32	\$960	MERIDIAN
9/1/2012	4	2012 Misc. Concrete Contracts	914 Washington, Meridian	34	\$1,020	MERIDIAN
9/1/2012	4	2012 Misc. Concrete Contracts	1224 Cumberland Circle, Boise	30	\$900	BOISE
9/1/2012	4	2012 Misc. Concrete Contracts	1200 Cumberland, Boise	18	\$540	BOISE
9/1/2012	4	2012 Misc. Concrete Contracts	1236 Cumberland Circle, Boise	5	\$150	BOISE
9/1/2012	4	2012 Misc. Concrete Contracts	1217 NW 11th, Meridian	10	\$300	MERIDIAN
9/1/2012	4	2012 Misc. Concrete Contracts	1124 NW 12th, Meridian	13	\$390	MERIDIAN
9/1/2012	4	2012 Misc. Concrete Contracts	1242 Cumberland, Boise	21	\$630	BOISE

9/1/2012	4	2012 Misc. Concrete Contracts	1248 Cumberland Dr., Boise	8	\$240	BOISE
9/1/2012	4	2012 Misc. Concrete Contracts	1218 Cumberland Dr., Boise	4	\$120	BOISE
9/1/2012	4	2012 Misc. Concrete Contracts	1205 Cumberland Dr., Boise	4	\$120	BOISE
9/1/2012	4	2012 Misc. Concrete Contracts	1137 NW 12th, Meridian	21	\$630	MERIDIAN
9/1/2012	4	2012 Misc. Concrete Contracts	1237 Owens St., Boise	16	\$480	BOISE
9/1/2012	4	2012 Misc. Concrete Contracts	1238 Owens St., Boise	6	\$180	BOISE
9/1/2012	4	2012 Misc. Concrete Contracts	7611 Maxwell, Boise	68	\$2,040	BOISE
9/1/2012	4	2012 Misc. Concrete Contracts	7619 Maxwell, Boise	45	\$1,350	BOISE
9/1/2012	4	2012 Misc. Concrete Contracts	1311 Owens, Boise	12	\$360	BOISE
9/1/2012	4	2012 Misc. Concrete Contracts	7529 Maxwell, Boise	20	\$600	BOISE
9/1/2012	4	2012 Misc. Concrete Contracts	7629 Maxwell, Boise	32	\$960	BOISE
9/1/2012	4	2012 Misc. Concrete Contracts	7705 Maxwell, Boise	24	\$720	BOISE
9/1/2012	4	2012 Misc. Concrete Contracts	7504 Maxwell, Boise	7	\$210	BOISE
9/1/2012	4	2012 Misc. Concrete Contracts	1317 Owens St., Boise	8	\$240	BOISE
9/1/2012	4	2012 Misc. Concrete Contracts	7620 Maxwell, Boise	10	\$300	BOISE
9/1/2012	4	2012 Misc. Concrete Contracts	7626 Maxwell, Boise	33	\$990	BOISE
9/1/2012	4	2012 Misc. Concrete Contracts	7630 Maxwell, Boise	16	\$480	BOISE
9/1/2012	4	2012 Misc. Concrete Contracts	1321 Owens, Boise	24	\$720	BOISE
9/1/2012	4	2012 Misc. Concrete Contracts	1320 Owens, Boise	46	\$1,380	BOISE
9/1/2012	4	2012 Misc. Concrete Contracts	1327 Owens, Boise	30	\$900	BOISE
9/1/2012	4	2012 Misc. Concrete Contracts	7717 Colehaven, Boise	124	\$3,720	BOISE
9/1/2012	4	2012 Misc. Concrete Contracts	7619 Colehaven, Boise	15	\$450	BOISE
9/1/2012	4	2012 Misc. Concrete Contracts	1405 Owens, Boise	37	\$1,110	BOISE
9/1/2012	5	2012 Misc. Concrete Contracts	1740 NW 8th, Meridian	7	\$210	MERIDIAN
9/1/2012	5	2012 Misc. Concrete Contracts	1806 NW 8th, Meridian	16	\$480	MERIDIAN
9/1/2012	5	2012 Misc. Concrete Contracts	1818 NW 8th, Meridian	17	\$510	MERIDIAN
9/1/2012	6	2012 Misc. Concrete Contracts	207 17th, Boise	42	\$1,260	BOISE
9/1/2012	7.5	2012 Misc. Concrete Contracts	2012 HAZ SIDEWALK	114	\$3,420	BOISE
9/1/2012	7.5	2012 Misc. Concrete Contracts	950 State, Boise	97	\$2,910	BOISE
9/1/2012	5	2012 Misc. Concrete Contracts	SW Corner of NW 2nd/Cherry Lane, MERIDIAN	20	\$600	MERIDIAN

9/1/2012	6	2012 Misc. Concrete Contracts	1122 Jefferson, Boise	136	\$4,080	BOISE
9/1/2012	6	2012 Misc. Concrete Contracts	200 23rd, Boise	23	\$690	BOISE
9/1/2012	4	2012 Misc. Concrete Contracts	1721 NW 8th, Meridian	74	\$2,220	MERIDIAN
9/1/2012	5	2012 Misc. Concrete Contracts	1804 NW 8th, Meridian	21	\$630	MERIDIAN
9/1/2012	4	2012 Misc. Concrete Contracts	511 Lawndale, Meridian	109	\$3,270	MERIDIAN
7/30/2012	5	FAIRMONT PARK REHAB	512029	75	\$2,250	BOISE
9/1/2012	4	2012 Misc. Concrete Contracts	1819 Crestmont, Meridian	20	\$600	MERIDIAN
9/1/2012	6	2012 Misc. Concrete Contracts	1700 Main, Boise	165	\$4,950	BOISE
9/1/2012	4	2012 Misc. Concrete Contracts	1814 Crestmont, Meridian	19	\$570	MERIDIAN
9/1/2012	4	2012 Misc. Concrete Contracts	1819 Lawndale, Meridian	8	\$240	MERIDIAN
9/1/2012	6	2012 Misc. Concrete Contracts	1208 State, Boise	43	\$1,290	BOISE
9/1/2012	6	2012 Misc. Concrete Contracts	1216 State, Boise	34	\$1,020	BOISE
9/1/2012	6	2012 Misc. Concrete Contracts	115 17th, Boise	62	\$1,860	BOISE
9/1/2012	6	2012 Misc. Concrete Contracts	117 17th, Boise	8	\$240	BOISE
9/1/2012	4	2012 Misc. Concrete Contracts	1829 Crestmont, Meridian	32	\$960	MERIDIAN
7/30/2012	5	FAIRMONT PARK REHAB	512029	75	\$2,250	BOISE
9/1/2012	6	2012 Misc. Concrete Contracts	119 17th, Boise	88	\$2,640	BOISE
9/1/2012	6	2012 Misc. Concrete Contracts	1707 Idaho, Boise	29	\$870	BOISE
9/1/2012	6	2012 Misc. Concrete Contracts	1700 Idaho, Boise	37	\$1,110	BOISE
7/30/2012	5	FAIRMONT PARK REHAB	512029	75	\$2,250	BOISE
9/1/2012	4	2012 Misc. Concrete Contracts	1907 Lawndale, Meridian	20	\$600	MERIDIAN
7/30/2012	5	FAIRMONT PARK REHAB	512029	75	\$2,250	BOISE
9/1/2012	6	2012 Misc. Concrete Contracts	121 18th, Boise	59	\$1,770	BOISE
9/1/2012	6	2012 Misc. Concrete Contracts	108 18th, Boise	16	\$480	BOISE
9/1/2012	6	2012 Misc. Concrete Contracts	108 18th, Boise	171	\$5,130	BOISE
9/1/2012	6	2012 Misc. Concrete Contracts	315 18th, Boise	66	\$1,980	BOISE
9/1/2012	6	2012 Misc. Concrete Contracts	220 18th, Boise	47	\$1,410	BOISE
9/1/2012	6	2012 Misc. Concrete Contracts	1215 Washington, Boise	51	\$1,530	BOISE
9/1/2012	6	2012 Misc. Concrete Contracts	2202 Main, Boise	67	\$2,010	BOISE
9/1/2012	6	2012 Misc. Concrete Contracts	2202 Main, Boise	24	\$720	BOISE

9/1/2012	6	2012 Misc. Concrete Contracts	2422 Main, Boise	95	\$2,850	BOISE
9/1/2012	6	2012 Misc. Concrete Contracts	1805 Idaho, Boise	35	\$1,050	BOISE
7/30/2012	5	FAIRMONT PARK REHAB	512029	75	\$2,250	BOISE
7/30/2012	5	FAIRMONT PARK REHAB	512029	75	\$2,250	BOISE
9/1/2012	4	2012 Misc. Concrete Contracts	1920 Crestmont, Meridian	39	\$1,170	MERIDIAN
9/1/2012	4	2012 Misc. Concrete Contracts	1917 Lawndale, Meridian	72	\$2,160	MERIDIAN
7/30/2012	5	FAIRMONT PARK REHAB	512029	75	\$2,250	BOISE
7/30/2012	5	FAIRMONT PARK REHAB	512029	75	\$2,250	BOISE
9/1/2012	6	2012 Misc. Concrete Contracts	111 23rd, Boise	22	\$660	BOISE
9/1/2012	4	2012 Misc. Concrete Contracts	1930 Crestmont, Meridian	29	\$870	MERIDIAN
9/1/2012	4	2012 Misc. Concrete Contracts	712 McGlinchey, Meridian	34	\$1,020	MERIDIAN
9/1/2012	6	2012 Misc. Concrete Contracts	1807 Idaho, Boise	13	\$390	BOISE
9/1/2012	6	2012 Misc. Concrete Contracts	1722 Idaho, Boise	55	\$1,650	BOISE
9/1/2012	6	2012 Misc. Concrete Contracts	120 23rd, Boise	33	\$990	BOISE
9/1/2012	6	2012 Misc. Concrete Contracts	112 22nd, Boise	52	\$1,560	BOISE
9/1/2012	6	2012 Misc. Concrete Contracts	1501 22nd, Boise	12	\$360	BOISE
9/1/2012	6	2012 Misc. Concrete Contracts	1508 22nd, Boise	48	\$1,440	BOISE
9/1/2012	6	2012 Misc. Concrete Contracts	2401 Idaho, Boise	48	\$1,440	BOISE
9/1/2012	6	2012 Misc. Concrete Contracts	2401 Idaho, Boise	56	\$1,680	BOISE
9/1/2012	6	2012 Misc. Concrete Contracts	2323 Idaho, Boise	15	\$450	BOISE
9/1/2012	6	2012 Misc. Concrete Contracts	2421 Idaho, Boise	22	\$660	BOISE
9/1/2012	6	2012 Misc. Concrete Contracts	1811 Idaho, Boise	51	\$1,530	BOISE
9/1/2012	6	2012 Misc. Concrete Contracts	1811 Idaho, Boise	4	\$120	BOISE
9/1/2012	6	2012 Misc. Concrete Contracts	902 6th, Boise	12	\$360	BOISE
9/1/2012	6	2012 Misc. Concrete Contracts	208 18th, Boise	19	\$570	BOISE
9/1/2012	6	2012 Misc. Concrete Contracts	208 18th, Boise	20	\$600	BOISE
7/30/2012	5	FAIRMONT PARK REHAB	512029	75	\$2,250	BOISE
9/1/2012	6	2012 Misc. Concrete Contracts	1817 Idaho, Boise	11	\$330	BOISE
9/1/2012	6	2012 Misc. Concrete Contracts	1903 Idaho, Boise	56	\$1,680	BOISE
9/1/2012	6	2012 Misc. Concrete Contracts	1905 Idaho, Boise	45	\$1,350	BOISE

9/1/2012	6	2012 Misc. Concrete Contracts	2203 Idaho, Boise	6	\$180	BOISE
9/1/2012	6	2012 Misc. Concrete Contracts	2209 Idaho, Boise	20	\$600	BOISE
9/1/2012	6	2012 Misc. Concrete Contracts	2215 Idaho, Boise	10	\$300	BOISE
9/1/2012	6	2012 Misc. Concrete Contracts	2215 Idaho, Boise	12	\$360	BOISE
9/1/2012	6	2012 Misc. Concrete Contracts	2311 Idaho, Boise	27	\$810	BOISE
9/1/2012	6	2012 Misc. Concrete Contracts	2315 Idaho, Boise	12	\$360	BOISE
9/1/2012	6	2012 Misc. Concrete Contracts	2405 Idaho, Boise	9	\$270	BOISE
9/1/2012	6	2012 Misc. Concrete Contracts	2415 Idaho, Boise	14	\$420	BOISE
9/1/2012	6	2012 Misc. Concrete Contracts	2415 Idaho, Boise	34	\$1,020	BOISE
9/1/2012	6	2012 Misc. Concrete Contracts	2419 Idaho, Boise	56	\$1,680	BOISE
9/1/2012	6	2012 Misc. Concrete Contracts	1913 Idaho, Boise	4	\$120	BOISE
9/1/2012	6	2012 Misc. Concrete Contracts	1917 Idaho, Boise	20	\$600	BOISE
9/1/2012	6	2012 Misc. Concrete Contracts	2212 Idaho, Boise	33	\$990	BOISE
9/1/2012	6	2012 Misc. Concrete Contracts	521 Union, Boise	25	\$750	BOISE
9/1/2012	6	2012 Misc. Concrete Contracts	2214 Idaho, Boise	12	\$360	BOISE
9/1/2012	6	2012 Misc. Concrete Contracts	2412 Idaho, Boise	16	\$480	BOISE
9/1/2012	6	2012 Misc. Concrete Contracts	214 18th, Boise	30	\$900	BOISE
9/1/2012	6	2012 Misc. Concrete Contracts	214 18th, Boise	20	\$600	BOISE
7/30/2012	5	FAIRMONT PARK REHAB	512029	75	\$2,250	BOISE
7/30/2012	5	FAIRMONT PARK REHAB	512029	75	\$2,250	BOISE
9/1/2012	6	2012 Misc. Concrete Contracts	216 18th, Boise	32	\$960	BOISE
9/1/2012	6	2012 Misc. Concrete Contracts	417 Union, Boise	42	\$1,260	BOISE
9/1/2012	6	2012 Misc. Concrete Contracts	419 Union, Boise	44	\$1,320	BOISE
9/1/2012	6	2012 Misc. Concrete Contracts	519 Union, Boise	67	\$2,010	BOISE
9/1/2012	6	2012 Misc. Concrete Contracts	1801 Bannock, Boise	13	\$390	BOISE
9/1/2012	6	2012 Misc. Concrete Contracts	2400 Idaho, Boise	26	\$780	BOISE
9/1/2012	6	2012 Misc. Concrete Contracts	2502 Idaho, Boise	25	\$750	BOISE
7/30/2012	5	FAIRMONT PARK REHAB	512029	75	\$2,250	BOISE
9/1/2012	6	2012 Misc. Concrete Contracts	1002 5th, Boise	43	\$1,290	BOISE
9/1/2012	6	2012 Misc. Concrete Contracts	1002 6th, Boise	25	\$750	BOISE

9/1/2012	6	2012 Misc. Concrete Contracts	410 Union, Boise	21	\$630	BOISE
9/1/2012	6	2012 Misc. Concrete Contracts	502 Union, Boise	17	\$510	BOISE
9/1/2012	6	2012 Misc. Concrete Contracts	502 Union, Boise	21	\$630	BOISE
9/1/2012	6	2012 Misc. Concrete Contracts	408 Union, Boise	6	\$180	BOISE
9/1/2012	6	2012 Misc. Concrete Contracts	402 Union, Boise	9	\$270	BOISE
7/30/2012	5	FAIRMONT PARK REHAB	512029	75	\$2,250	BOISE
9/1/2012	6	2012 Misc. Concrete Contracts	207 22nd, Boise	9	\$270	BOISE
9/1/2012	6	2012 Misc. Concrete Contracts	208 19th, Boise	49	\$1,470	BOISE
9/1/2012	6	2012 Misc. Concrete Contracts	1003 6th, Boise	20	\$600	BOISE
9/1/2012	4	2012 Misc. Concrete Contracts	1826 Crestmont, Meridian	23	\$690	MERIDIAN
9/1/2012	6	2012 Misc. Concrete Contracts	1008 6th, Boise	33	\$990	BOISE
9/1/2012	6	2012 Misc. Concrete Contracts	1905 Bannock, Boise	10	\$300	BOISE
9/1/2012	6	2012 Misc. Concrete Contracts	1724 Bannock, Boise	75	\$2,250	BOISE
9/1/2012	6	2012 Misc. Concrete Contracts	1809 Bannock, Boise	9	\$270	BOISE
9/1/2012	6	2012 Misc. Concrete Contracts	1006 5th, Boise	34	\$1,020	BOISE
9/1/2012	6	2012 Misc. Concrete Contracts	214 19th, Boise	26	\$780	BOISE
9/1/2012	6	2012 Misc. Concrete Contracts	1802 Bannock, Boise	38	\$1,140	BOISE
9/1/2012	6	2012 Misc. Concrete Contracts	211 22nd, Boise	22	\$660	BOISE
9/1/2012	6	2012 Misc. Concrete Contracts	2401 Bannock, Boise	68	\$2,040	BOISE
9/1/2012	6	2012 Misc. Concrete Contracts	2401 Bannock, Boise	51	\$1,530	BOISE
9/1/2012	6	2012 Misc. Concrete Contracts	216 23rd, Boise	40	\$1,200	BOISE
9/1/2012	6	2012 Misc. Concrete Contracts	2521 Bannock, Boise	12	\$360	BOISE
9/1/2012	6	2012 Misc. Concrete Contracts	219 19th, Boise	23	\$690	BOISE
9/1/2012	6	2012 Misc. Concrete Contracts	219 19th, Boise	28	\$840	BOISE
9/1/2012	6	2012 Misc. Concrete Contracts	219 19th, Boise	24	\$720	BOISE
9/1/2012	6	2012 Misc. Concrete Contracts	337 17th, Boise	22	\$660	BOISE
9/1/2012	6	2012 Misc. Concrete Contracts	1011 5th, Boise	13	\$390	BOISE
9/1/2012	6	2012 Misc. Concrete Contracts	1010 6th, Boise	18	\$540	BOISE
9/1/2012	4	2012 Misc. Concrete Contracts	2004 Regal, Boise	12	\$360	BOISE
9/1/2012	4	2012 Misc. Concrete Contracts	2005 Regal, Boise	26	\$780	BOISE

9/1/2012	6	2012 Misc. Concrete Contracts	1015 5th, Boise	12	\$360	BOISE
9/1/2012	6	2012 Misc. Concrete Contracts	1026 6th, Boise	20	\$600	BOISE
9/1/2012	6	2012 Misc. Concrete Contracts	2105 Bannock, Boise	51	\$1,530	BOISE
9/1/2012	6	2012 Misc. Concrete Contracts	2115 Bannock, Boise	27	\$810	BOISE
9/1/2012	4	2012 Misc. Concrete Contracts	2021 Regal, Boise	5	\$150	BOISE
9/1/2012	6	2012 Misc. Concrete Contracts	2417 Bannock, Boise	40	\$1,200	BOISE
9/1/2012	6	2012 Misc. Concrete Contracts	2409 Bannock, Boise	48	\$1,440	BOISE
9/1/2012	6	2012 Misc. Concrete Contracts	2405 Bannock, Boise	22	\$660	BOISE
9/1/2012	6	2012 Misc. Concrete Contracts	447 Thatcher, Boise	48	\$1,440	BOISE
9/1/2012	6	2012 Misc. Concrete Contracts	1721 Jefferson, Boise	62	\$1,860	BOISE
9/1/2012	6	2012 Misc. Concrete Contracts	2509 Bannock, Boise	43	\$1,290	BOISE
9/1/2012	6	2012 Misc. Concrete Contracts	2515 Bannock, Boise	51	\$1,530	BOISE
9/1/2012	6	2012 Misc. Concrete Contracts	2110 Bannock, Boise	39	\$1,170	BOISE
9/1/2012	6	2012 Misc. Concrete Contracts	2114 Bannock, Boise	51	\$1,530	BOISE
9/1/2012	6	2012 Misc. Concrete Contracts	2116 Bannock, Boise	13	\$390	BOISE
9/1/2012	6	2012 Misc. Concrete Contracts	2412 Bannock, Boise	15	\$450	BOISE
9/1/2012	6	2012 Misc. Concrete Contracts	2416 Bannock, Boise	12	\$360	BOISE
9/1/2012	4	2012 Misc. Concrete Contracts	2016 Regal, Boise	28	\$840	BOISE
9/1/2012	6	2012 Misc. Concrete Contracts	509 Thatcher, Boise	5	\$150	BOISE
9/1/2012	6	2012 Misc. Concrete Contracts	2102 Bannock, Boise	42	\$1,260	BOISE
9/1/2012	6	2012 Misc. Concrete Contracts	612 Thatcher, Boise	20	\$600	BOISE
9/1/2012	4	2012 Misc. Concrete Contracts	2020 Regal, Boise	33	\$990	BOISE
7/30/2012	5	FAIRMONT PARK REHAB	512029	75	\$2,250	BOISE
9/1/2012	6	2012 Misc. Concrete Contracts	1901 Jefferson, Boise	178	\$5,340	BOISE
9/1/2012	6	2012 Misc. Concrete Contracts	1901 Jefferson, Boise	187	\$5,610	BOISE
9/1/2012	6	2012 Misc. Concrete Contracts	1901 Jefferson, Boise	38	\$1,140	BOISE
9/1/2012	6	2012 Misc. Concrete Contracts	442 Thatcher, Boise	38	\$1,140	BOISE
9/1/2012	6	2012 Misc. Concrete Contracts	1102 6th, Boise	16	\$480	BOISE
9/1/2012	6	2012 Misc. Concrete Contracts	1103 5th, Boise	33	\$990	BOISE
9/1/2012	6	2012 Misc. Concrete Contracts	1101 5th, Boise	13	\$390	BOISE

9/1/2012	6	2012 Misc. Concrete Contracts	1103 6th, Boise	46	\$1,380	BOISE
9/1/2012	6	2012 Misc. Concrete Contracts	2302 Bannock, Boise	79	\$2,370	BOISE
9/1/2012	6	2012 Misc. Concrete Contracts	2302 Bannock, Boise	25	\$750	BOISE
9/1/2012	6	2012 Misc. Concrete Contracts	1102 7th, Boise	67	\$2,010	BOISE
9/1/2012	6	2012 Misc. Concrete Contracts	2400 Bannock, Boise	6	\$180	BOISE
9/1/2012	6	2012 Misc. Concrete Contracts	2324 Bannock, Boise	26	\$780	BOISE
9/1/2012	6	2012 Misc. Concrete Contracts	2420 Bannock, Boise	48	\$1,440	BOISE
9/1/2012	6	2012 Misc. Concrete Contracts	2120 Bannock, Boise	121	\$3,630	BOISE
9/1/2012	6	2012 Misc. Concrete Contracts	306 19th, Boise	6	\$180	BOISE
7/30/2012	5	FAIRMONT PARK REHAB	512029	75	\$2,250	BOISE
9/1/2012	6	2012 Misc. Concrete Contracts	307 21st, Boise	82	\$2,460	BOISE
9/1/2012	4	2012 Misc. Concrete Contracts	2031 Regal, Boise	6	\$180	BOISE
9/1/2012	6	2012 Misc. Concrete Contracts	1102 5th, Boise	59	\$1,770	BOISE
9/1/2012	6	2012 Misc. Concrete Contracts	1800 Jefferson, Boise	47	\$1,410	BOISE
9/1/2012	6	2012 Misc. Concrete Contracts	1108 7th, Boise	45	\$1,350	BOISE
9/1/2012	6	2012 Misc. Concrete Contracts	1821 Jefferson, Boise	19	\$570	BOISE
9/1/2012	6	2012 Misc. Concrete Contracts	1109 5th, Boise	18	\$540	BOISE
7/30/2012	5	FAIRMONT PARK REHAB	512029	75	\$2,250	BOISE
9/1/2012	6	2012 Misc. Concrete Contracts	2301 Jefferson, Boise	15	\$450	BOISE
9/1/2012	6	2012 Misc. Concrete Contracts	2301 Jefferson, Boise	51	\$1,530	BOISE
9/1/2012	6	2012 Misc. Concrete Contracts	2301 Jefferson, Boise	33	\$990	BOISE
9/1/2012	6	2012 Misc. Concrete Contracts	1111 6th, Boise	13	\$390	BOISE
9/1/2012	6	2012 Misc. Concrete Contracts	2201 Jefferson, Boise	9	\$270	BOISE
9/1/2012	6	2012 Misc. Concrete Contracts	2201 Jefferson, Boise	20	\$600	BOISE
9/1/2012	6	2012 Misc. Concrete Contracts	2291 Jefferson, Boise	27	\$810	BOISE
9/1/2012	6	2012 Misc. Concrete Contracts	2421 Jefferson, Boise	20	\$600	BOISE
9/1/2012	6	2012 Misc. Concrete Contracts	2121 Jefferson, Boise	18	\$540	BOISE
9/1/2012	6	2012 Misc. Concrete Contracts	2121 Jefferson, Boise	74	\$2,220	BOISE
9/1/2012	6	2012 Misc. Concrete Contracts	1112 7th, Boise	77	\$2,310	BOISE
9/1/2012	4	2012 Misc. Concrete Contracts	2033 Regal, Boise	19	\$570	BOISE

9/1/2012	6	2012 Misc. Concrete Contracts	1111 5th, Boise	26	\$780	BOISE
9/1/2012	6	2012 Misc. Concrete Contracts	1112 5th, Boise	40	\$1,200	BOISE
7/30/2012	5	FAIRMONT PARK REHAB	512029	75	\$2,250	BOISE
7/30/2012	5	FAIRMONT PARK REHAB	512029	75	\$2,250	BOISE
7/30/2012	5	FAIRMONT PARK REHAB	512029	75	\$2,250	BOISE
9/1/2012	6	2012 Misc. Concrete Contracts	1115 6th, Boise	30	\$900	BOISE
9/1/2012	6	2012 Misc. Concrete Contracts	2107 Jefferson, Boise	32	\$960	BOISE
9/1/2012	6	2012 Misc. Concrete Contracts	2117 Jefferson, Boise	19	\$570	BOISE
9/1/2012	6	2012 Misc. Concrete Contracts	2205 Jefferson, Boise	52	\$1,560	BOISE
9/1/2012	6	2012 Misc. Concrete Contracts	2211 Jefferson, Boise	13	\$390	BOISE
9/1/2012	6	2012 Misc. Concrete Contracts	2215 Jefferson, Boise	22	\$660	BOISE
9/1/2012	6	2012 Misc. Concrete Contracts	2307 Jefferson, Boise	68	\$2,040	BOISE
9/1/2012	6	2012 Misc. Concrete Contracts	1114 7th, Boise	24	\$720	BOISE
9/1/2012	6	2012 Misc. Concrete Contracts	1114 7th, Boise	71	\$2,130	BOISE
9/1/2012	4	2012 Misc. Concrete Contracts	2032 Regal, Boise	86	\$2,580	BOISE
9/1/2012	6	2012 Misc. Concrete Contracts	401 19th, Boise	12	\$360	BOISE
9/1/2012	6	2012 Misc. Concrete Contracts	1910 Jefferson, Boise	43	\$1,290	BOISE
9/1/2012	6	2012 Misc. Concrete Contracts	1916 Jefferson, Boise	25	\$750	BOISE
9/1/2012	6	2012 Misc. Concrete Contracts	1920 Jefferson, Boise	59	\$1,770	BOISE
9/1/2012	6	2012 Misc. Concrete Contracts	2106 Jefferson, Boise	34	\$1,020	BOISE
9/1/2012	6	2012 Misc. Concrete Contracts	1117 6th, Boise	47	\$1,410	BOISE
9/1/2012	6	2012 Misc. Concrete Contracts	1120 6th, Boise	21	\$630	BOISE
9/1/2012	6	2012 Misc. Concrete Contracts	2310 Jefferson, Boise	18	\$540	BOISE
9/1/2012	6	2012 Misc. Concrete Contracts	2314 Jefferson, Boise	19	\$570	BOISE
9/1/2012	6	2012 Misc. Concrete Contracts	2410 Jefferson, Boise	10	\$300	BOISE
7/30/2012	5	FAIRMONT PARK REHAB	512029	75	\$2,250	BOISE
9/1/2012	6	2012 Misc. Concrete Contracts	1820 Jefferson, Boise	23	\$690	BOISE
7/30/2012	5	FAIRMONT PARK REHAB	512029	75	\$2,250	BOISE
7/30/2012	5	FAIRMONT PARK REHAB	512029	75	\$2,250	BOISE
1/18/2012	5	ACHD UTILITY CREW	Work Order	59	\$1,770	BOISE

1/18/2012	5	ACHD UTILITY CREW	WORK ORDER	8	\$240	BOISE
9/1/2012	6	2012 Misc. Concrete Contracts	1115 5th, Boise	11	\$330	BOISE
9/1/2012	6	2012 Misc. Concrete Contracts	1115 5th, Boise	48	\$1,440	BOISE
9/1/2012	6	2012 Misc. Concrete Contracts	405 19th, Boise	52	\$1,560	BOISE
9/1/2012	6	2012 Misc. Concrete Contracts	1116 6th, Boise	3	\$90	BOISE
9/1/2012	4	2012 Misc. Concrete Contracts	2125 Regal, Boise	20	\$600	BOISE
7/30/2012	5	FAIRMONT PARK REHAB	512029	75	\$2,250	BOISE
7/30/2012	5	FAIRMONT PARK REHAB	512029	75	\$2,250	BOISE
9/1/2012	6	2012 Misc. Concrete Contracts	2102 Jefferson, Boise	50	\$1,500	BOISE
9/1/2012	6	2012 Misc. Concrete Contracts	2402 Jefferson, Boise	12	\$360	BOISE
9/1/2012	6	2012 Misc. Concrete Contracts	2402 Jefferson, Boise	92	\$2,760	BOISE
9/1/2012	6	2012 Misc. Concrete Contracts	403 23rd, Boise	25	\$750	BOISE
9/1/2012	6	2012 Misc. Concrete Contracts	2324 Jefferson, Boise	68	\$2,040	BOISE
9/1/2012	6	2012 Misc. Concrete Contracts	1202 5th, Boise	18	\$540	BOISE
1/18/2012	5	ACHD UTILITY CREW	Work Order	24	\$720	BOISE
9/1/2012	6	2012 Misc. Concrete Contracts	1201 6th, Boise	16	\$480	BOISE
9/1/2012	6	2012 Misc. Concrete Contracts	1202 6th, Boise	34	\$1,020	BOISE
7/30/2012	5	FAIRMONT PARK REHAB	512029	75	\$2,250	BOISE
9/1/2012	6	2012 Misc. Concrete Contracts	2293 Jefferson, Boise	25	\$750	BOISE
7/30/2012	5	FAIRMONT PARK REHAB	512029	75	\$2,250	BOISE
9/1/2012	6	2012 Misc. Concrete Contracts	404 21st, Boise	30	\$900	BOISE
7/30/2012	5	FAIRMONT PARK REHAB	512029	75	\$2,250	BOISE
7/30/2012	5	FAIRMONT PARK REHAB	512029	75	\$2,250	BOISE
9/1/2012	6	2012 Misc. Concrete Contracts	1821 State, Boise	59	\$1,770	BOISE
7/30/2012	5	FAIRMONT PARK REHAB	512029	75	\$2,250	BOISE
7/30/2012	5	FAIRMONT PARK REHAB	512029	75	\$2,250	BOISE
7/30/2012	5	FAIRMONT PARK REHAB	512029	75	\$2,250	BOISE
9/1/2012	6	2012 Misc. Concrete Contracts	1206 5th, Boise	10	\$300	BOISE
9/1/2012	6	2012 Misc. Concrete Contracts	1208 7th, Boise	35	\$1,050	BOISE
7/30/2012	5	FAIRMONT PARK REHAB	512029	75	\$2,250	BOISE

9/1/2012	6	2012 Misc. Concrete Contracts	417 21st, Boise	52	\$1,560	BOISE
9/1/2012	6	2012 Misc. Concrete Contracts	2121 Madison, Boise	12	\$360	BOISE
9/1/2012	6	2012 Misc. Concrete Contracts	2121 Madison, Boise	96	\$2,880	BOISE
9/1/2012	6	2012 Misc. Concrete Contracts	2321 Madison, Boise	28	\$840	BOISE
9/1/2012	6	2012 Misc. Concrete Contracts	2421 Madison, Boise	28	\$840	BOISE
9/1/2012	6	2012 Misc. Concrete Contracts	1212 5th, Boise	12	\$360	BOISE
9/1/2012	6	2012 Misc. Concrete Contracts	2109 Madison, Boise	16	\$480	BOISE
9/1/2012	6	2012 Misc. Concrete Contracts	2115 Madison, Boise	15	\$450	BOISE
7/30/2012	5	FAIRMONT PARK REHAB	512029	75	\$2,250	BOISE
9/1/2012	6	2012 Misc. Concrete Contracts	2315 Madison, Boise	6	\$180	BOISE
9/1/2012	6	2012 Misc. Concrete Contracts	2417 Madison, Boise	36	\$1,080	BOISE
9/1/2012	4	2012 Misc. Concrete Contracts	8118 Wesley, Boise	33	\$990	BOISE
9/1/2012	6	2012 Misc. Concrete Contracts	507 Pueblo, Boise	12	\$360	BOISE
7/30/2012	5	FAIRMONT PARK REHAB	512029	75	\$2,250	BOISE
9/1/2012	6	2012 Misc. Concrete Contracts	2104 Madison, Boise	23	\$690	BOISE
9/1/2012	6	2012 Misc. Concrete Contracts	1220 5th, Boise	11	\$330	BOISE
9/1/2012	6	2012 Misc. Concrete Contracts	2306 Madison, Boise	22	\$660	BOISE
9/1/2012	6	2012 Misc. Concrete Contracts	1219 6th, Boise	22	\$660	BOISE
9/1/2012	6	2012 Misc. Concrete Contracts	2404 Madison, Boise	19	\$570	BOISE
9/1/2012	6	2012 Misc. Concrete Contracts	2410 Madison, Boise	14	\$420	BOISE
9/1/2012	6	2012 Misc. Concrete Contracts	2418 Madison, Boise	28	\$840	BOISE
9/1/2012	6	2012 Misc. Concrete Contracts	1220 7th, Boise	61	\$1,830	BOISE
7/30/2012	5	FAIRMONT PARK REHAB	512029	75	\$2,250	BOISE
9/1/2012	6	2012 Misc. Concrete Contracts	1906 State, Boise	33	\$990	BOISE
7/30/2012	5	FAIRMONT PARK REHAB	512029	75	\$2,250	BOISE
9/1/2012	6	2012 Misc. Concrete Contracts	431 Pueblo, Boise	6	\$180	BOISE
9/1/2012	6	2012 Misc. Concrete Contracts	1214 7th, Boise	20	\$600	BOISE
7/30/2012	5	FAIRMONT PARK REHAB	512029	75	\$2,250	BOISE
9/1/2012	6	2012 Misc. Concrete Contracts	1910 State, Boise	37	\$1,110	BOISE
9/1/2012	6	2012 Misc. Concrete Contracts	2102 Madison, Boise	58	\$1,740	BOISE

9/1/2012	6	2012 Misc. Concrete Contracts	2120 Madison, Boise	84	\$2,520	BOISE
9/1/2012	6	2012 Misc. Concrete Contracts	2220 Madison, Boise	61	\$1,830	BOISE
9/1/2012	6	2012 Misc. Concrete Contracts	2320 Madison, Boise	5	\$150	BOISE
9/1/2012	6	2012 Misc. Concrete Contracts	517 19th, Boise	53	\$1,590	BOISE
9/1/2012	6	2012 Misc. Concrete Contracts	504 Pueblo, Boise	72	\$2,160	BOISE
9/1/2012	6	2012 Misc. Concrete Contracts	1307 5th, Boise	24	\$720	BOISE
9/1/2012	6	2012 Misc. Concrete Contracts	1306 6th, Boise	30	\$900	BOISE
9/1/2012	6	2012 Misc. Concrete Contracts	518 Pueblo, Boise	54	\$1,620	BOISE
9/1/2012	6	2012 Misc. Concrete Contracts	1302 7th, Boise	70	\$2,100	BOISE
7/30/2012	5	FAIRMONT PARK REHAB	512029	75	\$2,250	BOISE
9/1/2012	6	2012 Misc. Concrete Contracts	1918 State, Boise	32	\$960	BOISE
7/30/2012	5	FAIRMONT PARK REHAB	512029	75	\$2,250	BOISE
9/1/2012	6	2012 Misc. Concrete Contracts	1310 7th, Boise	46	\$1,380	BOISE
9/1/2012	6	2012 Misc. Concrete Contracts	1309 6th, Boise	26	\$780	BOISE
9/1/2012	6	2012 Misc. Concrete Contracts	1928 State, Boise	37	\$1,110	BOISE
9/1/2012	6	2012 Misc. Concrete Contracts	1928 State, Boise	14	\$420	BOISE
9/1/2012	6	2012 Misc. Concrete Contracts	1309 5th, Boise	12	\$360	BOISE
9/1/2012	6	2012 Misc. Concrete Contracts	1312 6th, Boise	19	\$570	BOISE
9/1/2012	6	2012 Misc. Concrete Contracts	1311 6th, Boise	33	\$990	BOISE
9/1/2012	6	2012 Misc. Concrete Contracts	1316 6th, Boise	31	\$930	BOISE
9/1/2012	6	2012 Misc. Concrete Contracts	1315 6th, Boise	36	\$1,080	BOISE
11/2/2012	5	ACHD UTILITY CREW	Work Order	20	\$600	BOISE
9/1/2012	6	2012 Misc. Concrete Contracts	1319 5th, Boise	12	\$360	BOISE
7/30/2012	5	FAIRMONT PARK REHAB	512029	75	\$2,250	BOISE
9/1/2012	6	2012 Misc. Concrete Contracts	1940 State, Boise	6	\$180	BOISE
9/1/2012	6	2012 Misc. Concrete Contracts	1320 6th, Boise	21	\$630	BOISE
9/1/2012	6	2012 Misc. Concrete Contracts	1316 7th, Boise	35	\$1,050	BOISE
9/1/2012	6	2012 Misc. Concrete Contracts	1320 7th, Boise	16	\$480	BOISE
9/1/2012	6	2012 Misc. Concrete Contracts	504 Resseguie, Boise	45	\$1,350	BOISE
9/1/2012	6	2012 Misc. Concrete Contracts	1405 6th, Boise	31	\$930	BOISE

7/30/2012	5	FAIRMONT PARK REHAB	512029	75	\$2,250	BOISE
9/1/2012	6	2012 Misc. Concrete Contracts	1404 7th, Boise	41	\$1,230	BOISE
7/30/2012	5	FAIRMONT PARK REHAB	512029	75	\$2,250	BOISE
9/1/2012	6	2012 Misc. Concrete Contracts	2003 Ellis, Boise	36	\$1,080	BOISE
9/1/2012	6	2012 Misc. Concrete Contracts	2050 State, Boise	36	\$1,080	BOISE
9/1/2012	6	2012 Misc. Concrete Contracts	2050 State (frontage), Boise	83	\$2,490	BOISE
9/1/2012	6	2012 Misc. Concrete Contracts	2100 State, Boise	10	\$300	BOISE
9/1/2012	6	2012 Misc. Concrete Contracts	2104 State, Boise	33	\$990	BOISE
9/1/2012	6	2012 Misc. Concrete Contracts	710 21st, Boise	33	\$990	BOISE
9/1/2012	6	2012 Misc. Concrete Contracts	2110 State, Boise	14	\$420	BOISE
9/1/2012	6	2012 Misc. Concrete Contracts	1411 6th, Boise	55	\$1,650	BOISE
9/1/2012	6	2012 Misc. Concrete Contracts	2027 Ellis, Boise	64	\$1,920	BOISE
9/1/2012	6	2012 Misc. Concrete Contracts	2023 Ellis, Boise	26	\$780	BOISE
9/1/2012	6	2012 Misc. Concrete Contracts	1416 7th, Boise	18	\$540	BOISE
9/1/2012	6	2012 Misc. Concrete Contracts	2018 Ellis, Boise	56	\$1,680	BOISE
9/1/2012	6	2012 Misc. Concrete Contracts	1418 6th, Boise	61	\$1,830	BOISE
9/1/2012	6	2012 Misc. Concrete Contracts	1418 6th, Boise	13	\$390	BOISE
9/1/2012	6	2012 Misc. Concrete Contracts	2101 Ellis, Boise	37	\$1,110	BOISE
9/1/2012	6	2012 Misc. Concrete Contracts	2022 Ellis, Boise	14	\$420	BOISE
9/1/2012	6	2012 Misc. Concrete Contracts	1420 7th, Boise	60	\$1,800	BOISE
9/1/2012	6	2012 Misc. Concrete Contracts	504 Ada, Boise	32	\$960	BOISE
9/1/2012	6	2012 Misc. Concrete Contracts	1502 7th, Boise	54	\$1,620	BOISE
9/1/2012	6	2012 Misc. Concrete Contracts	2124 State, Boise	6	\$180	BOISE
9/1/2012	6	2012 Misc. Concrete Contracts	812 22nd, Boise	51	\$1,530	BOISE
9/1/2012	6	2012 Misc. Concrete Contracts	1510 7th, Boise	19	\$570	BOISE
9/1/2012	6	2012 Misc. Concrete Contracts	1514 6th, Boise	37	\$1,110	BOISE
9/1/2012	6	2012 Misc. Concrete Contracts	817 21st, Boise	34	\$1,020	BOISE
9/1/2012	6	2012 Misc. Concrete Contracts	2127 Ellis, Boise	14	\$420	BOISE
9/1/2012	6	2012 Misc. Concrete Contracts	601 Sherman, Boise	19	\$570	BOISE
9/1/2012	6	2012 Misc. Concrete Contracts	2201 Ellis, Boise	125	\$3,750	BOISE

9/1/2012	6	2012 Misc. Concrete Contracts	2201 Ellis, Boise	26	\$780	BOISE
9/1/2012	6	2012 Misc. Concrete Contracts	2201 Ellis, Boise	26	\$780	BOISE
9/1/2012	6	2012 Misc. Concrete Contracts	1521 5th, Boise	30	\$900	BOISE
9/1/2012	6	2012 Misc. Concrete Contracts	1518 6th, Boise	29	\$870	BOISE
9/1/2012	6	2012 Misc. Concrete Contracts	1520 6th, Boise	53	\$1,590	BOISE
9/1/2012	6	2012 Misc. Concrete Contracts	512 Sherman, Boise	9	\$270	BOISE
9/1/2012	6	2012 Misc. Concrete Contracts	1602 6th, Boise	168	\$5,040	BOISE
9/1/2012	6	2012 Misc. Concrete Contracts	1601 6th, Boise	27	\$810	BOISE
9/1/2012	6	2012 Misc. Concrete Contracts	1601 6th, Boise	16	\$480	BOISE
9/1/2012	6	2012 Misc. Concrete Contracts	2204 Ellis, Boise	58	\$1,740	BOISE
9/1/2012	6	2012 Misc. Concrete Contracts	1608 6th, Boise	24	\$720	BOISE
9/1/2012	6	2012 Misc. Concrete Contracts	1608 6th, Boise	11	\$330	BOISE
9/1/2012	6	2012 Misc. Concrete Contracts	2300 State (frontage), Boise	12	\$360	BOISE
9/1/2012	6	2012 Misc. Concrete Contracts	2300 State (frontage), Boise	25	\$750	BOISE
9/1/2012	6	2012 Misc. Concrete Contracts	905 21st, Boise	17	\$510	BOISE
9/1/2012	6	2012 Misc. Concrete Contracts	909 22nd, Boise	31	\$930	BOISE
9/1/2012	6	2012 Misc. Concrete Contracts	1613 6th, Boise	41	\$1,230	BOISE
9/1/2012	6	2012 Misc. Concrete Contracts	1612 7th, Boise	52	\$1,560	BOISE
9/1/2012	6	2012 Misc. Concrete Contracts	2218 Ellis, Boise	13	\$390	BOISE
9/1/2012	6	2012 Misc. Concrete Contracts	2318 State (frontage), Boise	6	\$180	BOISE
9/1/2012	6	2012 Misc. Concrete Contracts	2318 State (frontage), Boise	9	\$270	BOISE
9/1/2012	6	2012 Misc. Concrete Contracts	913 22nd, Boise	32	\$960	BOISE
9/1/2012	6	2012 Misc. Concrete Contracts	2322 State (frontage), Boise	20	\$600	BOISE
9/1/2012	6	2012 Misc. Concrete Contracts	2328 State (frontage), Boise	18	\$540	BOISE
9/1/2012	6	2012 Misc. Concrete Contracts	1619 6th, Boise	26	\$780	BOISE
9/1/2012	6	2012 Misc. Concrete Contracts	1620 7th, Boise	212	\$6,360	BOISE
9/1/2012	6	2012 Misc. Concrete Contracts	920 N. 20th, Boise	12	\$360	BOISE
9/1/2012	6	2012 Misc. Concrete Contracts	924 21st, Boise	65	\$1,950	BOISE
9/1/2012	6	2012 Misc. Concrete Contracts	2330 State (frontage), Boise	47	\$1,410	BOISE
9/1/2012	6	2012 Misc. Concrete Contracts	924 22nd, Boise	46	\$1,380	BOISE

9/1/2012	6	2012 Misc. Concrete Contracts	1001 21st, Boise	54	\$1,620	BOISE
9/1/2012	6	2012 Misc. Concrete Contracts	1002 22nd, Boise	94	\$2,820	BOISE
9/1/2012	6	2012 Misc. Concrete Contracts	1006 22nd, Boise	3	\$90	BOISE
9/1/2012	6	2012 Misc. Concrete Contracts	2334 State (frontage), Boise	22	\$660	BOISE
9/1/2012	6	2012 Misc. Concrete Contracts	1011 23rd, Boise	25	\$750	BOISE
9/1/2012	6	2012 Misc. Concrete Contracts	1010 22nd, Boise	9	\$270	BOISE
9/1/2012	6	2012 Misc. Concrete Contracts	1010 21st, Boise	21	\$630	BOISE
9/1/2012	6	2012 Misc. Concrete Contracts	1011 21st, Boise	23	\$690	BOISE
9/1/2012	6	2012 Misc. Concrete Contracts	2402 State (frontage), Boise	17	\$510	BOISE
9/1/2012	6	2012 Misc. Concrete Contracts	1015 23rd, Boise	11	\$330	BOISE
9/1/2012	6	2012 Misc. Concrete Contracts	1015 23rd, Boise	10	\$300	BOISE
9/1/2012	6	2012 Misc. Concrete Contracts	1012 22nd, Boise	27	\$810	BOISE
9/1/2012	6	2012 Misc. Concrete Contracts	1016 22nd, Boise	20	\$600	BOISE
9/1/2012	6	2012 Misc. Concrete Contracts	2418 State (frontage), Boise	6	\$180	BOISE
9/1/2012	6	2012 Misc. Concrete Contracts	2401 Ellis, Boise	39	\$1,170	BOISE
9/1/2012	6	2012 Misc. Concrete Contracts	1021 23rd, Boise	18	\$540	BOISE
9/1/2012	6	2012 Misc. Concrete Contracts	1020 21st, Boise	31	\$930	BOISE
9/1/2012	6	2012 Misc. Concrete Contracts	2426 State (frontage), Boise	12	\$360	BOISE
9/1/2012	6	2012 Misc. Concrete Contracts	1016 21st, Boise	58	\$1,740	BOISE
9/1/2012	6	2012 Misc. Concrete Contracts	1020 22nd, Boise	40	\$1,200	BOISE
9/1/2012	6	2012 Misc. Concrete Contracts	1201 N. 17th, Boise	14	\$420	BOISE
9/1/2012	6	2012 Misc. Concrete Contracts	1205 N. 17th, Boise	19	\$570	BOISE
9/1/2012	6	2012 Misc. Concrete Contracts	1202 N. 18th, Boise	29	\$870	BOISE
9/1/2012	6	2012 Misc. Concrete Contracts	1101 20th, Boise	20	\$600	BOISE
9/1/2012	6	2012 Misc. Concrete Contracts	1102 21st, Boise	46	\$1,380	BOISE
9/1/2012	6	2012 Misc. Concrete Contracts	1103 21st, Boise	24	\$720	BOISE
9/1/2012	6	2012 Misc. Concrete Contracts	2114 Eastman, Boise	6	\$180	BOISE
9/1/2012	6	2012 Misc. Concrete Contracts	1101 22nd, Boise	18	\$540	BOISE
9/1/2012	6	2012 Misc. Concrete Contracts	1109 24th, Boise	6	\$180	BOISE
9/1/2012	6	2012 Misc. Concrete Contracts	2430 State (frontage), Boise	13	\$390	BOISE

9/1/2012	6	2012 Misc. Concrete Contracts	1106 23rd, Boise	12	\$360	BOISE
9/1/2012	6	2012 Misc. Concrete Contracts	1212 N. 18th, Boise	6	\$180	BOISE
9/1/2012	6	2012 Misc. Concrete Contracts	1106 22nd, Boise	6	\$180	BOISE
9/1/2012	6	2012 Misc. Concrete Contracts	1109 20th, Boise	46	\$1,380	BOISE
9/1/2012	6	2012 Misc. Concrete Contracts	2510 State (frontage), Boise	23	\$690	BOISE
9/1/2012	6	2012 Misc. Concrete Contracts	1112 22nd, Boise	13	\$390	BOISE
9/1/2012	6	2012 Misc. Concrete Contracts	2518 State (frontage), Boise	13	\$390	BOISE
9/1/2012	6	2012 Misc. Concrete Contracts	2119 Brumback, Boise	21	\$630	BOISE
9/1/2012	6	2012 Misc. Concrete Contracts	1117 24th, Boise	80	\$2,400	BOISE
9/1/2012	6	2012 Misc. Concrete Contracts	1117 24th, Boise	20	\$600	BOISE
9/1/2012	6	2012 Misc. Concrete Contracts	1120 23rd, Boise	18	\$540	BOISE
9/1/2012	6	2012 Misc. Concrete Contracts	1213 N. 17th, Boise	14	\$420	BOISE
9/1/2012	6	2012 Misc. Concrete Contracts	1119 20th, Boise	80	\$2,400	BOISE
9/1/2012	6	2012 Misc. Concrete Contracts	1119 20th, Boise	80	\$2,400	BOISE
9/1/2012	6	2012 Misc. Concrete Contracts	1119 21st, Boise	64	\$1,920	BOISE
9/1/2012	6	2012 Misc. Concrete Contracts	2115 Brumback, Boise	19	\$570	BOISE
9/1/2012	6	2012 Misc. Concrete Contracts	2209 Brumback, Boise	51	\$1,530	BOISE
9/1/2012	6	2012 Misc. Concrete Contracts	2209 Brumbach, BOISE	10	\$300	BOISE
9/1/2012	6	2012 Misc. Concrete Contracts	1115 22nd, Boise	12	\$360	BOISE
1/18/2012	5	ACHD UTILITY CREW	WORK ORDER	8	\$240	BOISE
9/1/2012	6	2012 Misc. Concrete Contracts	2118 Brumback, Boise	19	\$570	BOISE
9/1/2012	6	2012 Misc. Concrete Contracts	2411 Brumback, Boise	40	\$1,200	BOISE
9/1/2012	6	2012 Misc. Concrete Contracts	1203 20th, Boise	118	\$3,540	BOISE
9/1/2012	6	2012 Misc. Concrete Contracts	1207 20th, Boise	21	\$630	BOISE
9/1/2012	6	2012 Misc. Concrete Contracts	2120 Brumback, Boise	63	\$1,890	BOISE
9/1/2012	6	2012 Misc. Concrete Contracts	1205 22nd, Boise	24	\$720	BOISE
9/1/2012	6	2012 Misc. Concrete Contracts	1201 23rd, Boise	6	\$180	BOISE
9/1/2012	6	2012 Misc. Concrete Contracts	1205 23rd, Boise	25	\$750	BOISE
9/1/2012	6	2012 Misc. Concrete Contracts	1201 24th, Boise	18	\$540	BOISE
9/1/2012	6	2012 Misc. Concrete Contracts	1207 24th, Boise	36	\$1,080	BOISE

9/1/2012	6	2012 Misc. Concrete Contracts	1203 25th, Boise	6	\$180	BOISE
9/1/2012	6	2012 Misc. Concrete Contracts	2522 State, Boise	12	\$360	BOISE
9/1/2012	6	2012 Misc. Concrete Contracts	1206 22nd, Boise	12	\$360	BOISE
9/1/2012	6	2012 Misc. Concrete Contracts	1204 23rd, Boise	12	\$360	BOISE
11/1/2012	5	ACHD UTILITY CREW	WORK ORDER	8	\$240	MERIDIAN
9/1/2012	6	2012 Misc. Concrete Contracts	1206 25th, Boise	6	\$180	BOISE
9/1/2012	6	2012 Misc. Concrete Contracts	2517 Ellis, Boise	14	\$420	BOISE
9/1/2012	6	2012 Misc. Concrete Contracts	1208 22nd, Boise	8	\$240	BOISE
9/1/2012	6	2012 Misc. Concrete Contracts	2521 Ellis, Boise	28	\$840	BOISE
9/1/2012	6	2012 Misc. Concrete Contracts	1209 21st, Boise	30	\$900	BOISE
9/1/2012	6	2012 Misc. Concrete Contracts	1213 23rd, Boise	5	\$150	BOISE
9/1/2012	6	2012 Misc. Concrete Contracts	1209 24th, Boise	38	\$1,140	BOISE
9/1/2012	6	2012 Misc. Concrete Contracts	1210 22nd, Boise	18	\$540	BOISE
9/1/2012	6	2012 Misc. Concrete Contracts	1313 N. 17th, Boise	9	\$270	BOISE
9/1/2012	6	2012 Misc. Concrete Contracts	1209 25th, Boise	6	\$180	BOISE
9/1/2012	6	2012 Misc. Concrete Contracts	2525 Ellis, Boise	18	\$540	BOISE
9/1/2012	6	2012 Misc. Concrete Contracts	1211 25th, Boise	5	\$150	BOISE
9/1/2012	6	2012 Misc. Concrete Contracts	1215 22nd, Boise	18	\$540	BOISE
9/1/2012	6	2012 Misc. Concrete Contracts	1213 25th, Boise	47	\$1,410	BOISE
9/1/2012	6	2012 Misc. Concrete Contracts	1215 20th, Boise	50	\$1,500	BOISE
9/1/2012	6	2012 Misc. Concrete Contracts	1217 20th, Boise	9	\$270	BOISE
9/1/2012	6	2012 Misc. Concrete Contracts	1219 21st, Boise	58	\$1,740	BOISE
9/1/2012	6	2012 Misc. Concrete Contracts	1218 23rd, Boise	42	\$1,260	BOISE
9/1/2012	5	2012 Misc. Concrete Contracts	1666 Ridenbaugh, Boise	21	\$630	BOISE
9/1/2012	6	2012 Misc. Concrete Contracts	1301 20th, Boise	80	\$2,400	BOISE
9/1/2012	6	2012 Misc. Concrete Contracts	1302 21st, Boise	7	\$210	BOISE
9/1/2012	6	2012 Misc. Concrete Contracts	1303 21st, Boise	48	\$1,440	BOISE
9/1/2012	6	2012 Misc. Concrete Contracts	1305 21st, Boise	23	\$690	BOISE
9/1/2012	6	2012 Misc. Concrete Contracts	1306 22nd, Boise	10	\$300	BOISE
9/1/2012	6	2012 Misc. Concrete Contracts	1303 24th, Boise	23	\$690	BOISE

9/1/2012	6	2012 Misc. Concrete Contracts	2615 Ellis, Boise	15	\$450	BOISE
9/1/2012	6	2012 Misc. Concrete Contracts	1305 25th, Boise	37	\$1,110	BOISE
9/1/2012	5	2012 Misc. Concrete Contracts	1406 N. 17th, Boise	16	\$480	BOISE
9/1/2012	5	2012 Misc. Concrete Contracts	1406 N. 17th, Boise	22	\$660	BOISE
9/1/2012	6	2012 Misc. Concrete Contracts	1307 20th, Boise	29	\$870	BOISE
9/1/2012	6	2012 Misc. Concrete Contracts	1308 21st, Boise	11	\$330	BOISE
9/1/2012	6	2012 Misc. Concrete Contracts	1308 21st, Boise	11	\$330	BOISE
9/1/2012	6	2012 Misc. Concrete Contracts	1307 25th, Boise	50	\$1,500	BOISE
9/1/2012	6	2012 Misc. Concrete Contracts	1306 24th, Boise	12	\$360	BOISE
9/1/2012	6	2012 Misc. Concrete Contracts	1306 24th, Boise	13	\$390	BOISE
9/1/2012	6	2012 Misc. Concrete Contracts	2623 Ellis, Boise	42	\$1,260	BOISE
9/1/2012	6	2012 Misc. Concrete Contracts	1308 22nd, Boise	12	\$360	BOISE
9/1/2012	6	2012 Misc. Concrete Contracts	1509 Harrison, Boise	15	\$450	BOISE
9/1/2012	6	2012 Misc. Concrete Contracts	1310 21st, Boise	7	\$210	BOISE
9/1/2012	5	2012 Misc. Concrete Contracts	1412 N. 17th, Boise	16	\$480	BOISE
9/1/2012	6	2012 Misc. Concrete Contracts	1309 21st, Boise	12	\$360	BOISE
9/1/2012	6	2012 Misc. Concrete Contracts	1311 23rd, Boise	36	\$1,080	BOISE
9/1/2012	6	2012 Misc. Concrete Contracts	2627 Ellis, Boise	18	\$540	BOISE
9/1/2012	6	2012 Misc. Concrete Contracts	1309 25th, Boise	31	\$930	BOISE
9/1/2012	6	2012 Misc. Concrete Contracts	1311 24th, Boise	52	\$1,560	BOISE
9/1/2012	6	2012 Misc. Concrete Contracts	1314 24th, Boise	21	\$630	BOISE
9/1/2012	6	2012 Misc. Concrete Contracts	2629 Ellis, Boise	13	\$390	BOISE
9/1/2012	6	2012 Misc. Concrete Contracts	2629 Ellis, Boise	9	\$270	BOISE
9/1/2012	6	2012 Misc. Concrete Contracts	1316 21st, Boise	37	\$1,110	BOISE
9/1/2012	6	2012 Misc. Concrete Contracts	1315 21st, Boise	44	\$1,320	BOISE
9/1/2012	5	2012 Misc. Concrete Contracts	1414 N. 17th, Boise	5	\$150	BOISE
9/1/2012	6	2012 Misc. Concrete Contracts	1314 25th, Boise	31	\$930	BOISE
9/1/2012	6	2012 Misc. Concrete Contracts	1311 25th, Boise	5	\$150	BOISE
9/1/2012	6	2012 Misc. Concrete Contracts	2615 Lemp, Boise	33	\$990	BOISE
9/1/2012	6	2012 Misc. Concrete Contracts	2635 Ellis, Boise	37	\$1,110	BOISE

9/1/2012	6	2012 Misc. Concrete Contracts	2209 Ellis, Boise	10	\$300	BOISE
9/1/2012	6	2012 Misc. Concrete Contracts	1320 24th, Boise	24	\$720	BOISE
9/1/2012	6	2012 Misc. Concrete Contracts	1319 20th, Boise	113	\$3,390	BOISE
9/1/2012	6	2012 Misc. Concrete Contracts	2637 Ellis, Boise	23	\$690	BOISE
9/1/2012	6	2012 Misc. Concrete Contracts	2103 Lemp, Boise	22	\$660	BOISE
9/1/2012	6	2012 Misc. Concrete Contracts	1312 23rd, Boise	36	\$1,080	BOISE
9/1/2012	6	2012 Misc. Concrete Contracts	1402 23rd, Boise	42	\$1,260	BOISE
9/1/2012	6	2012 Misc. Concrete Contracts	1401 20th, Boise	139	\$4,170	BOISE
9/1/2012	6	2012 Misc. Concrete Contracts	1407 20th, Boise	12	\$360	BOISE
9/1/2012	6	2012 Misc. Concrete Contracts	2070 Lemp, Boise	26	\$780	BOISE
9/1/2012	6	2012 Misc. Concrete Contracts	1414 21st, Boise	30	\$900	BOISE
9/1/2012	6	2012 Misc. Concrete Contracts	2100 Lemp, Boise	54	\$1,620	BOISE
9/1/2012	6	2012 Misc. Concrete Contracts	2500 Lemp, Boise	52	\$1,560	BOISE
9/1/2012	6	2012 Misc. Concrete Contracts	1402 24th, Boise	65	\$1,950	BOISE
9/1/2012	6	2012 Misc. Concrete Contracts	1405 21st, Boise	5	\$150	BOISE
9/1/2012	6	2012 Misc. Concrete Contracts	1405 22nd, Boise	50	\$1,500	BOISE
9/1/2012	6	2012 Misc. Concrete Contracts	1513 N. 17th, Boise	10	\$300	BOISE
9/1/2012	6	2012 Misc. Concrete Contracts	1513 N. 17th, Boise	31	\$930	BOISE
9/1/2012	6	2012 Misc. Concrete Contracts	1404 23rd, Boise	44	\$1,320	BOISE
9/1/2012	6	2012 Misc. Concrete Contracts	1404 23rd, Boise	10	\$300	BOISE
9/1/2012	6	2012 Misc. Concrete Contracts	1407 25th, Boise	67	\$2,010	BOISE
9/1/2012	6	2012 Misc. Concrete Contracts	1406 22nd, Boise	48	\$1,440	BOISE
9/1/2012	6	2012 Misc. Concrete Contracts	1404 25th, Boise	51	\$1,530	BOISE
9/1/2012	6	2012 Misc. Concrete Contracts	1416 21st, Boise	25	\$750	BOISE
9/1/2012	6	2012 Misc. Concrete Contracts	1411 21st, Boise	24	\$720	BOISE
9/1/2012	6	2012 Misc. Concrete Contracts	1409 22nd, Boise	12	\$360	BOISE
9/1/2012	6	2012 Misc. Concrete Contracts	1411 25th, Boise	25	\$750	BOISE
9/1/2012	6	2012 Misc. Concrete Contracts	1416 24th, Boise	48	\$1,440	BOISE
9/1/2012	6	2012 Misc. Concrete Contracts	1412 23rd, Boise	58	\$1,740	BOISE
9/1/2012	6	2012 Misc. Concrete Contracts	1412 23rd, Boise	16	\$480	BOISE

9/1/2012	6	2012 Misc. Concrete Contracts	1412 22nd, Boise	18	\$540	BOISE
9/1/2012	6	2012 Misc. Concrete Contracts	1412 22nd, Boise	6	\$180	BOISE
9/1/2012	6	2012 Misc. Concrete Contracts	1414 25th, Boise	29	\$870	BOISE
9/1/2012	6	2012 Misc. Concrete Contracts	1419 20th, Boise	156	\$4,680	BOISE
9/1/2012	6	2012 Misc. Concrete Contracts	1420 25th, Boise	61	\$1,830	BOISE
9/1/2012	6	2012 Misc. Concrete Contracts	1421 21st, Boise	70	\$2,100	BOISE
9/1/2012	6	2012 Misc. Concrete Contracts	1421 N. 21st, Boise	70	\$2,100	BOISE
9/1/2012	6	2012 Misc. Concrete Contracts	1415 21st, Boise	22	\$660	BOISE
9/1/2012	6	2012 Misc. Concrete Contracts	1420 N. 21st, Boise	12	\$360	BOISE
9/1/2012	6	2012 Misc. Concrete Contracts	1420 21st, Boise	24	\$720	BOISE
9/1/2012	6	2012 Misc. Concrete Contracts	1415 22nd, Boise	14	\$420	BOISE
9/1/2012	6	2012 Misc. Concrete Contracts	2211 Heron, Boise	30	\$900	BOISE
9/1/2012	6	2012 Misc. Concrete Contracts	1419 24th, Boise	34	\$1,020	BOISE
9/1/2012	6	2012 Misc. Concrete Contracts	2601 Heron, Boise	18	\$540	BOISE
9/1/2012	6	2012 Misc. Concrete Contracts	2615 Heron, Boise	78	\$2,340	BOISE
9/1/2012	6	2012 Misc. Concrete Contracts	2705 Heron, Boise	36	\$1,080	BOISE
9/1/2012	6	2012 Misc. Concrete Contracts	1502 N. 21st, Boise	83	\$2,490	BOISE
9/1/2012	6	2012 Misc. Concrete Contracts	1502 N. 21st, Boise	18	\$540	BOISE
9/1/2012	6	2012 Misc. Concrete Contracts	1504 21st, Boise	35	\$1,050	BOISE
9/1/2012	6	2012 Misc. Concrete Contracts	1501 20th, Boise	35	\$1,050	BOISE
9/1/2012	6	2012 Misc. Concrete Contracts	1501 21st, Boise	54	\$1,620	BOISE
9/1/2012	6	2012 Misc. Concrete Contracts	1502 24th, Boise	19	\$570	BOISE
9/1/2012	6	2012 Misc. Concrete Contracts	1507 24th, Boise	39	\$1,170	BOISE
9/1/2012	6	2012 Misc. Concrete Contracts	2404 Heron, Boise	19	\$570	BOISE
9/1/2012	6	2012 Misc. Concrete Contracts	1501 24th, Boise	30	\$900	BOISE
9/1/2012	6	2012 Misc. Concrete Contracts	1505 20th, Boise	17	\$510	BOISE
9/1/2012	6	2012 Misc. Concrete Contracts	1506 23rd, Boise	31	\$930	BOISE
9/1/2012	6	2012 Misc. Concrete Contracts	1507 22nd, Boise	36	\$1,080	BOISE
7/13/2012	5	ACHD UTILITY CREW	WORK ORDER	8	\$240	BOISE
9/1/2012	6	2012 Misc. Concrete Contracts	1511 20th, Boise	27	\$810	BOISE

9/1/2012	6	2012 Misc. Concrete Contracts	1511 21st, Boise	72	\$2,160	BOISE
9/1/2012	6	2012 Misc. Concrete Contracts	1510 22nd, Boise	18	\$540	BOISE
9/1/2012	6	2012 Misc. Concrete Contracts	1511 24th, Boise	13	\$390	BOISE
9/1/2012	6	2012 Misc. Concrete Contracts	1514 25th, Boise	85	\$2,550	BOISE
9/1/2012	6	2012 Misc. Concrete Contracts	1513 22nd, Boise	22	\$660	BOISE
9/1/2012	6	2012 Misc. Concrete Contracts	1515 20th, Boise	16	\$480	BOISE
9/1/2012	6	2012 Misc. Concrete Contracts	1514 22nd, Boise	12	\$360	BOISE
9/1/2012	6	2012 Misc. Concrete Contracts	1514 23rd, Boise	6	\$180	BOISE
9/1/2012	6	2012 Misc. Concrete Contracts	1526 25th, Boise	18	\$540	BOISE
9/1/2012	6	2012 Misc. Concrete Contracts	1519 20th, Boise	58	\$1,740	BOISE
9/1/2012	6	2012 Misc. Concrete Contracts	1516 21st, Boise	41	\$1,230	BOISE
9/1/2012	6	2012 Misc. Concrete Contracts	2015 Hazel, Boise	67	\$2,010	BOISE
9/1/2012	6	2012 Misc. Concrete Contracts	1519 21st, Boise	67	\$2,010	BOISE
9/1/2012	6	2012 Misc. Concrete Contracts	1516 22nd, Boise	22	\$660	BOISE
9/1/2012	6	2012 Misc. Concrete Contracts	1519 24th, Boise	22	\$660	BOISE
9/1/2012	6	2012 Misc. Concrete Contracts	1515 24th, Boise	64	\$1,920	BOISE
9/1/2012	6	2012 Misc. Concrete Contracts	1601 20th, Boise	12	\$360	BOISE
9/1/2012	6	2012 Misc. Concrete Contracts	1601 21st, Boise	33	\$990	BOISE
9/1/2012	6	2012 Misc. Concrete Contracts	1606 22nd, Boise	7	\$210	BOISE
9/1/2012	6	2012 Misc. Concrete Contracts	1602 24th, Boise	80	\$2,400	BOISE
9/1/2012	6	2012 Misc. Concrete Contracts	1606 23rd, Boise	18	\$540	BOISE
9/1/2012	6	2012 Misc. Concrete Contracts	1602 23rd, Boise	10	\$300	BOISE
9/1/2012	6	2012 Misc. Concrete Contracts	1705 N. 17th, Boise	51	\$1,530	BOISE
9/1/2012	6	2012 Misc. Concrete Contracts	1605 21st, Boise	21	\$630	BOISE
9/1/2012	6	2012 Misc. Concrete Contracts	1605 22nd, Boise	6	\$180	BOISE
9/1/2012	6	2012 Misc. Concrete Contracts	1606 24th, Boise	5	\$150	BOISE
9/1/2012	6	2012 Misc. Concrete Contracts	1611 21st, Boise	21	\$630	BOISE
9/1/2012	6	2012 Misc. Concrete Contracts	1610 22nd, Boise	14	\$420	BOISE
9/1/2012	6	2012 Misc. Concrete Contracts	1615 20th, Boise	15	\$450	BOISE
9/1/2012	6	2012 Misc. Concrete Contracts	1614 22nd, Boise	64	\$1,920	BOISE

9/1/2012	6	2012 Misc. Concrete Contracts	1615 22nd, Boise	28	\$840	BOISE
9/1/2012	6	2012 Misc. Concrete Contracts	1619 25th, Boise	33	\$990	BOISE
9/1/2012	6	2012 Misc. Concrete Contracts	1619 20th, Boise	50	\$1,500	BOISE
9/1/2012	6	2012 Misc. Concrete Contracts	1618 21st, Boise	35	\$1,050	BOISE
9/1/2012	6	2012 Misc. Concrete Contracts	1619 21st, Boise	59	\$1,770	BOISE
9/1/2012	6	2012 Misc. Concrete Contracts	1617 21st, Boise	16	\$480	BOISE
9/1/2012	6	2012 Misc. Concrete Contracts	1610 24th, Boise	25	\$750	BOISE
9/1/2012	6	2012 Misc. Concrete Contracts	1702 21st, Boise	16	\$480	BOISE
9/1/2012	6	2012 Misc. Concrete Contracts	1700 22nd, Boise	24	\$720	BOISE
9/1/2012	6	2012 Misc. Concrete Contracts	1701 22nd, Boise	12	\$360	BOISE
9/1/2012	6	2012 Misc. Concrete Contracts	1702 23rd, Boise	13	\$390	BOISE
9/1/2012	6	2012 Misc. Concrete Contracts	1701 20th, Boise	83	\$2,490	BOISE
9/1/2012	6	2012 Misc. Concrete Contracts	2316 Bella, Boise	32	\$960	BOISE
9/1/2012	6	2012 Misc. Concrete Contracts	2320 Bella, Boise	42	\$1,260	BOISE
9/1/2012	6	2012 Misc. Concrete Contracts	2424 Bella, Boise	147	\$4,410	BOISE
9/1/2012	6	2012 Misc. Concrete Contracts	1701 25th, Boise	30	\$900	BOISE
9/1/2012	6	2012 Misc. Concrete Contracts	1701 21st, Boise	21	\$630	BOISE
9/1/2012	6	2012 Misc. Concrete Contracts	1703 23rd, Boise	28	\$840	BOISE
9/1/2012	6	2012 Misc. Concrete Contracts	2402 Bella, Boise	15	\$450	BOISE
9/1/2012	6	2012 Misc. Concrete Contracts	1703 25th, Boise	7	\$210	BOISE
9/1/2012	6	2012 Misc. Concrete Contracts	1706 21st, Boise	27	\$810	BOISE
9/1/2012	6	2012 Misc. Concrete Contracts	1704 25th, Boise	14	\$420	BOISE
9/1/2012	6	2012 Misc. Concrete Contracts	1707 21st, Boise	33	\$990	BOISE
9/1/2012	6	2012 Misc. Concrete Contracts	1708 22nd, Boise	15	\$450	BOISE
9/1/2012	6	2012 Misc. Concrete Contracts	1709 20th, Boise	28	\$840	BOISE
9/1/2012	6	2012 Misc. Concrete Contracts	1710 21st, Boise	30	\$900	BOISE
9/1/2012	6	2012 Misc. Concrete Contracts	1710 23rd, Boise	33	\$990	BOISE
9/1/2012	6	2012 Misc. Concrete Contracts	1711 21st, Boise	19	\$570	BOISE
9/1/2012	6	2012 Misc. Concrete Contracts	1715 22nd, Boise	24	\$720	BOISE
9/1/2012	6	2012 Misc. Concrete Contracts	1712 21st, Boise	12	\$360	BOISE

9/1/2012	6	2012 Misc. Concrete Contracts	1717 21st, Boise	9	\$270	BOISE
9/1/2012	6	2012 Misc. Concrete Contracts	1714 25th, Boise	4	\$120	BOISE
9/1/2012	6	2012 Misc. Concrete Contracts	1718 25th, Boise	40	\$1,200	BOISE
9/1/2012	6	2012 Misc. Concrete Contracts	1718 25th, Boise	12	\$360	BOISE
9/1/2012	6	2012 Misc. Concrete Contracts	1715 25th, Boise	4	\$120	BOISE
9/1/2012	6	2012 Misc. Concrete Contracts	1718 21st, Boise	13	\$390	BOISE
9/1/2012	6	2012 Misc. Concrete Contracts	1714 23rd, Boise	9	\$270	BOISE
9/1/2012	6	2012 Misc. Concrete Contracts	1919 N. 18th, Boise	12	\$360	BOISE
9/1/2012	6	2012 Misc. Concrete Contracts	1919 N. 18th, Boise	54	\$1,620	BOISE
9/1/2012	6	2012 Misc. Concrete Contracts	1925 N. 18th, Boise	3	\$90	BOISE
4/9/2012	5	ACHD UTILITY CREW	Work Order	8	\$240	BOISE
3/12/2012	5	ACHD UTILITY CREW	WORK ORDER	10	\$300	BOISE
9/1/2012	5	2012 Misc. Concrete-Remove Driveway, install sw&rolled curb	BRIDGETOWER SUB IMPROVEMENTS	15	\$450	MERIDIAN
9/1/2012	5	2012 Misc. Concrete-Remove Driveway, install sw&rolled curb	BRIDGETOWER SUB IMPROVEMENTS	15	\$450	MERIDIAN
9/1/2012	5	2012 Misc. Concrete-Remove Driveway, install sw&rolled curb	BRIDGETOWER SUB IMPROVEMENTS	15	\$450	MERIDIAN
9/1/2012	5	2012 Misc. Concrete-Remove Driveway, install sw&rolled curb	BRIDGETOWER SUB IMPROVEMENTS	15	\$450	MERIDIAN
2/10/2012	5	ACHD UTILITY CREW	WORK ORDER	12	\$360	BOISE
9/1/2012	5	2012 Misc. Concrete-Remove Driveway, install sw&rolled curb	BRIDGETOWER SUB IMPROVEMENTS	15	\$450	MERIDIAN
5/1/2012	5	ACHD UTILITY CREW	Work Order	8	\$240	BOISE
5/1/2012	5	ACHD UTILITY CREW	Work Order	8	\$240	BOISE
9/1/2012	4	2012 Misc. Concrete Contracts	3582 La Fontana, Boise	25	\$750	BOISE
4/16/2012	5	ACHD UTILITY CREW	Work Order	8	\$240	BOISE
7/3/2012	5	ACHD UTILITY CREW	Work Order	8	\$240	BOISE
9/1/2012	6	2012 Misc. Concrete Contracts	2312 State (frontage), Boise	18	\$540	
9/1/2012	4	2012 Misc. Concrete Contracts	239 Winged Foot, Eagle	23	\$690	EAGLE
9/1/2012	4	2012 Misc. Concrete Contracts	307 Winged Foot, Eagle	6	\$180	EAGLE
9/1/2012	4	2012 Misc. Concrete Contracts	348 Winged Foot, Eagle	16	\$480	EAGLE
9/1/2012	4	2012 Misc. Concrete Contracts	409 Winged Foot, Eagle	16	\$480	EAGLE

9/1/2012	4	2012 Misc. Concrete Contracts	443 Winged Foot, Eagle	17	\$510	EAGLE
9/1/2012	4	2012 Misc. Concrete Contracts	681 Spyglass, Eagle	50	\$1,500	EAGLE
9/1/2012	4	2012 Misc. Concrete Contracts	687 Spyglass, Eagle	24	\$720	EAGLE
9/1/2012	4	2012 Misc. Concrete Contracts	669 Spyglass, Eagle	5	\$150	EAGLE
9/1/2012	4	2012 Misc. Concrete Contracts	663 Spyglass, Eagle	17	\$510	EAGLE
9/1/2012	4	2012 Misc. Concrete Contracts	659 Spyglass, Eagle	22	\$660	EAGLE
9/1/2012	4	2012 Misc. Concrete Contracts	668 Spyglass, Eagle	5	\$150	EAGLE
9/1/2012	4	2012 Misc. Concrete Contracts	662 Spyglass, Eagle	7	\$210	EAGLE
9/1/2012	7	2012 Misc. Concrete Contracts	493 Moraine Pl, Eagle	21	\$630	EAGLE
9/1/2012	4	2012 Misc. Concrete Contracts	East of Eagle Hills/Pebble Beach, EAGLE	16	\$480	EAGLE
9/1/2012	4	2012 Misc. Concrete Contracts	644 Spyglass, Eagle	16	\$480	EAGLE
9/1/2012	4	2012 Misc. Concrete Contracts	555 Eagle Hills, Eagle	15	\$450	EAGLE
9/1/2012	4	2012 Misc. Concrete Contracts	668 Eagle Hills, Eagle	60	\$1,800	EAGLE
9/1/2012	4	2012 Misc. Concrete Contracts	667 Eagle Hills, Eagle	8	\$240	EAGLE
9/1/2012	4	2012 Misc. Concrete Contracts	687 Eagle Hills, Eagle	61	\$1,830	EAGLE
9/1/2012	4	2012 Misc. Concrete Contracts	711 Eagle Hills, Eagle	4	\$120	EAGLE
9/1/2012	5	2012 Misc. Concrete Contracts	2239 Forest Grove, Eagle	13	\$390	EAGLE
9/1/2012	5	2012 Misc. Concrete Contracts	2201 Forest Grove, Eagle	40	\$1,200	EAGLE
9/1/2012	5	2012 Misc. Concrete Contracts	617 Stierman, Eagle	9	\$270	EAGLE
9/1/2012	4	2012 Misc. Concrete Contracts	1384 Medinah, Eagle	4	\$120	EAGLE
9/1/2012	4	2012 Misc. Concrete Contracts	1411 Medinah, Eagle	22	\$660	EAGLE
9/1/2012	4	2012 Misc. Concrete Contracts	756 Eagle Hills, Eagle	82	\$2,460	EAGLE
9/1/2012	4	2012 Misc. Concrete Contracts	1449 Medinah, Eagle	5	\$150	EAGLE
9/1/2012	4	2012 Misc. Concrete Contracts	1460 Medinah, Eagle	12	\$360	EAGLE
9/1/2012	4	2012 Misc. Concrete Contracts	1444 Medinah, Eagle	34	\$1,020	EAGLE
9/1/2012	4	2012 Misc. Concrete Contracts	760 Eagle Hills, Eagle	20	\$600	EAGLE
9/1/2012	4	2012 Misc. Concrete Contracts	759 Eagle Hills, Eagle	58	\$1,740	EAGLE
9/1/2012	4	2012 Misc. Concrete Contracts	764 Eagle Hills, Eagle	5	\$150	EAGLE
9/1/2012	4	2012 Misc. Concrete Contracts	771 Eagle Hills, Eagle	5	\$150	EAGLE
9/1/2012	4	2012 Misc. Concrete Contracts	808 Eagle Hills, Eagle	4	\$120	EAGLE

9/1/2012	4	2012 Misc. Concrete Contracts	806 Eagle Hills, Eagle	10	\$300	EAGLE
9/1/2012	4	2012 Misc. Concrete Contracts	804 Eagle Hills, Eagle	23	\$690	EAGLE
9/1/2012	4	2012 Misc. Concrete Contracts	798 Eagle Hills, Eagle	6	\$180	EAGLE
9/1/2012	4	2012 Misc. Concrete Contracts	1355 Cerramar Ct, Eagle	20	\$600	EAGLE
9/1/2012	4	2012 Misc. Concrete Contracts	1293 Cerramar Ct, Eagle	24	\$720	EAGLE
9/1/2012	4	2012 Misc. Concrete Contracts	1269 Cerramar Ct, Eagle	8	\$240	EAGLE
9/1/2012	4	2012 Misc. Concrete Contracts	1203 Cerramar Ct, Eagle	28	\$840	EAGLE
9/1/2012	4	2012 Misc. Concrete Contracts	1338 Cerramar Ct, Eagle	20	\$600	EAGLE
9/1/2012	4	2012 Misc. Concrete Contracts	1278 Cerramar Ct, Eagle	15	\$450	EAGLE
9/1/2012	4	2012 Misc. Concrete Contracts	1292 Cerramar Ct, Eagle	18	\$540	EAGLE
9/1/2012	4	2012 Misc. Concrete Contracts	876 Eagle Hills, Eagle	8	\$240	EAGLE
9/1/2012	4	2012 Misc. Concrete Contracts	918 Eagle Hills, Eagle	15	\$450	EAGLE
9/1/2012	4	2012 Misc. Concrete Contracts	930 Eagle Hills, Eagle	12	\$360	EAGLE
9/1/2012	4	2012 Misc. Concrete Contracts	945 Eagle Hills, Eagle	46	\$1,380	EAGLE
9/1/2012	4	2012 Misc. Concrete Contracts	960 Eagle Hills, Eagle	25	\$750	EAGLE
9/1/2012	4	2012 Misc. Concrete Contracts	977 Eagle Hills, Eagle	12	\$360	EAGLE
9/1/2012	4	2012 Misc. Concrete Contracts	747 Eagle Hills, Eagle	10	\$300	EAGLE
9/1/2012	4	2012 Misc. Concrete Contracts	567 Eagle Hills, Eagle	5	\$150	EAGLE
9/1/2012	4	2012 Misc. Concrete Contracts	589 Eagle Hills, Eagle	5	\$150	EAGLE
9/1/2012	4	2012 Misc. Concrete Contracts	591 Eagle Hills, Eagle	11	\$330	EAGLE
9/1/2012	4	2012 Misc. Concrete Contracts	999 Eagle Hills, Eagle	9	\$270	EAGLE
9/1/2012	4	2012 Misc. Concrete Contracts	1010 Eagle Hills, Eagle	52	\$1,560	EAGLE
9/1/2012	4	2012 Misc. Concrete Contracts	821 Farrington, Eagle	10	\$300	EAGLE
9/1/2012	4	2012 Misc. Concrete Contracts	1046 Eagle Hills, Eagle	16	\$480	EAGLE
9/1/2012	4	2012 Misc. Concrete Contracts	824 Farrington, Eagle	60	\$1,800	EAGLE
9/1/2012	4	2012 Misc. Concrete Contracts	1062 Eagle Hills, Eagle	9	\$270	EAGLE
9/1/2012	4	2012 Misc. Concrete Contracts	855 Farrington, Eagle	23	\$690	EAGLE
9/1/2012	4	2012 Misc. Concrete Contracts	827 Farrington, Eagle	4	\$120	EAGLE
9/1/2012	4	2012 Misc. Concrete Contracts	830 Farrington, Eagle	5	\$150	EAGLE
9/1/2012	4	2012 Misc. Concrete Contracts	904 Farrington, Eagle	14	\$420	EAGLE

9/1/2012	4	2012 Misc. Concrete Contracts	854 Farrington, Eagle	20	\$600	EAGLE
9/1/2012	4	2012 Misc. Concrete Contracts	968 Farrington, Eagle	41	\$1,230	EAGLE
9/1/2012	4	2012 Misc. Concrete Contracts	1116 Eagle Hills, Eagle	18	\$540	EAGLE
9/1/2012	4	2012 Misc. Concrete Contracts	990 Farrington, Eagle	9	\$270	EAGLE
9/1/2012	4	2012 Misc. Concrete Contracts	1238 Eagle Hills, Eagle	29	\$870	EAGLE
4/6/2012	5	ACHD UTILITY CREW	Work Order	26	\$780	EAGLE
9/1/2012	6	2012 Misc. Concrete Contracts	1317 5th, Boise	31	\$930	EAGLE
9/1/2012	6	2012 Misc. Concrete Contracts	1019 5th, Boise	41	\$1,230	EAGLE
				TOTAL	\$813,090	

Fiscal Year 2012 ACHD Sidewalk Projects

GPS DATE	WIDTH	PROJECT NUMBER	PROJECT DESCRIPTION	PROJECT ORIGIN	LENGTH	ESTIMATED COST	CITY/COUNTY
6/22/2012	5	810013.015	3RD ST - CENTER TO STAR	ACHD PROJECT	367	\$11,009	STAR
6/22/2012	5	810013.015	3RD STREET - CENTER TO STAR	ACHD PROJECT	732	\$21,957	STAR
12/19/2012	5	809028.001	4TH ST - LINDER TO KAY	ACHD PROJECT	609	\$18,273	KUNA
5/1/2012	5	bloom st\collister road	ACHD UTILITY CREW	ACHD PROJECT	61	\$1,829	BOISE
12/31/2012	10	511030	AMITY-EAGLE ROUNDABOUT	ACHD PROJECT	22	\$666	ADA COUNTY
12/31/2012	10	511030	AMITY-EAGLE ROUNDABOUT	ACHD PROJECT	21	\$632	ADA COUNTY
12/31/2012	10	511030	AMITY-EAGLE ROUNDABOUT	ACHD PROJECT	21	\$632	ADA COUNTY
12/31/2012	10	511030	AMITY-EAGLE ROUNDABOUT	ACHD PROJECT	22	\$666	ADA COUNTY
7/18/2012	5	KINGSTON DRIVE	CAPITAL PROJECT	ACHD PROJECT	773	\$23,200	BOISE
4/14/2012	7	310009	CLOVERDALE & USTICK	ACHD PROJECT	810	\$24,312	BOISE
4/14/2012	7	310009	CLOVERDALE & USTICK	ACHD PROJECT	504	\$15,133	BOISE
4/14/2012	7	310009	CLOVERDALE & USTICK	ACHD PROJECT	22	\$647	BOISE
4/14/2012	5	310009	Cloverdale & Ustick	ACHD PROJECT	645	\$19,339	BOISE
4/14/2012	7	310009	CLOVERDALE & USTICK	ACHD PROJECT	935	\$28,045	BOISE
4/14/2012	5	310009	Cloverdale & Ustick	ACHD PROJECT	290	\$8,700	BOISE
7/5/2012	7	811003.006	CLOVERDALE, LG-AMITY	ACHD PROJECT	14	\$411	ADA COUNTY

7/5/2012	5	811003.006	CLOVERDALE, LG-AMITY	ACHD PROJECT	118	\$3,553	ADA COUNTY
7/5/2012	7	811003.006	CLOVERDALE, LG-AMITY	ACHD PROJECT	21	\$644	ADA COUNTY
7/5/2012	5	811003.006	CLOVERDALE, LG-AMITY	ACHD PROJECT	140	\$4,194	ADA COUNTY
7/5/2012	10	811003.006	CLOVERDALE, LG-AMITY	ACHD PROJECT	31	\$937	ADA COUNTY
7/5/2012	5	811003.006	CLOVERDALE, LG-AMITY	ACHD PROJECT	381	\$11,415	ADA COUNTY
7/5/2012	5	811003.006	CLOVERDALE, LG-AMITY	ACHD PROJECT	638	\$19,146	ADA COUNTY
7/5/2012	5	811003.006	CLOVERDALE, LG-AMITY	ACHD PROJECT	109	\$3,281	ADA COUNTY
4/15/2012	5	810013.011	COFFEY, CHINDEN - PENNY	ACHD PROJECT	60	\$1,794	GARDEN CITY
4/15/2012	5	810013.011	COFFEY, CHINDEN - PENNY	ACHD PROJECT	437	\$13,105	GARDEN CITY
9/1/2012	5	Meridian Rd	DEVELOPMENT SERVICES PROJECT	ACHD PROJECT	73	\$2,187	MERIDIAN
10/2/2012	5	HEWITT PATRICIA	DEVELOPMENT SERVICES PROJECT	ACHD PROJECT	214	\$6,420	BOISE
9/1/2012	5	4TH STREET	DEVELOPMENT SERVICES PROJECT	ACHD PROJECT	126	\$3,777	MERIDIAN
10/2/2012	5	HEWITT PATRICIA	DEVELOPMENT SERVICES PROJECT	ACHD PROJECT	77	\$2,302	BOISE
9/1/2012	5	3rd Street	DEVELOPMENT SERVICES PROJECT	ACHD PROJECT	118	\$3,529	MERIDIAN
9/1/2012	5	5TH STREET	DEVELOPMENT SERVICES PROJECT	ACHD PROJECT	106	\$3,184	MERIDIAN
9/1/2012	5	Meridian Rd	DEVELOPMENT SERVICES PROJECT	ACHD PROJECT	213	\$6,384	MERIDIAN
9/30/2012	7.5	710035	FRANKLIN, TOUCHMARK-FIVE MILE	ACHD PROJECT	2278	\$68,334	ADA COUNTY
9/30/2012	7.5	710035	FRANKLIN, TOUCHMARK-FIVE MILE	ACHD PROJECT	278	\$8,334	BOISE
9/30/2012	7.5	710035	FRANKLIN, TOUCHMARK-FIVE MILE	ACHD PROJECT	465	\$13,951	BOISE
9/30/2012	7.5	710035	FRANKLIN, TOUCHMARK-FIVE MILE	ACHD PROJECT	229	\$6,879	BOISE
9/30/2012	7.5	710035	FRANKLIN, TOUCHMARK-FIVE MILE	ACHD PROJECT	164	\$4,907	BOISE
9/30/2012	7.5	710035	FRANKLIN, TOUCHMARK-FIVE MILE	ACHD PROJECT	135	\$4,049	BOISE
9/30/2012	7.5	710035	FRANKLIN, TOUCHMARK-FIVE MILE	ACHD PROJECT	531	\$15,938	BOISE
9/30/2012	7.5	710035	FRANKLIN, TOUCHMARK-FIVE MILE	ACHD PROJECT	52	\$1,565	BOISE
9/30/2012	7.5	710035	FRANKLIN, TOUCHMARK-FIVE MILE	ACHD PROJECT	549	\$16,458	BOISE
9/30/2012	7.5	710035	FRANKLIN, TOUCHMARK-FIVE MILE	ACHD PROJECT	183	\$5,487	BOISE
9/30/2012	7.5	710035	FRANKLIN, TOUCHMARK-FIVE MILE	ACHD PROJECT	418	\$12,535	BOISE
9/30/2012	7.5	710035	FRANKLIN, TOUCHMARK-FIVE MILE	ACHD PROJECT	772	\$23,148	BOISE
9/30/2012	7.5	710035	FRANKLIN, TOUCHMARK-FIVE MILE	ACHD PROJECT	940	\$28,193	BOISE
9/30/2012	7.5	710035	FRANKLIN, TOUCHMARK-FIVE MILE	ACHD PROJECT	324	\$9,710	BOISE

9/30/2012	7.5	710035	FRANKLIN, TOUCHMARK-FIVE MILE	ACHD PROJECT	2283	\$68,478	MERIDIAN
9/30/2012	7.5	710035	FRANKLIN, TOUCHMARK-FIVE MILE	ACHD PROJECT	2283	\$68,478	BOISE
9/30/2012	7.5	710035	FRANKLIN, TOUCHMARK-FIVE MILE	ACHD PROJECT	364	\$10,932	BOISE
9/30/2012	7.5	710035	FRANKLIN, TOUCHMARK-FIVE MILE	ACHD PROJECT	2278	\$68,334	MERIDIAN
9/30/2012	7.5	710035	FRANKLIN, TOUCHMARK-FIVE MILE	ACHD PROJECT	2278	\$68,334	BOISE
9/30/2012	7.5	710035	FRANKLIN, TOUCHMARK-FIVE MILE	ACHD PROJECT	92	\$2,754	BOISE
9/30/2012	7.5	710035	FRANKLIN, TOUCHMARK-FIVE MILE	ACHD PROJECT	236	\$7,066	BOISE
9/30/2012	7	305031	MAPLE GROVE - FRANKLIN	ACHD PROJECT	115	\$3,462	BOISE
9/30/2012	7	305031	MAPLE GROVE & FRANKLIN	ACHD PROJECT	193	\$5,802	BOISE
9/30/2012	7	305031	MAPLE GROVE & FRANKLIN	ACHD PROJECT	315	\$9,463	BOISE
9/30/2012	9.5	305031	MAPLE GROVE & FRANKLIN	ACHD PROJECT	101	\$3,019	BOISE
9/30/2012	9.5	305031	MAPLE GROVE & FRANKLIN	ACHD PROJECT	325	\$9,742	BOISE
9/30/2012	7	305031	MAPLE GROVE-FRANKLIN	ACHD PROJECT	584	\$17,511	BOISE
5/15/2012	7	811004.012	OLD HORSESHOE BEND RD	ACHD PROJECT	340	\$10,214	ADA COUNTY
5/15/2012	7	811004.012	OLD HORSESHOE BEND RD	ACHD PROJECT	427	\$12,807	ADA COUNTY
5/15/2012	6	811004.012	OLD HORSESHOE BEND RD	ACHD PROJECT	529	\$15,873	ADA COUNTY
11/15/2012	5	810019.005	PARK LN, EHS-FLOATING FEATHER	ACHD PROJECT	762	\$22,871	EAGLE
11/2/2012	12	PINE AVE	SIDEWALK REBUILD-DEV	ACHD PROJECT	150	\$4,508	MERIDIAN
12/18/2012	5	CLEMENT RD	SIDEWALKS/RAMPS	ACHD PROJECT	518	\$15,531	BOISE
12/18/2012	5	CLEMENT RD	SIDEWALKS/RAMPS	ACHD PROJECT	123	\$3,694	BOISE
12/18/2012	5	CLEMENT RD	SIDEWALKS/RAMPS	ACHD PROJECT	18	\$536	BOISE
9/30/2012	7	809024.003	STATE ST. COLLISTER-VMP	ACHD PROJECT	233	\$6,983	BOISE
9/30/2012	7	809024.003	STATE ST. COLLISTER-VMP	ACHD PROJECT	110	\$3,291	BOISE
9/30/2012	5	809024.003	STATE ST. COLLISTER-VMP	ACHD PROJECT	72	\$2,153	BOISE
9/30/2012	7	809024.003	STATE ST. COLLISTER-VMP	ACHD PROJECT	86	\$2,580	BOISE
9/30/2012	7	809024.003	STATE ST. COLLISTER-VMP	ACHD PROJECT	160	\$4,795	BOISE
9/30/2012	7	809024.003	STATE ST. COLLISTER-VMP	ACHD PROJECT	172	\$5,162	BOISE
9/30/2012	7	809024.003	STATE ST. COLLISTER-VMP	ACHD PROJECT	332	\$9,964	BOISE
9/30/2012	5	809024.003	STATE ST. COLLISTER-VMP	ACHD PROJECT	308	\$9,232	BOISE
9/30/2012	7	809024.003	STATE ST. COLLISTER-VMP	ACHD PROJECT	49	\$1,456	BOISE

9/30/2012	5	809024.003	STATE ST. COLLISTER-VMP	ACHD PROJECT	176	\$5,273	BOISE
9/30/2012	7	809024.003	STATE ST. COLLISTER-VMP	ACHD PROJECT	279	\$8,371	BOISE
9/30/2012	7	809024.003	STATE ST. COLLISTER-VMP	ACHD PROJECT	497	\$14,924	BOISE
9/30/2012	5	809024.003	STATE ST. COLLISTER-VMP	ACHD PROJECT	149	\$4,478	BOISE
9/30/2012	7	809024.003	STATE ST. COLLISTER-VMP	ACHD PROJECT	161	\$4,825	BOISE
9/30/2012	7	809024.003	STATE ST. COLLISTER-VMP	ACHD PROJECT	190	\$5,694	BOISE
9/30/2012	4	809024.003	STATE ST. COLLISTER-VMP	ACHD PROJECT	61	\$1,837	BOISE
9/30/2012	7	809024.003	STATE ST. COLLISTER-VMP	ACHD PROJECT	182	\$5,460	BOISE
					TOTAL	\$1,006,676	

Fiscal Year 2012 Subdivision – Sidewalks

GPS DATE	WIDTH	PROJECT DESCRIPTION	PROJECT ORIGIN	LENGTH	ESTIMATED COST	CITY/COUNTY
8/29/2012	5	PEPPERTREE NO 03	SUBDIVISION	978	\$29,336	ADA COUNTY
9/1/2012	5	CENTERCAL	SUBDIVISION	4666	\$139,983	ADA COUNTY
7/27/2012	5	HAZELWOOD VILLAGE NO 04,05	SUBDIVISION	296	\$8,868	ADA COUNTY
7/27/2012	5	HAZELWOOD VILLAGE NO 04,05	SUBDIVISION	95	\$2,850	ADA COUNTY
6/28/2012	5	WASATCH	SUBDIVISION	1765	\$52,951	ADA COUNTY
7/27/2012	5	HAZELWOOD VILLAGE NO 04,05	SUBDIVISION	208	\$6,234	ADA COUNTY
7/27/2012	5	HAZELWOOD VILLAGE NO 04,05	SUBDIVISION	113	\$3,386	ADA COUNTY
7/27/2012	5	HAZELWOOD VILLAGE NO 04,05	SUBDIVISION	199	\$5,957	ADA COUNTY
7/27/2012	5	HAZELWOOD VILLAGE NO 04,05	SUBDIVISION	421	\$12,618	ADA COUNTY
7/27/2012	5	HAZELWOOD VILLAGE NO 04,05	SUBDIVISION	304	\$9,129	ADA COUNTY
9/1/2012	5	CENTERCAL	SUBDIVISION	2019	\$60,573	ADA COUNTY
7/27/2012	5	HAZELWOOD VILLAGE NO 04,05	SUBDIVISION	287	\$8,608	ADA COUNTY
7/27/2012	5	HAZELWOOD VILLAGE NO 04,05	SUBDIVISION	173	\$5,185	ADA COUNTY
8/29/2012	5	PEPPERTREE NO 03	SUBDIVISION	1773	\$53,189	ADA COUNTY
7/27/2012	5	HAZELWOOD VILLAGE NO 04,05	SUBDIVISION	108	\$3,229	ADA COUNTY
7/27/2012	5	HAZELWOOD VILLAGE NO 04,05	SUBDIVISION	250	\$7,490	ADA COUNTY

7/27/2012	5	HAZELWOOD VILLAGE NO 04,05	SUBDIVISION	354	\$10,619	ADA COUNTY
6/28/2012	5	WASATCH	SUBDIVISION	2672	\$80,155	ADA COUNTY
8/29/2012	5	PEPPERTREE NO 03	SUBDIVISION	860	\$25,795	ADA COUNTY
9/1/2012	5	CENTERCAL	SUBDIVISION	4021	\$120,616	ADA COUNTY
1/13/2012	5	DALLAS HARRIS ESTATES NO 06,7,8	SUBDIVISION	138	\$4,131	BOISE
12/11/2012	5	WELCH	SUBDIVISION	432	\$12,953	BOISE
1/13/2012	5	DALLAS HARRIS ESTATES NO 06,7,8	SUBDIVISION	295	\$8,863	BOISE
5/23/2012	5	PINETREE VILLAGE NO 04	SUBDIVISION	505	\$15,163	BOISE
1/13/2012	5	DALLAS HARRIS ESTATES NO 06,7,8	SUBDIVISION	249	\$7,470	BOISE
1/13/2012	5	DALLAS HARRIS ESTATES NO 06,7,8	SUBDIVISION	259	\$7,760	BOISE
11/2/2012	5	TIMBERSIDE NO 01	SUBDIVISION	454	\$13,608	BOISE
1/13/2012	5	DALLAS HARRIS ESTATES NO 06,7,8	SUBDIVISION	296	\$8,866	BOISE
1/13/2012	5	DALLAS HARRIS ESTATES NO 06,7,8	SUBDIVISION	266	\$7,995	BOISE
1/13/2012	5	DALLAS HARRIS ESTATES NO 06,7,8	SUBDIVISION	243	\$7,280	BOISE
11/2/2012	5	TIMBERSIDE NO 01	SUBDIVISION	516	\$15,492	BOISE
1/13/2012	5	DALLAS HARRIS ESTATES NO 06,7,8	SUBDIVISION	971	\$29,126	BOISE
1/13/2012	5	DALLAS HARRIS ESTATES NO 06,7,8	SUBDIVISION	262	\$7,846	BOISE
1/13/2012	5	DALLAS HARRIS ESTATES NO 06,7,8	SUBDIVISION	124	\$3,731	BOISE
1/13/2012	5	DALLAS HARRIS ESTATES NO 06,7,8	SUBDIVISION	514	\$15,422	BOISE
1/13/2012	5	DALLAS HARRIS ESTATES NO 06,7,8	SUBDIVISION	267	\$8,001	BOISE
7/25/2012	5	RIVERHEIGHTS NO 04	SUBDIVISION	801	\$24,025	BOISE
2/10/2012	5	HICKORIES EAST NO 02	SUBDIVISION	1852	\$55,567	BOISE
1/13/2012	5	DALLAS HARRIS ESTATES NO 06,7,8	SUBDIVISION	128	\$3,846	BOISE
1/13/2012	5	DALLAS HARRIS ESTATES NO 06,7,8	SUBDIVISION	124	\$3,707	BOISE
1/13/2012	5	DALLAS HARRIS ESTATES NO 06,7,8	SUBDIVISION	962	\$28,859	BOISE
11/2/2012	5	TIMBERSIDE NO 01	SUBDIVISION	498	\$14,943	BOISE
1/13/2012	5	DALLAS HARRIS ESTATES NO 06,7,8	SUBDIVISION	749	\$22,474	BOISE
1/13/2012	5	DALLAS HARRIS ESTATES NO 06,7,8	SUBDIVISION	210	\$6,311	BOISE
1/13/2012	5	DALLAS HARRIS ESTATES NO 06,7,8	SUBDIVISION	501	\$15,025	BOISE
1/13/2012	5	DALLAS HARRIS ESTATES NO 06,7,8	SUBDIVISION	265	\$7,956	BOISE

12/11/2012	5	WELCH	SUBDIVISION	628	\$18,830	BOISE
1/13/2012	5	DALLAS HARRIS ESTATES NO 06,7,8	SUBDIVISION	127	\$3,812	BOISE
8/24/2012	5	SOMERSET VILLAGE NO 01	SUBDIVISION	389	\$11,660	BOISE
11/2/2012	5	TIMBERSIDE NO 02	SUBDIVISION	621	\$18,626	BOISE
1/13/2012	5	DALLAS HARRIS ESTATES NO 06,7,8	SUBDIVISION	562	\$16,854	BOISE
8/24/2012	5	SOMERSET VILLAGE NO 01	SUBDIVISION	895	\$26,843	BOISE
1/13/2012	5	DALLAS HARRIS ESTATES NO 06,7,8	SUBDIVISION	542	\$16,267	BOISE
7/25/2012	5	RIVERHEIGHTS NO 04	SUBDIVISION	1129	\$33,868	BOISE
9/1/2012	5	BOULDER HEIGHTS ESTATES NO 04	SUBDIVISION	1142	\$34,256	BOISE
11/2/2012	5	TIMBERSIDE NO 02	SUBDIVISION	606	\$18,183	BOISE
1/13/2012	5	DALLAS HARRIS ESTATES NO 06,7,8	SUBDIVISION	267	\$8,005	BOISE
11/28/2012	5	ELEVATION RIDGE	SUBDIVISION	1860	\$55,790	BOISE
1/13/2012	5	DALLAS HARRIS ESTATES NO 06,7,8	SUBDIVISION	261	\$7,834	BOISE
1/13/2012	5	DALLAS HARRIS ESTATES NO 06,7,8	SUBDIVISION	964	\$28,924	BOISE
11/2/2012	5	TIMBERSIDE NO 01	SUBDIVISION	447	\$13,400	BOISE
8/24/2012	5	SOMERSET VILLAGE NO 01	SUBDIVISION	681	\$20,444	BOISE
1/13/2012	5	DALLAS HARRIS ESTATES NO 06,7,8	SUBDIVISION	257	\$7,710	BOISE
1/13/2012	5	DALLAS HARRIS ESTATES NO 06,7,8	SUBDIVISION	272	\$8,147	BOISE
7/25/2012	5	RIVERHEIGHTS NO 04	SUBDIVISION	1300	\$38,998	BOISE
5/23/2012	5	PINETREE VILLAGE NO 04	SUBDIVISION	464	\$13,933	BOISE
1/13/2012	5	DALLAS HARRIS ESTATES NO 06,7,8	SUBDIVISION	261	\$7,838	BOISE
1/13/2012	5	DALLAS HARRIS ESTATES NO 06,7,8	SUBDIVISION	867	\$25,999	BOISE
7/25/2012	5	RIVERHEIGHTS NO 04	SUBDIVISION	893	\$26,798	BOISE
9/30/2012	5	EAGLEFIELD ESTATES NO 02, 03	SUBDIVISION	429	\$12,867	EAGLE
7/13/2012	5	LAKEMOOR NO 03	SUBDIVISION	1939	\$58,177	EAGLE
9/30/2012	5	EAGLEFIELD ESTATES NO 02, 03	SUBDIVISION	340	\$10,192	EAGLE
9/30/2012	5	EAGLEFIELD ESTATES NO 02, 03	SUBDIVISION	1513	\$45,383	EAGLE
10/2/2012	5	WATERS EDGE PHASE 02	SUBDIVISION	1269	\$38,071	EAGLE
9/30/2012	5	EAGLEFIELD ESTATES NO 02, 03	SUBDIVISION	1162	\$34,872	EAGLE
9/25/2012	5	SNOQUALMIE FALLS NO 01	SUBDIVISION	2744	\$82,324	EAGLE

9/30/2012	5	EAGLEFIELD ESTATES NO 02, 03	SUBDIVISION	106	\$3,195	EAGLE
10/2/2012	5	ASHLAND CREEK CONDO NO 01 OA INC	SUBDIVISION	162	\$4,873	GARDEN CITY
4/13/2012	5	CRIMSON POINT NORTH NO 01	SUBDIVISION	542	\$16,256	KUNA
4/13/2012	5	CRIMSON POINT NORTH NO 01	SUBDIVISION	701	\$21,035	KUNA
4/13/2012	5	CRIMSON POINT NORTH NO 01	SUBDIVISION	313	\$9,398	KUNA
4/13/2012	5	CRIMSON POINT NORTH NO 01	SUBDIVISION	495	\$14,851	KUNA
4/13/2012	5	CRIMSON POINT NORTH NO 01	SUBDIVISION	186	\$5,587	KUNA
6/8/2012	5	SPURWING GROVE NO 03,04	SUBDIVISION	777	\$23,312	MERIDIAN
6/8/2012	5	SPURWING GROVE NO 03,04	SUBDIVISION	2725	\$81,745	MERIDIAN
10/29/2012	5	PARAMOUNT NO 18,19,20,21	SUBDIVISION	709	\$21,266	MERIDIAN
9/1/2012	5	CENTERCAL	SUBDIVISION	4666	\$139,983	MERIDIAN
3/12/2012	5	ZEBULON HEIGHTS NO 04	SUBDIVISION	573	\$17,197	MERIDIAN
10/29/2012	5	PARAMOUNT NO 18,19,20,21	SUBDIVISION	1490	\$44,696	MERIDIAN
10/29/2012	5	PARAMOUNT NO 18,19,20,21	SUBDIVISION	307	\$9,201	MERIDIAN
12/13/2012	5	SPURWING GREENS NO 02	SUBDIVISION	1346	\$40,384	MERIDIAN
10/29/2012	5	PARAMOUNT NO 18,19,20,21	SUBDIVISION	219	\$6,585	MERIDIAN
10/29/2012	5	PARAMOUNT NO 18,19,20,21	SUBDIVISION	96	\$2,887	MERIDIAN
6/8/2012	5	SPURWING GROVE NO 03,04	SUBDIVISION	639	\$19,176	MERIDIAN
12/21/2012	5	RESERVE NO 02	SUBDIVISION	726	\$21,768	MERIDIAN
10/29/2012	5	PARAMOUNT NO 18,19,20,21	SUBDIVISION	189	\$5,678	MERIDIAN
12/21/2012	5	RESERVE NO 02	SUBDIVISION	721	\$21,635	MERIDIAN
10/29/2012	5	PARAMOUNT NO 18,19,20,21	SUBDIVISION	195	\$5,850	MERIDIAN
10/29/2012	5	PARAMOUNT NO 18,19,20,21	SUBDIVISION	1889	\$56,668	MERIDIAN
12/13/2012	5	SPURWING GREENS NO 02	SUBDIVISION	2480	\$74,389	MERIDIAN
10/29/2012	5	PARAMOUNT NO 18,19,20,21	SUBDIVISION	711	\$21,328	MERIDIAN
6/8/2012	5	SPURWING GROVE NO 03,04	SUBDIVISION	213	\$6,405	MERIDIAN
10/29/2012	5	PARAMOUNT NO 18,19,20,21	SUBDIVISION	91	\$2,719	MERIDIAN
5/9/2012	5	OAKCREEK NO 02	SUBDIVISION	3466	\$103,965	MERIDIAN
10/29/2012	5	PARAMOUNT NO 20	SUBDIVISION	965	\$28,959	MERIDIAN
10/29/2012	5	PARAMOUNT NO 18,19,20,21	SUBDIVISION	1113	\$33,401	MERIDIAN

4/25/2012	5	WAVERLY PLACE	SUBDIVISION	596	\$17,876	MERIDIAN
4/25/2012	5	WAVERLY PLACE	SUBDIVISION	492	\$14,766	MERIDIAN
4/25/2012	5	WAVERLY PLACE	SUBDIVISION	191	\$5,719	MERIDIAN
9/1/2012	5	CENTERCAL	SUBDIVISION	2019	\$60,573	MERIDIAN
6/8/2012	5	SPURWING GROVE NO 03,04	SUBDIVISION	1621	\$48,641	MERIDIAN
9/13/2012	5	ZEBULON HEIGHTS NO 05	SUBDIVISION	919	\$27,582	MERIDIAN
10/29/2012	5	PARAMOUNT NO 18,19,20,21	SUBDIVISION	2803	\$84,084	MERIDIAN
10/29/2012	5	PARAMOUNT NO 18,19,20,21	SUBDIVISION	702	\$21,074	MERIDIAN
9/13/2012	5	ZEBULON HEIGHTS NO 05	SUBDIVISION	2027	\$60,812	MERIDIAN
10/29/2012	5	PARAMOUNT NO 18,19,20,21	SUBDIVISION	708	\$21,249	MERIDIAN
3/12/2012	5	ZEBULON HEIGHTS NO 04	SUBDIVISION	543	\$16,294	MERIDIAN
10/29/2012	5	PARAMOUNT NO 18,19,20,21	SUBDIVISION	313	\$9,394	MERIDIAN
10/29/2012	5	PARAMOUNT NO 18,19,20,21	SUBDIVISION	717	\$21,516	MERIDIAN
9/13/2012	5	ZEBULON HEIGHTS NO 05	SUBDIVISION	1651	\$49,525	MERIDIAN
10/29/2012	5	PARAMOUNT NO 18,19,20,21	SUBDIVISION	721	\$21,619	MERIDIAN
4/25/2012	5	WAVERLY PLACE	SUBDIVISION	170	\$5,087	MERIDIAN
9/1/2012	5	CENTERCAL	SUBDIVISION	4021	\$120,616	MERIDIAN
12/7/2012	5	PINEWOOD LAKES PHASE 08	SUBDIVISION	491	\$14,719	STAR
12/7/2012	5	PINEWOOD LAKES PHASE 08	SUBDIVISION	1254	\$37,625	STAR
12/7/2012	5	PINEWOOD LAKES PHASE 08	SUBDIVISION	404	\$12,113	STAR
12/7/2012	5	PINEWOOD LAKES PHASE 08	SUBDIVISION	801	\$24,020	STAR
				TOTAL	\$3,307,393	

Appendix B

Fiscal Year 2012 Sidewalk Repair Pedestrian Ramps

GPS DATE	PROJECT NAME	PROJECT ORIGIN	CORNER UPGRADED	ESTIMATED COST ²	CITY/COUNTY
9/1/2012	16th & Grove	2012 Misc. Concrete	2	\$4,024	BOISE
9/1/2012	BRIDGETOWER SUB IMPROVMENTS	2012 Misc. Concrete	1	\$2,012	MERIDIAN
9/1/2012	BRIDGETOWER SUB IMPROVMENTS	2012 Misc. Concrete	1	\$2,012	MERIDIAN
9/1/2012	BRIDGETOWER SUB IMPROVMENTS	2012 Misc. Concrete	1	\$2,012	MERIDIAN
9/1/2012	BRIDGETOWER SUB IMPROVMENTS	2012 Misc. Concrete	1	\$2,012	MERIDIAN
9/1/2012	BRIDGETOWER SUB IMPROVMENTS	2012 Misc. Concrete	1	\$2,012	MERIDIAN
9/1/2012	BRIDGETOWER SUB IMPROVMENTS	2012 Misc. Concrete	1	\$2,012	MERIDIAN
9/1/2012	BRIDGETOWER SUB IMPROVMENTS	2012 Misc. Concrete	1	\$2,012	MERIDIAN
9/1/2012	BRIDGETOWER SUB IMPROVMENTS	2012 Misc. Concrete	1	\$2,012	MERIDIAN
9/1/2012	BRIDGETOWER SUB IMPROVMENTS	2012 Misc. Concrete	1	\$2,012	MERIDIAN
9/1/2012	BRIDGETOWER SUB IMPROVMENTS	2012 Misc. Concrete	1	\$2,012	MERIDIAN
9/1/2012	7611 Maxwell, Boise	2012 Misc. Concrete*	1	\$2,012	BOISE
9/1/2012	7619 Maxwell, Boise	2012 Misc. Concrete*	1	\$2,012	BOISE
9/1/2012	595 S AMERICANA BLVD	2012 Misc. Concrete*	1	\$2,012	BOISE
9/1/2012	115 17th, Boise	2012 Misc. Concrete*	1	\$2,012	BOISE
9/1/2012	108 18th, Boise	2012 Misc. Concrete*	1	\$2,012	BOISE
9/1/2012	1917 Lawndale, Meridian	2012 Misc. Concrete*	1	\$2,012	MERIDIAN
9/1/2012	419 Union, Boise	2012 Misc. Concrete*	1	\$2,012	BOISE
9/1/2012	519 Union, Boise	2012 Misc. Concrete*	1	\$2,012	BOISE
9/1/2012	220 18th, Boise	2012 Misc. Concrete*	1	\$2,012	BOISE
9/1/2012	2401 Bannock, Boise	2012 Misc. Concrete*	1	\$2,012	BOISE
9/1/2012	2324 Bannock, Boise	2012 Misc. Concrete*	1	\$2,012	BOISE

² All cost estimates for pedestrian ramps based on ACHD's average cost of \$2012 per corner upgraded.

9/1/2012	2400 Bannock, Boise	2012 Misc. Concrete*	1	\$2,012	BOISE
9/1/2012	1217 20th, Boise	2012 Misc. Concrete*	1	\$2,012	BOISE
9/1/2012	2514 Hazel, Boise	2012 Misc. Concrete*	1	\$2,012	BOISE
9/1/2012	644 Spyglass, Eagle	2012 Misc. Concrete*	1	\$2,012	EAGLE
9/1/2012	1460 Medinah, Eagle	2012 Misc. Concrete*	1	\$2,012	EAGLE
9/1/2012	1444 Medinah, Eagle	2012 Misc. Concrete*	1	\$2,012	EAGLE
9/1/2012	1010 Eagle Hills, Eagle	2012 Misc. Concrete*	1	\$2,012	EAGLE
9/1/2012	1223 State, Boise	2012 Misc. Concrete*	2	\$4,024	BOISE
9/1/2012	1301 State, Boise	2012 Misc. Concrete*	2	\$4,024	BOISE
9/1/2012	1302 State, Boise	2012 Misc. Concrete*	2	\$4,024	BOISE
9/1/2012	1222 State, Boise	2012 Misc. Concrete*	2	\$4,024	BOISE
9/1/2012	1122 Jefferson, Boise	2012 Misc. Concrete*	2	\$4,024	BOISE
9/1/2012	2323 Idaho, Boise	2012 Misc. Concrete*	2	\$4,024	BOISE
9/1/2012	120 23rd, Boise	2012 Misc. Concrete*	2	\$4,024	BOISE
9/1/2012	111 23rd, Boise	2012 Misc. Concrete*	2	\$4,024	BOISE
9/1/2012	2401 Idaho, Boise	2012 Misc. Concrete*	2	\$4,024	BOISE
9/1/2012	2400 Idaho, Boise	2012 Misc. Concrete*	2	\$4,024	BOISE
9/1/2012	216 23rd, Boise	2012 Misc. Concrete*	2	\$4,024	BOISE
9/1/2012	1901 Jefferson, Boise	2012 Misc. Concrete*	2	\$4,024	BOISE
9/1/2012	1901 Jefferson, Boise	2012 Misc. Concrete*	2	\$4,024	BOISE
9/1/2012	447 Thatcher, Boise	2012 Misc. Concrete*	2	\$4,024	BOISE
9/1/2012	2302 Bannock, Boise	2012 Misc. Concrete*	2	\$4,024	BOISE
9/1/2012	1901 Jefferson, Boise	2012 Misc. Concrete*	2	\$4,024	BOISE
9/1/2012	1102 7th, Boise	2012 Misc. Concrete*	2	\$4,024	BOISE
9/1/2012	1102 5th, Boise	2012 Misc. Concrete*	2	\$4,024	BOISE
9/1/2012	2102 Jefferson, Boise	2012 Misc. Concrete*	2	\$4,024	BOISE
9/1/2012	1920 Jefferson, Boise	2012 Misc. Concrete*	2	\$4,024	BOISE
9/1/2012	1120 6th, Boise	2012 Misc. Concrete*	2	\$4,024	BOISE
9/1/2012	1117 6th, Boise	2012 Misc. Concrete*	2	\$4,024	BOISE
9/1/2012	1202 5th, Boise	2012 Misc. Concrete*	2	\$4,024	BOISE

9/1/2012	1219 6th, Boise	2012 Misc. Concrete*	2	\$4,024	BOISE
9/1/2012	1220 7th, Boise	2012 Misc. Concrete*	2	\$4,024	BOISE
9/1/2012	1302 7th, Boise	2012 Misc. Concrete*	2	\$4,024	BOISE
9/1/2012	1418 6th, Boise	2012 Misc. Concrete*	2	\$4,024	BOISE
9/1/2012	1420 7th, Boise	2012 Misc. Concrete*	2	\$4,024	BOISE
9/1/2012	504 Ada, Boise	2012 Misc. Concrete*	2	\$4,024	BOISE
9/1/2012	1502 7th, Boise	2012 Misc. Concrete*	2	\$4,024	BOISE
9/1/2012	601 Sherman, Boise	2012 Misc. Concrete*	2	\$4,024	BOISE
9/1/2012	1521 5th, Boise	2012 Misc. Concrete*	2	\$4,024	BOISE
9/1/2012	1520 6th, Boise	2012 Misc. Concrete*	2	\$4,024	BOISE
9/1/2012	1602 6th, Boise	2012 Misc. Concrete*	2	\$4,024	BOISE
9/1/2012	1601 6th, Boise	2012 Misc. Concrete*	2	\$4,024	BOISE
9/1/2012	1620 7th, Boise	2012 Misc. Concrete*	2	\$4,024	BOISE
9/1/2012	920 N. 20th, Boise	2012 Misc. Concrete*	2	\$4,024	BOISE
9/1/2012	1001 21st, Boise	2012 Misc. Concrete*	2	\$4,024	BOISE
9/1/2012	1020 21st, Boise	2012 Misc. Concrete*	2	\$4,024	BOISE
9/1/2012	1020 22nd, Boise	2012 Misc. Concrete*	2	\$4,024	BOISE
9/1/2012	1101 20th, Boise	2012 Misc. Concrete*	2	\$4,024	BOISE
9/1/2012	1101 22nd, Boise	2012 Misc. Concrete*	2	\$4,024	BOISE
9/1/2012	1119 21st, Boise	2012 Misc. Concrete*	2	\$4,024	BOISE
9/1/2012	2522 State, Boise	2012 Misc. Concrete*	2	\$4,024	BOISE
9/1/2012	2301 Ridenbaugh, Boise	2012 Misc. Concrete*	2	\$4,024	BOISE
9/1/2012	1219 21st, Boise	2012 Misc. Concrete*	2	\$4,024	BOISE
9/1/2012	1301 20th, Boise	2012 Misc. Concrete*	2	\$4,024	BOISE
9/1/2012	1303 21st, Boise	2012 Misc. Concrete*	2	\$4,024	BOISE
9/1/2012	2611 Ellis, Boise	2012 Misc. Concrete*	2	\$4,024	BOISE
9/1/2012	2627 Ellis, Boise	2012 Misc. Concrete*	2	\$4,024	BOISE
9/1/2012	2103 Lemp, Boise	2012 Misc. Concrete*	2	\$4,024	BOISE
9/1/2012	1421 N. 21st, Boise	2012 Misc. Concrete*	2	\$4,024	BOISE
9/1/2012	1420 N. 21st, Boise	2012 Misc. Concrete*	2	\$4,024	BOISE

9/1/2012	1502 N. 21st, Boise	2012 Misc. Concrete*	2	\$4,024	BOISE
9/1/2012	2015 Hazel, Boise	2012 Misc. Concrete*	2	\$4,024	BOISE
9/1/2012	1519 21st, Boise	2012 Misc. Concrete*	2	\$4,024	BOISE
9/1/2012	2319 Hazel, Boise	2012 Misc. Concrete*	2	\$4,024	BOISE
9/1/2012	2625 Hazel, Boise	2012 Misc. Concrete*	2	\$4,024	BOISE
9/1/2012	1618 21st, Boise	2012 Misc. Concrete*	2	\$4,024	BOISE
9/1/2012	1619 20th, Boise	2012 Misc. Concrete*	2	\$4,024	BOISE
9/1/2012	1619 21st, Boise	2012 Misc. Concrete*	2	\$4,024	BOISE
9/1/2012	1702 21st, Boise	2012 Misc. Concrete*	2	\$4,024	BOISE
9/1/2012	1701 20th, Boise	2012 Misc. Concrete*	2	\$4,024	BOISE
9/1/2012	1701 21st, Boise	2012 Misc. Concrete*	2	\$4,024	BOISE
9/1/2012	1711 21st, Boise	2012 Misc. Concrete*	2	\$4,024	BOISE
9/1/2012	2301 Jefferson, Boise	2012 Misc. Concrete*	2	\$4,024	BOISE
9/1/2012	1114 7th, Boise	2012 Misc. Concrete*	2	\$4,024	BOISE
9/1/2012	1119 20th, Boise	2012 Misc. Concrete*	2	\$4,024	BOISE
9/1/2012	2629 Ellis, Boise	2012 Misc. Concrete*	2	\$4,024	BOISE
			TOTAL	\$338,016	

Fiscal Year 2012 ACHD Capital Project Pedestrian Ramps

GPS DATE	PROJECT NUMBER	PROJECT DESCRIPTION	CORNERS UPGRADED	ESTIMATED COST	CITY
5/2/2012	710016	2011 FEDERAL OVERLAY	60	\$120,720	BOISE
6/27/2012	511012 - OV212	2012 LOCAL OV-PH1	69	\$138,828	BOISE
9/21/2012	512024 - OV213	2012 LOCAL OV-PH2	111	\$223,332	BOISE
9/21/2012	512025	2012 LOCAL OV-PH3	48	\$96,576	BOISE
10/16/2012	512035	2012 LOCAL OV-PH4	68	\$136,816	BOISE
2/24/2012	612010	2ND & FRONT	5	\$10,060	BOISE
9/12/2012	Work Order	ACHD UTILITY CREW	1	\$2,012	BOISE
9/12/2012	Work Order	ACHD UTILITY CREW	1	\$2,012	BOISE

9/12/2012	Work Order	ACHD UTILITY CREW	1	\$2,012	BOISE
9/12/2012	Work Order	ACHED UTILITY CREW	1	\$2,012	BOISE
4/14/2012	310009	CLOVERDALE - USTICK	38	\$76,456	BOISE
9/30/2012	710035	FRANKLINE - TM TO FM	32	\$64,384	BOISE
9/30/2012	305301	MAPLE GROVE & FRANKL	2	\$4,024	BOISE
9/30/2012	305301	MAPLE GROVE & FRANKL	2	\$4,024	BOISE
9/30/2012	305301	MAPLE GROVE & FRANKL	2	\$4,024	BOISE
9/30/2012	305301	MAPLE GROVE & FRANKL	2	\$4,024	BOISE
9/30/2012	305301	MAPLE GROVE & FRANKL	1	\$2,012	BOISE
9/30/2012	305301	MAPLE GROVE & FRANKL	1	\$2,012	BOISE
12/18/2012	CLEMENT RD	NEW SIDEWALK/RAMPS	1	\$2,012	BOISE
12/18/2012	CLEMENT RD	NEW SIDEWALK/RAMPS	1	\$2,012	BOISE
12/18/2012	CLEMENT RD	NEW SIDEWALK/RAMPS	1	\$2,012	BOISE
12/18/2012	CLEMENT RD	NEW SIDEWALK/RAMPS	1	\$2,012	BOISE
9/30/2012	809024.003	STATE, COLLISTER-VMP	39	\$78,468	BOISE
3/30/2012	LEGENDS & MCMILLAN	TRAFFIC DEPT	1	\$2,012	BOISE
3/30/2012	LEGENDS & MCMILLAN	TRAFFIC DEPT	1	\$2,012	BOISE
3/30/2012	LEGENDS & MCMILLAN	TRAFFIC DEPT	1	\$2,012	BOISE
9/14/2012	507004	USTICK, DUANE-CAMPTO	1	\$2,012	BOISE
9/14/2012	507004	USTICK, DUANE-CAMPTO	1	\$2,012	BOISE
9/14/2012	507004	USTICK, DUANE-CAMPTO	1	\$2,012	BOISE
9/14/2012	507004	USTICK, DUANE-CAMPTO	1	\$2,012	BOISE
9/14/2012	507004	USTICK, DUANE-CAMPTO	1	\$2,012	BOISE
9/14/2012	507004	USTICK, DUANE-CAMPTO	1	\$2,012	BOISE
9/14/2012	507004	USTICK, DUANE-CAMPTO	1	\$2,012	BOISE
9/14/2012	507004	USTICK, DUANE-CAMPTO	1	\$2,012	BOISE
2/24/2012	612010	2ND & FRONT	2	\$4,024	BOISE
9/12/2012	Work Order	ACHD UTILITY CREW	1	\$2,012	BOISE
9/12/2012	Work Order	ACHD UTILITY CREW	1	\$2,012	BOISE
9/12/2012	Work Order	ACHD UTILITY CREW	1	\$2,012	BOISE

9/12/2012	Work Order	ACHED UTILITY CREW	1	\$2,012	BOISE
4/14/2012	310009	CLOVERDALE - USTICK	38	\$76,456	BOISE
9/30/2012	710035	FRANKLINE - TM TO FM	32	\$64,384	BOISE
9/30/2012	305301	MAPLE GROVE & FRANKL	2	\$4,024	BOISE
9/30/2012	305301	MAPLE GROVE & FRANKL	2	\$4,024	BOISE
9/30/2012	305301	MAPLE GROVE & FRANKL	2	\$4,024	BOISE
9/30/2012	305301	MAPLE GROVE & FRANKL	2	\$4,024	BOISE
9/30/2012	305301	MAPLE GROVE & FRANKL	1	\$2,012	BOISE
9/30/2012	305301	MAPLE GROVE & FRANKL	1	\$2,012	BOISE
12/18/2012	CLEMENT RD	NEW SIDEWALK/RAMPS	1	\$2,012	BOISE
12/18/2012	CLEMENT RD	NEW SIDEWALK/RAMPS	1	\$2,012	BOISE
12/18/2012	CLEMENT RD	NEW SIDEWALK/RAMPS	1	\$2,012	BOISE
12/18/2012	CLEMENT RD	NEW SIDEWALK/RAMPS	1	\$2,012	BOISE
9/30/2012	809024.003	STATE, COLLISTER-VMP	39	\$78,468	BOISE
3/30/2012	LEGENDS & MCMILLAN	TRAFFIC DEPT	1	\$2,012	BOISE
3/30/2012	LEGENDS & MCMILLAN	TRAFFIC DEPT	1	\$2,012	BOISE
3/30/2012	LEGENDS & MCMILLAN	TRAFFIC DEPT	1	\$2,012	BOISE
9/14/2012	507004	USTICK, DUANE-CAMPTO	1	\$2,012	BOISE
9/14/2012	507004	USTICK, DUANE-CAMPTO	1	\$2,012	BOISE
9/14/2012	507004	USTICK, DUANE-CAMPTO	1	\$2,012	BOISE
9/14/2012	507004	USTICK, DUANE-CAMPTO	1	\$2,012	BOISE
9/14/2012	507004	USTICK, DUANE-CAMPTO	1	\$2,012	BOISE
9/14/2012	507004	USTICK, DUANE-CAMPTO	1	\$2,012	BOISE
9/14/2012	507004	USTICK, DUANE-CAMPTO	1	\$2,012	BOISE
9/14/2012	507004	USTICK, DUANE-CAMPTO	1	\$2,012	BOISE
11/15/2012	810019.005	PARK LN, SH44-FF	2	\$4,024	EAGLE
1/3/2012	510036	SH55 & HILL RD	2	\$4,024	EAGLE
1/3/2012	510036	SH55 & HILL RD	2	\$4,024	EAGLE
1/3/2012	510036	SH55 & HILL RD	2	\$4,024	EAGLE
1/3/2012	510036	SH55 & HILL RD	2	\$4,024	EAGLE

11/15/2012	810019.005	PARK LN, SH44-FF	2	\$4,024	EAGLE
1/3/2012	510036	SH55 & HILL RD	2	\$4,024	EAGLE
1/3/2012	510036	SH55 & HILL RD	2	\$4,024	EAGLE
1/3/2012	510036	SH55 & HILL RD	2	\$4,024	EAGLE
1/3/2012	510036	SH55 & HILL RD	2	\$4,024	EAGLE
12/15/2012	809028.001	4TH ST - LINDER TO K	1	\$2,012	KUNA
12/19/2012	809028.001	DWD ONLY	2	\$4,024	KUNA
12/15/2012	809028.001	4TH ST - LINDER TO K	1	\$2,012	KUNA
12/19/2012	809028.001	DWD ONLY	2	\$4,024	KUNA
4/16/2012	312003	BLACK CAT & CHERRY	8	\$16,096	MERIDIAN
9/1/2012	CITY OF MERIDIAN	PARK	2	\$4,024	MERIDIAN
9/1/2012	CITY OF MERIDIAN	PARK	2	\$4,024	MERIDIAN
12/19/2012	310023	TEN MILE & USTICK	2	\$4,024	MERIDIAN
12/19/2012	310023	TEN MILE & USTICK	2	\$4,024	MERIDIAN
12/19/2012	310023	TEN MILE & USTICK	2	\$4,024	MERIDIAN
12/19/2012	310023	TEN MILE & USTICK	2	\$4,024	MERIDIAN
12/19/2012	310023	TEN MILE & USTICK	2	\$4,024	MERIDIAN
12/19/2012	310023	TEN MILE & USTICK	2	\$4,024	MERIDIAN
12/19/2012	310023	TEN MILE & USTICK	2	\$4,024	MERIDIAN
12/19/2012	310023	TEN MILE & USTICK	2	\$4,024	MERIDIAN
12/19/2012	310023	USTICK & TEN MILE	1	\$2,012	MERIDIAN
12/19/2012	310023	USTICK & TEN MILE	1	\$2,012	MERIDIAN
9/14/2012	507004	USTICK, DUANE-CAMPTO	1	\$2,012	MERIDIAN
9/14/2012	507004	USTICK, DUANE-CAMPTO	1	\$2,012	MERIDIAN
9/14/2012	507004	USTICK, DUANE-CAMPTO	1	\$2,012	MERIDIAN
4/16/2012	312003	BLACK CAT & CHERRY	2	\$4,024	MERIDIAN
4/16/2012	312003	BLACK CAT & CHERRY	2	\$4,024	MERIDIAN
9/1/2012	CITY OF MERIDIAN	PARK	2	\$4,024	MERIDIAN
9/1/2012	CITY OF MERIDIAN	PARK	2	\$4,024	MERIDIAN
12/19/2012	310023	TEN MILE & USTICK	2	\$4,024	MERIDIAN
12/19/2012	310023	TEN MILE & USTICK	2	\$4,024	MERIDIAN

12/19/2012	310023	TEN MILE & USTICK	2	\$4,024	MERIDIAN
12/19/2012	310023	TEN MILE & USTICK	2	\$4,024	MERIDIAN
12/19/2012	310023	TEN MILE & USTICK	2	\$4,024	MERIDIAN
12/19/2012	310023	TEN MILE & USTICK	2	\$4,024	MERIDIAN
12/19/2012	310023	TEN MILE & USTICK	2	\$4,024	MERIDIAN
12/19/2012	310023	USTICK & TEN MILE	1	\$2,012	MERIDIAN
12/19/2012	310023	USTICK & TEN MILE	1	\$2,012	MERIDIAN
9/14/2012	507004	USTICK, DUANE-CAMPTO	1	\$2,012	MERIDIAN
9/14/2012	507004	USTICK, DUANE-CAMPTO	1	\$2,012	MERIDIAN
9/14/2012	507004	USTICK, DUANE-CAMPTO	1	\$2,012	MERIDIAN
5/15/2012	205036	205036	2	\$4,024	ADA COUNTY
7/5/2012	811003.017	CLOVERDALE, LG-AMITY	5	\$10,060	ADA COUNTY
12/31/2012	511030	EAGLE/AMITY ROUNDAB*	1	\$2,012	ADA COUNTY
12/31/2012	511030	EAGLE/AMITY ROUNDAB*	1	\$2,012	ADA COUNTY
12/31/2012	511030	EAGLE/AMITY ROUNDAB*	1	\$2,012	ADA COUNTY
12/31/2012	511030	EAGLE/AMITY ROUNDAB*	1	\$2,012	ADA COUNTY
12/31/2012	511030	EAGLE/AMITY ROUNDAB*	1	\$2,012	ADA COUNTY
12/31/2012	511030	EAGLE/AMITY ROUNDAB*	1	\$2,012	ADA COUNTY
12/31/2012	511030	EAGLE/AMITY ROUNDAB*	1	\$2,012	ADA COUNTY
12/31/2012	511030	EAGLE/AMITY ROUNDAB*	1	\$2,012	ADA COUNTY
9/1/2012	CITY OF MERIDIAN	PARK	1	\$2,012	ADA COUNTY
9/1/2012	CITY OF MERIDIAN	PARK	1	\$2,012	ADA COUNTY
9/14/2012	507004	USTICK, DUANE-CAMPTO	1	\$2,012	ADA COUNTY
4/16/2012	312003	BLACK CAT & CHERRY	2	\$4,024	ADA COUNTY
4/16/2012	312003	BLACK CAT & CHERRY	2	\$4,024	ADA COUNTY
7/5/2012	811003.017	CLOVERDALE, LG-AMITY	1	\$2,012	ADA COUNTY
7/5/2012	811003.006	CLOVERDALE, LG-AMITY	1	\$2,012	ADA COUNTY
7/5/2012	811003.006	CLOVERDALE, LG-AMITY	1	\$2,012	ADA COUNTY
7/5/2012	811003.006	CLOVERDALE, LG-AMITY	1	\$2,012	ADA COUNTY
7/5/2012	811003.006	CLOVERDALE, LG-AMITY	1	\$2,012	ADA COUNTY

12/31/2012	511030	EAGLE/AMITY ROUNDAB*	1	\$2,012	ADA COUNTY
12/31/2012	511030	EAGLE/AMITY ROUNDAB*	1	\$2,012	ADA COUNTY
12/31/2012	511030	EAGLE/AMITY ROUNDAB*	1	\$2,012	ADA COUNTY
12/31/2012	511030	EAGLE/AMITY ROUNDAB*	1	\$2,012	ADA COUNTY
12/31/2012	511030	EAGLE/AMITY ROUNDAB*	1	\$2,012	ADA COUNTY
12/31/2012	511030	EAGLE/AMITY ROUNDAB*	1	\$2,012	ADA COUNTY
12/31/2012	511030	EAGLE/AMITY ROUNDAB*	1	\$2,012	ADA COUNTY
12/31/2012	511030	EAGLE/AMITY ROUNDAB*	1	\$2,012	ADA COUNTY
9/1/2012	CITY OF MERIDIAN	PARK	1	\$2,012	ADA COUNTY
9/1/2012	CITY OF MERIDIAN	PARK	1	\$2,012	ADA COUNTY
			TOTAL	\$1,470,772	

Fiscal Year 2012 Subdivision Pedestrian Ramps

GPS DATE	PROJECT NAME	PROJECT ORIGIN	RAMPS INSTALLED	ESTIMATED COST	CITY/COUNTY
6/18/2012	SPURWING GROVE NO 03	SUBDIVISION	1	\$2,012	BOISE
11/28/2012	ELEVATION RIDGE	SUBDIVISION	2	\$4,024	BOISE
11/28/2012	ELEVATION RIDGE	SUBDIVISION	2	\$4,024	BOISE
7/25/2012	RIVERHEIGHTS NO 04	SUBDIVISION	2	\$4,024	BOISE
7/25/2012	RIVERHEIGHTS NO 04	SUBDIVISION	2	\$4,024	BOISE
1/13/2012	DALLAS HARRIS ESTATES NO 06,7,8	SUBDIVISION	2	\$4,024	BOISE
1/13/2012	DALLAS HARRIS ESTATES NO 06,7,8	SUBDIVISION	2	\$4,024	BOISE
1/13/2012	DALLAS HARRIS ESTATES NO 06,7,8	SUBDIVISION	2	\$4,024	BOISE
1/13/2012	DALLAS HARRIS ESTATES NO 06,7,8	SUBDIVISION	2	\$4,024	BOISE
1/13/2012	DALLAS HARRIS ESTATES NO 06,7,8	SUBDIVISION	2	\$4,024	BOISE
1/13/2012	DALLAS HARRIS ESTATES NO 06,7,8	SUBDIVISION	2	\$4,024	BOISE
1/13/2012	DALLAS HARRIS ESTATES NO 06,7,8	SUBDIVISION	2	\$4,024	BOISE
1/13/2012	DALLAS HARRIS ESTATES NO 06,7,8	SUBDIVISION	2	\$4,024	BOISE
1/13/2012	DALLAS HARRIS ESTATES NO 06,7,8	SUBDIVISION	2	\$4,024	BOISE
1/13/2012	DALLAS HARRIS ESTATES NO 06,7,8	SUBDIVISION	2	\$4,024	BOISE

1/13/2012	DALLAS HARRIS ESTATES NO 06,7,8	SUBDIVISION	2	\$4,024	BOISE
1/13/2012	DALLAS HARRIS ESTATES NO 06,7,8	SUBDIVISION	2	\$4,024	BOISE
1/13/2012	DALLAS HARRIS ESTATES NO 06,7,8	SUBDIVISION	2	\$4,024	BOISE
1/13/2012	DALLAS HARRIS ESTATES NO 06,7,8	SUBDIVISION	2	\$4,024	BOISE
1/13/2012	DALLAS HARRIS ESTATES NO 06,7,8	SUBDIVISION	2	\$4,024	BOISE
1/13/2012	DALLAS HARRIS ESTATES NO 06,7,8	SUBDIVISION	2	\$4,024	BOISE
1/13/2012	DALLAS HARRIS ESTATES NO 06,7,8	SUBDIVISION	2	\$4,024	BOISE
1/13/2012	DALLAS HARRIS ESTATES NO 06,7,8	SUBDIVISION	2	\$4,024	BOISE
1/13/2012	DALLAS HARRIS ESTATES NO 06,7,8	SUBDIVISION	2	\$4,024	BOISE
1/13/2012	DALLAS HARRIS ESTATES NO 06,7,8	SUBDIVISION	2	\$4,024	BOISE
1/13/2012	DALLAS HARRIS ESTATES NO 06,7,8	SUBDIVISION	2	\$4,024	BOISE
1/13/2012	DALLAS HARRIS ESTATES NO 06,7,8	SUBDIVISION	2	\$4,024	BOISE
1/13/2012	DALLAS HARRIS ESTATES NO 06,7,8	SUBDIVISION	2	\$4,024	BOISE
1/13/2012	DALLAS HARRIS ESTATES NO 06,7,8	SUBDIVISION	2	\$4,024	BOISE
1/13/2012	DALLAS HARRIS ESTATES NO 06,7,8	SUBDIVISION	2	\$4,024	BOISE
1/13/2012	DALLAS HARRIS ESTATES NO 06,7,8	SUBDIVISION	2	\$4,024	BOISE
1/13/2012	DALLAS HARRIS ESTATES NO 06,7,8	SUBDIVISION	2	\$4,024	BOISE
1/13/2012	DALLAS HARRIS ESTATES NO 06,7,8	SUBDIVISION	2	\$4,024	BOISE
1/13/2012	DALLAS HARRIS ESTATES NO 06,7,8	SUBDIVISION	2	\$4,024	BOISE
1/13/2012	DALLAS HARRIS ESTATES NO 06,7,8	SUBDIVISION	2	\$4,024	BOISE
1/13/2012	DALLAS HARRIS ESTATES NO 06,7,8	SUBDIVISION	2	\$4,024	BOISE
1/13/2012	DALLAS HARRIS ESTATES NO 06,7,8	SUBDIVISION	2	\$4,024	BOISE
1/13/2012	DALLAS HARRIS ESTATES NO 06,7,8	SUBDIVISION	2	\$4,024	BOISE
1/13/2012	DALLAS HARRIS ESTATES NO 06,7,8	SUBDIVISION	2	\$4,024	BOISE
5/23/2012	PINETREE VILLAGE NO 04	SUBDIVISION	2	\$4,024	BOISE
5/23/2012	PINETREE VILLAGE NO 04	SUBDIVISION	2	\$4,024	BOISE
12/11/2012	WELCH	SUBDIVISION	2	\$4,024	BOISE
12/11/2012	WELCH	SUBDIVISION	2	\$4,024	BOISE
8/24/2012	SOMERSET VILLAGE NO 01	SUBDIVISION	2	\$4,024	BOISE
8/24/2012	SOMERSET VILLAGE NO 01	SUBDIVISION	2	\$4,024	BOISE
8/24/2012	SOMERSET VILLAGE NO 01	SUBDIVISION	2	\$4,024	BOISE
8/24/2012	SOMERSET VILLAGE NO 01	SUBDIVISION	2	\$4,024	BOISE

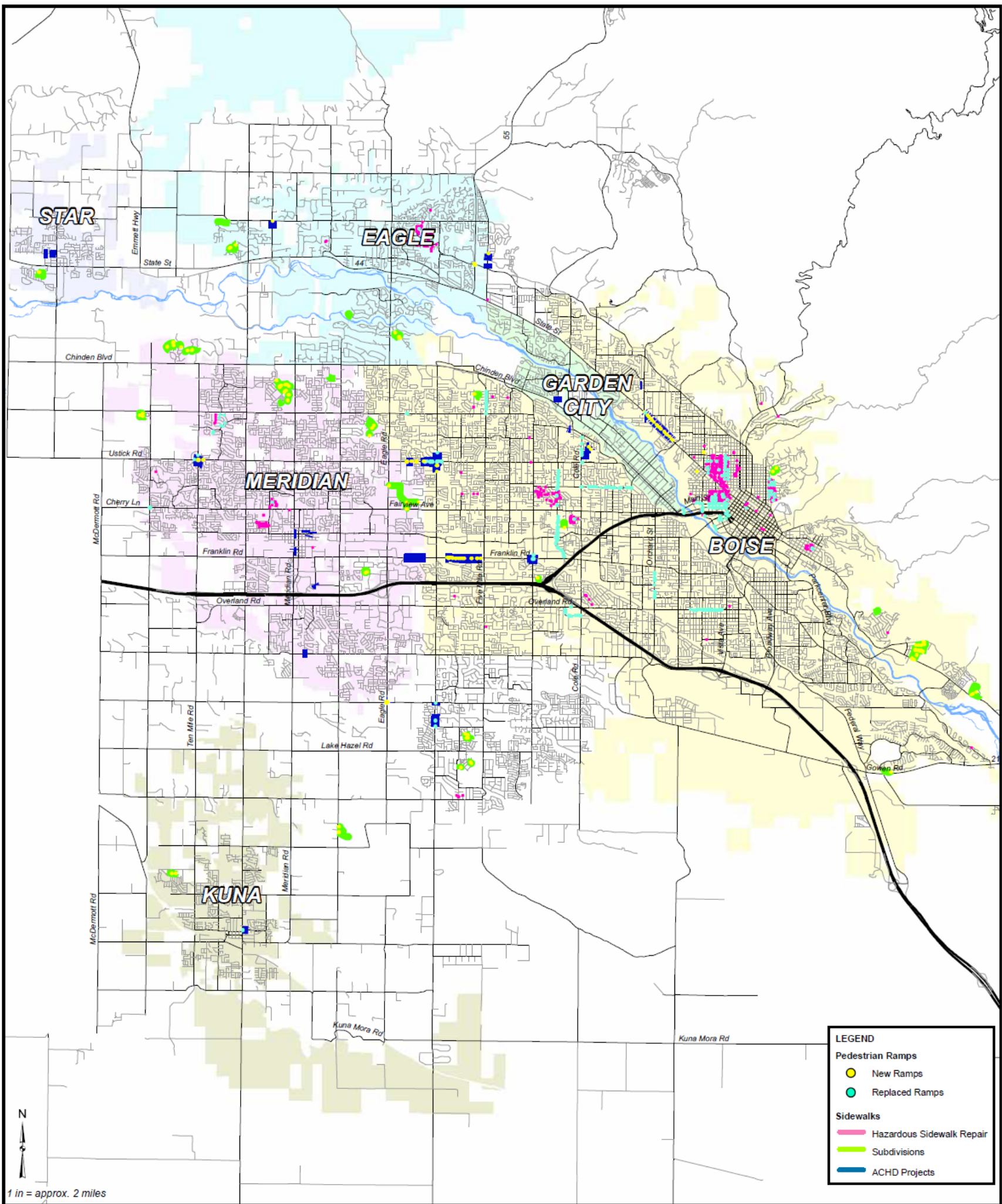
2/10/2012	HICKORIES EAST NO 02	SUBDIVISION	2	\$4,024	BOISE
2/10/2012	HICKORIES EAST NO 02	SUBDIVISION	2	\$4,024	BOISE
7/13/2012	LAKEMOOR NO 03	SUBDIVISION	2	\$4,024	EAGLE
7/13/2012	LAKEMOOR NO 03	SUBDIVISION	2	\$4,024	EAGLE
7/13/2012	LAKEMOOR NO 03	SUBDIVISION	2	\$4,024	EAGLE
7/13/2012	LAKEMOOR NO 03	SUBDIVISION	2	\$4,024	EAGLE
7/13/2012	LAKEMOOR NO 03	SUBDIVISION	2	\$4,024	EAGLE
7/13/2012	LAKEMOOR NO 03	SUBDIVISION	2	\$4,024	EAGLE
7/13/2012	LAKEMOOR NO 03	SUBDIVISION	2	\$4,024	EAGLE
9/30/2012	EAGLEFIELD ESTATES NO 02, 03	SUBDIVISION	2	\$4,024	EAGLE
9/30/2012	EAGLEFIELD ESTATES NO 02, 03	SUBDIVISION	2	\$4,024	EAGLE
9/30/2012	EAGLEFIELD ESTATES NO 02, 03	SUBDIVISION	2	\$4,024	EAGLE
9/30/2012	EAGLEFIELD ESTATES NO 02, 03	SUBDIVISION	2	\$4,024	EAGLE
9/30/2012	EAGLEFIELD ESTATES NO 02, 03	SUBDIVISION	2	\$4,024	EAGLE
9/30/2012	EAGLEFIELD ESTATES NO 02, 03	SUBDIVISION	2	\$4,024	EAGLE
9/30/2012	EAGLEFIELD ESTATES NO 02, 03	SUBDIVISION	2	\$4,024	EAGLE
10/2/2012	ASHLAND CREEK CONDO NO 01 OA INC	SUBDIVISION	2	\$4,024	GARDEN CITY
10/2/2012	ASHLAND CREEK CONDO NO 01 OA INC	SUBDIVISION	2	\$4,024	GARDEN CITY
4/13/2012	CRIMSON POINT NORTH NO 01	SUBDIVISION	2	\$4,024	KUNA
4/13/2012	CRIMSON POINT NORTH NO 01	SUBDIVISION	2	\$4,024	KUNA
4/13/2012	CRIMSON POINT NORTH NO 01	SUBDIVISION	2	\$4,024	KUNA
4/13/2012	CRIMSON POINT NORTH NO 01	SUBDIVISION	2	\$4,024	KUNA
6/18/2012	SPURWING GROVE NO 03	SUBDIVISION	1	\$2,012	MERIDIAN
6/18/2012	SPURWING GROVE NO 03	SUBDIVISION	1	\$2,012	MERIDIAN
6/18/2012	SPURWING GROVE NO 03	SUBDIVISION	1	\$2,012	MERIDIAN
6/18/2012	SPURWING GROVE NO 03	SUBDIVISION	1	\$2,012	MERIDIAN
6/18/2012	SPURWING GROVE NO 03	SUBDIVISION	1	\$2,012	MERIDIAN
6/18/2012	SPURWING GROVE NO 03	SUBDIVISION	1	\$2,012	MERIDIAN
6/18/2012	SPURWING GROVE NO 03	SUBDIVISION	1	\$2,012	MERIDIAN
6/18/2012	SPURWING GROVE NO 03	SUBDIVISION	1	\$2,012	MERIDIAN
6/18/2012	SPURWING GROVE NO 03	SUBDIVISION	1	\$2,012	MERIDIAN
6/18/2012	SPURWING GROVE NO 03	SUBDIVISION	1	\$2,012	MERIDIAN

6/18/2012	SPURWING GROVE NO 03	SUBDIVISION	1	\$2,012	MERIDIAN
6/18/2012	SPURWING GROVE NO 03	SUBDIVISION	1	\$2,012	MERIDIAN
4/25/2012	WAVERLY PLACE	SUBDIVISION	2	\$4,024	MERIDIAN
4/25/2012	WAVERLY PLACE	SUBDIVISION	2	\$4,024	MERIDIAN
4/25/2012	WAVERLY PLACE	SUBDIVISION	2	\$4,024	MERIDIAN
4/25/2012	WAVERLY PLACE	SUBDIVISION	2	\$4,024	MERIDIAN
9/1/2012	CENTERCAL	SUBDIVISION	2	\$4,024	MERIDIAN
9/1/2012	CENTERCAL	SUBDIVISION	2	\$4,024	MERIDIAN
3/12/2012	ZEBULON HEIGHTS NO 04	SUBDIVISION	2	\$4,024	MERIDIAN
3/12/2012	ZEBULON HEIGHTS NO 04	SUBDIVISION	2	\$4,024	MERIDIAN
9/13/2012	ZEBULON HEIGHTS NO 05	SUBDIVISION	2	\$4,024	MERIDIAN
9/13/2012	ZEBULON HEIGHTS NO 05	SUBDIVISION	2	\$4,024	MERIDIAN
9/13/2012	ZEBULON HEIGHTS NO 05	SUBDIVISION	2	\$4,024	MERIDIAN
9/13/2012	ZEBULON HEIGHTS NO 05	SUBDIVISION	2	\$4,024	MERIDIAN
5/9/2012	OAKCREEK NO 02	SUBDIVISION	2	\$4,024	MERIDIAN
5/9/2012	OAKCREEK NO 02	SUBDIVISION	2	\$4,024	MERIDIAN
5/9/2012	OAKCREEK NO 02	SUBDIVISION	2	\$4,024	MERIDIAN
5/9/2012	OAKCREEK NO 02	SUBDIVISION	2	\$4,024	MERIDIAN
5/9/2012	OAKCREEK NO 02	SUBDIVISION	2	\$4,024	MERIDIAN
10/29/2012	PARAMOUNT NO 18,19,20,21	SUBDIVISION	2	\$4,024	MERIDIAN
10/29/2012	PARAMOUNT NO 18,19,20,21	SUBDIVISION	2	\$4,024	MERIDIAN
10/29/2012	PARAMOUNT NO 18,19,20,21	SUBDIVISION	2	\$4,024	MERIDIAN
10/29/2012	PARAMOUNT NO 18,19,20,21	SUBDIVISION	2	\$4,024	MERIDIAN
10/29/2012	PARAMOUNT NO 18,19,20,21	SUBDIVISION	2	\$4,024	MERIDIAN
10/29/2012	PARAMOUNT NO 18,19,20,21	SUBDIVISION	2	\$4,024	MERIDIAN
10/29/2012	PARAMOUNT NO 18,19,20,21	SUBDIVISION	2	\$4,024	MERIDIAN
10/29/2012	PARAMOUNT NO 18,19,20,21	SUBDIVISION	2	\$4,024	MERIDIAN
10/29/2012	PARAMOUNT NO 18,19,20,21	SUBDIVISION	2	\$4,024	MERIDIAN
10/29/2012	PARAMOUNT NO 18,19,20,21	SUBDIVISION	2	\$4,024	MERIDIAN

10/29/2012	PARAMOUNT NO 18,19,20,21	SUBDIVISION	2	\$4,024	MERIDIAN
10/29/2012	PARAMOUNT NO 18,19,20,21	SUBDIVISION	2	\$4,024	MERIDIAN
10/29/2012	PARAMOUNT NO 18,19,20,21	SUBDIVISION	2	\$4,024	MERIDIAN
10/29/2012	PARAMOUNT NO 18,19,20,21	SUBDIVISION	2	\$4,024	MERIDIAN
10/29/2012	PARAMOUNT NO 18,19,20,21	SUBDIVISION	2	\$4,024	MERIDIAN
10/29/2012	PARAMOUNT NO 18,19,20,21	SUBDIVISION	2	\$4,024	MERIDIAN
10/29/2012	PARAMOUNT NO 18,19,20,21	SUBDIVISION	2	\$4,024	MERIDIAN
10/29/2012	PARAMOUNT NO 18,19,20,21	SUBDIVISION	2	\$4,024	MERIDIAN
10/29/2012	PARAMOUNT NO 18,19,20,21	SUBDIVISION	2	\$4,024	MERIDIAN
10/29/2012	PARAMOUNT NO 18,19,20,21	SUBDIVISION	2	\$4,024	MERIDIAN
10/29/2012	PARAMOUNT NO 18,19,20,21	SUBDIVISION	2	\$4,024	MERIDIAN
10/29/2012	PARAMOUNT NO 18,19,20,21	SUBDIVISION	2	\$4,024	MERIDIAN
10/29/2012	PARAMOUNT NO 18,19,20,21	SUBDIVISION	2	\$4,024	MERIDIAN
10/29/2012	PARAMOUNT NO 18,19,20,21	SUBDIVISION	2	\$4,024	MERIDIAN
10/29/2012	PARAMOUNT NO 18,19,20,21	SUBDIVISION	2	\$4,024	MERIDIAN
10/29/2012	PARAMOUNT NO 18,19,20,21	SUBDIVISION	2	\$4,024	MERIDIAN
12/13/2012	SPURWING GREENS NO 02	SUBDIVISION	2	\$4,024	MERIDIAN
12/13/2012	SPURWING GREENS NO 02	SUBDIVISION	2	\$4,024	MERIDIAN
12/13/2012	SPURWING GREENS NO 02	SUBDIVISION	2	\$4,024	MERIDIAN
12/13/2012	SPURWING GREENS NO 02	SUBDIVISION	2	\$4,024	MERIDIAN
12/7/2012	PINEWOOD LAKES PHASE 08	SUBDIVISION	2	\$4,024	STAR
12/7/2012	PINEWOOD LAKES PHASE 08	SUBDIVISION	2	\$4,024	STAR
12/7/2012	PINEWOOD LAKES PHASE 08	SUBDIVISION	2	\$4,024	STAR
6/28/2012	WASATCH	SUBDIVISION	2	\$4,024	ADA COUNTY
6/28/2012	WASATCH	SUBDIVISION	2	\$4,024	ADA COUNTY
6/28/2012	WASATCH	SUBDIVISION	2	\$4,024	ADA COUNTY
6/28/2012	WASATCH	SUBDIVISION	2	\$4,024	ADA COUNTY
7/27/2012	HAZELWOOD VILLAGE NO 04,05	SUBDIVISION	2	\$4,024	ADA COUNTY
7/27/2012	HAZELWOOD VILLAGE NO 04,05	SUBDIVISION	2	\$4,024	ADA COUNTY
7/27/2012	HAZELWOOD VILLAGE NO 04,05	SUBDIVISION	2	\$4,024	ADA COUNTY
7/27/2012	HAZELWOOD VILLAGE NO 04,05	SUBDIVISION	2	\$4,024	ADA COUNTY
7/27/2012	HAZELWOOD VILLAGE NO 04,05	SUBDIVISION	2	\$4,024	ADA COUNTY

8/29/2012	PEPPERTREE NO 03	SUBDIVISION	2	\$4,024	ADA COUNTY
8/29/2012	PEPPERTREE NO 03	SUBDIVISION	2	\$4,024	ADA COUNTY
8/29/2012	PEPPERTREE NO 03	SUBDIVISION	2	\$4,024	ADA COUNTY
8/29/2012	PEPPERTREE NO 03	SUBDIVISION	2	\$4,024	ADA COUNTY
8/29/2012	PEPPERTREE NO 03	SUBDIVISION	2	\$4,024	ADA COUNTY
8/29/2012	PEPPERTREE NO 03	SUBDIVISION	2	\$4,024	ADA COUNTY
8/29/2012	PEPPERTREE NO 03	SUBDIVISION	2	\$4,024	ADA COUNTY
8/29/2012	PEPPERTREE NO 03	SUBDIVISION	2	\$4,024	ADA COUNTY
8/29/2012	PEPPERTREE NO 03	SUBDIVISION	2	\$4,024	ADA COUNTY
9/1/2012	CENTERCAL	SUBDIVISION	2	\$4,024	ADA COUNTY
9/1/2012	CENTERCAL	SUBDIVISION	2	\$4,024	ADA COUNTY
			TOTAL	553,300	

Appendix C



ACHD 2012 Sidewalk & Pedestrian Ramp Projects