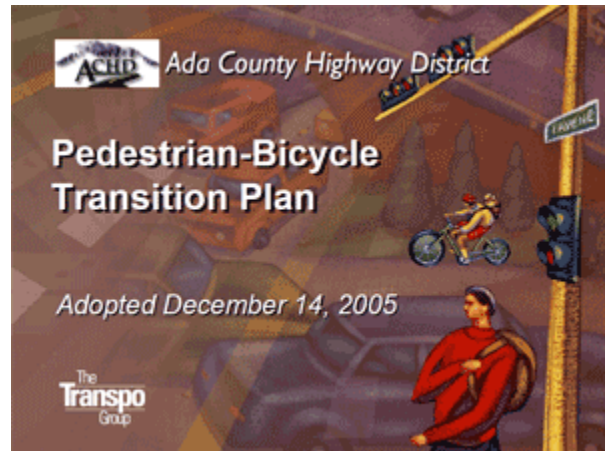


Ada County Highway District ADA Annual Report - Fiscal Year 2013

Background

On December 14, 2005 the Ada County Highway District (ACHD) Commission adopted the Pedestrian Bicycle Transition Plan (PBTP). The PBTP is intended to provide a comprehensive program to enhance the Ada County urban area pedestrian and bicycle system. This effort was initiated by ACHD, with a primary emphasis on addressing federal pedestrian planning guidelines and the regulatory requirements of the Americans with Disabilities Act (ADA), enacted on July 26, 1990.



ACHD has jurisdiction and responsibility for all public roads and streets within Ada County, Idaho, except state highways and interstate freeways. Under Idaho law, pedestrian (typically sidewalks) and bicycle system components of most public streets also fall within ACHD's jurisdiction.

The ADA provides comprehensive civil rights protections to persons with disabilities in the areas of employment, state and local government services, and access to public accommodations, transportation, telecommunications and other public facilities, including sidewalks.

There are five statutory titles to the ADA; Title II is of most concern to ACHD. The PBTP is intended to accommodate the most recent ADA policies and rules. Title II of the ADA prohibits state and local governments from discriminating against persons with disabilities by requiring them to make all programs, services, and activities accessible to persons with disabilities. Title II requires a public entity to evaluate its services, programs, policies, practices, and facilities to determine whether they are in compliance with the nondiscrimination requirements of the ADA.

The ADA requires that a transition plan be prepared, to describe any structural or physical changes required to make programs accessible. The transition plan outlines the methods by which physical or structural changes will be made to affect the nondiscrimination policies described in Title II. Commensurate with the ADA requirements for inventory and self-evaluation, ACHD targeted a significant portion of the overall planning effort to complete a walking inventory of the entire street-side pedestrian system within the Ada County urban areas.

In 2004-2005 more than 2,800 miles of existing and missing sidewalks and 19,300 street corners (with 15,500 curb ramps) were inventoried and assessed as part of ACHD's self-evaluation. Documenting the location, type and condition of sidewalks and curb ramps is an important step in the pedestrian planning

effort. A full inventory of missing sidewalks helps identify the critical “gaps” to fill. ACHD successfully completed a thorough inventory of the pedestrian system as the basis of the PBTP planning effort.

In addition to establishing the baseline data set, ACHD established standard operating procedures to ensure that the GIS database for sidewalk and curb ramps remains current as new facilities are installed and substandard facilities are repaired.

Purpose

Since the adoption of the PBTP, ACHD has worked diligently to plan, develop and construct improvements to the pedestrian system that bring the sidewalks and curb ramps in Ada County into compliance with ADA. The purpose of this Annual Report is to describe the improvements to the pedestrian system that occurred in fiscal year 2013. Each fiscal year, ACHD catalogs the new improvements, which are added to ACHD’s comprehensive pedestrian facility database system.

New Facilities

ACHD is constantly expanding the length of sidewalks and number of curb ramps in Ada County and its six cities. The new sidewalks and curb ramps are primarily constructed through one of the following programs or activities:

- Large scale ACHD “Capital Projects” such as roadway expansion, and overlays;
- Smaller scale ACHD “Community Programs Projects” such as sidewalk construction, safe routes to school projects, and curb ramps;
- Residential and commercial subdivisions;
- Miscellaneous commercial and residential building permits.



ACHD expends significant amounts of federal and local funds to construct new improvements to the pedestrian system each fiscal year. In addition to sidewalks and curb ramps that are constructed with ACHD Capital Projects (i.e. roadway widening and overlays), the ACHD Commission has dedicated five percent of ACHD’s annual capital budget to pedestrian specific projects (not associated with a specific roadway project). In 2009 Ada County voters approved an increase in vehicle registration fees to fund pedestrian projects near schools. These efforts by ACHD significantly exceed what is required by the Federal Highway Administration (FHWA)’s Safe Routes to School Program, a program which makes federal funding available through grants. ACHD applies for federal grants, but has historically been a leader in locally funded safe routes to school improvements.

In addition, private development through subdivisions and new development also contribute to the expansion of ACHD’s pedestrian network. ACHD works closely with developers to ensure that the pedestrian facilities constructed with private funds are ADA compliant. ACHD inspectors visually inspect and sign off on all improvements in the public right-of-prior to official acceptance of the improvements.

Facility Maintenance

ACHD also has a Sidewalk Repair Program that focuses on repairing or reconstructing substandard sidewalks and curb ramps. The sidewalk repair program is ACHD's programmatic approach to repairing and replacing substandard pedestrian facilities. This program also repairs or replaces sidewalk and curb ramps based on citizen concerns/requests.

Fiscal Year 2013 System Improvements

In fiscal year 2013, ACHD and private development installed over 26.7 miles of new sidewalks in Ada County. In addition to the new sidewalks, ACHD repaired over 4.8 miles of substandard sidewalks. Figure 1 below illustrates the total mileage of new and repaired sidewalk for fiscal year 2013 broken down by jurisdiction. The total estimated investment in new and repaired sidewalks projects for fiscal year 2013 is close to \$4.1 million. (Further project details and cost estimates are described in Appendix A and a map of project locations is shown in Appendix C).

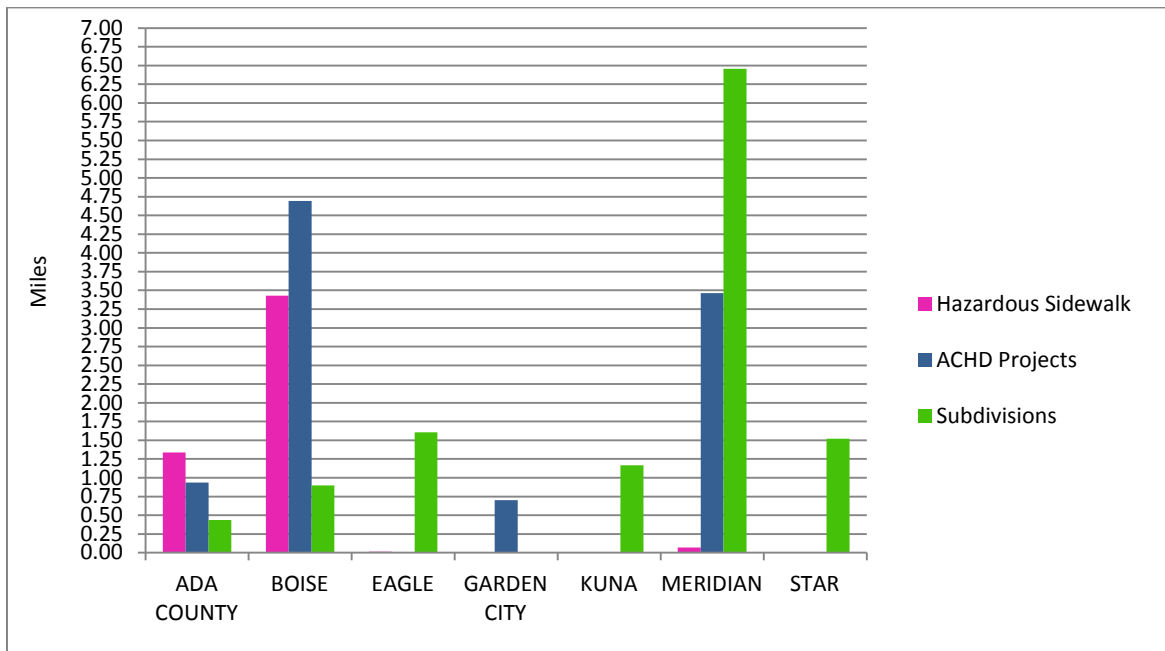


Figure 1: Sidewalk Projects, 2013

During the same time period, ACHD and private development installed 461 new pedestrian ramps across Ada County, shown in figure 2. ACHD through its maintenance activities and sidewalk repair program replaced or upgraded an additional 316 pedestrian ramps to bring them into compliance with current ADA standards. The total estimated investment in new and repaired/replaced curb ramps for fiscal year 2013 is \$1.6 million (Further project details and cost estimates are described in Appendix A and map of project locations is shown in Appendix B).

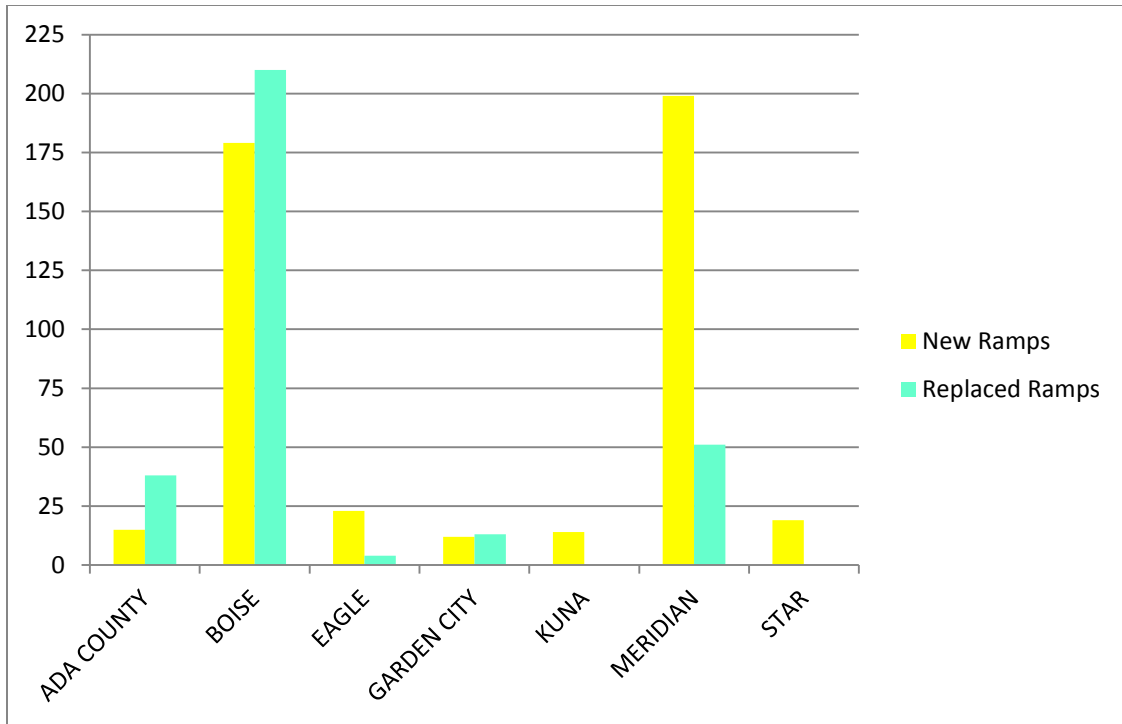


Figure 2: Ramp Projects, 2013

Appendix A: Sidewalk Projects

Fiscal Year 2013 Sidewalk Repair Projects

FY	PROJECT NAME	WIDTH (ft)	LENGTH (ft)	ESTIMATED COST ¹	JURISDICTION
2013	1394 Monterey	4	20	\$ 600	Boise
2013	2506 Palouse	4	60	\$ 1,800	Boise
2013	5000 W Greenbriar Ct	4	42	\$ 1,260	Boise
2013	6502 W York	4	17	\$ 510	Boise
2013	10350 Emerald	4	6	\$ 180	Boise
2013	430 S 10th	10	36	\$ 1,080	Boise
2013	5180 Forest Floor	4	20	\$ 600	Boise
2013	3131 State	7	67	\$ 2,010	Boise
2013	1209 S Longmont	4	20	\$ 600	Boise
2013	125 E Idaho	6	6	\$ 180	Boise
2013	2175 N Wilmington	4	75	\$ 2,250	Boise
2013	2103 N 14th	6	90	\$ 2,700	Boise
2013	1217 N 11th	6	120	\$ 3,600	Boise
2013	1301 N 11th	6	45	\$ 1,350	Boise
2013	7152 W Colt	4	30	\$ 900	Boise
2013	5446 Papago	4	60	\$ 1,800	Boise
2013	5454 Papago	4	60	\$ 1,800	Boise
2013	13303 Engelmann	4	120	\$ 3,600	Boise
2013	10406 Dason	4	60	\$ 1,800	Boise
2013	10420 Dason	4	80	\$ 2,400	Boise
2013	10452 Emerald	4	9	\$ 270	Boise
2013	6851 W Targee	4	15	\$ 450	Boise
2013	3518 N 36th	4	15	\$ 450	Boise
2013	1010 S Broadway	4	15	\$ 450	Boise
2013	4984 Rothmans	4	30	\$ 900	Boise
2013	4061 Overland	5	30	\$ 900	Boise
2013	12576 Braddock	4	15	\$ 450	Boise
2013	1225 Warm Springs	6	40	\$ 1,200	Boise
2013	9905 Edna	4	12	\$ 360	Boise
2013	2913 Overland	5	40	\$ 1,200	Boise
2013	10331 Hazel Park	4	12	\$ 360	Boise
2013	2100 E Victory	4	32	\$ 960	Boise
2013	1518 Bella	6	100	\$ 3,000	Boise
2013	1894 Table Rock	5	146	\$ 4,380	Boise
2013	2077 Table Rock	5	10	\$ 300	Boise

¹ All cost estimates for sidewalk based on ACHD average cost of \$30 per lineal foot for new sidewalk constructed during FY 2013. This cost includes excavation and base material.

2013	2080 Table Rock	5	95	\$ 2,850	Boise
2013	2110 Table Rock	5	62	\$ 1,860	Boise
2013	2144 Table Rock	5	82	\$ 2,460	Boise
2013	2270 Table Rock	5	107	\$ 3,210	Boise
2013	2620 Annett	4	18	\$ 540	Boise
2013	2703 Annett	4	8	\$ 240	Boise
2013	2709 Annett	4	46	\$ 1,380	Boise
2013	2714 Annett	4	9	\$ 270	Boise
2013	2715 Annett	4	65	\$ 1,950	Boise
2013	2722 Annett	4	69	\$ 2,070	Boise
2013	2804 Annett	4	68	\$ 2,040	Boise
2013	2805 Annett	4	56	\$ 1,680	Boise
2013	2813 Annett	4	24	\$ 720	Boise
2013	2814 Annett	4	21	\$ 630	Boise
2013	2820 Annett	4	11	\$ 330	Boise
2013	2821 Annett	4	101	\$ 3,030	Boise
2013	2903 Annett	4	105	\$ 3,150	Boise
2013	2911 Annett	4	43	\$ 1,290	Boise
2013	2918 Annett	4	67	\$ 2,010	Boise
2013	2919 Annett	4	12	\$ 360	Boise
2013	2603 Annette	4	30	\$ 900	Boise
2013	1607 Bedford	4	77	\$ 2,310	Boise
2013	1608 Bedford	4	9	\$ 270	Boise
2013	1613 Bedford	4	12	\$ 360	Boise
2013	1614 Bedford	4	32	\$ 960	Boise
2013	1622 Bedford	4	21	\$ 630	Boise
2013	1704 Bedford	4	49	\$ 1,470	Boise
2013	1707 Bedford	4	32	\$ 960	Boise
2013	1714 Bedford	4	33	\$ 990	Boise
2013	1721 Bedford	4	31	\$ 930	Boise
2013	1813 Bedford	4	36	\$ 1,080	Boise
2013	1814 Bedford	4	12	\$ 360	Boise
2013	1822 Bedford	4	76	\$ 2,280	Boise
2013	1830 Bedford	4	21	\$ 630	Boise
2013	1905 Bedford	4	70	\$ 2,100	Boise
2013	1913 Bedford	4	10	\$ 300	Boise
2013	1914 Bedford	4	56	\$ 1,680	Boise
2013	1922 Bedford	4	32	\$ 960	Boise
2013	2004 Bedford	4	10	\$ 300	Boise
2013	2011 Bedford	4	76	\$ 2,280	Boise
2013	2012 Bedford	4	16	\$ 480	Boise
2013	2016 Bedford	4	9	\$ 270	Boise
2013	2019 Bedford	4	120	\$ 3,600	Boise
2013	2023 Bedford	4	37	\$ 1,110	Boise
2013	2026 Bedford	4	6	\$ 180	Boise
2013	2027 Bedford	4	31	\$ 930	Boise

2013	2030 Bedford	4	40	\$ 1,200	Boise
2013	1607 Canal	4	50	\$ 1,500	Boise
2013	1608 Canal	4	30	\$ 900	Boise
2013	1615 Canal	4	73	\$ 2,190	Boise
2013	1620 Canal	4	46	\$ 1,380	Boise
2013	1700 Canal	4	9	\$ 270	Boise
2013	1711 Canal	4	24	\$ 720	Boise
2013	1714 Canal	4	10	\$ 300	Boise
2013	1715 Canal	4	40	\$ 1,200	Boise
2013	1821 Canal	4	7	\$ 210	Boise
2013	1829 Canal	4	37	\$ 1,110	Boise
2013	1905 Canal	4	18	\$ 540	Boise
2013	1908 Canal	4	21	\$ 630	Boise
2013	1913 Canal	4	32	\$ 960	Boise
2013	1914 Canal	4	18	\$ 540	Boise
2013	1921 Canal	4	36	\$ 1,080	Boise
2013	2000 Canal	4	10	\$ 300	Boise
2013	2001 Canal	4	8	\$ 240	Boise
2013	2006 Canal	4	87	\$ 2,610	Boise
2013	2012 Canal	4	70	\$ 2,100	Boise
2013	2017 Canal	4	69	\$ 2,070	Boise
2013	2105 Canal	4	56	\$ 1,680	Boise
2013	2110 Canal	4	8	\$ 240	Boise
2013	2116 Canal	4	13	\$ 390	Boise
2013	2200 Cherry	4	55	\$ 1,650	Boise
2013	2201 Cherry	4	37	\$ 1,110	Boise
2013	2208 Cherry	4	34	\$ 1,020	Boise
2013	2300 Cherry	4	64	\$ 1,920	Boise
2013	2301 Cherry	4	65	\$ 1,950	Boise
2013	2312 Cherry	4	41	\$ 1,230	Boise
2013	2318 Cherry	4	27	\$ 810	Boise
2013	2324 Cherry	4	45	\$ 1,350	Boise
2013	2329 Cherry	4	56	\$ 1,680	Boise
2013	2400 Cherry	4	127	\$ 3,810	Boise
2013	2407 Cherry	4	71	\$ 2,130	Boise
2013	2410 Cherry	4	46	\$ 1,380	Boise
2013	2414 Cherry	4	94	\$ 2,820	Boise
2013	2426 Cherry	4	11	\$ 330	Boise
2013	2430 Cherry	4	125	\$ 3,750	Boise
2013	2431 Cherry	4	31	\$ 930	Boise
2013	2434 Cherry	4	23	\$ 690	Boise
2013	2438 Cherry	4	65	\$ 1,950	Boise
2013	2435 Cherry	4	128	\$ 3,840	Boise
2013	2409 Columbus	4	68	\$ 2,040	Boise
2013	2415 Columbus	4	72	\$ 2,160	Boise
2013	2420 Columbus	4	5	\$ 150	Boise

2013	2421 Columbus	4	57	\$ 1,710	Boise
2013	2501 Columbus	4	35	\$ 1,050	Boise
2013	2507 Columbus	4	17	\$ 510	Boise
2013	2518 Columbus	4	18	\$ 540	Boise
2013	2526 Columbus	4	38	\$ 1,140	Boise
2013	2530 Columbus	4	8	\$ 240	Boise
2013	2544 Columbus	4	25	\$ 750	Boise
2013	2566 Columbus	4	5	\$ 150	Boise
2013	2570 Columbus	4	12	\$ 360	Boise
2013	2588 Columbus	5	47	\$ 1,410	Boise
2013	2601 Columbus	4	45	\$ 1,350	Boise
2013	2602 Columbus	4	9	\$ 270	Boise
2013	2607 Columbus	4	13	\$ 390	Boise
2013	2608 Columbus	4	84	\$ 2,520	Boise
2013	2703 Columbus	4	93	\$ 2,790	Boise
2013	2708 Columbus	4	46	\$ 1,380	Boise
2013	2709 Columbus	4	4	\$ 120	Boise
2013	2714 Columbus	4	16	\$ 480	Boise
2013	2715 Columbus	4	65	\$ 1,950	Boise
2013	2803 Columbus	4	81	\$ 2,430	Boise
2013	2812 Columbus	4	16	\$ 480	Boise
2013	2824 Columbus	4	30	\$ 900	Boise
2013	2825 Columbus	4	31	\$ 930	Boise
2013	2832 Columbus	4	41	\$ 1,230	Boise
2013	2833 Columbus	4	36	\$ 1,080	Boise
2013	2842 Columbus	4	6	\$ 180	Boise
2013	2922 Columbus	4	5	\$ 150	Boise
2013	2220 Elmcrest	4	26	\$ 780	Boise
2013	2225 Elmcrest	4	31	\$ 930	Boise
2013	2406 Elmcrest	4	76	\$ 2,280	Boise
2013	2412 Elmcrest	4	28	\$ 840	Boise
2013	2418 Elmcrest	4	13	\$ 390	Boise
2013	2500 Elmcrest	4	31	\$ 930	Boise
2013	2422 Ginger	4	11	\$ 330	Boise
2013	2330 Helen	4	22	\$ 660	Boise
2013	2600 Helen	4	113	\$ 3,390	Boise
2013	2601 Helen	4	84	\$ 2,520	Boise
2013	2607 Helen	4	4	\$ 120	Boise
2013	2204 Malad	4	126	\$ 3,780	Boise
2013	2207 Malad	4	41	\$ 1,230	Boise
2013	2210 Malad	4	91	\$ 2,730	Boise
2013	2211 Malad	4	26	\$ 780	Boise
2013	2302 Malad	4	82	\$ 2,460	Boise
2013	2308 Malad	4	10	\$ 300	Boise
2013	2314 Malad	4	28	\$ 840	Boise
2013	2400 Malad	4	47	\$ 1,410	Boise

2013	2406 Malad	4	18	\$ 540	Boise
2013	2407 Malad	4	11	\$ 330	Boise
2013	2413 Malad	4	26	\$ 780	Boise
2013	2487 Malad	4	8	\$ 240	Boise
2013	1806 Norcrest	4	56	\$ 1,680	Boise
2013	1809 Norcrest	4	71	\$ 2,130	Boise
2013	1825 Norcrest	4	108	\$ 3,240	Boise
2013	1915 Norcrest	4	25	\$ 750	Boise
2013	2003 Norcrest	4	11	\$ 330	Boise
2013	2015 Norcrest	4	27	\$ 810	Boise
2013	2021 Norcrest	4	59	\$ 1,770	Boise
2013	2101 Norcrest	4	46	\$ 1,380	Boise
2013	2102 Norcrest	4	75	\$ 2,250	Boise
2013	2107 Norcrest	4	17	\$ 510	Boise
2013	2118 Norcrest	4	27	\$ 810	Boise
2013	2119 Norcrest	4	33	\$ 990	Boise
2013	2202 Norcrest	4	53	\$ 1,590	Boise
2013	2207 Norcrest	4	7	\$ 210	Boise
2013	2212 Norcrest	4	70	\$ 2,100	Boise
2013	2308 Norcrest	4	26	\$ 780	Boise
2013	2311 Norcrest	4	50	\$ 1,500	Boise
2013	2314 Norcrest	4	37	\$ 1,110	Boise
2013	2317 Norcrest	4	29	\$ 870	Boise
2013	2324 Norcrest	4	30	\$ 900	Boise
2013	2400 Norcrest	4	18	\$ 540	Boise
2013	2401 Norcrest	4	10	\$ 300	Boise
2013	2406 Norcrest	4	44	\$ 1,320	Boise
2013	2413 Norcrest	4	59	\$ 1,770	Boise
2013	2419 Norcrest	4	19	\$ 570	Boise
2013	2408 Robert	4	61	\$ 1,830	Boise
2013	2409 Robert	4	79	\$ 2,370	Boise
2013	2412 Robert	4	128	\$ 3,840	Boise
2013	2418 Robert	4	34	\$ 1,020	Boise
2013	2800 Robert	4	14	\$ 420	Boise
2013	1803 Suncrest	4	19	\$ 570	Boise
2013	1808 Suncrest	4	12	\$ 360	Boise
2013	1814 Suncrest	4	35	\$ 1,050	Boise
2013	1815 Suncrest	4	33	\$ 990	Boise
2013	1901 Suncrest	4	9	\$ 270	Boise
2013	1907 Suncrest	4	24	\$ 720	Boise
2013	1912 Suncrest	4	19	\$ 570	Boise
2013	1918 Suncrest	4	31	\$ 930	Boise
2013	2003 Suncrest	4	15	\$ 450	Boise
2013	2004 Suncrest	4	10	\$ 300	Boise
2013	2010 Suncrest	4	46	\$ 1,380	Boise
2013	2015 Suncrest	4	20	\$ 600	Boise

2013	2107 Suncrest	4	31	\$ 930	Boise
2013	2108 Suncrest	4	17	\$ 510	Boise
2013	2113 Suncrest	4	16	\$ 480	Boise
2013	1610 Victory	4	17	\$ 510	Boise
2013	1714 Victory	4	28	\$ 840	Boise
2013	1814 Victory	4	6	\$ 180	Boise
2013	1922 Victory	4	13	\$ 390	Boise
2013	1930 Victory	4	18	\$ 540	Boise
2013	2100 Victory	4	61	\$ 1,830	Boise
2013	2126 Victory	4	12	\$ 360	Boise
2013	2180 Virginia	4	20	\$ 600	Boise
2013	2815 Virginia	4	36	\$ 1,080	Boise
2013	2340 Vista	4	100	\$ 3,000	Boise
2013	2450 Vista	5	36	\$ 1,080	Boise
2013	2500 Vista	5	30	\$ 900	Boise
2013	2520 Regan	6	81	\$ 2,430	Boise
2013	2516 Regan	6	15	\$ 450	Boise
2013	2512 Regan	6	18	\$ 540	Boise
2013	2510 Regan	6	12	\$ 360	Boise
2013	2506 Regan	6	12	\$ 360	Boise
2013	801 25th	6	49	\$ 1,470	Boise
2013	800 25th	4	158	\$ 4,740	Boise
2013	804 25th	4	20	\$ 600	Boise
2013	812 25th	4	12	\$ 360	Boise
2013	816 25th	4	17	\$ 510	Boise
2013	900 25th	4	16	\$ 480	Boise
2013	910 25th	4	14	\$ 420	Boise
2013	807 25th	6	18	\$ 540	Boise
2013	2500 Davis	6	40	\$ 1,200	Boise
2013	2506 Davis	6	25	\$ 750	Boise
2013	2510 Davis	6	15	\$ 450	Boise
2013	2510 Davis	6	5	\$ 150	Boise
2013	2518 Davis	6	40	\$ 1,200	Boise
2013	2522 Davis	6	15	\$ 450	Boise
2013	2602 Davis	6	10	\$ 300	Boise
2013	2614 Davis	6	15	\$ 450	Boise
2013	2618 Davis	6	10	\$ 300	Boise
2013	2611 Davis	6	40	\$ 1,200	Boise
2013	2521 Davis	6	15	\$ 450	Boise
2013	2517 Davis	6	20	\$ 600	Boise
2013	2505 Davis	6	5	\$ 150	Boise
2013	2505 Davis	6	15	\$ 450	Boise
2013	2501 Davis	6	14	\$ 420	Boise
2013	2501 Davis	6	26	\$ 780	Boise
2013	1508 28th	6	35	\$ 1,050	Boise
2013	2730 Heron	6	140	\$ 4,200	Boise

2013	2710 Heron	6	12	\$ 360	Boise
2013	1503 27th	6	46	\$ 1,380	Boise
2013	1507 27th	6	33	\$ 990	Boise
2013	1513 27th	6	50	\$ 1,500	Boise
2013	1515 27th	6	24	\$ 720	Boise
2013	2717 Hazel	6	30	\$ 900	Boise
2013	1516 27th	6	38	\$ 1,140	Boise
2013	1514 27th	6	16	\$ 480	Boise
2013	1510 27th	6	8	\$ 240	Boise
2013	1508 27th	6	12	\$ 360	Boise
2013	1502 27th	6	27	\$ 810	Boise
2013	1414 26th	6	6	\$ 180	Boise
2013	2518 Lemp	6	36	\$ 1,080	Boise
2013	1306 26th	6	12	\$ 360	Boise
2013	1304 26th	6	10	\$ 300	Boise
2013	1311 26th	6	18	\$ 540	Boise
2013	1315 26th	6	35	\$ 1,050	Boise
2013	2601 Lemp	6	30	\$ 900	Boise
2013	2609 Lemp	6	30	\$ 900	Boise
2013	2602 Lemp	6	12	\$ 360	Boise
2013	2707 Heron	6	3	\$ 90	Boise
2013	2705 27th	6	15	\$ 450	Boise
2013	801 17th	6	30	\$ 900	Boise
2013	805 17th	6	19	\$ 570	Boise
2013	807 17th	6	23	\$ 690	Boise
2013	819 17th	6	18	\$ 540	Boise
2013	901 17th	6	13	\$ 390	Boise
2013	907 17th	6	40	\$ 1,200	Boise
2013	909 17th	6	31	\$ 930	Boise
2013	915 17th	6	6	\$ 180	Boise
2013	919 17th	6	112	\$ 3,360	Boise
2013	1001 17th	6	98	\$ 2,940	Boise
2013	1004 17th	6	43	\$ 1,290	Boise
2013	1006 17th	6	13	\$ 390	Boise
2013	1015 17th	6	19	\$ 570	Boise
2013	1020 17th	6	80	\$ 2,400	Boise
2013	1101 17th	6	12	\$ 360	Boise
2013	1111 17th	6	13	\$ 390	Boise
2013	1202 17th	6	15	\$ 450	Boise
2013	1218 17th	6	134	\$ 4,020	Boise
2013	1417 17th	6	37	\$ 1,110	Boise
2013	1503 17th	6	157	\$ 4,710	Boise
2013	1509 17th	6	6	\$ 180	Boise
2013	1520 17th	6	51	\$ 1,530	Boise
2013	1602 17th	6	155	\$ 4,650	Boise
2013	1617 17th	6	21	\$ 630	Boise

2013	1704 17th	6	11	\$ 330	Boise
2013	1710 17th	6	63	\$ 1,890	Boise
2013	1801 17th	6	42	\$ 1,260	Boise
2013	801 18th	6	12	\$ 360	Boise
2013	802 18th	6	13	\$ 390	Boise
2013	805 18th	6	0	\$ -	Boise
2013	808 18th	6	19	\$ 570	Boise
2013	809 18th	6	33	\$ 990	Boise
2013	812 18th	6	30	\$ 900	Boise
2013	814 18th	6	63	\$ 1,890	Boise
2013	819 18th	6	18	\$ 540	Boise
2013	901 18th	6	18	\$ 540	Boise
2013	906 18th	6	21	\$ 630	Boise
2013	912 18th	6	30	\$ 900	Boise
2013	915 18th	6	12	\$ 360	Boise
2013	918 18th	6	21	\$ 630	Boise
2013	1001 18th	6	6	\$ 180	Boise
2013	1002 18th	6	24	\$ 720	Boise
2013	1007 18th	6	21	\$ 630	Boise
2013	1014 18th	6	37	\$ 1,110	Boise
2013	1018 18th	6	30	\$ 900	Boise
2013	1019 18th	6	7	\$ 210	Boise
2013	1102 18th	6	80	\$ 2,400	Boise
2013	1307 18th	6	53	\$ 1,590	Boise
2013	1311 18th	6	42	\$ 1,260	Boise
2013	1401 18th	6	12	\$ 360	Boise
2013	1414 18th	6	11	\$ 330	Boise
2013	1418 18th	6	18	\$ 540	Boise
2013	1512 18th	6	15	\$ 450	Boise
2013	1601 18th	6	41	\$ 1,230	Boise
2013	1606 18th	6	91	\$ 2,730	Boise
2013	1610 18th	6	20	\$ 600	Boise
2013	1614 18th	6	6	\$ 180	Boise
2013	1702 18th	6	19	\$ 570	Boise
2013	1703 18th	6	12	\$ 360	Boise
2013	1709 18th	6	12	\$ 360	Boise
2013	720 19th	6	9	\$ 270	Boise
2013	801 19th	6	23	\$ 690	Boise
2013	805 19th	6	17	\$ 510	Boise
2013	809 19th	6	51	\$ 1,530	Boise
2013	810 19th	6	17	\$ 510	Boise
2013	816 19th	6	59	\$ 1,770	Boise
2013	820 19th	6	18	\$ 540	Boise
2013	901 19th	6	72	\$ 2,160	Boise
2013	906 19th	6	6	\$ 180	Boise
2013	916 19th	6	50	\$ 1,500	Boise

2013	1001 19th	6	12	\$ 360	Boise
2013	1003 19th	6	39	\$ 1,170	Boise
2013	1004 19th	6	30	\$ 900	Boise
2013	1012 19th	6	28	\$ 840	Boise
2013	1101 19th	6	117	\$ 3,510	Boise
2013	1102 19th	6	18	\$ 540	Boise
2013	1107 19th	6	30	\$ 900	Boise
2013	1115 19th	6	6	\$ 180	Boise
2013	1208 19th	5	13	\$ 390	Boise
2013	1211 19th	6	60	\$ 1,800	Boise
2013	1212 19th	5	49	\$ 1,470	Boise
2013	1214 19th	5	41	\$ 1,230	Boise
2013	1216 19th	6	90	\$ 2,700	Boise
2013	1301 19th	5	71	\$ 2,130	Boise
2013	1305 19th	6	33	\$ 990	Boise
2013	1308 19th	6	17	\$ 510	Boise
2013	1312 19th	6	14	\$ 420	Boise
2013	1330 19th	6	33	\$ 990	Boise
2013	1401 19th	6	40	\$ 1,200	Boise
2013	1407 19th	6	12	\$ 360	Boise
2013	1408 19th	6	27	\$ 810	Boise
2013	1414 19th	6	48	\$ 1,440	Boise
2013	1418 19th	6	192	\$ 5,760	Boise
2013	1501 19th	6	30	\$ 900	Boise
2013	1503 19th	6	7	\$ 210	Boise
2013	1519 19th	6	30	\$ 900	Boise
2013	1608 19th	6	13	\$ 390	Boise
2013	1612 19th	6	11	\$ 330	Boise
2013	1709 19th	6	11	\$ 330	Boise
2013	1712 19th	6	21	\$ 630	Boise
2013	920 20th	6	18	\$ 540	Boise
2013	1002 20th	6	48	\$ 1,440	Boise
2013	1016 20th	6	12	\$ 360	Boise
2013	1020 20th	6	31	\$ 930	Boise
2013	1102 20th	6	38	\$ 1,140	Boise
2013	1214 20th	6	38	\$ 1,140	Boise
2013	1220 20th	6	167	\$ 5,010	Boise
2013	1302 20th	5	21	\$ 630	Boise
2013	1312 20th	6	0	\$ -	Boise
2013	1316 20th	6	28	\$ 840	Boise
2013	1318 20th	6	48	\$ 1,440	Boise
2013	1402 20th	5	6	\$ 180	Boise
2013	1410 20th	6	25	\$ 750	Boise
2013	1412 20th	6	19	\$ 570	Boise
2013	1418 20th	6	43	\$ 1,290	Boise
2013	1506 20th	6	48	\$ 1,440	Boise

2013	1514 20th	6	0	\$ -	Boise
2013	1520 20th	6	33	\$ 990	Boise
2013	1614 20th	6	12	\$ 360	Boise
2013	1700 20th	6	131	\$ 3,930	Boise
2013	1708 20th	6	11	\$ 330	Boise
2013	1880 Ada	6	17	\$ 510	Boise
2013	1818 Brumback	5	40	\$ 1,200	Boise
2013	1661 Eastman	6	42	\$ 1,260	Boise
2013	1804 Eastman	6	24	\$ 720	Boise
2013	1817 Eastman	6	12	\$ 360	Boise
2013	915 Harrison	6	6	\$ 180	Boise
2013	919 Harrison	6	57	\$ 1,710	Boise
2013	1103 Harrison	6	12	\$ 360	Boise
2013	1111 Harrison	6	21	\$ 630	Boise
2013	1221 Harrison	6	12	\$ 360	Boise
2013	1805 Harrison	6	51	\$ 1,530	Boise
2013	1817 Harrison	6	59	\$ 1,770	Boise
2013	1901 Harrison	6	27	\$ 810	Boise
2013	1907 Harrison	6	6	\$ 180	Boise
2013	1911 Harrison	6	6	\$ 180	Boise
2013	1915 Harrison	6	17	\$ 510	Boise
2013	1810 Lemp	5	39	\$ 1,170	Boise
2013	1812 Lemp	6	36	\$ 1,080	Boise
2013	1907 Lemp	6	52	\$ 1,560	Boise
2013	1711 Ridenbaugh	6	124	\$ 3,720	Boise
2013	1862 Ridenbaugh	6	27	\$ 810	Boise
2013	1918 Ridenbaugh	5	28	\$ 840	Boise
2013	1917 Sherman	6	52	\$ 1,560	Boise
2013	515 Logan	6	37	\$ 1,110	Boise
2013	509 Logan	6	54	\$ 1,620	Boise
2013	507 Logan	6	28	\$ 840	Boise
2013	505 Logan	6	60	\$ 1,800	Boise
2013	411 Logan	6	20	\$ 600	Boise
2013	9811 Bigwood	4	23	\$ 690	Boise
2013	9897 Bigwood	4	162	\$ 4,860	Boise
2013	9898 Bigwood	4	20	\$ 600	Boise
2013	9953 Bigwood	4	37	\$ 1,110	Boise
2013	9977 Bigwood	4	53	\$ 1,590	Boise
2013	9988 Bigwood	4	26	\$ 780	Boise
2013	10035 Bigwood	4	95	\$ 2,850	Boise
2013	10036 Bigwood	4	29	\$ 870	Boise
2013	10063 Bigwood	4	89	\$ 2,670	Boise
2013	10107 Bigwood	4	24	\$ 720	Boise
2013	10149 Bigwood	4	10	\$ 300	Boise
2013	10160 Bigwood	4	29	\$ 870	Boise
2013	10191 Bigwood	4	88	\$ 2,640	Boise

2013	10196 Bigwood	4	21	\$ 630	Boise
2013	10203 Bigwood	4	30	\$ 900	Boise
2013	10212 Bigwood	4	27	\$ 810	Boise
2013	10221 Bigwood	4	12	\$ 360	Boise
2013	10305 Bigwood	4	19	\$ 570	Boise
2013	10326 Bigwood	4	20	\$ 600	Boise
2013	10340 Bigwood	4	92	\$ 2,760	Boise
2013	10368 Bigwood	4	86	\$ 2,580	Boise
2013	10382 Bigwood	4	111	\$ 3,330	Boise
2013	10383 Bigwood	4	38	\$ 1,140	Boise
2013	10409 Bigwood	4	12	\$ 360	Boise
2013	10493 Bigwood	4	24	\$ 720	Boise
2013	10567 Bigwood	4	94	\$ 2,820	Boise
2013	10550 Bramblewood	4	12	\$ 360	Boise
2013	10584 Bramblewood	4	33	\$ 990	Boise
2013	6976 Five Mile	4	208	\$ 6,240	Boise
2013	10220 Huntwood	4	41	\$ 1,230	Boise
2013	10260 Huntwood	4	11	\$ 330	Boise
2013	10299 Huntwood	4	24	\$ 720	Boise
2013	10311 Huntwood	4	48	\$ 1,440	Boise
2013	10330 Huntwood	4	20	\$ 600	Boise
2013	10388 Huntwood	4	15	\$ 450	Boise
2013	10400 Huntwood	4	23	\$ 690	Boise
2013	10457 Huntwood	4	174	\$ 5,220	Boise
2013	10470 Huntwood	4	8	\$ 240	Boise
2013	10492 Huntwood	4	8	\$ 240	Boise
2013	10065 Idlewood	4	29	\$ 870	Boise
2013	10082 Idlewood	4	25	\$ 750	Boise
2013	10101 Idlewood	4	108	\$ 3,240	Boise
2013	10116 Idlewood	4	90	\$ 2,700	Boise
2013	10147 Idlewood	4	39	\$ 1,170	Boise
2013	10148 Idlewood	4	28	\$ 840	Boise
2013	10161 Idlewood	4	29	\$ 870	Boise
2013	6448 Ironwood	4		\$ -	Boise
2013	6517 Ironwood	4	96	\$ 2,880	Boise
2013	6534 Ironwood	4	13	\$ 390	Boise
2013	6555 Ironwood	4	68	\$ 2,040	Boise
2013	6620 Ironwood	4	20	\$ 600	Boise
2013	6688 Ironwood	4	20	\$ 600	Boise
2013	6718 Ironwood	4	41	\$ 1,230	Boise
2013	6781 Ironwood	4	28	\$ 840	Boise
2013	6810 Ironwood	4	20	\$ 600	Boise
2013	6833 Ironwood	4	51	\$ 1,530	Boise
2013	6901 Ironwood	4	15	\$ 450	Boise
2013	6922 Ironwood	4	32	\$ 960	Boise
2013	6971 Ironwood	4	48	\$ 1,440	Boise

2013	6990 Ironwood	4	19	\$ 570	Boise
2013	7012 Ironwood	4	10	\$ 300	Boise
2013	10355 Littlewood	4	28	\$ 840	Boise
2013	10360 Littlewood	4	65	\$ 1,950	Boise
2013	10403 Littlewood	4	17	\$ 510	Boise
2013	10422 Littlewood	4	8	\$ 240	Boise
2013	10481 Littlewood	4	28	\$ 840	Boise
2013	10490 Littlewood	4	42	\$ 1,260	Boise
2013	10490 Littlewood	4	25	\$ 750	Boise
2013	10313 Lockwood	4	286	\$ 8,580	Boise
2013	10365 Lockwood	4	15	\$ 450	Boise
2013	10440 Lockwood	4	16	\$ 480	Boise
2013	10470 Lockwood	4	27	\$ 810	Boise
2013	10494 Lockwood	4	84	\$ 2,520	Boise
2013	7070 Mistyglenn	4	84	\$ 2,520	Boise
2013	7104 Mistyglenn	4	89	\$ 2,670	Boise
2013	7128 Mistyglenn	4	93	\$ 2,790	Boise
2013	7162 Mistyglenn	4	89	\$ 2,670	Boise
2013	7227 Mistyglenn	4	16	\$ 480	Boise
2013	7263 Mistyglenn	4	24	\$ 720	Boise
2013	7560 Mistyglenn	4	57	\$ 1,710	Boise
2013	7620 Mistyglenn	4	13	\$ 390	Boise
2013	7702 Mistyglenn	4	44	\$ 1,320	Boise
2013	7703 Mistyglenn	4	32	\$ 960	Boise
2013	7765 Mistyglenn	4	91	\$ 2,730	Boise
2013	7766 Mistyglenn	4	22	\$ 660	Boise
2013	10502 Mossywood	4	11	\$ 330	Boise
2013	10536 Mossywood	4	25	\$ 750	Boise
2013	7100 Muirwood	4		\$ -	Boise
2013	7129 Muirwood	4		\$ -	Boise
2013	7281 Muirwood	4	88	\$ 2,640	Boise
2013	7102 Ravenswood	4	94	\$ 2,820	Boise
2013	7119 Ravenswood	4		\$ -	Boise
2013	7150 Ravenswood	4	41	\$ 1,230	Boise
2013	7172 Ravenswood	4	13	\$ 390	Boise
2013	7206 Ravenswood	4	79	\$ 2,370	Boise
2013	7222 Ravenswood	4	34	\$ 1,020	Boise
2013	7293 Ravenswood	4	40	\$ 1,200	Boise
2013	7304 Ravenswood	4	44	\$ 1,320	Boise
2013	7317 Ravenswood	4	23	\$ 690	Boise
2013	7366 Ravenswood	4	13	\$ 390	Boise
2013	7367 Ravenswood	4	29	\$ 870	Boise
2013	7416 Ravenswood	4	80	\$ 2,400	Boise
2013	7462 Ravenswood	4	193	\$ 5,790	Boise
2013	7463 Ravenswood	4	13	\$ 390	Boise
2013	6689 Ruddsdale	4	19	\$ 570	Boise

2013	6704 Ruddsdale	4	25	\$ 750	Boise
2013	6723 Ruddsdale	4	53	\$ 1,590	Boise
2013	10045 Shelterwood	4	29	\$ 870	Boise
2013	10073 Shelterwood	4	12	\$ 360	Boise
2013	10098 Shelterwood	4	5	\$ 150	Boise
2013	6522 Southdale	4	11	\$ 330	Boise
2013	6565 Southdale	4	33	\$ 990	Boise
2013	6567 Southdale	4	97	\$ 2,910	Boise
2013	6629 Southdale	4	17	\$ 510	Boise
2013	6673 Southdale	4	10	\$ 300	Boise
2013	6674 Southdale	4	23	\$ 690	Boise
2013	6720 Southdale	4	70	\$ 2,100	Boise
2013	6806 Southdale	4	32	\$ 960	Boise
2013	6921 Southdale	4	13	\$ 390	Boise
2013	7011 Southdale	4	7	\$ 210	Boise
2013	7266 Southdale	4	13	\$ 390	Boise
2013	7267 Southdale	4	25	\$ 750	Boise
2013	7288 Southdale	4	2	\$ 60	Boise
2013	7289 Southdale	4	18	\$ 540	Boise
2013	10023 Tanglewood	4	35	\$ 1,050	Boise
2013	10030 Tanglewood	4	40	\$ 1,200	Boise
2013	10055 Tanglewood	4	90	\$ 2,700	Boise
2013	10060 Tanglewood	4	26	\$ 780	Boise
2013	10090 Tanglewood	4	35	\$ 1,050	Boise
2013	10103 Tanglewood	4	91	\$ 2,730	Boise
2013	10110 Tanglewood	4	40	\$ 1,200	Boise
2013	10119 Tanglewood	4	13	\$ 390	Boise
2013	10124 Tanglewood	4	14	\$ 420	Boise
2013	10206 Tanglewood	4	14	\$ 420	Boise
2013	10237 Tanglewood	4	83	\$ 2,490	Boise
2013	10264 Tanglewood	4	27	\$ 810	Boise
2013	10267 Tanglewood	4	83	\$ 2,490	Boise
2013	10292 Tanglewood	4	12	\$ 360	Boise
2013	10293 Tanglewood	4	42	\$ 1,260	Boise
2013	10301 Tanglewood	4	25	\$ 750	Boise
2013	10312 Tanglewood	4	62	\$ 1,860	Boise
2013	10315 Tanglewood	4	61	\$ 1,830	Boise
2013	10333 Tanglewood	4	72	\$ 2,160	Boise
2013	10345 Tanglewood	4	50	\$ 1,500	Boise
2013	10350 Tanglewood	4	25	\$ 750	Boise
2013	10351 Tanglewood	4	88	\$ 2,640	Boise
2013	10403 Tanglewood	4	37	\$ 1,110	Boise
2013	10426 Tanglewood	4	8	\$ 240	Boise
2013	10441 Tanglewood	4	20	\$ 600	Boise
2013	10442 Tanglewood	4	59	\$ 1,770	Boise
2013	10475 Tanglewood	4	47	\$ 1,410	Boise

2013	10507 Tanglewood	4	70	\$ 2,100	Boise
2013	10525 Tanglewood	4	68	\$ 2,040	Boise
2013	9810 Trestlewood	4	43	\$ 1,290	Boise
2013	9852 Trestlewood	4	13	\$ 390	Boise
2013	10190 Trestlewood	4	54	\$ 1,620	Boise
2013	10212 Trestlewood	4	57	\$ 1,710	Boise
2013	10302 Trestlewood	4	5	\$ 150	Boise
2013	10430 Trestlewood	4	48	\$ 1,440	Boise
2013	10450 Trestlewood	4	12	\$ 360	Boise
2013	10500 Trestlewood	4		\$ -	Boise
2013	10572 Trestlewood	4	48	\$ 1,440	Boise
2013	1820 Camden	4	55	\$ 1,650	Boise
2013	8585 Stonehaven	4	16	\$ 480	Boise
2013	1825 Wilmington	4	22	\$ 660	Boise
2013	8585 Winchester	4	43	\$ 1,290	Boise
2013	225 16th	8	28	\$ 840	Boise
2013	1602 Bannock	6	15	\$ 450	Boise
2013	1604 Bannock	6	16	\$ 480	Boise
2013	1620 Bannock	6	145	\$ 4,350	Boise
2013	1625 Bannock	6	16	\$ 480	Boise
2013	1611 Jefferson	6	25	\$ 750	Boise
2013	1615 Jefferson	6	55	\$ 1,650	Boise
2013	2416 Main	9	14	\$ 420	Boise
2013	2416 Main	8	17	\$ 510	Boise
2013	2422 Main	8	19	\$ 570	Boise
2013	112 17th	6	393	\$ 11,790	Boise
2013	112 17th	6	14	\$ 420	Boise
2013	1600 Main	8	28	\$ 840	Boise
2013	1600 Main	6	17	\$ 510	Boise
2013	1600 Main	2	6	\$ 180	Boise
2013	112 17th	8	117	\$ 3,510	Boise
2013	1600 Main	8	4	\$ 120	Boise
2013	3781 Quenzer Way	4	20	\$ 600	Meridian
2013	2667 Ladle Rapids	4	12	\$ 360	Meridian
2013	2719 Sheryl	4	15	\$ 450	Meridian
2013	195 S Adkins	4	15	\$ 450	Meridian
2013	5833 Millwright	4	36	\$ 1,080	Garden City
2013	1499 Feather Nest	4	10	\$ 300	Eagle
2013	1506 Prohaska Ct	4	10	\$ 300	Eagle
2013	1350 Willow Wood Way	4	40	\$ 1,200	Eagle
2013	898 Stafford	4	15	\$ 450	Eagle

Fiscal Year 2013 ACHD Sidewalk Projects

FY	PROJECT NAME	WIDTH (ft)	LENGTH (ft)	ESTIMATED COST
2013	Misc Contract	7	90	\$ 2,695.00
2013	Sunset 38th-34th	5	776	\$ 23,291.94
2013	Sunset 38th-34th	5	624	\$ 18,724.58
2013	FIVE MILE / OVERLAND TURN LANE	5	169	\$ 5,077.36
2013	50th St - Chin/Green	5	134	\$ 4,033.00
2013	50th St - Chin/Green	5	130	\$ 3,913.38
2013	50th St - Chin/Green	5	195	\$ 5,840.76
2013	50th St - Chin/Green	5	33	\$ 982.68
2013	50th St - Chin/Green	5	282	\$ 8,447.05
2013	ROOSEVELT, NEZ-OVERL	5	209	\$ 6,267.26
2013	ROOSEVELT, NEZ-OVERL	5	272	\$ 8,168.53
2013	OVERLAND-VINNELL-ENTERTAINMENT	5	113	\$ 3,402.66
2013	PIERCE PK-STATE-HILL	5	225	\$ 6,764.01
2013	PIERCE PK-STATE-HILL	5	67	\$ 2,004.00
2013	PIERCE PK-STATE-HILL	5	238	\$ 7,129.67
2013	PIERCE PK-STATE-HILL	5	327	\$ 9,801.26
2013	PIERCE PK-STATE-HILL	5	79	\$ 2,359.22
2013	PIERCE PK-STATE-HILL	5	291	\$ 8,742.25
2013	PIERCE PK-STATE-HILL	5	840	\$ 25,205.03
2013	PIERCE PK-STATE-HILL	5	457	\$ 13,711.95
2013	PIERCE PK-STATE-HILL	5	593	\$ 17,777.78
2013	PIERCE PK-STATE-HILL	5	180	\$ 5,386.09
2013	PIERCE PK-STATE-HILL	5	294	\$ 8,814.59
2013	PIERCE PK-STATE-HILL	5	146	\$ 4,382.90
2013	PIERCE PK-STATE-HILL	5	741	\$ 22,244.34
2013	FIVE MILE MILCLAY-S*	5	474	\$ 14,210.79
2013	FIVE MILE MILCLAY-S*	5	311	\$ 9,318.28
2013	Boise-Holcomb-Eckert	5	1,438	\$ 43,127.58
2013	Boise-Holcomb-Eckert	5	778	\$ 23,338.70
2013	Boise-Holcomb-Eckert	5	1,428	\$ 42,851.90
2013	Boise-Holcomb-Eckert	5	92	\$ 2,771.58
2013	Boise-Holcomb-Eckert	5	1,174	\$ 35,234.98
2013	Boise-Holcomb-Eckert	5	195	\$ 5,854.48
2013	Boise-Holcomb-Eckert	5	1,209	\$ 36,281.92
2013	FRANKLIN-TEN MILE-LINDER	5	515	\$ 15,453.88
2013	FRANKLIN-TEN MILE-LINDER	5	50	\$ 1,492.98

2013	FRANKLIN-TEN MILE-LINDER	5	446	\$ 13,371.81
2013	FRANKLIN-TEN MILE-LINDER	5	307	\$ 9,210.96
2013	FRANKLIN-TEN MILE-LINDER	5	310	\$ 9,289.01
2013	FRANKLIN-TEN MILE-LINDER	5	909	\$ 27,272.56
2013	FRANKLIN-TEN MILE-LINDER	5	141	\$ 4,225.64
2013	FRANKLIN-TEN MILE-LINDER	5	552	\$ 16,547.53
2013	FRANKLIN-TEN MILE-LINDER	5	1,656	\$ 49,683.13
2013	FRANKLIN-TEN MILE-LINDER	5	288	\$ 8,645.96
2013	FRANKLIN-TEN MILE-LINDER	5	1,099	\$ 32,976.37
2013	FRANKLIN-TEN MILE-LINDER	5	182	\$ 5,469.75
2013	FRANKLIN-TEN MILE-LINDER	5	222	\$ 6,673.17
2013	FRANKLIN-TEN MILE-LINDER	5	156	\$ 4,673.21
2013	FRANKLIN-TEN MILE-LINDER	5	432	\$ 12,966.87
2013	FRANKLIN-TEN MILE-LINDER	5	150	\$ 4,497.02
2013	30TH ST EXT	8.5	49	\$ 1,469.66
2013	30TH ST EXT	8.5	640	\$ 19,201.46
2013	30TH ST EXT	8.5	578	\$ 17,347.98
2013	30TH ST EXT	8.5	113	\$ 3,398.95
2013	30TH ST EXT	8.5	151	\$ 4,532.06
2013	30TH ST EXT	8.5	106	\$ 3,168.27
2013	30TH ST EXT	8.5	132	\$ 3,958.42
2013	30TH ST EXT	8.5	665	\$ 19,948.50
2013	30TH ST EXT	8.5	24	\$ 712.57
2013	30TH ST EXT	8.5	29	\$ 873.91
2013	30TH ST EXT	8.5	162	\$ 4,859.82
2013	30TH ST EXT	8.5	150	\$ 4,486.88
2013	30TH ST EXT	8.5	425	\$ 12,753.80
2013	30TH ST EXT	8.5	269	\$ 8,084.69
2013	30TH ST EXT	8.5	265	\$ 7,942.14
2013	30TH ST EXT	8.5	288	\$ 8,629.45
2013	30TH ST EXT	8.5	306	\$ 9,172.84
2013	30TH ST EXT	8.5	153	\$ 4,602.00
2013	30TH ST EXT	8.5	166	\$ 4,972.69
2013	30TH ST EXT	8.5	314	\$ 9,425.76
2013	30TH ST EXT	8.5	642	\$ 19,272.76
2013	30TH ST EXT	8.5	150	\$ 4,493.69
2013	30TH ST EXT	8.5	119	\$ 3,560.22
2013	30TH ST EXT	8.5	106	\$ 3,173.35
2013	30TH ST EXT	8.5	116	\$ 3,479.03
2013	30TH ST EXT	8.5	643	\$ 19,284.10
2013	30TH ST EXT	8.5	1,014	\$ 30,420.54

2013	30TH ST EXT	8.5	145	\$	4,338.66
2013	30TH ST EXT	8.5	306	\$	9,167.47
2013	30TH ST EXT	8.5	250	\$	7,498.04
2013	30TH ST EXT	8.5	186	\$	5,592.51
2013	30TH ST EXT	8.5	147	\$	4,402.42
2013	30TH ST EXT	8.5	350	\$	10,509.11
2013	30TH ST EXT	8.5	435	\$	13,038.44
2013	30TH ST EXT	8.5	110	\$	3,311.63
2013	30TH ST EXT	8.5	112	\$	3,353.05
2013	30TH ST EXT	8.5	103	\$	3,087.75
2013	30TH ST EXT	8.5	71	\$	2,142.26
2013	30TH ST EXT	8.5	159	\$	4,780.61
2013	30TH ST EXT	8.5	130	\$	3,887.33
2013	30TH ST EXT	8.5	155	\$	4,655.56
2013	30TH ST EXT	8.5	50	\$	1,489.20
2013	30TH ST EXT	8.5	109	\$	3,257.33
2013	30TH ST EXT	8.5	73	\$	2,198.10
2013	30TH ST EXT	8.5	173	\$	5,191.58
2013	30TH ST EXT	8.5	64	\$	1,914.49
2013	30TH ST EXT	8.5	41	\$	1,224.69
2013	MERIDIAN RD - PHASE 2	7	112	\$	3,365.12
2013	MERIDIAN RD - PHASE 2	7	92	\$	2,745.79
2013	MERIDIAN RD - PHASE 2	7	106	\$	3,194.64
2013	MERIDIAN RD - PHASE 2	7	155	\$	4,663.18
2013	MERIDIAN RD - PHASE 2	7	138	\$	4,139.22
2013	MERIDIAN RD - PHASE 2	7	59	\$	1,776.43
2013	MERIDIAN RD - PHASE 2	7	57	\$	1,718.65
2013	MERIDIAN RD - PHASE 2	7	129	\$	3,864.95
2013	MERIDIAN RD - PHASE 2	7	66	\$	1,969.52
2013	MERIDIAN RD - PHASE 2	7	105	\$	3,140.32
2013	MERIDIAN RD - PHASE 2	7	106	\$	3,192.54
2013	MERIDIAN RD - PHASE 2	7	22	\$	664.14
2013	MERIDIAN RD - PHASE 2	7	145	\$	4,354.95
2013	MERIDIAN RD - PHASE 2	7	225	\$	6,746.80
2013	MERIDIAN RD - PHASE 2	7	366	\$	10,972.98
2013	MERIDIAN RD - PHASE 2	7	332	\$	9,973.64
2013	MERIDIAN RD - PHASE 2	7	323	\$	9,680.25
2013	MERIDIAN RD - PHASE 2	7	289	\$	8,661.66
2013	MERIDIAN RD - PHASE 2	7	128	\$	3,831.93
2013	MERIDIAN RD - PHASE 2	7	275	\$	8,258.71
2013	MERIDIAN RD - PHASE 2	7	159	\$	4,783.90

2013	MERIDIAN RD - PHASE 2	7	262	\$ 7,850.40
2013	MERIDIAN RD - PHASE 2	7	107	\$ 3,196.12
2013	MERIDIAN RD - PHASE 2	7	123	\$ 3,699.65
2013	MERIDIAN RD - PHASE 2	7	264	\$ 7,912.18
2013	MERIDIAN RD - PHASE 2	7	280	\$ 8,401.39
2013	MERIDIAN RD - PHASE 2	7	272	\$ 8,165.38
2013	MERIDIAN RD - PHASE 2	7	279	\$ 8,356.09
2013	MERIDIAN RD - PHASE 2	7	122	\$ 3,656.49
2013	MERIDIAN RD - PHASE 2	7	66	\$ 1,969.67
2013	MERIDIAN RD - PHASE 2	7	365	\$ 10,947.75
2013	MERIDIAN RD - PHASE 2	7	267	\$ 8,012.01
2013	MERIDIAN RD - PHASE 2	7	273	\$ 8,183.35
2013	MERIDIAN RD - PHASE 2	7	263	\$ 7,889.51
2013	MERIDIAN RD - PHASE 2	7	109	\$ 3,265.59
2013	MERIDIAN RD - PHASE 2	7	506	\$ 15,170.85
2013	MERIDIAN RD - PHASE 2	7	136	\$ 4,076.22
2013	MERIDIAN RD - PHASE 2	7	640	\$ 19,190.07
2013	MERIDIAN RD - PHASE 2	7	130	\$ 3,899.68
2013	MERIDIAN RD - PHASE 2	7	129	\$ 3,858.26
2013	MERIDIAN RD - PHASE 2	7	43	\$ 1,295.49
2013	MERIDIAN RD - PHASE 2	7	466	\$ 13,974.90
2013	MERIDIAN RD - PHASE 2	7	26	\$ 781.84
2013	MERIDIAN RD - PHASE 2	7	232	\$ 6,958.22
2013	MERIDIAN RD - PHASE 2	7	147	\$ 4,398.99
2013	MERIDIAN RD - PHASE 2	7	82	\$ 2,474.20
2013	MERIDIAN RD - PHASE 2	7	440	\$ 13,211.68
2013	MERIDIAN RD - PHASE 2	7	449	\$ 13,465.53
2013	MERIDIAN RD - PHASE 2	7	206	\$ 6,179.54
2013	MERIDIAN RD - PHASE 2	7	219	\$ 6,578.44
2013	MERIDIAN RD - PHASE 2	7	320	\$ 9,594.88
2013	MERIDIAN RD - PHASE 2	7	144	\$ 4,313.48
2013	MERIDIAN RD - PHASE 2	7	53	\$ 1,587.88
2013	MERIDIAN RD - PHASE 2	7	247	\$ 7,417.00
2013	MERIDIAN RD - PHASE 2	7	336	\$ 10,083.50
2013	MERIDIAN RD - PHASE 2	7	266	\$ 7,967.72
2013	MERIDIAN RD - PHASE 2	7	19	\$ 583.10
2013	MERIDIAN RD - PHASE 2	7	254	\$ 7,631.01
2013	MERIDIAN RD - PHASE 2	7	26	\$ 789.38
2013	MERIDIAN RD - PHASE 2	7	110	\$ 3,301.73
2013	MERIDIAN RD - PHASE 2	7	131	\$ 3,916.01
2013	MERIDIAN RD - PHASE 2	7	391	\$ 11,738.07

2013	MERIDIAN RD - PHASE 2	7	127	\$ 3,803.07
2013	MERIDIAN RD - PHASE 2	7	159	\$ 4,772.46
2013	MERIDIAN RD - PHASE 2	5	96	\$ 2,882.86
2013	MERIDIAN RD - PHASE 2	5	112	\$ 3,364.65
2013	MERIDIAN RD - PHASE 2	5	38	\$ 1,140.39
2013	MERIDIAN RD - PHASE 2	5	192	\$ 5,751.67
2013	MERIDIAN RD - PHASE 2	5	118	\$ 3,539.37
2013	MERIDIAN RD - PHASE 2	7	249	\$ 7,461.35
2013	MERIDIAN RD-PHASE 2		661	\$ 19,840.87
2013	MERIDIAN RD - PHASE 2	7	136	\$ 4,088.87
2013	E 36TH ST -CHIN/WATRFRNT	5	565	\$ 16,962.68
2013	E 36TH ST -CHIN/WATRFRNT	5	574	\$ 17,229.45
2013	E 36TH ST -CHIN/WATRFRNT	5	437	\$ 13,121.89
2013	E 36TH ST -CHIN/WATRFRNT	5	449	\$ 13,462.70
2013	E 36TH ST -CHIN/WATRFRNT	5	423	\$ 12,688.88
2013	E 36TH ST -CHIN/WATRFRNT	5	399	\$ 11,972.19
2013	2013 Rdway & Ped Improvement	5	102	\$ 3,068.66
2013	2013 Rdway & Ped Improvement	5	81	\$ 2,415.69
2013	2013 Rdway & Ped Improvement	5	42	\$ 1,262.75
2013	2013 LOCAL OVERLAYS		9	\$ 275.73
2013	2013 LOCAL OVERLAYS		9	\$ 263.65
2013	2013 LOCAL OVERLAYS		14	\$ 411.15
2013	2013 LOCAL OVERLAYS		11	\$ 340.88
2013	2013 LOCAL OVERLAYS		11	\$ 342.67
2013	2013 LOCAL OVERLAYS		14	\$ 431.50
2013	2013 LOCAL OVERLAYS		11	\$ 333.40
2013	2013 LOCAL OVERLAYS		21	\$ 631.90

Fiscal Year 2013 Subdivision – Sidewalk

FY	PROJECT NAME	WIDTH (ft)	LENGTH (ft)	ESTIMATED COST
2013	CRIMSON POINT NORTH NO 02	5	155	\$ 4,655.57
2013	ARCH ROCK TERRACE	5	623	\$ 18,695.68
2013	ARCH ROCK TERRACE	5	904	\$ 27,124.50
2013	ABODE	5	406	\$ 12,171.99
2013	ABODE	5	484	\$ 14,527.62
2013	HENRYS FORK NO 01	5	1,473	\$ 44,179.46
2013	HENRYS FORK NO 01	5	3,369	\$ 101,069.71
2013	HENRYS FORK NO 01	5	712	\$ 21,363.50
2013	BELLABROOK	5	729	\$ 21,882.07
2013	BELLABROOK	5	383	\$ 11,482.47
2013	CASTLEBURY WEST NO 03	5	1,099	\$ 32,957.91
2013	CASTLEBURY WEST NO 03	5	465	\$ 13,947.40
2013	CASTLEBURY WEST NO 03	5	1,358	\$ 40,739.68
2013	DESERTHAWK NO 01	5	1,723	\$ 51,681.52
2013	DESERTHAWK NO 01	5	730	\$ 21,892.79
2013	DESERTHAWK NO 01	5	518	\$ 15,549.60
2013	DESERTHAWK NO 01	5	189	\$ 5,670.81
2013	DESERTHAWK NO 01	5	887	\$ 26,613.84
2013	DESERTHAWK NO 01	5	1,965	\$ 58,960.67
2013	EYRIE CANYON NO 06	5	564	\$ 16,934.05
2013	EYRIE CANYON NO 06	5	240	\$ 7,192.30
2013	EYRIE CANYON NO 06	5	276	\$ 8,284.48
2013	EYRIE CANYON NO 06	5	493	\$ 14,785.09
2013	HARRINGTON CROSSING	5	47	\$ 1,400.85
2013	HARRINGTON CROSSING	5	57	\$ 1,706.87
2013	KINGSBRIDGE PHASE 03	5	896	\$ 26,892.45
2013	KINGSBRIDGE PHASE 03	5	757	\$ 22,717.85
2013	KINGSBRIDGE PHASE 03	5	2,345	\$ 70,349.40
2013	KINGSBRIDGE PHASE 03	5	1,445	\$ 43,364.42
2013	KINGSBRIDGE PHASE 03	5	1,967	\$ 59,015.29
2013	LARKSPUR NO 04	5	913	\$ 27,392.42
2013	LARKSPUR NO 04	5	512	\$ 15,361.46
2013	LARKSPUR NO 04	5	151	\$ 4,530.01
2013	LARKSPUR NO 04	5	145	\$ 4,351.80
2013	LARKSPUR NO 04	5	886	\$ 26,587.44
2013	LARKSPUR NO 04	5	426	\$ 12,781.44
2013	LARKSPUR NO 04	5	196	\$ 5,894.34

2013	LARKSPUR NO 04	5	642	\$ 19,259.39
2013	ROSELANDS NO 01	5	2,487	\$ 74,623.38
2013	ROSELANDS NO 01	5	2,201	\$ 66,042.35
2013	ROSELANDS NO 01	5	653	\$ 19,604.37
2013	ROSELANDS NO 01	5	126	\$ 3,794.14
2013	ROSELANDS NO 01	5	503	\$ 15,098.85
2013	ROSELANDS NO 01	5	1,574	\$ 47,212.93
2013	ROSELANDS NO 01	5	476	\$ 14,289.33
2013	SOLITUDE PLACE NO 03	5	1,449	\$ 43,482.15
2013	SOLITUDE PLACE NO 03	5	912	\$ 27,372.10
2013	SOLITUDE PLACE NO 03	5	860	\$ 25,805.18
2013	SOLITUDE PLACE NO 03	5	253	\$ 7,585.49
2013	SOLITUDE PLACE NO 03	5	1,479	\$ 44,360.30
2013	TRAILWIND	5	405	\$ 12,139.30
2013	TRAILWIND	5	63	\$ 1,883.79
2013	TRAILWIND	5	333	\$ 9,985.39
2013	TRAILWIND	5	127	\$ 3,813.05
2013	TRAILWIND	5	202	\$ 6,065.71
2013	TRAILWIND	5	181	\$ 5,443.61
2013	KINGSBRIDGE PHASE 03	5	269	\$ 8,056.02
2013	KINGSBRIDGE PHASE 03	5	283	\$ 8,492.85
2013	KINGSBRIDGE PHASE 03	5	378	\$ 11,335.68
2013	KINGSBRIDGE PHASE 03	5	743	\$ 22,282.06
2013	KINGSBRIDGE PHASE 03	5	456	\$ 13,672.00
2013	KINGSBRIDGE PHASE 03	5	662	\$ 19,865.17
2013	KINGSBRIDGE PHASE 03	5	713	\$ 21,378.49
2013	SOLITUDE PLACE NO 03	5	647	\$ 19,421.95
2013	SOLITUDE PLACE NO 03	5	806	\$ 24,182.43
2013	SOLITUDE PLACE NO 03	5	86	\$ 2,589.48
2013	SOLITUDE PLACE NO 03	5	86	\$ 2,585.30
2013	PETERSON CHEVROLET	6	306	\$ 9,175.22
2013	PETERSON CHEVROLET	6	421	\$ 12,642.76
2013	REFLECTION RIDGE NO 01	4	238	\$ 7,148.23
2013	REFLECTION RIDGE NO 01	4	509	\$ 15,278.37
2013	REFLECTION RIDGE NO 01	4	452	\$ 13,574.41
2013	REFLECTION RIDGE NO 01	4	1,633	\$ 48,991.76
2013	REFLECTION RIDGE NO 01	4	41	\$ 1,227.64
2013	REFLECTION RIDGE NO 01	4	33	\$ 998.50
2013	REFLECTION RIDGE NO 01	4	1,096	\$ 32,888.38
2013	REFLECTION RIDGE NO 01	4	648	\$ 19,435.89
2013	REFLECTION RIDGE NO 01	4	365	\$ 10,953.09

2013	REFLECTION RIDGE NO 01	4	514	\$ 15,433.95
2013	REFLECTION RIDGE NO 01	4	440	\$ 13,189.53
2013	REFLECTION RIDGE NO 01	4	242	\$ 7,248.62
2013	REFLECTION RIDGE NO 01	4	1,384	\$ 41,512.73
2013	REFLECTION RIDGE NO 01	4	150	\$ 4,502.93
2013	REFLECTION RIDGE NO 01	4	876	\$ 26,271.62
2013	REFLECTION RIDGE NO 01	4	1,252	\$ 37,561.27
2013	REFLECTION RIDGE NO 01	5	220	\$ 6,595.73
2013	COMMERCIAL DEVELOPMENT	5	27	\$ 799.13
2013	COMMERCIAL DEVELOPMENT	5	49	\$ 1,457.64
2013	COMMERCIAL DEVELOPMENT	5	159	\$ 4,782.38

Appendix B- Pedestrian Ramps

Fiscal Year 2013 Sidewalk Repair- Pedestrian Ramps

FY	PROJECT NAME	RAMP	ESTIMATED COST
2013	CRIMSON POINT NORTH*	2	\$ 4,024
2013	ABODE	1	\$ 2,012
2013	ABODE	1	\$ 2,012
2013	HENRYS FORK NO 01	1	\$ 2,012
2013	HENRYS FORK NO 01	1	\$ 2,012
2013	HENRYS FORK NO 01	1	\$ 2,012
2013	HENRYS FORK NO 01	1	\$ 2,012
2013	HENRYS FORK NO 01	1	\$ 2,012
2013	HENRYS FORK NO 01	1	\$ 2,012
2013	HENRYS FORK NO 01	1	\$ 2,012
2013	HENRYS FORK NO 01	1	\$ 2,012
2013	HENRYS FORK NO 01	1	\$ 2,012
2013	HENRYS FORK NO 01	1	\$ 2,012
2013	HENRYS FORK NO 01	1	\$ 2,012
2013	HENRYS FORK NO 01	2	\$ 4,024
2013	HENRYS FORK NO 01	2	\$ 4,024
2013	HENRYS FORK NO 01	2	\$ 4,024
2013	HENRYS FORK NO 01	1	\$ 2,012
2013	BELLABROOK	1	\$ 2,012
2013	BELLABROOK	1	\$ 2,012
2013	CASTLEBURY WEST NO *	1	\$ 2,012
2013	CASTLEBURY WEST NO *	1	\$ 2,012
2013	DESERTHAWK NO 01	1	\$ 2,012
2013	DESERTHAWK NO 01	1	\$ 2,012
2013	DESERTHAWK NO 01	1	\$ 2,012
2013	DESERTHAWK NO 01	1	\$ 2,012
2013	DESERTHAWK NO 01	1	\$ 2,012
2013	DESERTHAWK NO 01	1	\$ 2,012
2013	DESERTHAWK NO 01	1	\$ 2,012
2013	DESERTHAWK NO 01	1	\$ 2,012
2013	DESERTHAWK NO 01	1	\$ 2,012
2013	DESERTHAWK NO 01	1	\$ 2,012
2013	DESERTHAWK NO 01	1	\$ 2,012
2013	DESERTHAWK NO 01	1	\$ 2,012
2013	EYRIE CANYON NO 06	1	\$ 2,012
2013	EYRIE CANYON NO 06	1	\$ 2,012

2013	HARRINGTON CROSSING	1	\$	2,012
2013	HARRINGTON CROSSING	1	\$	2,012
2013	KINGSBRIDGE PHASE 03	1	\$	2,012
2013	KINGSBRIDGE PHASE 03	1	\$	2,012
2013	KINGSBRIDGE PHASE 03	1	\$	2,012
2013	KINGSBRIDGE PHASE 03	1	\$	2,012
2013	KINGSBRIDGE PHASE 03	1	\$	2,012
2013	KINGSBRIDGE PHASE 03	1	\$	2,012
2013	KINGSBRIDGE PHASE 03	1	\$	2,012
2013	KINGSBRIDGE PHASE 03	1	\$	2,012
2013	KINGSBRIDGE PHASE 03	1	\$	2,012
2013	KINGSBRIDGE PHASE 03	1	\$	2,012
2013	KINGSBRIDGE PHASE 03	1	\$	2,012
2013	KINGSBRIDGE PHASE 03	1	\$	2,012
2013	KINGSBRIDGE PHASE 03	1	\$	2,012
2013	KINGSBRIDGE PHASE 03	1	\$	2,012
2013	KINGSBRIDGE PHASE 03	1	\$	2,012
2013	KINGSBRIDGE PHASE 03	1	\$	2,012
2013	KINGSBRIDGE PHASE 03	1	\$	2,012
2013	KINGSBRIDGE PHASE 03	1	\$	2,012
2013	LARKSPUR NO 04	1	\$	2,012
2013	LARKSPUR NO 04	1	\$	2,012
2013	LARKSPUR NO 04	1	\$	2,012
2013	LARKSPUR NO 04	1	\$	2,012
2013	LARKSPUR NO 04	1	\$	2,012
2013	LARKSPUR NO 04	1	\$	2,012
2013	ROSELANDS NO 01	1	\$	2,012
2013	ROSELANDS NO 01	1	\$	2,012
2013	ROSELANDS NO 01	1	\$	2,012
2013	ROSELANDS NO 01	1	\$	2,012
2013	ROSELANDS NO 01	1	\$	2,012
2013	ROSELANDS NO 01	1	\$	2,012
2013	ROSELANDS NO 01	1	\$	2,012
2013	ROSELANDS NO 01	1	\$	2,012
2013	ROSELANDS NO 01	1	\$	2,012
2013	ROSELANDS NO 01	1	\$	2,012
2013	ROSELANDS NO 01	1	\$	2,012
2013	ROSELANDS NO 01	2	\$	4,024
2013	ROSELANDS NO 01	2	\$	4,024
2013	ROSELANDS NO 01	2	\$	4,024

2013	ROSELANDS NO 01	2	\$	4,024
2013	SOLITUDE PLACE NO 03	1	\$	2,012
2013	SOLITUDE PLACE NO 03	1	\$	2,012
2013	SOLITUDE PLACE NO 03	1	\$	2,012
2013	SOLITUDE PLACE NO 03	1	\$	2,012
2013	SOLITUDE PLACE NO 03	2	\$	4,024
2013	SOLITUDE PLACE NO 03	2	\$	4,024
2013	SOLITUDE PLACE NO 03	2	\$	4,024
2013	SOLITUDE PLACE NO 03	2	\$	4,024
2013	SOLITUDE PLACE NO 03	2	\$	4,024
2013	SOLITUDE PLACE NO 03	2	\$	4,024
2013	SOLITUDE PLACE NO 03	2	\$	4,024
2013	SOLITUDE PLACE NO 03	2	\$	4,024
2013	TRAILWIND	1	\$	2,012
2013	TRAILWIND	1	\$	2,012
2013	TRAILWIND	1	\$	2,012
2013	TRAILWIND	1	\$	2,012
2013	TRAILWIND	1	\$	2,012
2013	TRAILWIND	1	\$	2,012
2013	TRAILWIND	1	\$	2,012
2013	TRAILWIND	1	\$	2,012
2013	TRAILWIND	1	\$	2,012
2013	TRAILWIND	1	\$	2,012
2013	TRAILWIND	1	\$	2,012
2013	TRAILWIND	1	\$	2,012
2013	Sunset 38th to 34th	1	\$	2,012
2013	Sunset 38th to 34th	1	\$	2,012
2013	Sunset 38th to 34th	2	\$	4,024
2013	Sunset 38th to 34th	1	\$	2,012
2013	Sunset 38th to 34th	2	\$	4,024
2013	Sunset 38th to 34th	1	\$	2,012
2013	Sunset 38th to 34th	1	\$	2,012
2013	ROOSEVELT, NEZ-OVERL	1	\$	2,012
2013	ROOSEVELT, NEZ-OVERL	1	\$	2,012
2013	ROOSEVELT, NEZ-OVERL	1	\$	2,012
2013	ROOSEVELT, NEZ-OVERL	1	\$	2,012
2013	ROOSEVELT, NEZ-OVERL	1	\$	2,012
2013	ROOSEVELT, NEZ-OVERL	1	\$	2,012
2013	EAGLE RD, SH44-PLAZA	2	\$	4,024
2013	EAGLE RD, SH44-PLAZA	2	\$	4,024
2013	PIERCE PK-STATE-HILL	1	\$	2,012
2013	PIERCE PK-STATE-HILL	1	\$	2,012

2013	PIERCE PK-STATE-HILL	1	\$	2,012
2013	PIERCE PK-STATE-HILL	1	\$	2,012
2013	PIERCE PK-STATE-HILL	1	\$	2,012
2013	PIERCE PK-STATE-HILL	1	\$	2,012
2013	PIERCE PK-STATE-HILL	1	\$	2,012
2013	PIERCE PK-STATE-HILL	1	\$	2,012
2013	PIERCE PK-STATE-HILL	1	\$	2,012
2013	PIERCE PK-STATE-HILL	1	\$	2,012
2013	PIERCE PK-STATE-HILL	1	\$	2,012
2013	PIERCE PK-STATE-HILL	1	\$	2,012
2013	PIERCE PK-STATE-HILL	1	\$	2,012
2013	PIERCE PK-STATE-HILL	1	\$	2,012
2013	PIERCE PK-STATE-HILL	1	\$	2,012
2013	PIERCE PK-STATE-HILL	1	\$	2,012
2013	PIERCE PK-STATE-HILL	1	\$	2,012
2013	FIVE MILE MILCLAY-S*	1	\$	2,012
2013	FIVE MILE MILCLAY-S*	1	\$	2,012
2013	FIVE MILE MILCLAY-S*	1	\$	2,012
2013	Boise-Holcomb-Eckert	1	\$	2,012
2013	Boise-Holcomb-Eckert	1	\$	2,012
2013	Boise-Holcomb-Eckert	1	\$	2,012
2013	Boise-Holcomb-Eckert	1	\$	2,012
2013	Boise-Holcomb-Eckert	1	\$	2,012
2013	Boise-Holcomb-Eckert	1	\$	2,012
2013	Boise-Holcomb-Eckert	1	\$	2,012
2013	Boise-Holcomb-Eckert	1	\$	2,012
2013	Boise-Holcomb-Eckert	1	\$	2,012
2013	Boise-Holcomb-Eckert	1	\$	2,012
2013	Boise-Holcomb-Eckert	1	\$	2,012
2013	FRANKLIN-TENMILE-LI*	1	\$	2,012
2013	FRANKLIN-TENMILE-LI*	1	\$	2,012
2013	FRANKLIN-TENMILE-LI*	1	\$	2,012
2013	FRANKLIN-TENMILE-LI*	1	\$	2,012
2013	FRANKLIN-TENMILE-LI*	1	\$	2,012
2013	FRANKLIN-TENMILE-LI*	1	\$	2,012
2013	FRANKLIN-TENMILE-LI*	1	\$	2,012
2013	FRANKLIN-TENMILE-LI*	1	\$	2,012
2013	FRANKLIN-TENMILE-LI*	1	\$	2,012
2013	FRANKLIN-TENMILE-LI*	1	\$	2,012
2013	FRANKLIN-TENMILE-LI*	1	\$	2,012
2013	FRANKLIN-TENMILE-LI*	1	\$	2,012
2013	FRANKLIN-TENMILE-LI*	1	\$	2,012
2013	FRANKLIN-TENMILE-LI*	1	\$	2,012

2013	30TH ST EXT	1	\$	2,012
2013	30TH ST EXT	1	\$	2,012
2013	30TH ST EXT	2	\$	4,024
2013	30TH ST EXT	1	\$	2,012
2013	30TH ST EXT	1	\$	2,012
2013	30TH ST EXT	1	\$	2,012
2013	30TH ST EXT	1	\$	2,012
2013	30TH ST EXT	1	\$	2,012
2013	30TH ST EXT	1	\$	2,012
2013	30TH ST EXT	2	\$	4,024
2013	30TH ST EXT	1	\$	2,012
2013	30TH ST EXT	1	\$	2,012
2013	30TH ST EXT	1	\$	2,012
2013	30TH ST EXT	1	\$	2,012
2013	30TH ST EXT	1	\$	2,012
2013	30TH ST EXT	1	\$	2,012
2013	30TH ST EXT	1	\$	2,012
2013	30TH ST EXT	1	\$	2,012
2013	30TH ST EXT	1	\$	2,012
2013	30TH ST EXT	1	\$	2,012
2013	30TH ST EXT	1	\$	2,012
2013	30TH ST EXT	1	\$	2,012
2013	30TH ST EXT	1	\$	2,012
2013	30TH ST EXT	1	\$	2,012
2013	30TH ST EXT	1	\$	2,012
2013	30TH ST EXT	1	\$	2,012
2013	30TH ST EXT	1	\$	2,012
2013	30TH ST EXT	1	\$	2,012
2013	30TH ST EXT	1	\$	2,012
2013	30TH ST EXT	1	\$	2,012
2013	30TH ST EXT	1	\$	2,012
2013	30TH ST EXT	1	\$	2,012
2013	30TH ST EXT	1	\$	2,012
2013	30TH ST EXT	1	\$	2,012
2013	30TH ST EXT	1	\$	2,012
2013	30TH ST EXT	1	\$	2,012
2013	30TH ST EXT	1	\$	2,012
2013	30TH ST EXT	1	\$	2,012
2013	30TH ST EXT	1	\$	2,012
2013	30TH ST EXT	1	\$	2,012
2013	30TH ST EXT	1	\$	2,012
2013	30TH ST EXT	1	\$	2,012
2013	30TH ST EXT	1	\$	2,012
2013	30TH ST EXT	1	\$	2,012
2013	30TH ST EXT	1	\$	2,012
2013	30TH ST EXT	1	\$	2,012
2013	30TH ST EXT	1	\$	2,012
2013	30TH ST EXT	1	\$	2,012
2013	30TH ST EXT	1	\$	2,012

2013	30TH ST EXT	1	\$	2,012
2013	30TH ST EXT	1	\$	2,012
2013	30TH ST EXT	2	\$	4,024
2013	30TH ST EXT	2	\$	4,024
2013	30TH ST EXT	1	\$	2,012
2013	30TH ST EXT	1	\$	2,012
2013	30TH ST EXT	1	\$	2,012
2013	30TH ST EXT	1	\$	2,012
2013	30TH ST EXT	1	\$	2,012
2013	30TH ST EXT	1	\$	2,012
2013	30TH ST EXT	1	\$	2,012
2013	30TH ST EXT	1	\$	2,012
2013	30TH ST EXT	1	\$	2,012
2013	30TH ST EXT	1	\$	2,012
2013	30TH ST EXT	1	\$	2,012
2013	30TH ST EXT	1	\$	2,012
2013	PETERSON CHEVROLET	1	\$	2,012
2013	PETERSON CHEVROLET	1	\$	2,012
2013	PETERSON CHEVROLET	1	\$	2,012
2013	PETERSON CHEVROLET	1	\$	2,012
2013	FAIRVIEW/CLOVERDALE	2	\$	4,024
2013	FAIRVIEW/CLOVERDALE	2	\$	4,024
2013	FAIRVIEW/CLOVERDALE	2	\$	4,024
2013	MERIDIAN RD-PHASE 2	1	\$	2,012
2013	MERIDIAN RD-PHASE 2	1	\$	2,012
2013	MERIDIAN RD-PHASE 2	1	\$	2,012
2013	MERIDIAN RD-PHASE 2	1	\$	2,012
2013	MERIDIAN RD-PHASE 2	1	\$	2,012
2013	MERIDIAN RD-PHASE 2	1	\$	2,012
2013	MERIDIAN RD-PHASE 2	1	\$	2,012
2013	MERIDIAN RD-PHASE 2	1	\$	2,012
2013	MERIDIAN RD-PHASE 2	1	\$	2,012
2013	MERIDIAN RD-PHASE 2	1	\$	2,012
2013	MERIDIAN RD-PHASE 2	1	\$	2,012
2013	MERIDIAN RD-PHASE 2	1	\$	2,012
2013	MERIDIAN RD-PHASE 2	1	\$	2,012
2013	MERIDIAN RD-PHASE 2	1	\$	2,012
2013	MERIDIAN RD-PHASE 2	1	\$	2,012
2013	MERIDIAN RD-PHASE 2	1	\$	2,012
2013	MERIDIAN RD-PHASE 2	1	\$	2,012
2013	MERIDIAN RD-PHASE 2	1	\$	2,012
2013	MERIDIAN RD-PHASE 2	1	\$	2,012
2013	MERIDIAN RD-PHASE 2	1	\$	2,012

2013	MERIDIAN RD-PHASE 2	1	\$	2,012
2013	MERIDIAN RD-PHASE 2	1	\$	2,012
2013	MERIDIAN RD-PHASE 2	1	\$	2,012
2013	MERIDIAN RD-PHASE 2	1	\$	2,012
2013	MERIDIAN RD-PHASE 2	1	\$	2,012
2013	MERIDIAN RD-PHASE 2	1	\$	2,012
2013	MERIDIAN RD-PHASE 2	1	\$	2,012
2013	MERIDIAN RD-PHASE 2	1	\$	2,012
2013	MERIDIAN RD-PHASE 2	1	\$	2,012
2013	MERIDIAN RD-PHASE 2	1	\$	2,012
2013	MERIDIAN RD-PHASE 2	1	\$	2,012
2013	MERIDIAN RD-PHASE 2	1	\$	2,012
2013	MERIDIAN RD-PHASE 2	2	\$	4,024
2013	MERIDIAN RD-PHASE 2	2	\$	4,024
2013	MERIDIAN RD-PHASE 2	1	\$	2,012
2013	MERIDIAN RD-PHASE 2	1	\$	2,012
2013	MERIDIAN RD-PHASE 2	2	\$	4,024
2013	MERIDIAN RD-PHASE 2	2	\$	4,024
2013	MERIDIAN RD-PHASE 2	2	\$	4,024
2013	MERIDIAN RD-PHASE 2	2	\$	4,024
2013	MERIDIAN RD-PHASE 2	2	\$	4,024
2013	MERIDIAN RD-PHASE 2	2	\$	4,024
2013	MERIDIAN RD-PHASE 2	2	\$	4,024
2013	MERIDIAN RD-PHASE 2	2	\$	4,024
2013	MERIDIAN RD-PHASE 2	2	\$	4,024
2013	MERIDIAN RD-PHASE 2	1	\$	2,012
2013	MERIDIAN RD-PHASE 2	1	\$	2,012
2013	MERIDIAN RD-PHASE 2	1	\$	2,012
2013	MERIDIAN RD-PHASE 2	1	\$	2,012
2013	MERIDIAN RD-PHASE 2	1	\$	2,012
2013	MERIDIAN RD-PHASE 2	1	\$	2,012
2013	MERIDIAN RD-PHASE 2	1	\$	2,012
2013	MERIDIAN RD-PHASE 2	1	\$	2,012
2013	MERIDIAN RD-PHASE 2	1	\$	2,012
2013	MERIDIAN RD-PHASE 2	1	\$	2,012
2013	MERIDIAN RD-PHASE 2	1	\$	2,012
2013	MERIDIAN RD-PHASE 2	1	\$	2,012
2013	MERIDIAN RD-PHASE 2	1	\$	2,012
2013	MERIDIAN RD-PHASE 2	1	\$	2,012
2013	MERIDIAN RD-PHASE 2	1	\$	2,012
2013	MERIDIAN RD-PHASE 2	1	\$	2,012
2013	MERIDIAN RD-PHASE 2	1	\$	2,012
2013	MERIDIAN RD-PHASE 2	1	\$	2,012
2013	MERIDIAN RD-PHASE 2	1	\$	2,012
2013	MERIDIAN RD-PHASE 2	1	\$	2,012

2013	REFLECTION RIDGE NO*	1	\$	2,012
2013	REFLECTION RIDGE NO*	2	\$	4,024
2013	MERIDIAN RD-PHASE 2	1	\$	2,012
2013	MERIDIAN RD-PHASE 2	1	\$	2,012
2013	E 36TH ST - CHINDEN*	1	\$	2,012
2013	E 36TH ST - CHINDEN*	1	\$	2,012
2013	E 36TH ST - CHINDEN*	1	\$	2,012
2013	E 36TH ST - CHINDEN*	1	\$	2,012
2013	E 36TH ST - CHINDEN*	2	\$	4,024
2013	E 36TH ST - CHINDEN*	2	\$	4,024
2013	E 36TH ST - CHINDEN*	2	\$	4,024
2013	E 36TH ST - CHINDEN*	2	\$	4,024
2013	2013 LOCAL OVERLAYS*	1	\$	2,012
2013	2013 LOCAL OVERLAYS*	1	\$	2,012
2013	2013 LOCAL OVERLAYS*	1	\$	2,012
2013	2013 LOCAL OVERLAYS*	1	\$	2,012
2013	2013 LOCAL OVERLAYS*	1	\$	2,012
2013	2013 LOCAL OVERLAYS*	1	\$	2,012
2013	2013 LOCAL OVERLAYS*	1	\$	2,012
2013	2013 LOCAL OVERLAYS*	1	\$	2,012
2013	2013 LOCAL OVERLAYS*	1	\$	2,012
2013	2013 LOCAL OVERLAYS*	1	\$	2,012
2013	2013 LOCAL OVERLAYS*	1	\$	2,012
2013	2013 LOCAL OVERLAYS*	1	\$	2,012
2013	2013 LOCAL OVERLAYS*	1	\$	2,012
2013	2013 LOCAL OVERLAYS*	1	\$	2,012
2013	2013 LOCAL OVERLAYS*	1	\$	2,012
2013	2013 LOCAL OVERLAYS*	1	\$	2,012
2013	COMMERCIAL DEV	1	\$	2,012
2013	2013 LOCAL OVERLAYS*	2	\$	4,024
2013	2013 RDWAY& PED IMP	1	\$	2,012
2013	2013 LOCAL OVERLAYS	1	\$	2,012
2013	2013 LOCAL OVERLAYS	1	\$	2,012
2013	2013 LOCAL OVERLAYS	1	\$	2,012
2013	2013 LOCAL OVERLAYS	1	\$	2,012
2013	2013 LOCAL OVERLAYS	1	\$	2,012
2013	2013 LOCAL OVERLAYS	2	\$	4,024

Fiscal Year 2013 New Pedestrian Ramp Projects

FY	PROJECT NAME	RAMP	ESTIMATED COST
2013	112 17th	2	\$ 4,024
2013	2103 N 14th	2	\$ 4,024
2013	1217 N 11th	2	\$ 4,024
2013	1301 N 11th	2	\$ 4,024
2013	Haz SW Contract	1	\$ 2,012
2013	Haz SW Contract	1	\$ 2,012
2013	2100 E Victory	1	\$ 2,012
2013	2100 E Victory	1	\$ 2,012
2013	317 Main St	1	\$ 2,012
2013	317 Main St	1	\$ 2,012
2013	2520 Regan	2	\$ 4,024
2013	2450 Vista	1	\$ 2,012
2013	2500 Vista	1	\$ 2,012
2013	2500 Vista	1	\$ 2,012
2013	2450 Vista	1	\$ 2,012
2013	2520 Regan	2	\$ 4,024
2013	Haz SW Contract	2	\$ 4,024
2013	Haz SW Contract	2	\$ 4,024
2013	2717 Hazel	2	\$ 4,024
2013	1516 27th	2	\$ 4,024
2013	1102 18th	2	\$ 4,024
2013	1018 18th	2	\$ 4,024
2013	1330 19th	2	\$ 4,024
2013	1418 19th	2	\$ 4,024
2013	Haz SW Contract	1	\$ 2,012
2013	Haz SW Contract	1	\$ 2,012
2013	10493 Bigwood	1	\$ 2,012
2013	10567 Bigwood	1	\$ 2,012
2013	10302 Trestlewood	1	\$ 2,012
2013	Haz SW Contract	1	\$ 2,012
2013	Haz SW Contract	1	\$ 2,012
2013	Haz SW Contract	1	\$ 2,012
2013	10305 Bigwood	1	\$ 2,012
2013	Haz SW Contract	1	\$ 2,012
2013	Haz SW Contract	1	\$ 2,012
2013	Haz SW Contract	1	\$ 2,012
2013	Haz SW Contract	1	\$ 2,012

2013	Haz SW Contract	1	\$	2,012
2013	Haz SW Contract	1	\$	2,012
2013	Haz SW Contract	1	\$	2,012
2013	10550 Bramblewood	1	\$	2,012
2013	Haz SW Contract	1	\$	2,012
2013	Haz SW Contract	1	\$	2,012
2013	10360 Littlewood	1	\$	2,012
2013	10422 Littlewood	1	\$	2,012
2013	10490 Littlewood	1	\$	2,012
2013	10365 Lockwood	1	\$	2,012
2013	10440 Lockwood	1	\$	2,012
2013	Haz SW Contract	1	\$	2,012
2013	Haz SW Contract	1	\$	2,012
2013	Haz SW Contract	1	\$	2,012
2013	Haz SW Contract	1	\$	2,012
2013	10382 Bigwood	1	\$	2,012
2013	10492 Huntwood	1	\$	2,012
2013	Haz SW Contract	1	\$	2,012
2013	10036 Bigwood	1	\$	2,012
2013	Haz SW Contract	1	\$	2,012
2013	Haz SW Contract	1	\$	2,012
2013	Haz SW Contract	1	\$	2,012
2013	Haz SW Contract	1	\$	2,012
2013	2804 Annett	1	\$	2,012
2013	2805 Annett	1	\$	2,012
2013	2207 Malad	1	\$	2,012
2013	2302 Malad	1	\$	2,012
2013	2420 Columbus	1	\$	2,012
2013	2180 Virginia	1	\$	2,012
2013	1721 Bedford	1	\$	2,012
2013	2903 Annett	1	\$	2,012
2013	2821 Annett	1	\$	2,012
2013	2820 Annett	1	\$	2,012
2013	2919 Annett	1	\$	2,012
2013	2918 Annett	1	\$	2,012
2013	2722 Annett	1	\$	2,012
2013	2715 Annett	1	\$	2,012
2013	1809 Norcrest	1	\$	2,012
2013	1806 Norcrest	1	\$	2,012
2013	2105 Canal	1	\$	2,012
2013	2803 Columbus	1	\$	2,012

2013	2126 Victory	1	\$	2,012
2013	2030 Bedford	1	\$	2,012
2013	2027 Bedford	1	\$	2,012
2013	2100 Victory	1	\$	2,012
2013	2119 Norcrest	1	\$	2,012
2013	2118 Norcrest	1	\$	2,012
2013	2202 Norcrest	1	\$	2,012
2013	2703 Columbus	1	\$	2,012
2013	2207 Norcrest	1	\$	2,012
2013	2311 Norcrest	1	\$	2,012
2013	2314 Norcrest	1	\$	2,012
2013	2212 Norcrest	1	\$	2,012
2013	2124 Canal	1	\$	2,012
2013	2714 Columbus	1	\$	2,012
2013	2715 Columbus	1	\$	2,012
2013	2800 Robert	1	\$	2,012
2013	2301 Cherry	1	\$	2,012
2013	2300 Cherry	1	\$	2,012
2013	2408 Robert	1	\$	2,012
2013	2410 Cherry	1	\$	2,012
2013	2412 Robert	1	\$	2,012
2013	2601 Helen	1	\$	2,012
2013	2600 Helen	1	\$	2,012
2013	2400 Norcrest	1	\$	2,012
2013	2401 Norcrest	1	\$	2,012
2013	2204 Malad	1	\$	2,012
2013	2210 Malad	1	\$	2,012
2013	2588 Columbus	1	\$	2,012
2013	2518 Columbus	1	\$	2,012
2013	2602 Columbus	1	\$	2,012
2013	2608 Columbus	1	\$	2,012
2013	1918 Suncrest	1	\$	2,012
2013	2004 Suncrest	1	\$	2,012
2013	1803 Suncrest	1	\$	2,012
2013	2603 Annette	1	\$	2,012
2013	2200 Cherry	1	\$	2,012
2013	2201 Cherry	1	\$	2,012
2013	1610 Victory	1	\$	2,012
2013	1503 27th	1	\$	2,012
2013	1502 27th	1	\$	2,012
2013	505 Logan	1	\$	2,012

2013	411 Logan	1	\$	2,012
2013	1607 Canal	1	\$	2,012
2013	1608 Canal	1	\$	2,012
2013	1607 Bedford	1	\$	2,012
2013	1608 Bedford	1	\$	2,012
2013	1333 N Nichole	1	\$	2,012
2013	200 S Latah	1	\$	2,012
2013	225 16th	2	\$	4,024
2013	1700 20th	2	\$	4,024
2013	1318 20th	2	\$	4,024
2013	1220 20th	2	\$	4,024
2013	1501 19th	2	\$	4,024
2013	Haz SW Contract	2	\$	4,024
2013	Haz SW Contract	1	\$	2,012
2013	Dennis Merideth	1	\$	2,012
2013	FIVE MILE / OVERLAND	2	\$	4,024
2013	50th St - Chin/Green	2	\$	4,024
2013	50th St - Chin/Green	2	\$	4,024
2013	50th St - Chin/Green	2	\$	4,024
2013	50th St - Chin/Green	2	\$	4,024
2013	50th St - Chin/Green	2	\$	4,024
2013	EAGLE RD, SH44-PLAZA	2	\$	4,024
2013	EAGLE RD, SH44-PLAZA	2	\$	4,024
2013	OVERLAND @ VINNELL	2	\$	4,024
2013	OVERLAND @ VINNELL	1	\$	2,012
2013	PIERCE PK-STATE-HILL	1	\$	2,012
2013	PIERCE PK-STATE-HILL	1	\$	2,012
2013	PIERCE PK-STATE-HILL	1	\$	2,012
2013	PIERCE PK-STATE-HILL	1	\$	2,012
2013	PIERCE PK-STATE-HILL	1	\$	2,012
2013	PIERCE PK-STATE-HILL	1	\$	2,012
2013	PIERCE PK-STATE-HILL	1	\$	2,012
2013	PIERCE PK-STATE-HILL	1	\$	2,012
2013	PIERCE PK-STATE-HILL	2	\$	4,024
2013	PIERCE PK-STATE-HILL	1	\$	2,012
2013	PIERCE PK-STATE-HILL	1	\$	2,012
2013	PIERCE PK-STATE-HILL	1	\$	2,012
2013	PIERCE PK-STATE-HILL	1	\$	2,012
2013	PIERCE PK-STATE-HILL	1	\$	2,012
2013	PIERCE PK-STATE-HILL	1	\$	2,012
2013	PIERCE PK-STATE-HILL	1	\$	2,012
2013	PIERCE PK-STATE-HILL	1	\$	2,012

2013	Boise-Holcomb-Eckert	2	\$	4,024
2013	Boise-Holcomb-Eckert	1	\$	2,012
2013	Boise-Holcomb-Eckert	1	\$	2,012
2013	Boise-Holcomb-Eckert	2	\$	4,024
2013	Boise-Holcomb-Eckert	1	\$	2,012
2013	Boise-Holcomb-Eckert	1	\$	2,012
2013	Boise-Holcomb-Eckert	1	\$	2,012
2013	Boise-Holcomb-Eckert	1	\$	2,012
2013	Boise-Holcomb-Eckert	1	\$	2,012
2013	FRANKLIN-TENMILE-LI*	1	\$	2,012
2013	FRANKLIN-TENMILE-LI*	1	\$	2,012
2013	30TH ST EXT	2	\$	4,024
2013	30TH ST EXT	1	\$	2,012
2013	30TH ST EXT	1	\$	2,012
2013	30TH ST EXT	1	\$	2,012
2013	30TH ST EXT	1	\$	2,012
2013	30TH ST EXT	2	\$	4,024
2013	30TH ST EXT	2	\$	4,024
2013	30TH ST EXT	2	\$	4,024
2013	30TH ST EXT	2	\$	4,024
2013	30TH ST EXT	1	\$	2,012
2013	30TH ST EXT	1	\$	2,012
2013	FAIRVIEW/CLOVERDALE	2	\$	4,024
2013	MERIDIAN RD-PHASE 2	2	\$	4,024
2013	MERIDIAN RD-PHASE 2	2	\$	4,024
2013	MERIDIAN RD-PHASE 2	2	\$	4,024
2013	MERIDIAN RD-PHASE 2	2	\$	4,024
2013	MERIDIAN RD-PHASE 2	2	\$	4,024
2013	MERIDIAN RD-PHASE 2	2	\$	4,024
2013	MERIDIAN RD-PHASE 2	2	\$	4,024
2013	MERIDIAN RD-PHASE 2	2	\$	4,024
2013	MERIDIAN RD-PHASE 2	2	\$	4,024
2013	MERIDIAN RD-PHASE 2	2	\$	4,024
2013	MERIDIAN RD-PHASE 2	2	\$	4,024
2013	MERIDIAN RD-PHASE 2	2	\$	4,024
2013	MERIDIAN RD-PHASE 2	2	\$	4,024
2013	MERIDIAN RD-PHASE 2	2	\$	4,024
2013	MERIDIAN RD-PHASE 2	2	\$	4,024
2013	MERIDIAN RD-PHASE 2	1	\$	2,012
2013	MERIDIAN RD-PHASE 2	2	\$	4,024
2013	MERIDIAN RD-PHASE 2	2	\$	4,024
2013	MERIDIAN RD-PHASE 2	2	\$	4,024

2013	MERIDIAN RD-PHASE 2	2	\$	4,024
2013	MERIDIAN RD-PHASE 2	1	\$	2,012
2013	MERIDIAN RD-PHASE 2	1	\$	2,012
2013	MERIDIAN RD-PHASE 2	2	\$	4,024
2013	MERIDIAN RD-PHASE 2	2	\$	4,024
2013	MERIDIAN RD-PHASE 2	2	\$	4,024
2013	MERIDIAN RD-PHASE 2	2	\$	4,024
2013	MERIDIAN RD-PHASE 2		\$	-
2013	MERIDIAN RD-PHASE 2	1	\$	2,012
2013	2013 LOCAL OVERLAYS*	1	\$	2,012
2013	2013 LOCAL OVERLAYS*	1	\$	2,012
2013	2013 LOCAL OVERLAYS*	1	\$	2,012
2013	2013 LOCAL OVERLAYS*	1	\$	2,012
2013	2013 LOCAL OVERLAYS*	1	\$	2,012
2013	2013 LOCAL OVERLAYS*	1	\$	2,012
2013	2013 LOCAL OVERLAYS*	1	\$	2,012
2013	2013 LOCAL OVERLAYS*	1	\$	2,012
2013	2013 LOCAL OVERLAYS*	1	\$	2,012
2013	2013 LOCAL OVERLAYS*	1	\$	2,012
2013	2013 LOCAL OVERLAYS*	1	\$	2,012
2013	2013 LOCAL OVERLAYS*	1	\$	2,012
2013	2013 LOCAL OVERLAYS*	1	\$	2,012
2013	2013 LOCAL OVERLAYS*	1	\$	2,012
2013	2013 LOCAL OVERLAYS*	1	\$	2,012
2013	2013 LOCAL OVERLAYS*	1	\$	2,012
2013	2013 LOCAL OVERLAYS*	1	\$	2,012
2013	2013 LOCAL OVERLAYS*	1	\$	2,012
2013	2013 LOCAL OVERLAYS*	1	\$	2,012
2013	2013 LOCAL OVERLAYS*	1	\$	2,012
2013	2013 LOCAL OVERLAYS*	1	\$	2,012
2013	2013 LOCAL OVERLAYS*	1	\$	2,012
2013	2013 LOCAL OVERLAYS*	1	\$	2,012
2013	2013 LOCAL OVERLAYS*	1	\$	2,012
2013	2013 LOCAL OVERLAYS*	1	\$	2,012
2013	2013 LOCAL OVERLAYS*	1	\$	2,012
2013	2013 LOCAL OVERLAYS*	2	\$	4,024
2013	2013 LOCAL OVERLAYS*	2	\$	4,024
2013	2013 LOCAL OVERLAYS*	2	\$	4,024
2013	2013 LOCAL OVERLAYS*	2	\$	4,024
2013	2013 LOCAL OVERLAYS*	1	\$	2,012
2013	2013 LOCAL OVERLAYS*	1	\$	2,012
2013	2013 LOCAL OVERLAYS*	2	\$	4,024
2013	2013 LOCAL OVERLAYS	2	\$	4,024
2013	2013 LOCAL OVERLAYS	2	\$	4,024

2013	2013 LOCAL OVERLAYS	2	\$	4,024
2013	2013 LOCAL OVERLAYS	2	\$	4,024
2013	2013 LOCAL OVERLAYS	2	\$	4,024

Appendix C: Map of 2013 Sidewalk/Ramp Projects

