

- NOTES:**
1. THE FOUNDATION SHALL BE LOCATED AS INDICATED ON THE SIGNAL PLAN SHEETS. THE FOUNDATION LOCATION SHALL BE FIELD VERIFIED BY ACHD PRIOR TO FOUNDATION INSTALLATION.
 2. SIGNAL CABINETS SHOULD BE ORIENTED SUCH THAT THE INTERSECTION IS IN FRONT OF A PERSON OPERATING THE CONTROLLER PANEL (I.E., THE CONTROLLER DOOR OPENS AWAY FROM THE INTERSECTION).
 3. A THREE (3) FOOT (MIN.) CONCRETE LANDING PAD FOUR (4) INCHES THICK AND ONE INCH (1") SLOPE FOR DRAINAGE SHOULD BE PLACED IN FRONT OF THE PANEL DOOR FOR CONTROLLER ACCESS. WHERE APPLICABLE, A SIDEWALK CAN SUBSTITUTE FOR THE LANDING PAD REQUIREMENT.
 4. ALL CONDUITS, ELBOWS AND COUPLINGS WITHIN AND PROTRUDING FROM THE FOUNDATION SHALL BE RIGID PVC. THE REMAINING CONDUITS SHALL BE AS SHOWN ON THE PLANS.
 5. MOLDED PLUGS SHALL BE REQUIRED AT BOTH ENDS OF SPARE CONDUITS.
 6. USE DIMENSION "A" FOR THE CABINET FOUNDATION AND PAD WHEN THE SERVICE PEDESTAL IS NOT REQUIRED.
 7. GROUND IN ACCORDANCE WITH N.E.C.
 8. CONDUIT SHALL BE INSTALLED IN SUCH A MANNER AS TO NOT CAUSE MODIFICATION OF THE CABINET.
 9. 6" WIDE ELECTRICAL HAZARD TAPE INSTALLED 1'-0" ABOVE CONDUIT (TYP. FOR ALL CONDUIT).
 10. SEE SIGNAL PLAN FOR NUMBER OF CONDUITS AND CONDUIT ROUTING.
 11. CONTRACTOR SHALL OBTAIN BOLT PATTERN REQUIREMENTS FROM THE ACHD TRAFFIC SIGNAL INSPECTOR.

FOUNDATION SCHEDULE

CABINET TYPE	FOUNDATION TYPE	CABINET ONLY						CABINET AND SERVICE PEDESTALS																
		A	B	C	D	E	HOOPS			VERTICAL RODS			CU. YDS. CONC.		ANCHOR BOLT									
							NO.	SIZE	LIN. FT.	NO.	SIZE	LIN. FT.	FOUNDATION	PAD	NO.	SIZE	LIN. FT.	FOUNDATION	PAD	QNTY.	SIZE			
SIGNAL	M	2'-9"	1'-9"	—	—	1'-0"	3	#4	24'0"	6	#4	13'0"	0.5	0.1	3	#4	38'6"	8	#4	17'4"	1.05	0.2	2	3/4" x 18" x 4"
	P	4'-0.5"	2'-6"	3'-4.5"	1'-6.5"	—	3	#4	35'6"	6	#4	13'0"	1.1	0.1	3	#4	50'0"	8	#4	17'4"	1.90	0.2	4	3/4" x 18" x 4"
ITS	ITS	2'-0"	2'-6"	1'-3"	2'-1"	—	2	#4	19'0"	4	#4	4'8"	0.4	0.1	—	—	—	—	—	—	—	—	4	1/2" x 15" x 2"

ACHD
Traffic Engineering Division

3775 Adams Street Boise, ID 83714
www.achdidaho.org

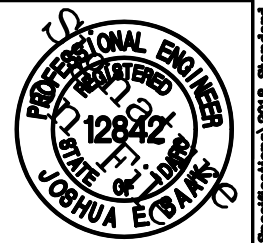
Scale: NTS
Date: 12/15/2008
File: TS-1111.01.DWG

• SIGNATURES •
Drawn By: Joshua Seak
Design By: Joshua Seak
Approved By: Greg Fullerton

• SHEET TITLE •
Standard Cabinet Foundation Detail

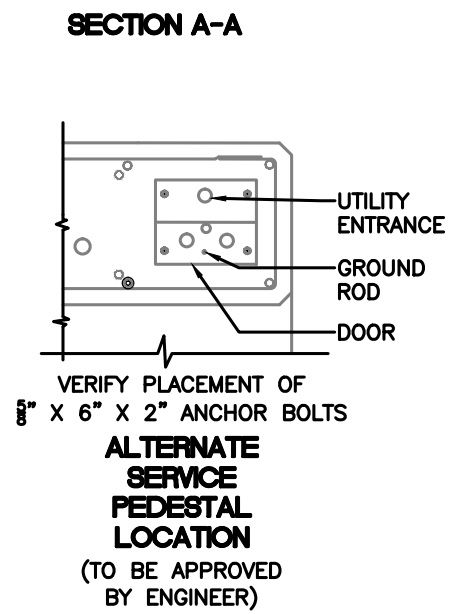
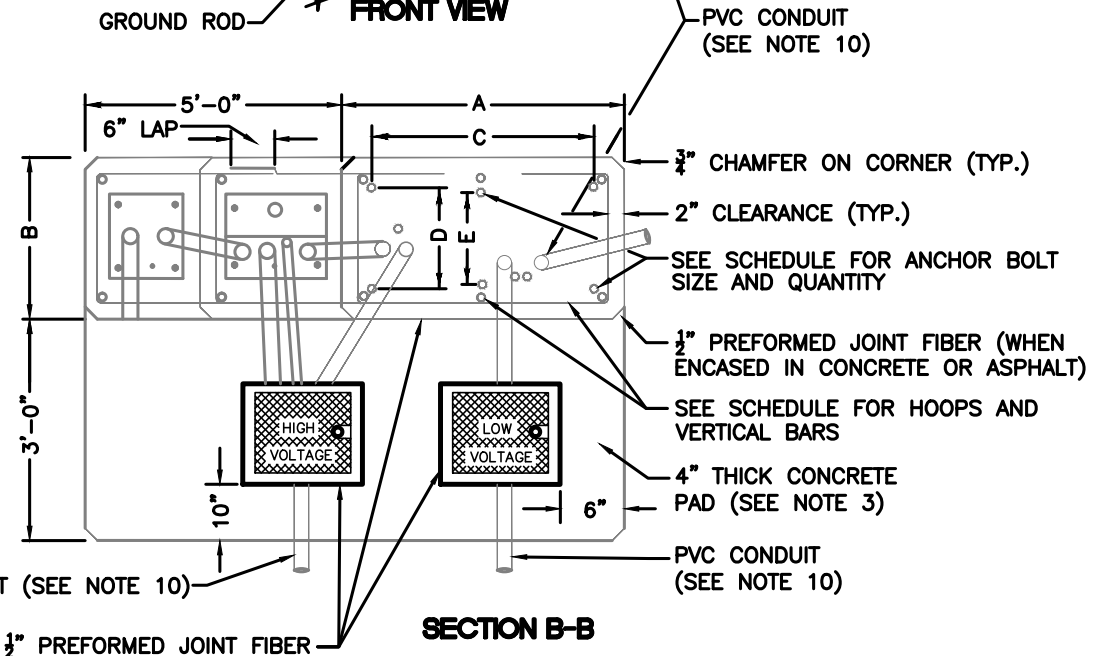
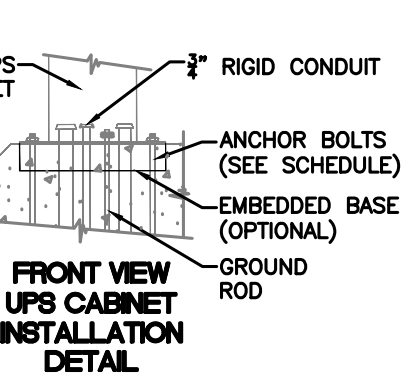
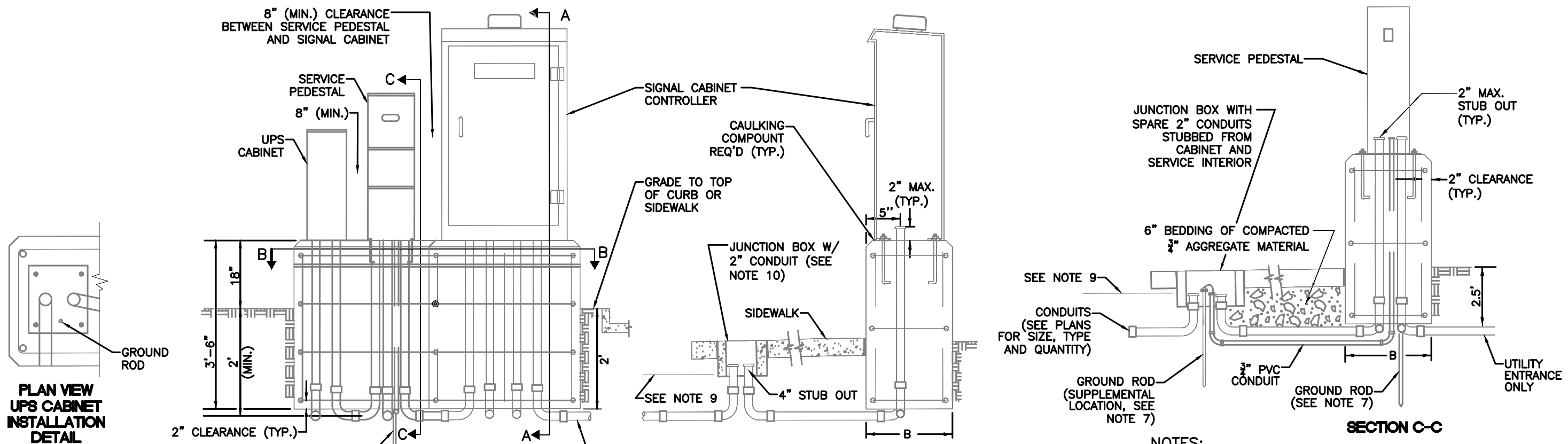
• REVISIONS •

NO.	DATE	BY	DESCRIPTION
12/2008	JES		Added UPS cabinet.



STANDARD DETAIL NO. TS-1111.01

S:\Traffic Specifications\2018 Standard Plans\ts-1111.01.DWG



- NOTES:**
1. THE FOUNDATION SHALL BE LOCATED AS INDICATED ON THE SIGNAL PLAN SHEETS. THE FOUNDATION LOCATION SHALL BE FIELD VERIFIED BY ACHD PRIOR TO FOUNDATION INSTALLATION.
 2. SIGNAL CABINETS SHOULD BE ORIENTED SUCH THAT THE INTERSECTION IS IN FRONT OF A PERSON OPERATING THE CONTROLLER PANEL (I.E., THE CONTROLLER DOOR OPENS AWAY FROM THE INTERSECTION).
 3. A THREE (3) FOOT (MIN.) CONCRETE LANDING PAD FOUR (4) INCHES THICK AND ONE INCH (1") SLOPE FOR DRAINAGE SHOULD BE PLACED IN FRONT OF THE PANEL DOOR FOR CONTROLLER ACCESS. WHERE APPLICABLE, A SIDEWALK CAN SUBSTITUTE FOR THE LANDING PAD REQUIREMENT.
 4. ALL CONDUITS, ELBOWS AND COUPLINGS WITHIN AND PROTRUDING FROM THE FOUNDATION SHALL BE RIGID PVC. THE REMAINING CONDUITS SHALL BE AS SHOWN ON THE PLANS.
 5. MOLDED PLUGS SHALL BE REQUIRED AT BOTH ENDS OF SPARE CONDUITS.
 6. USE DIMENSION "A" FOR THE CABINET FOUNDATION AND PAD WHEN THE SERVICE PEDESTAL IS NOT REQUIRED.
 7. GROUND IN ACCORDANCE WITH N.E.C.
 8. CONDUIT SHALL BE INSTALLED IN SUCH A MANNER AS TO NOT CAUSE MODIFICATION OF THE CABINET.
 9. 6" WIDE ELECTRICAL HAZARD TAPE INSTALLED 1'-0" ABOVE CONDUIT (TYP. FOR ALL CONDUIT PLACED IN THE GROUND).
 10. SEE SIGNAL PLAN FOR NUMBER OF CONDUITS AND CONDUIT ROUTING.
 11. CONTRACTOR SHALL OBTAIN BOLT PATTERN REQUIREMENTS FROM THE ACHD TRAFFIC SIGNAL INSPECTOR.

TYPE P (MODIFIED) FOUNDATION SCHEDULE																
CABINET TYPE	FOUNDATION TYPE	A	B	C	D	E	CABINET AND SERVICE PEDESTALS									
							HOOPS		VERTICAL RODS		CY CONC.		ANCHOR BOLT			
							NO.	SIZE	LIN. FT.	NO.	SIZE	LIN. FT.	FOUNDATION	PAD	QNTY.	SIZE
SIGNAL	P (MOD)	4'-2"	2'-5"	3'-4.75"	1'-6.5"	--	4	#4	90'0"	10	#4	31'-8"	2.8	0.3	4	0.75"x18"x2.25"

Traffic Engineering Division		
3775 Adams Street Boise, ID 83714 www.achdidaho.org		

NO.	DATE	BY	DESCRIPTION
• REVISIONS •			

• SIGNATURES •

Scale: NTS	Drawn By: Joshua Saak
Date: 2/13/2019	Design By: Joshua Saak
File: TS-1111.02.DWG	Approved By: Greg Fullerton

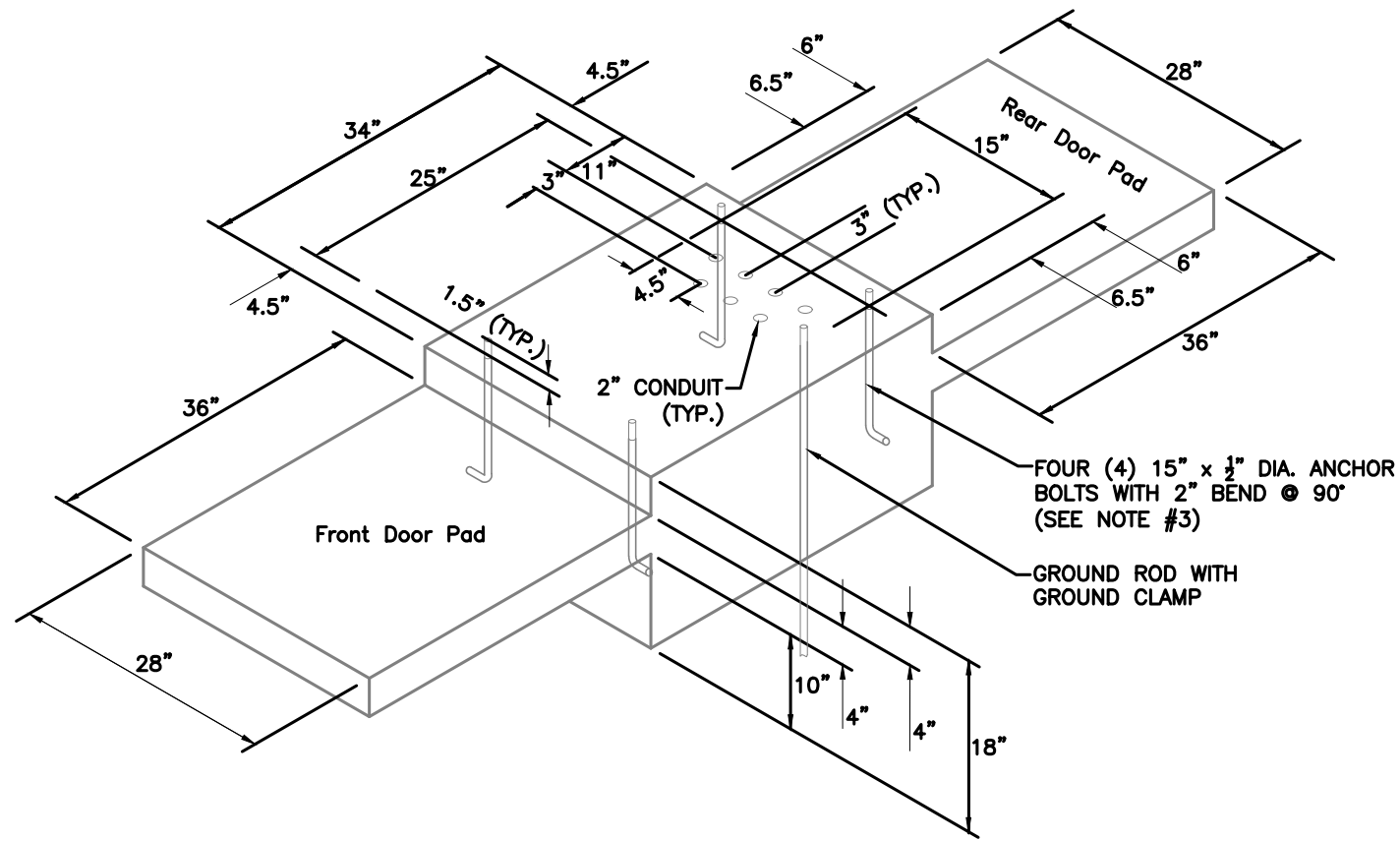
• SHEET TITLE •

Standard Cabinet
Foundation Detail with UPS

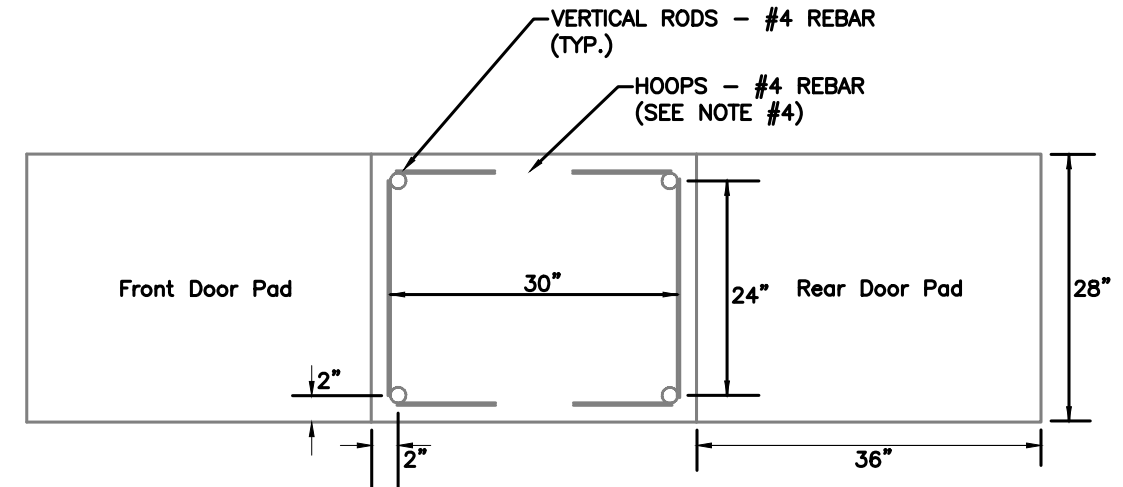
• STANDARD DETAIL NO. •
 TS-1111.02

NOTES:

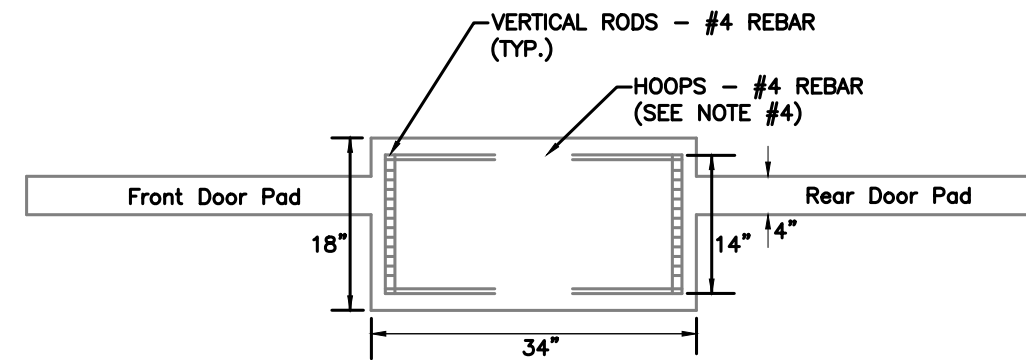
1. INSTALL GROUND ROD WIRE CONDUIT IN ALL CABINET FOUNDATIONS. GROUND ROD WIRE CONDUIT SHALL BE USED WHEN AN ADDITIONAL GROUND ROD IS REQUIRED.
2. BONDING AND GROUNDING SHALL MEET THE NATIONAL ELECTRIC CODE AND ACHD STANDARDS.
3. VENDOR WILL PROVIDE DMS CABINET.
4. STEEL REBAR REINFORCEMENT SHALL HAVE 6" OF OVERLAP FOR EACH HOOP.
5. ANCHOR BOLTS, CONDUITS AND GROUND ROD ARE NOT SHOWN IN TOP OR SIDE VIEWS FOR CLARITY OF REINFORCING DETAILS.



**FOUNDATION DETAIL
FOR ITS (MODEL 334) CABINET**



TOP VIEW - REINFORCING DETAIL



SIDE VIEW - REINFORCING DETAIL

NO.	DATE	BY	DESCRIPTION
8/15	JES		Added reinforcement details.
4/14	JES		Minor dimension modifications.
• REVISIONS •			

ACHD
Traffic Engineering Division
3775 Adams Street Boise, ID 83714
www.achdidaho.org

• SIGNATURES •	
Scale: NTS	Drawn By: Joshua Seak
Date: 12/29/2011	Design By: Joshua Seak
File: TS-1111.03.DWG	Approved By: Greg Fullerton

• SHEET TITLE •	
Standard ITS Cabinet Foundation Detail	

PROFESSIONAL ENGINEER
REGISTERED
12842
STATE OF IDAHO
JOSHUA E. BANKS

• STANDARD DETAIL NO. •
TS-1111.03