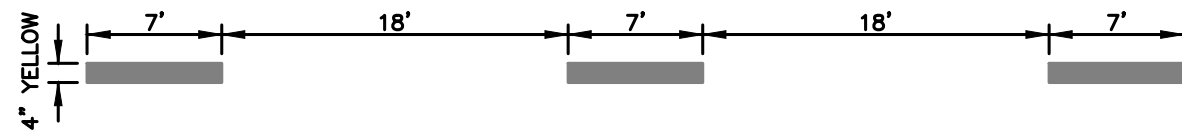
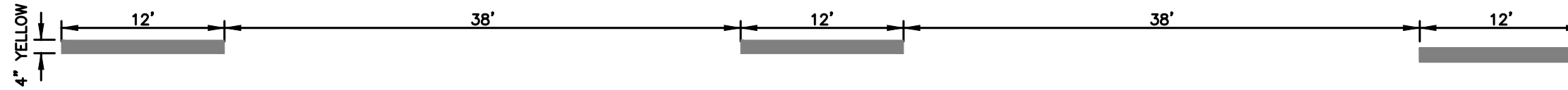


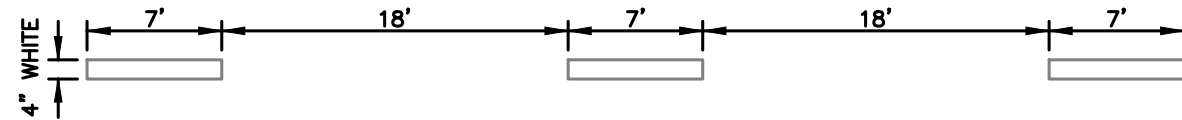
1 Center Line, Posted Speed \leq 40 mph



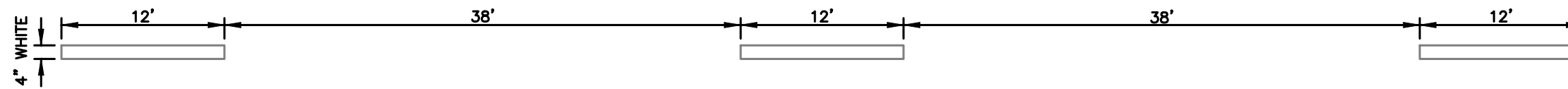
2 Center Line, Posted Speed $>$ 45 mph



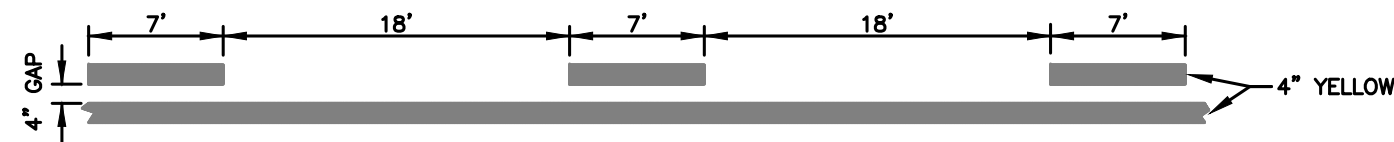
3 Lane Line, Posted Speed \leq 40 mph



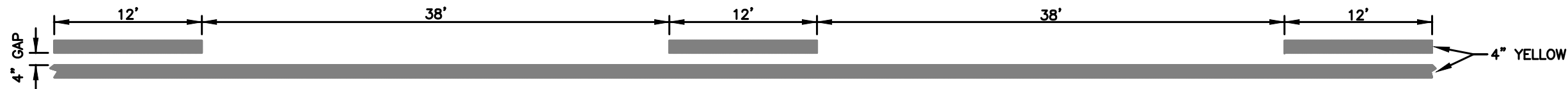
4 Lane Line, Posted Speed $>$ 45 mph



5 Center Line, No Passing Zone, One Direction, Posted Speed \leq 40 mph



6 Center Line, No Passing Zone, One Direction, Posted Speed $>$ 45 mph



NOTES:

1. BASIC COLOR RULE: WHITE LINES SEPARATE TRAFFIC IN THE SAME DIRECTION; YELLOW LINES SEPARATE TRAFFIC IN OPPOSING DIRECTIONS.
2. BLACK MARKINGS MAY BE USED IN COMBINATION WITH WHITE MARKINGS FOR BROKEN LINES WHERE A LIGHT COLORED PAVEMENT DOES NOT PROVIDE SUFFICIENT CONTRAST.

NO.	DATE	BY	DESCRIPTION
• REVISIONS •			

ACHD
Traffic Engineering Division
3775 Adams Street Boise, ID 83714
www.achdidaho.org

• SIGNATURES •	
Scale: NTS	Drawn By: Joshua Seak
Date: 12/1/2014	Design By: Joshua Seak
File: TS-1112.01.DWG	Approved By: Shawn Martin

• SHEET TITLE •
Standard Traffic Stripe Details

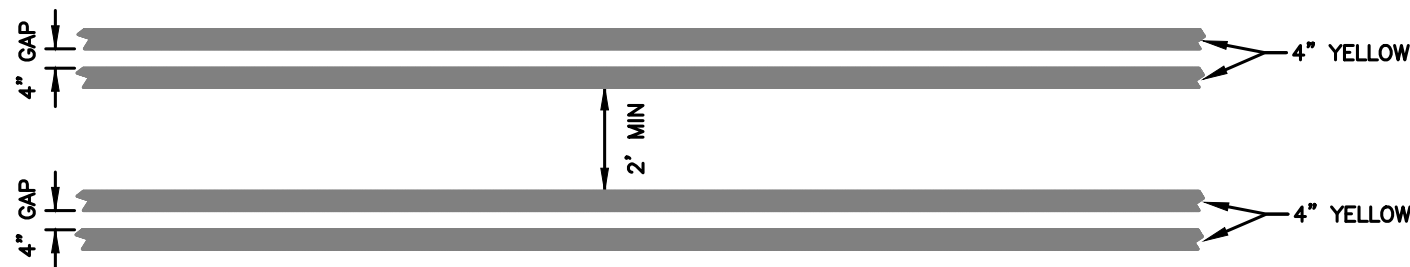
PROFESSIONAL ENGINEER
REGISTERED
12842
STATE OF IDAHO
JOSHUA SEAK

• STANDARD DETAIL NO. •
TS-1112.01

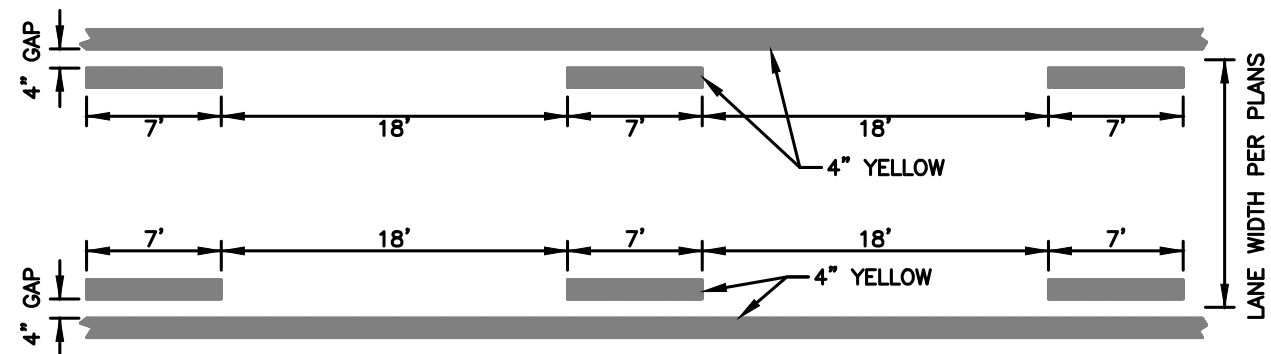
7 Center Line, No Passing Zone, Two Directions



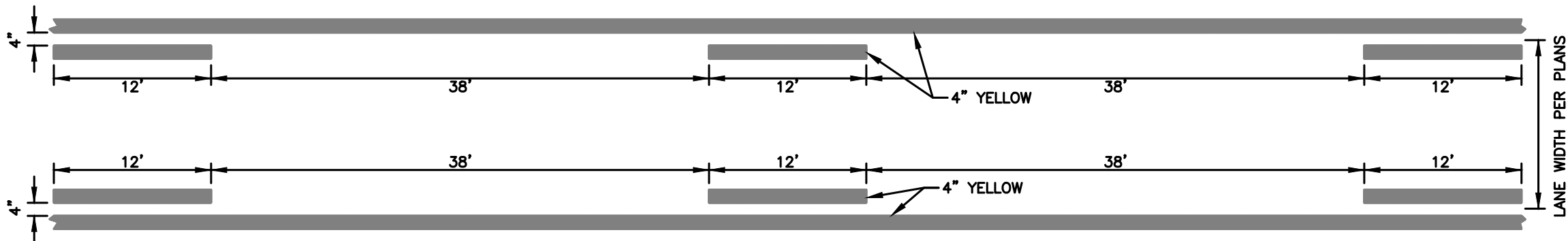
8 Striped Median Island



9 Two-Way Left Turn Lane, Posted Speed <= 40 mph




10 Two-Way Left Turn Lane, Posted Speed >= 45 mph



NOTES:

1. BASIC COLOR RULE: WHITE LINES SEPARATE TRAFFIC IN THE SAME DIRECTION; YELLOW LINES SEPARATE TRAFFIC IN OPPOSING DIRECTIONS.
2. BLACK MARKINGS MAY BE USED IN COMBINATION WITH WHITE MARKINGS FOR BROKEN LINES WHERE A LIGHT COLORED PAVEMENT DOES NOT PROVIDE SUFFICIENT CONTRAST.

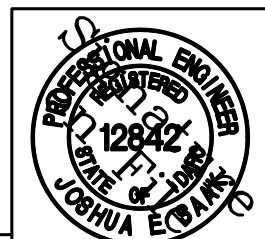
NO.	DATE	BY	DESCRIPTION
• REVISIONS •			



ACHD
Traffic Engineering Division
3775 Adams Street Boise, ID 83714
www.achdidaho.org

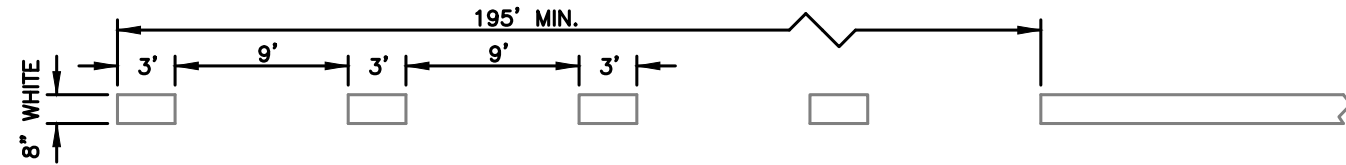
• SIGNATURES •	
Scale: NTS	Drawn By: Joshua Seak
Date: 12/1/2014	Design By: Joshua Seak
File: T8-1112.02.DWG	Approved By: Shawn Martin

• SHEET TITLE •
Standard Traffic Stripe Details

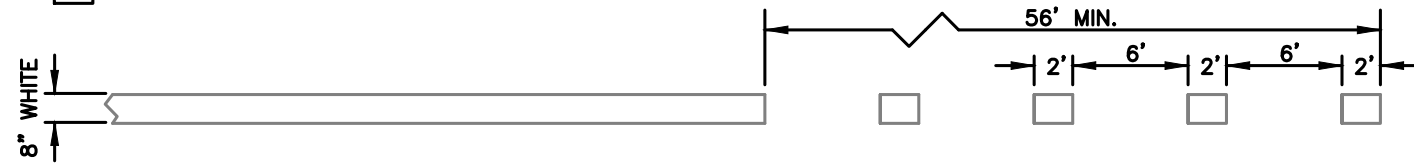


• STANDARD DETAIL NO. •
TS-1112.02

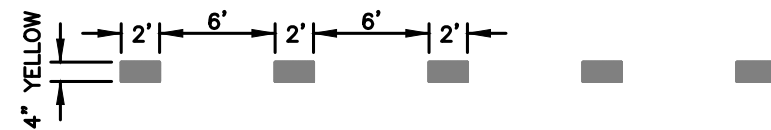
11 Mandatory Lane Drop ("Elephant Tracking")



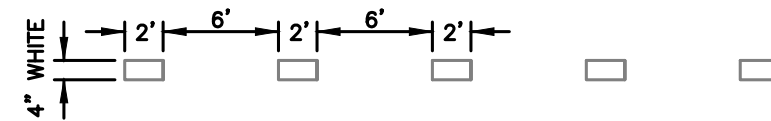
12 Bike Lane at Intersection



13 Lane Line Extension Through Intersection ("Yellow Cat Track")



14 Lane Line Extension Through Intersection ("White Cat Track")



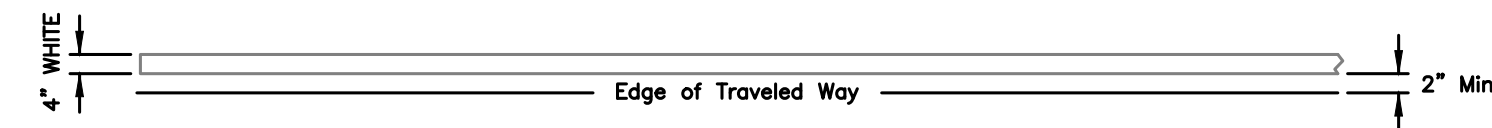
15 Channelizing Line/Bike Lane Line



16 Left Edgeline for Divided Roadway or Multiuse Pathway (MUP) Centerline



17 Right Edgeline



NOTES:

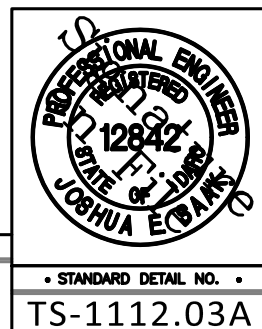
1. BASIC COLOR RULE: WHITE LINES SEPARATE TRAFFIC IN THE SAME DIRECTION; YELLOW LINES SEPARATE TRAFFIC IN OPPOSING DIRECTIONS.
2. BLACK MARKINGS MAY BE USED IN COMBINATION WITH WHITE MARKINGS FOR BROKEN LINES WHERE A LIGHT COLORED PAVEMENT DOES NOT PROVIDE SUFFICIENT CONTRAST.

NO.	DATE	BY	DESCRIPTION
• REVISIONS •			



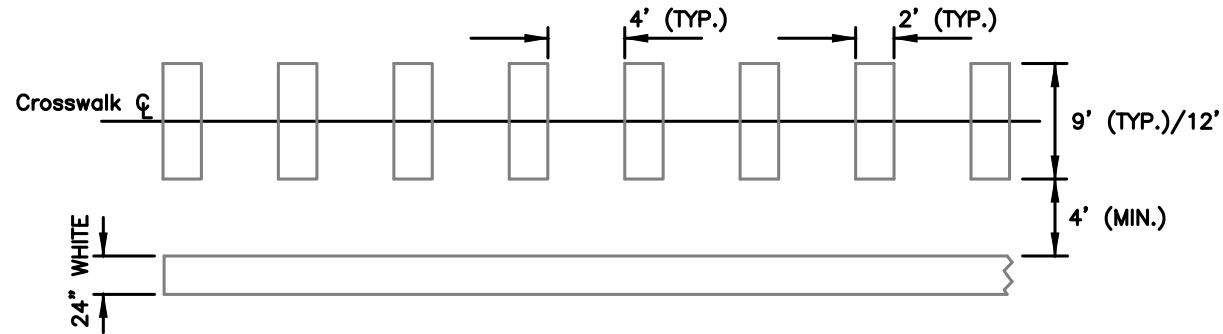
• SIGNATURES •	
Scale: NTS	Drawn By: Joshua Seak
Date: 12/1/2014	Design By: Joshua Seak
File: TS-1112.03A.DWG	Approved By: Shawn Martin

• SHEET TITLE •	
Standard Traffic Stripe Details	



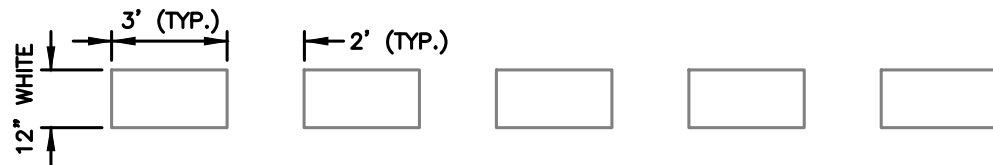
18 Crosswalk

NOTE: CENTER CROSSWALK ALONG THE CENTERLINE OF THE PEDESTRIAN RAMPS - BARS ARE INSTALLED PARALLEL TO THE DIRECTION OF TRAVEL.

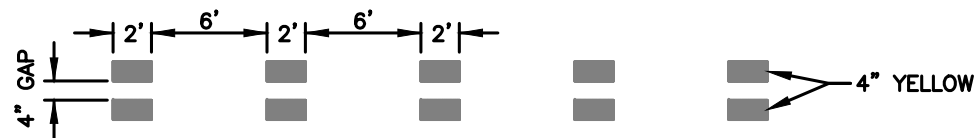


19 Stop Bar

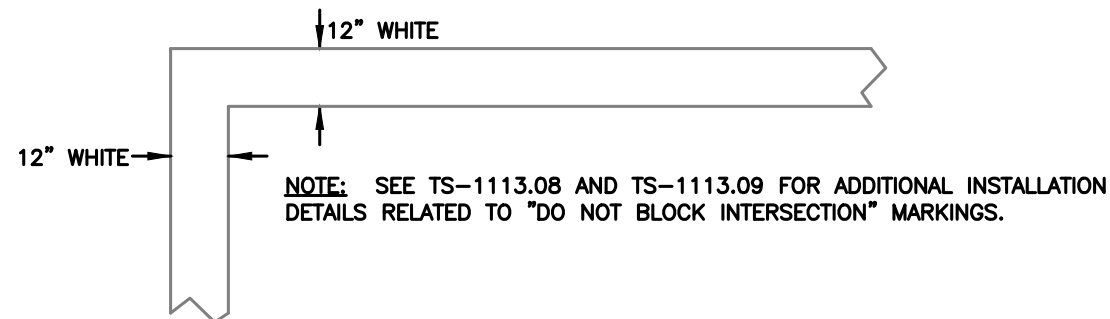
20 Roundabout Entry Marking



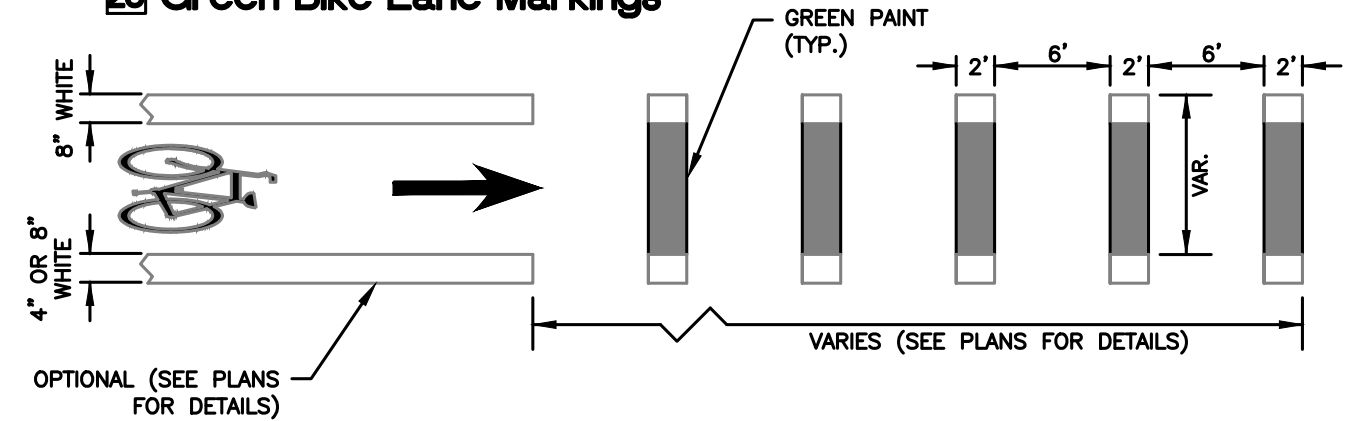
21 Lane Line Extension Through Intersection ('Double Yellow Cat Track')



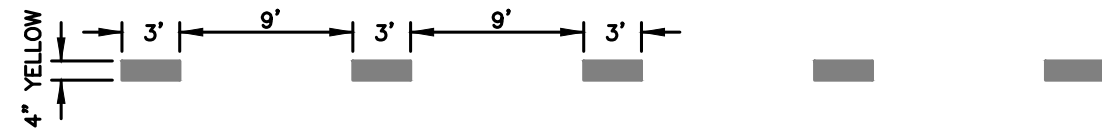
22 'Do Not Block Intersection' Markings



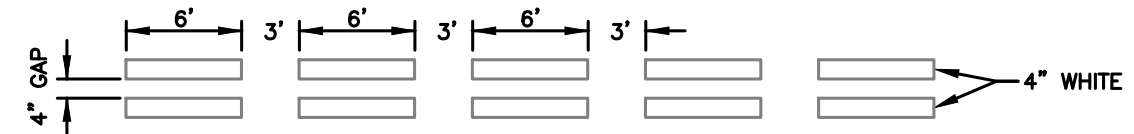
23 Green Bike Lane Markings



24 Multiuse Pathway Center Line



25 Lane Line Extension Within Roundabout ('Double White Cat Track')



NOTES:

1. BASIC COLOR RULE: WHITE LINES SEPARATE TRAFFIC IN THE SAME DIRECTION; YELLOW LINES SEPARATE TRAFFIC IN OPPOSING DIRECTIONS.
2. BLACK MARKINGS MAY BE USED IN COMBINATION WITH WHITE MARKINGS FOR BROKEN LINES WHERE A LIGHT COLORED PAVEMENT DOES NOT PROVIDE SUFFICIENT CONTRAST.

NO.	DATE	BY	DESCRIPTION
3/2024	JES		Added detail 25; modified detail 20
12/2021	JES		Added multiuse pathway centerline detail
11/2021	JES		Added green bike lane detail

ACHD
Traffic Engineering Division
3775 Adams Street Boise, ID 83714
www.achdidaho.org

• SIGNATURES •	
Scale: NTS	Drawn By: Joshua Saak
Date: 12/9/2021	Design By: Joshua Saak
File: TS-1112.03B.DWG	Approved By: Shawn Martin

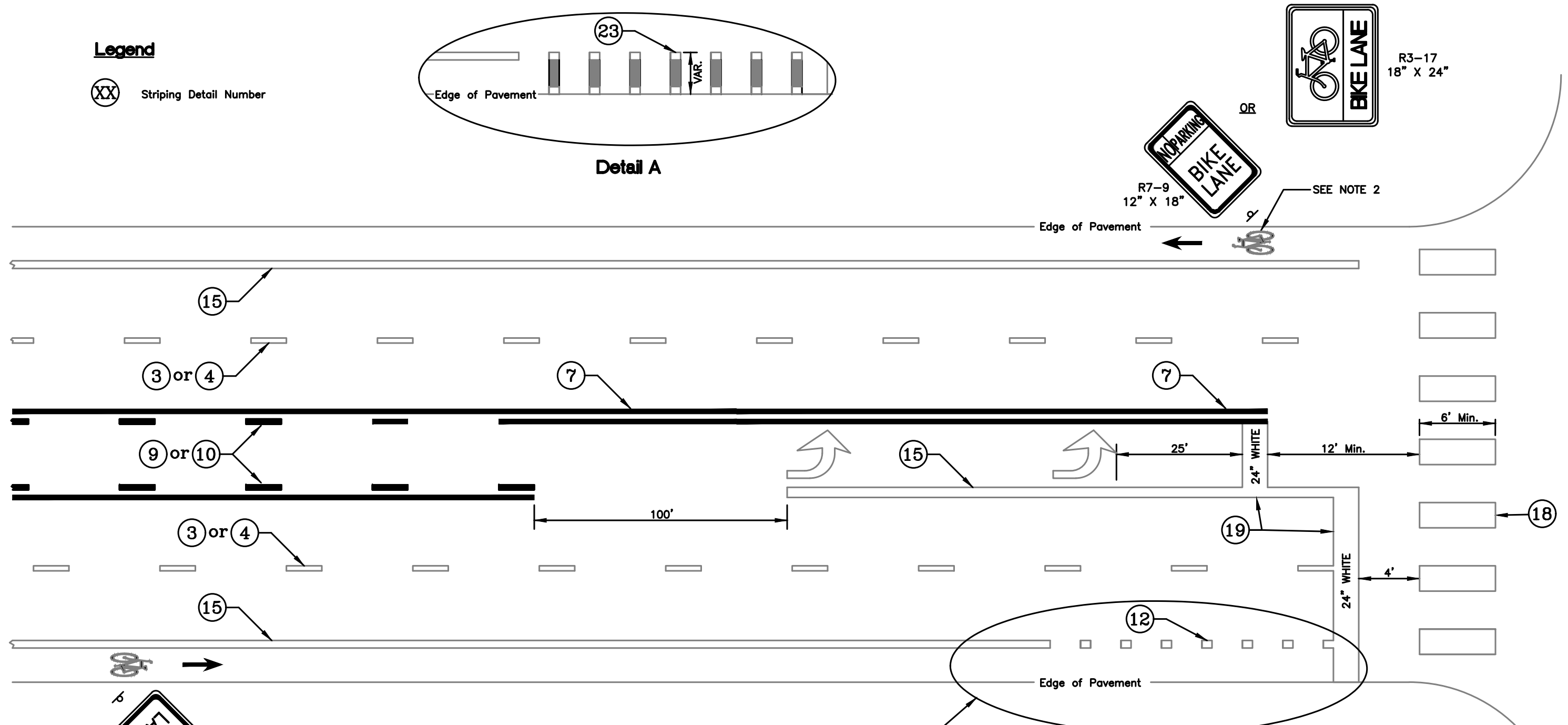
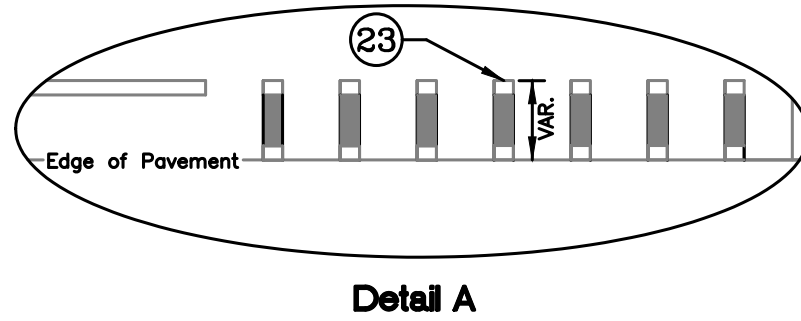
• SHEET TITLE •
Standard Traffic Stripe Details

PROFESSIONAL ENGINEER
REGISTERED
12842
STATE OF IDAHO
JOSHUA E. BANKS

• STANDARD DETAIL NO. •
TS-1112.03B

Legend

(XX) Striping Detail Number



SEE DETAIL A FOR OPTIONAL BIKE LANE STRIPING DETAIL

Typical Intersection Leg

NOTES:

1. SEE ACHD STANDARD DETAILS TS-1113 FOR STANDARD LANE USE PAVEMENT MARKING DETAILS.
2. BIKE LANE SYMBOL SHALL BE PLACED IMMEDIATELY AFTER AN INTERSECTION AND THEN APPROXIMATELY EVERY 500 FEET.
3. BIKE LANE SIGNS MAY BE REQUIRED AT THE DISCRETION OF THE ENGINEER. R7-9 SIGNS SHALL BE MOUNTED AT A 45 DEGREE ANGLE TO THE ROADWAY. R3-17 SIGNS, INSTALLED AFTER MAJOR INTERSECTIONS, SHALL BE MOUNTED PERPENDICULAR TO THE ROADWAY.

NO.	DATE	BY	DESCRIPTION
1	12/2016	JES	Added green bike lane option

• REVISIONS •

ACHD
Traffic Engineering Division

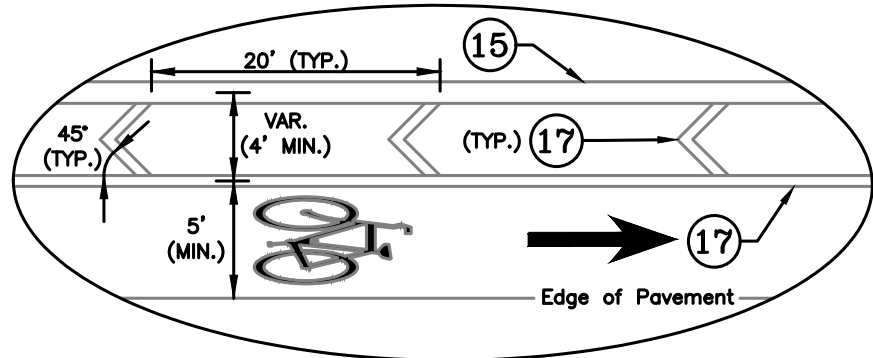
• SIGNATURES •	
Scale: NTS	Drawn By: Joshua Seak
Date: 4/18/2008	Design By: Joshua Seak
File: TS-1112.04.DWG	Approved By: Shawn Martin

• SHEET TITLE •
Standard Traffic Stripe Details - Typical Intersection Leg

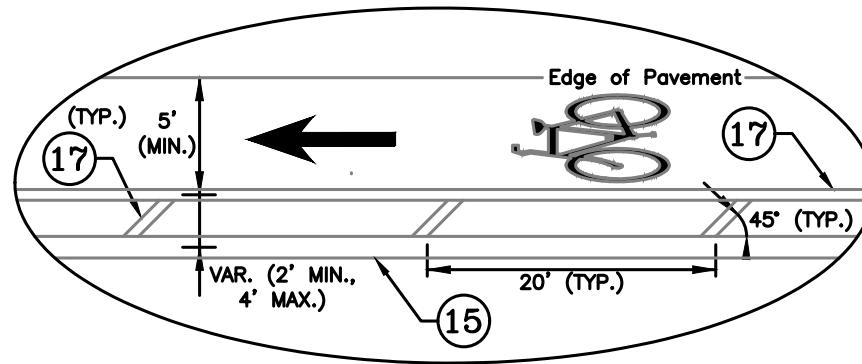
PROFESSIONAL ENGINEER
REGISTERED
12842
STATE OF IDAHO
JOSHUA SEAK

• STANDARD DETAIL NO. •
TS-1112.04

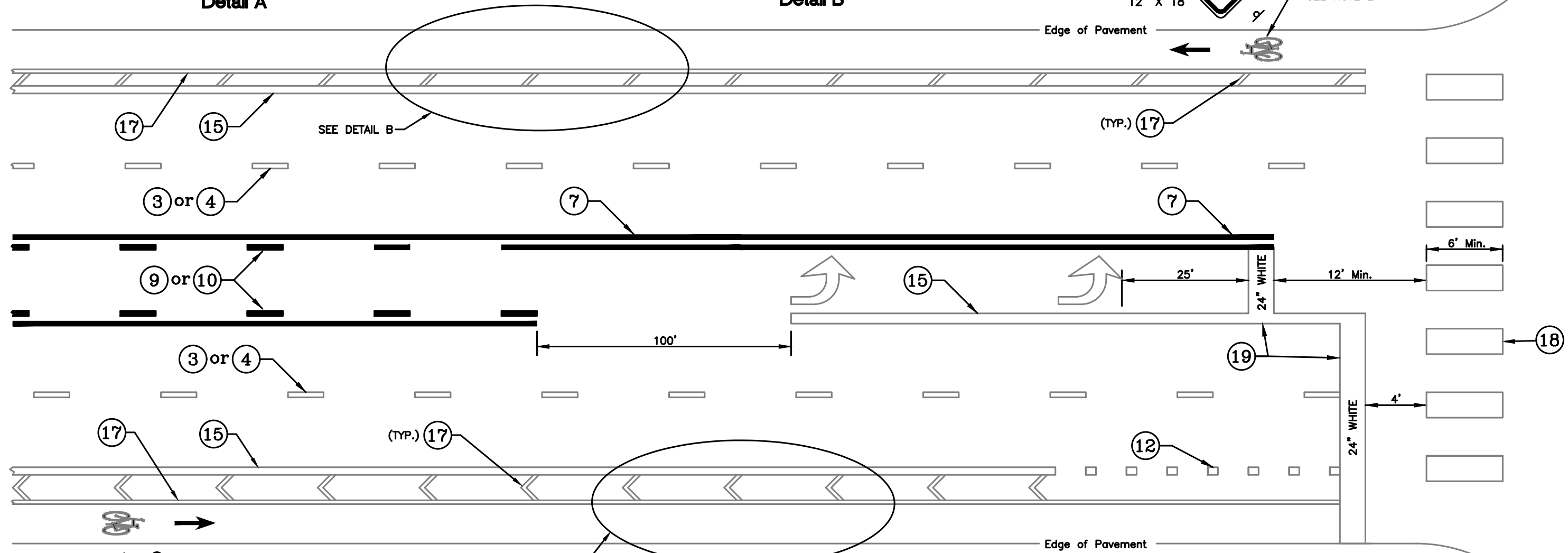
s:\Traffic Specifications\2008 Standard Plans\ts-1112.04.DWG



Detail A



Detail B



Typical Intersection Leg with Buffered Bike Lanes

Legend

(XX) Striping Detail Number

NOTES:

- SEE ACHD STANDARD DETAILS TS-1113 FOR STANDARD LANE USE PAVEMENT MARKING DETAILS.
- BIKE LANE SYMBOL SHALL BE PLACED IMMEDIATELY AFTER AN INTERSECTION AND THEN APPROXIMATELY EVERY 500 FEET.
- BIKE LANE SIGNS MAY BE REQUIRED AT THE DISCRETION OF THE ENGINEER. R7-9 SIGNS SHALL BE MOUNTED AT A 45 DEGREE ANGLE TO THE ROADWAY. R3-17 SIGNS, INSTALLED AFTER MAJOR INTERSECTIONS, SHALL BE MOUNTED PERPENDICULAR TO THE ROADWAY.
- FOR BIKE LANE BUFFERS, USE CHEVRON MARKINGS FOR WIDTHS FOUR (4) FEET AND GREATER. USE HATCH MARKS POINTED UP AND TO THE LEFT (AS VIEWED BY SAME DIRECTION TRAFFIC) FOR BUFFER WIDTHS GREATER THAN TWO (2) FEET AND LESS THAN FOUR (4) FEET. BUFFER WIDTHS LESS THAN TWO (2) FEET SHOULD NOT BE INSTALLED.

NO.	DATE	BY	DESCRIPTION
• REVISIONS •			

ACHD
Traffic Engineering Division
3775 Adams Street Boise, ID 83714
www.achdidaho.org

• SIGNATURES •	
Scale: NTS	Drawn By: Joshua Seak
Date: 12/8/2016	Design By: Joshua Seak
File: TS-1112.06.DWG	Approved By: Colby GeDeros

• SHEET TITLE •
Standard Traffic Stripe Details - Buffered Bike Lanes

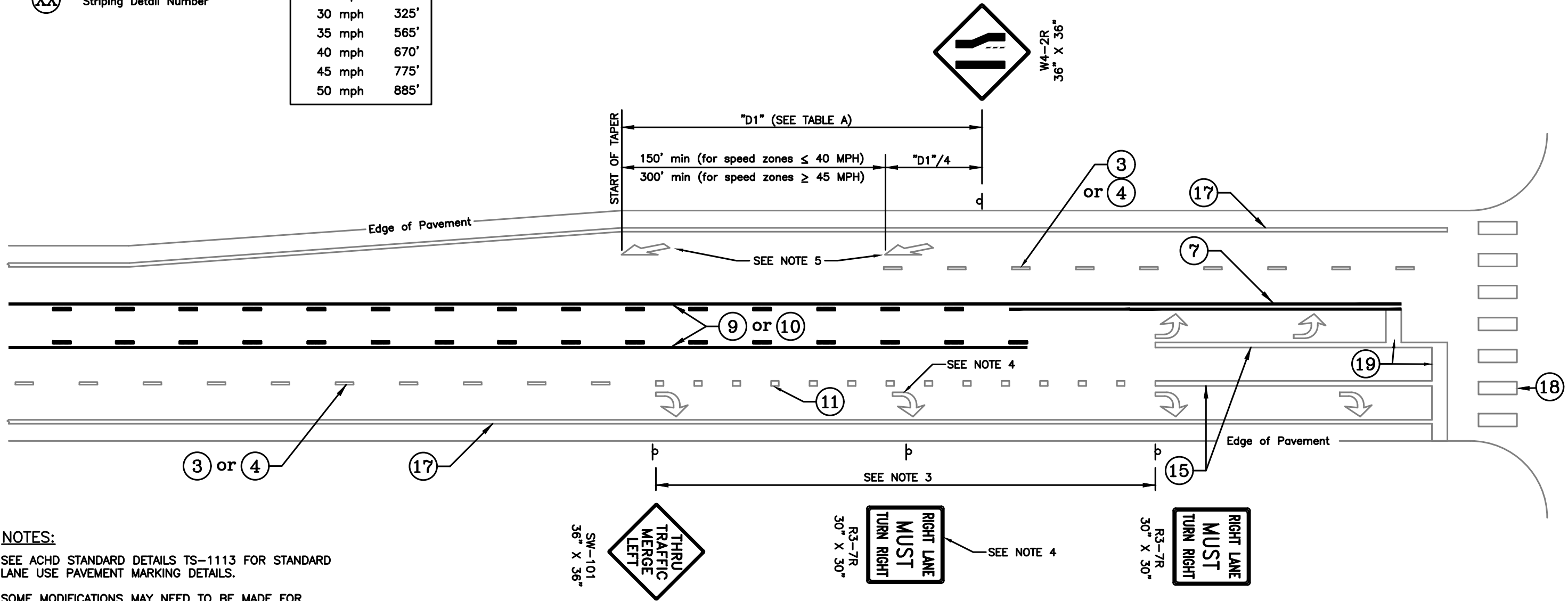
PROFESSIONAL ENGINEER
REGISTERED
12842
STATE OF IDAHO
JOSHUA E. SEAK

• STANDARD DETAIL NO. •
TS-1112.05

Legend

(XX) Striping Detail Number

Roadway Speed Limit	"D1"
25 mph	225'
30 mph	325'
35 mph	565'
40 mph	670'
45 mph	775'
50 mph	885'



NOTES:

- SEE ACHD STANDARD DETAILS TS-1113 FOR STANDARD LANE USE PAVEMENT MARKING DETAILS.
- SOME MODIFICATIONS MAY NEED TO BE MADE FOR ROADWAYS WITH BIKE LANES.
- ADVANCE PLACEMENT OF WARNING SIGNS SHALL BE BASED ON THE CURRENT ADOPTED EDITION OF THE MUTCD.
- ADDITIONAL RIGHT TURN ARROWS AND R3-7R SIGNS MAY BE INSTALLED WITHIN THE TRAP LANE. REFER TO PLAN SHEETS FOR DETAILS.
- A MINIMUM OF TWO MERGE ARROWS SHALL BE REQUIRED FOR A DROP LANE CONDITION. ADDITIONAL ARROWS MAY BE INSTALLED FOR HIGHER SPEED ROADWAYS. REFER TO PLAN SHEETS FOR DETAILS.

**Typical Drop/Trap Lane
Signing and Striping**

Traffic Engineering Division	
3775 Adams Street Boise, ID 83714 www.achdidaho.org	

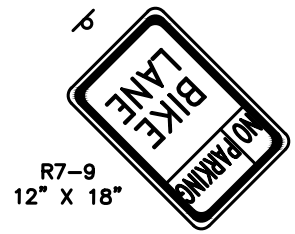
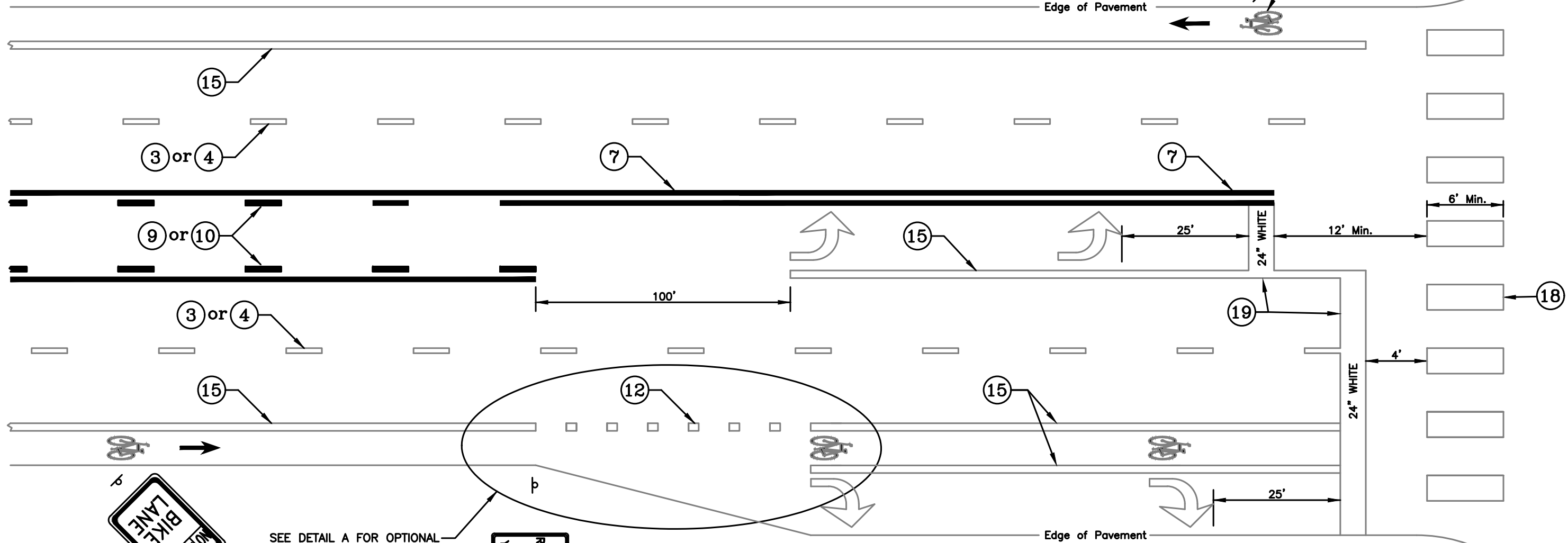
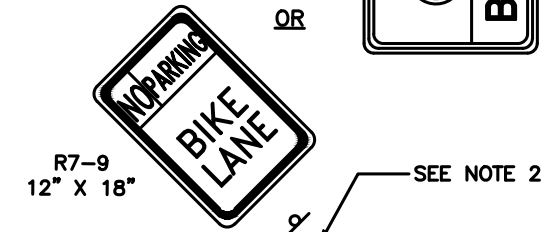
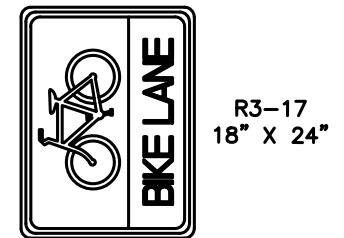
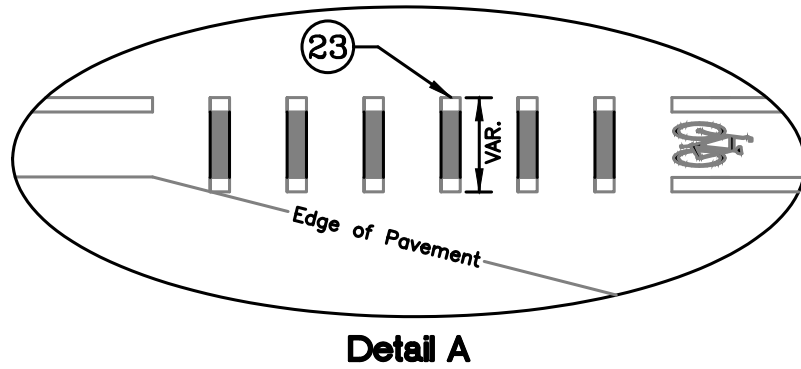
• SIGNATURES •	
Scale: NTS	Drawn By: Joshua Seak
Date: 5/4/1999	Design By: Joshua Seak
File: TS-1112.06.DWG	Approved By: Colby GeDeros

• SHEET TITLE •	
Standard Traffic Stripe Details -	
Typical Drop/Trap Lane	

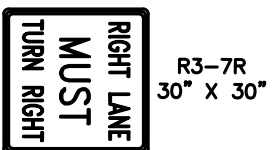
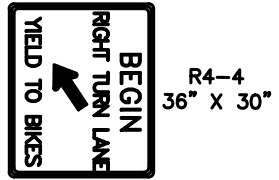
• STANDARD DETAIL NO. •
TS-1112.06

Legend

(XX) Striping Detail Number



SEE DETAIL A FOR OPTIONAL BIKE LANE STRIPING DETAIL



NOTES:

1. SEE ACHD STANDARD DETAILS TS-1113 FOR STANDARD LANE USE PAVEMENT MARKING DETAILS.
2. BIKE LANE SYMBOLS SHALL BE PLACED IMMEDIATELY AFTER AN INTERSECTION AND THEN APPROXIMATELY EVERY 500 FEET.
3. BIKE LANE SIGNS MAY BE REQUIRED AT THE DISCRETION OF THE ENGINEER. R7-9 SIGNS SHALL BE MOUNTED AT A 45 DEGREE ANGLE TO THE ROADWAY. R3-17 SIGNS, INSTALLED AFTER MAJOR INTERSECTIONS, SHALL BE MOUNTED PERPENDICULAR TO THE ROADWAY.
4. ADD SUPPLEMENTAL RIGHT AND LEFT TURN ARROWS IF TURN BAY LENGTHS EXCEED 200'.

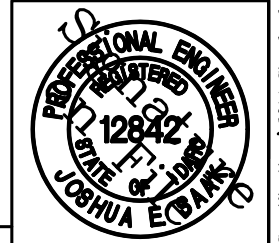
Typical Intersection Leg With Bike Lane and Right Turn Lane

NO.	DATE	BY	DESCRIPTION
12/16	JES		Added green bike lane option
07/10	JES		Various changes.

• REVISIONS •



• SIGNATURES •		• SHEET TITLE •	
Scale: NTS	Drawn By: Joshua Seak	Standard Traffic Stripe Details - Typical Intersection W/Right Turn Lane and Bike Lane	
Date: 4/18/2008	Design By: Joshua Seak		
File: TS-1112.07.DWG	Approved By: Colby Gederros		



STANDARD DETAIL NO. TS-1112.07

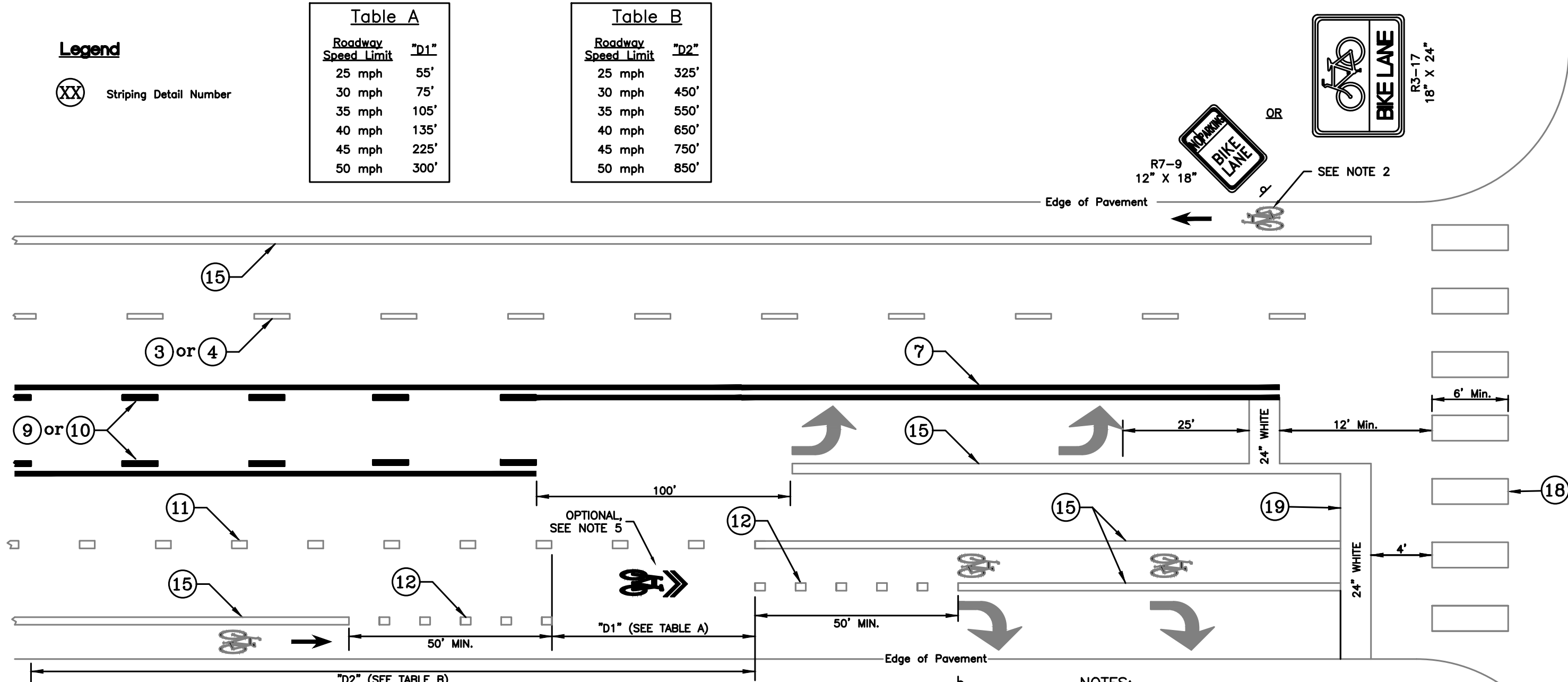
s:\Traffic Specifications\2014 Standard Plans\ts-1112.07.DWG

Legend

(XX) Striping Detail Number

Roadway Speed Limit	"D1"
25 mph	55'
30 mph	75'
35 mph	105'
40 mph	135'
45 mph	225'
50 mph	300'

Roadway Speed Limit	"D2"
25 mph	325'
30 mph	450'
35 mph	550'
40 mph	650'
45 mph	750'
50 mph	850'



NOTES:

- SEE ACHD STANDARD DETAIL TS-1113 FOR STANDARD LANE USE PAVEMENT MARKING DETAILS.
- BIKE LANE SYMBOL SHALL BE PLACED IMMEDIATELY AFTER AN INTERSECTION AND THEN APPROXIMATELY EVERY 500 FEET.
- BIKE LANE SIGNS MAY BE REQUIRED AT THE DISCRETION OF THE ENGINEER. IF INSTALLED, R7-9 SIGNS SHALL BE MOUNTED AT A 45 DEGREE ANGLE TO THE ROADWAY. R3-17 SIGNS, INSTALLED AFTER MAJOR INTERSECTIONS, SHALL BE MOUNTED PERPENDICULAR TO THE ROADWAY.
- MINIMUM ADVANCE PLACEMENT DISTANCE (D2) OF WARNING SIGNS SHALL BE BASED ON THE CURRENT ADOPTED EDITION OF THE MUTCD.
- SHARED LANE MARKINGS MAY BE INSTALLED TO ASSIST BICYCLISTS WITH LANE POSITIONING IF THE POSTED SPEED LIMIT IS 35 MPH OR LOWER. MORE THAN ONE MARKING MAY BE INSTALLED.

Typical Intersection Leg With Right Turn Drop Lane and Bike Lane

NO.	DATE	BY	DESCRIPTION
7/2022	JES		Added optional sharrow for drop lane conditions

ACHD
Traffic Engineering Division
3775 Adams Street Boise, ID 83714
www.achdidaho.org

• SIGNATURES •	
Scale: NTS	Drawn By: Joshua Saak
Date: 10/15/2008	Design By: Joshua Saak
File: TS-1112.08.DWG	Approved By: Colby GeDeros

• SHEET TITLE •	
Standard Traffic Stripe Details - Right Turn Drop Lane w/Bike Lane	

PROFESSIONAL ENGINEER
REGISTERED
12842
STATE OF IDAHO
JOSHUA E. BANKS

STANDARD DETAIL NO. TS-1112.08

TABLE 1 - MINIMUM TAPER LENGTHS

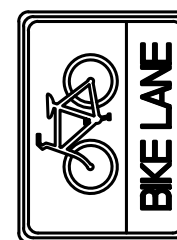
SPEED LIMIT (MPH)	OFFSET (FEET)													
	1	2	3	4	5	6	7	8	9	10	11	12	13	14
20	10	15	20	30	35	40	50	55	60	70	75	80	90	95
25	15	25	35	45	55	65	75	85	95	105	115	125	140	150
30	15	30	45	60	75	90	105	120	135	150	165	180	195	210
35	25	45	65	85	105	125	145	165	185	205	225	245	270	290
40	30	55	80	110	135	160	190	215	240	270	295	320	350	375
45	45	90	135	180	225	270	315	360	405	450	495	540	585	630
50	50	100	150	200	250	300	350	400	450	500	550	600	650	700
55	55	110	165	220	275	330	385	440	495	550	605	660	715	770

TAPER = $WS^2/60$

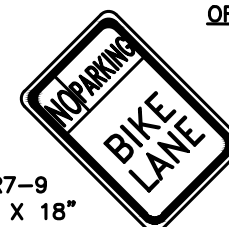
TAPER = WS

Legend

(XX) Striping Detail Number



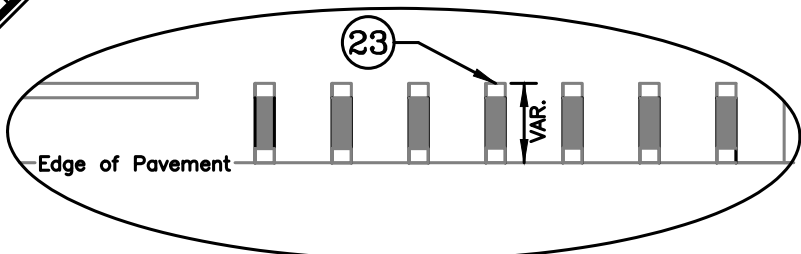
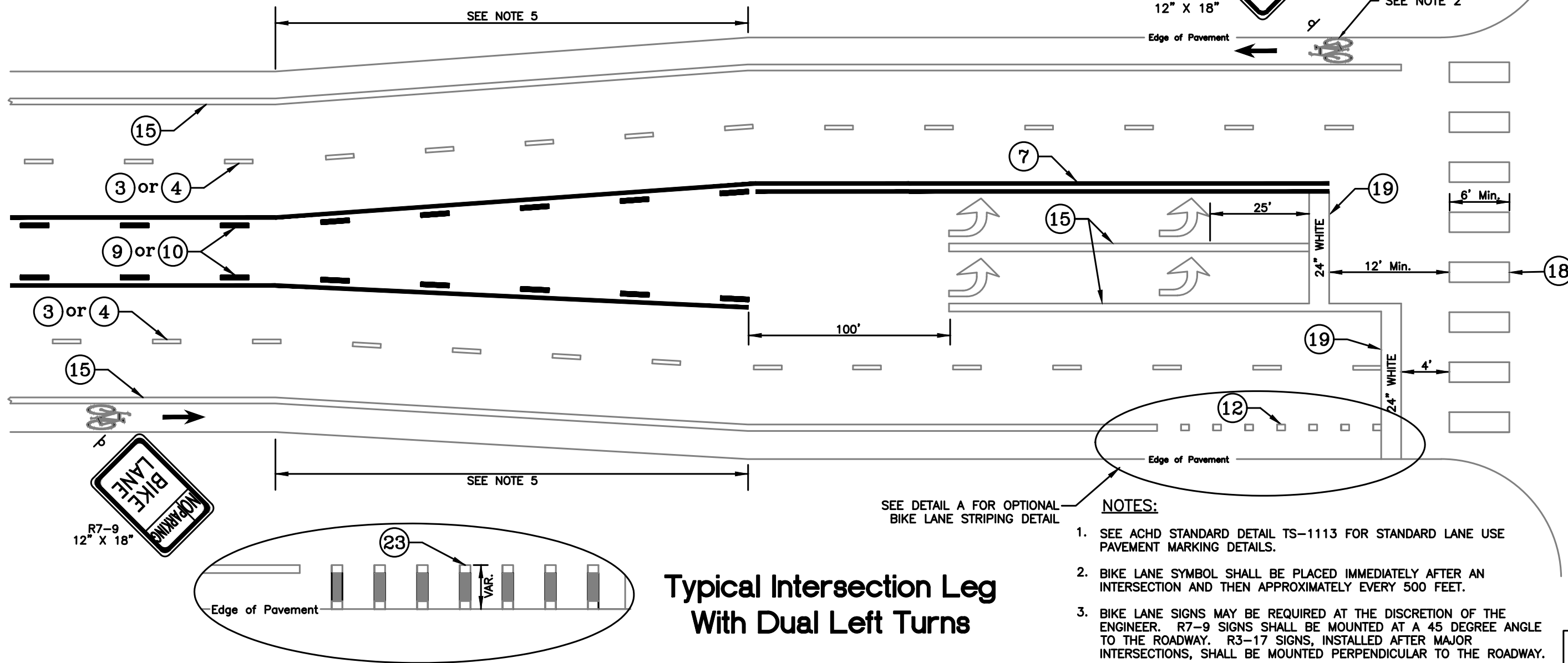
R3-17
18" X 24"



R7-9
12" X 18"

OR

SEE NOTE 2



Detail A

**Typical Intersection Leg
With Dual Left Turns**

SEE DETAIL A FOR OPTIONAL BIKE LANE STRIPING DETAIL

NOTES:

- SEE ACHD STANDARD DETAIL TS-1113 FOR STANDARD LANE USE PAVEMENT MARKING DETAILS.
- BIKE LANE SYMBOL SHALL BE PLACED IMMEDIATELY AFTER AN INTERSECTION AND THEN APPROXIMATELY EVERY 500 FEET.
- BIKE LANE SIGNS MAY BE REQUIRED AT THE DISCRETION OF THE ENGINEER. R7-9 SIGNS SHALL BE MOUNTED AT A 45 DEGREE ANGLE TO THE ROADWAY. R3-17 SIGNS, INSTALLED AFTER MAJOR INTERSECTIONS, SHALL BE MOUNTED PERPENDICULAR TO THE ROADWAY.
- ADD SUPPLEMENTAL RIGHT AND LEFT TURN ARROWS IF TURN BAY LENGTHS EXCEED 200'.
- LEFT TURN BAY TAPER LENGTHS SHALL BE DETERMINED BASED ON INFORMATION PROVIDED IN TABLE 1 ON THIS SHEET.

NO.	DATE	BY	DESCRIPTION
12/2016	JES		Added green bike lane option

ACHD
Traffic Engineering Division
3775 Adams Street Boise, ID 83714
www.achdidaho.org

• SIGNATURES •	
Scale: NTS	Drawn By: Joshua Seak
Date: 4/23/2010	Design By: Joshua Seak
File: TS-1112.09.DWG	Approved By: Colby Gerosa

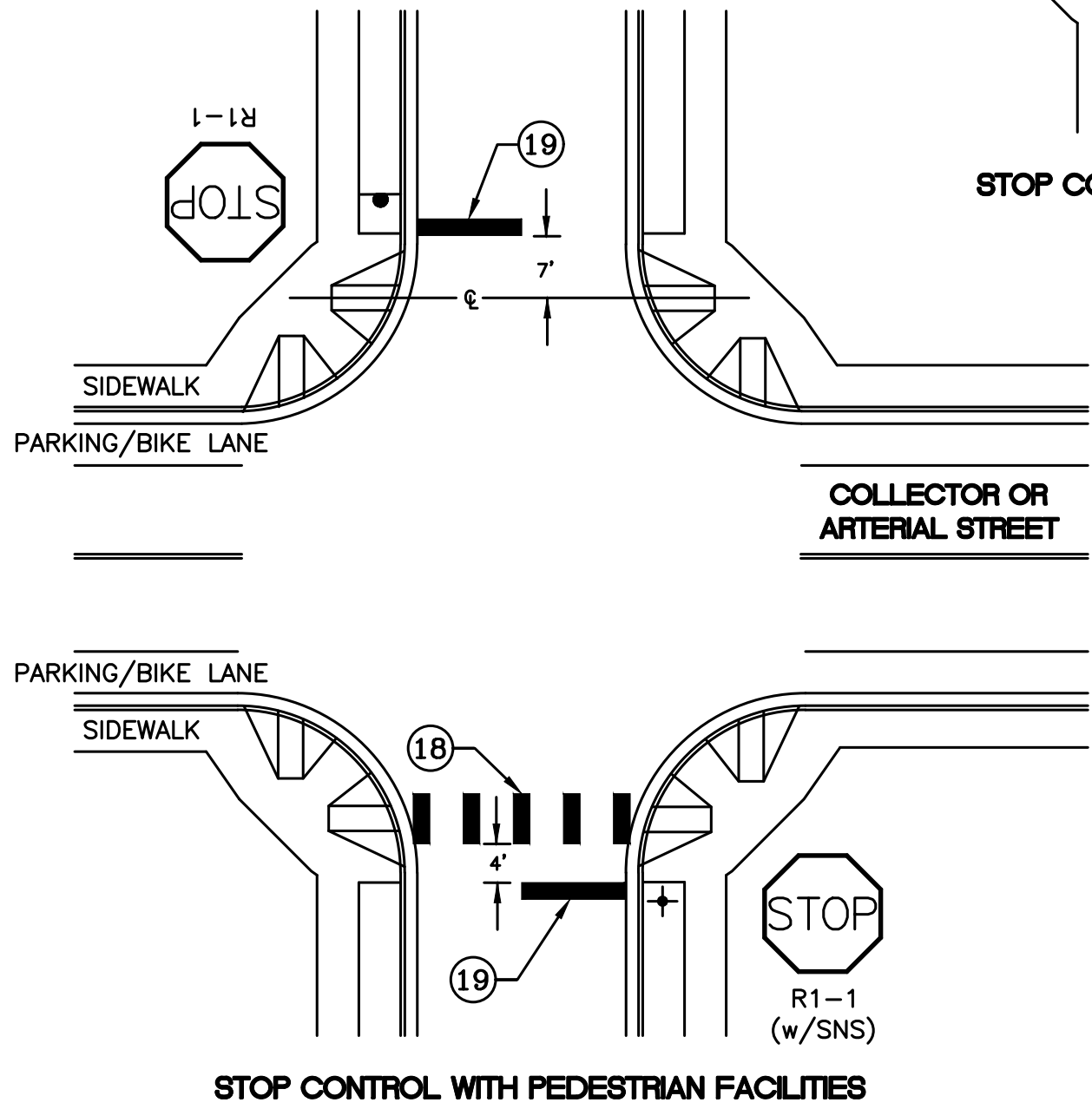
• SHEET TITLE •	
Standard Traffic Stripe Details - Typical Intersection w/Dual Left Turn Lanes	

PROFESSIONAL ENGINEER
REGISTERED
12842
STATE OF IDAHO
JOSHUA EBANKS

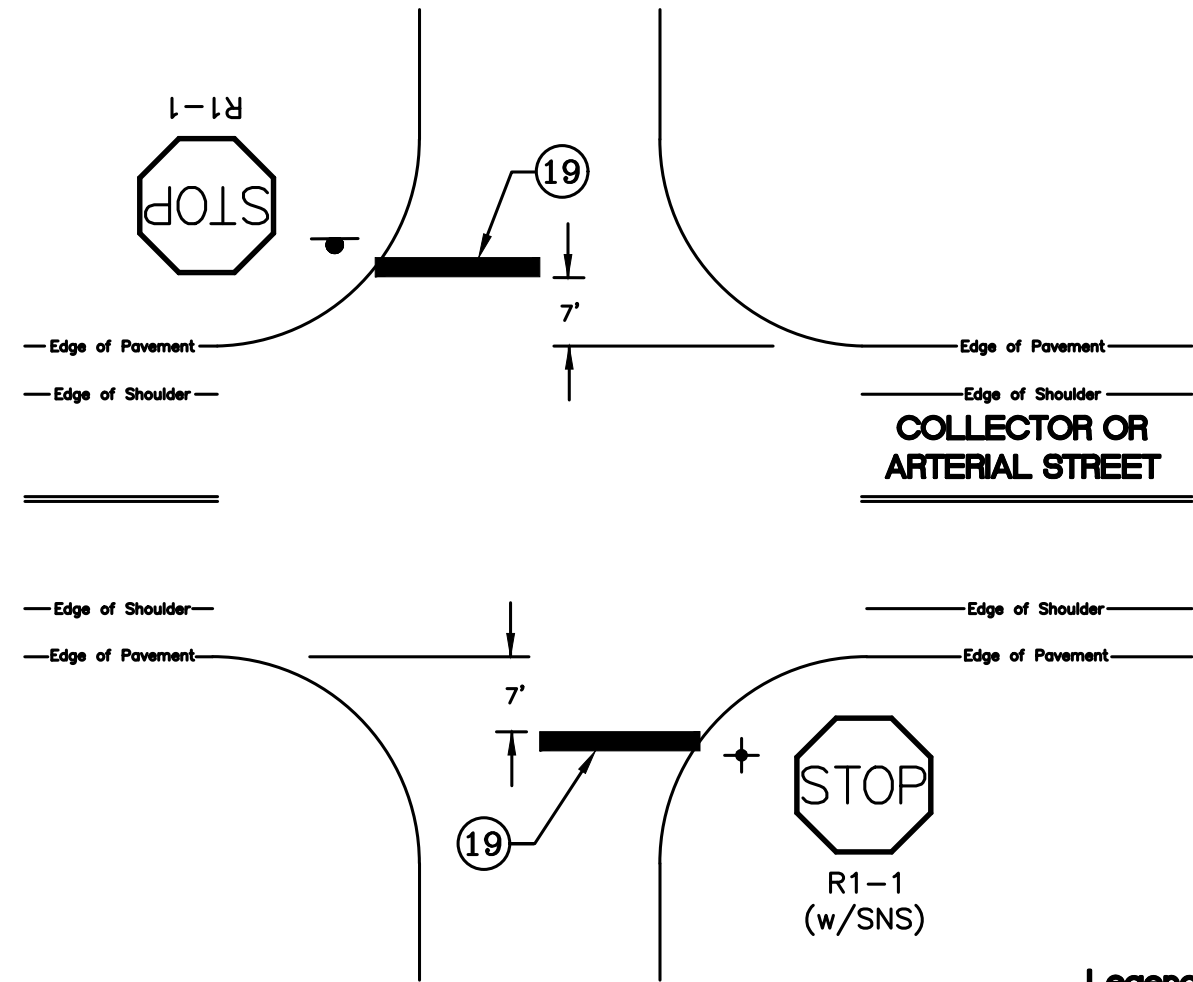
• STANDARD DETAIL NO. •
TS-1112.09

s:\Traffic Specifications\2014 Standard Plans\ts-1112.09.DWG

TYPICAL STOP BAR AND CROSSWALK INSTALLATION AT STOP CONTROLLED INTERSECTIONS



STOP CONTROL WITH PEDESTRIAN FACILITIES AND OFFSET RAMP



STOP CONTROL WITHOUT PEDESTRIAN FACILITIES

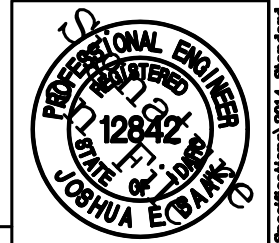
NOTES:

1. CROSSWALKS, WHERE INSTALLED, SHOULD BE CENTERED ON THE PEDESTRIAN RAMPS PARALLEL TO THE DIRECTION OF TRAVEL.
2. STOP BARS, WHERE INSTALLED, SHOULD BE PLACED FOUR (4) FEET IN ADVANCE OF A MARKED CROSSWALK.
3. STOP BARS, WHEN INSTALLED, SHOULD BE PLACED SEVEN (7) FEET IN ADVANCE OF AN UNMARKED CROSSWALK, AS MEASURED FROM A LINE CONNECTING THE CENTER OF THE PEDESTRIAN RAMPS.
4. STOP BARS, WHEN INSTALLED, SHOULD BE PLACED SEVEN (7) FEET FROM THE EDGE OF THE PAVED SURFACE OF THE CROSS STREET IN THE ABSENCE OF PEDESTRIAN FACILITIES ON SAID STREET.
5. TYPICAL DIMENSIONS DEPICTED MAY BE MODIFIED BASED ON SITE SPECIFIC CONDITIONS AT THE DISCRETION OF THE ACHD TRAFFIC ENGINEER.

Legend

(XX) Striping Detail Number

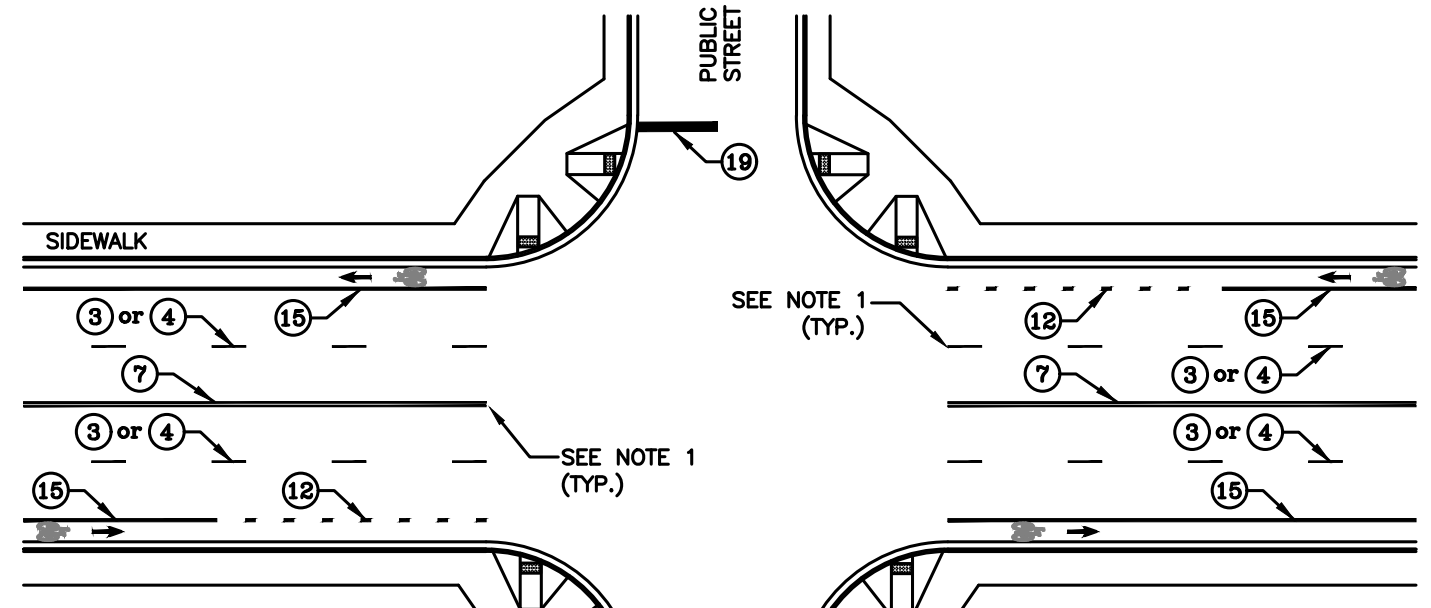
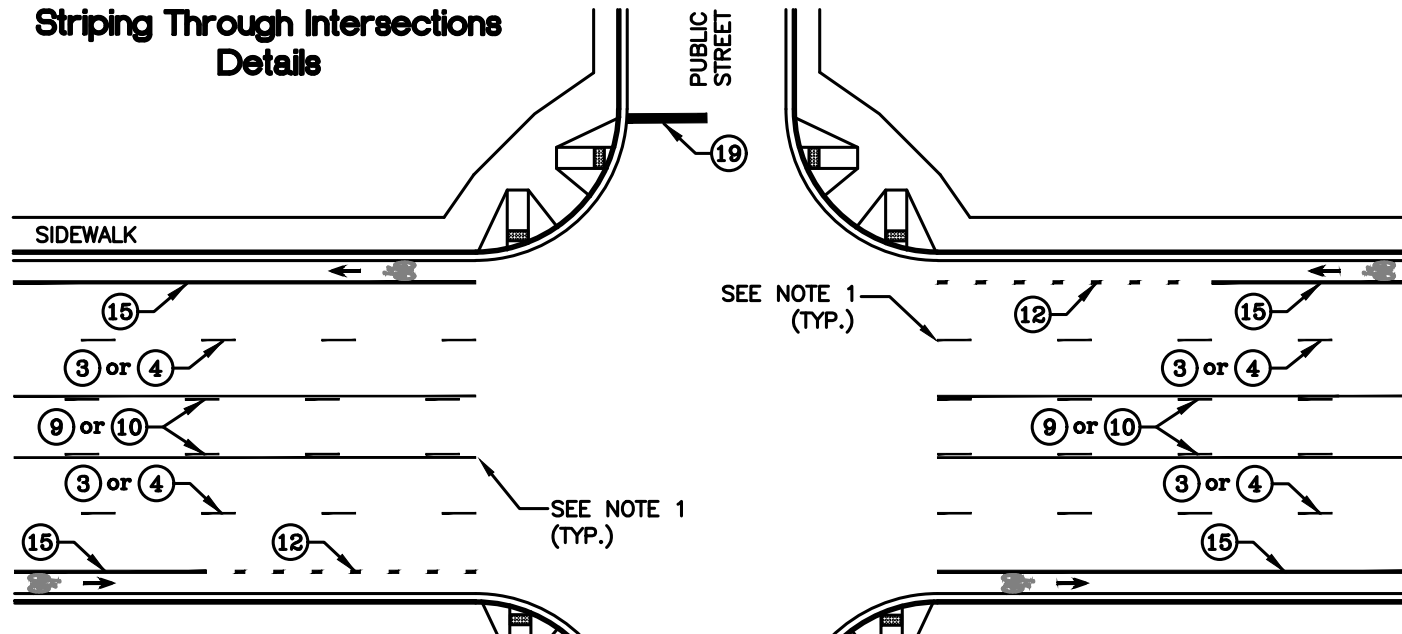
Traffic Engineering Division									
3775 Adams Street Boise, ID 83714 www.achdidaho.org									
<table border="1"> <tr> <th>NO.</th> <th>DATE</th> <th>BY</th> <th>DESCRIPTION</th> </tr> <tr> <td>12/2016</td> <td>JES</td> <td></td> <td>Added offset crosswalk detail</td> </tr> </table>		NO.	DATE	BY	DESCRIPTION	12/2016	JES		Added offset crosswalk detail
NO.	DATE	BY	DESCRIPTION						
12/2016	JES		Added offset crosswalk detail						
<p>• SIGNATURES •</p> <table border="1"> <tr> <td>Scale: NTS</td> <td>Drawn By: Joshua Seak</td> </tr> <tr> <td>Date: 6/16/2016</td> <td>Design By: Joshua Seak</td> </tr> <tr> <td>File: TS-1112.10.DWG</td> <td>Approved By: Colby GeDeros</td> </tr> </table>		Scale: NTS	Drawn By: Joshua Seak	Date: 6/16/2016	Design By: Joshua Seak	File: TS-1112.10.DWG	Approved By: Colby GeDeros		
Scale: NTS	Drawn By: Joshua Seak								
Date: 6/16/2016	Design By: Joshua Seak								
File: TS-1112.10.DWG	Approved By: Colby GeDeros								
<p>• SHEET TITLE •</p> <p>Standard Traffic Stripe Details – Stop Bars and Crosswalks</p>									



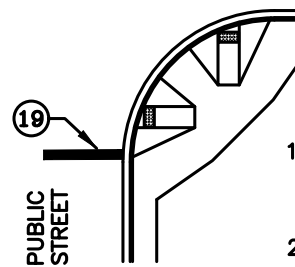
STANDARD DETAIL NO. TS-1112.10

S:\Traffic Specifications\2014 Standard Plans\ts-1112.10.DWG

Striping Through Intersections Details



STRIPING THROUGH FIVE LANE INTERSECTIONS

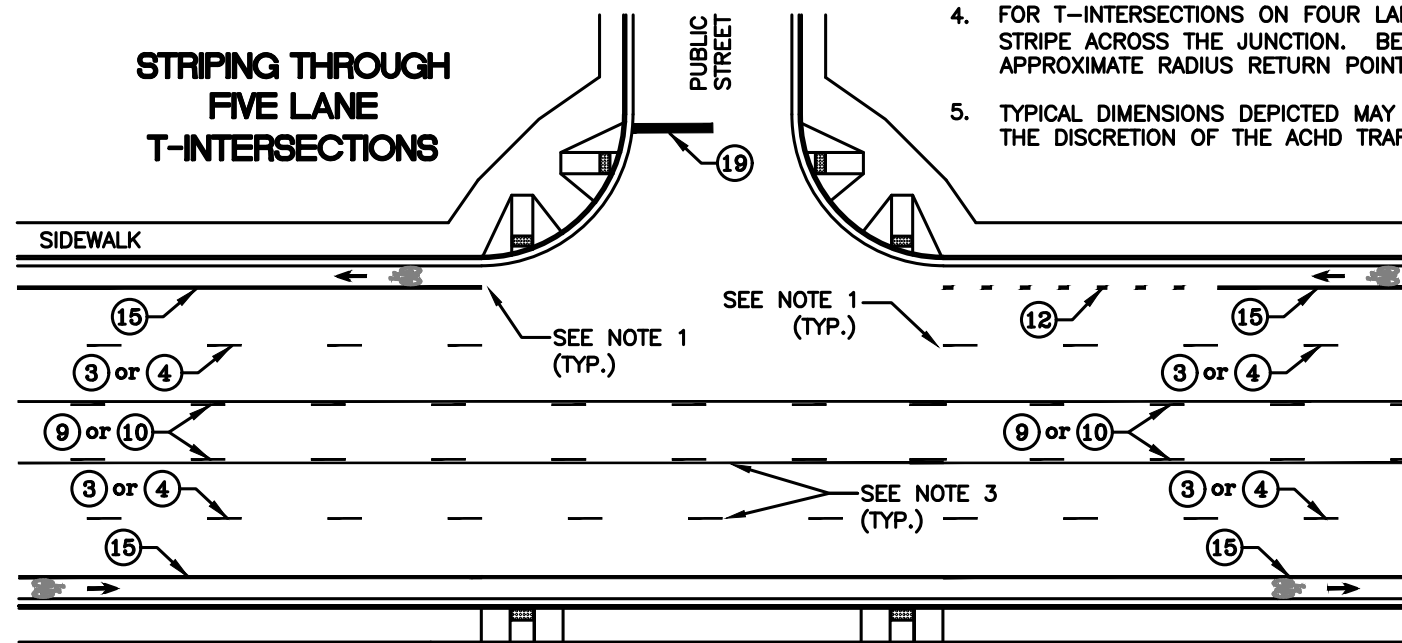


NOTES:

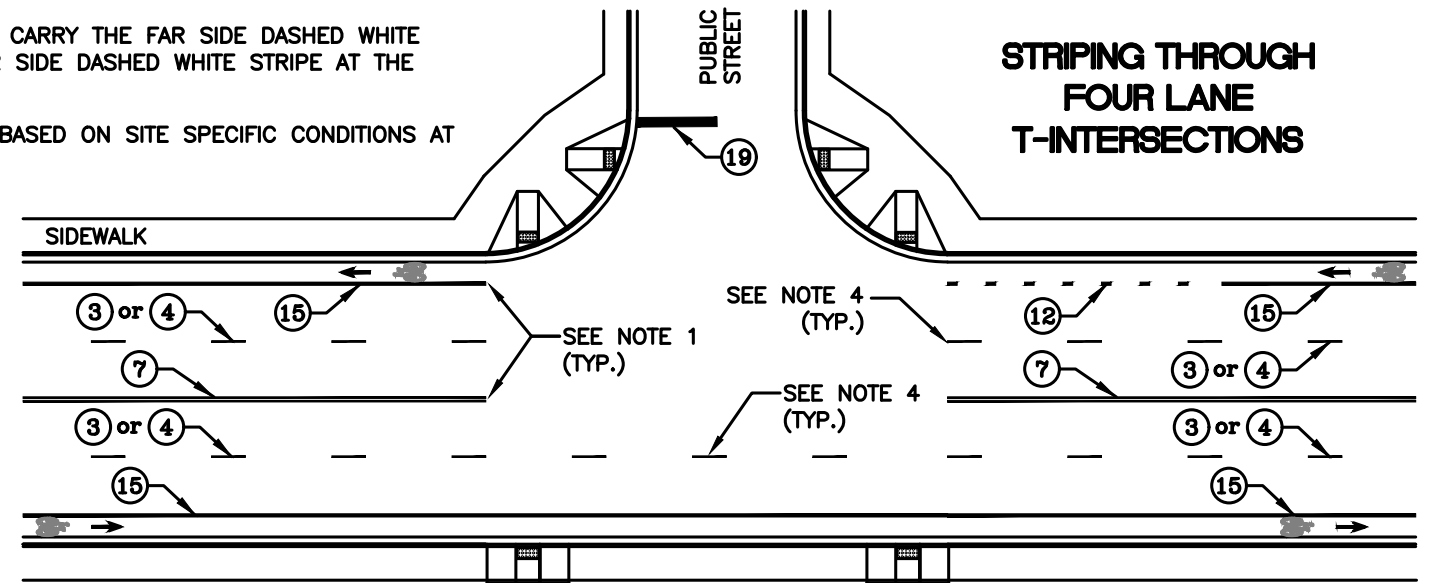
1. BEGIN/END LONG LINE STRIPING AT THE APPROXIMATE RADIUS RETURN POINT OF THE NEAREST INTERSECTION. STRIPING SHOULD BE CARRIED THROUGH PRIVATELY MAINTAINED STREETS AND DRIVEWAYS UNLESS OTHERWISE NOTED ON THE PLAN SHEETS.
2. STOP BARS ON SIDE STREETS ARE SHOWN FOR CLARITY. REFER TO PLAN SHEETS FOR DETAILS.
3. FOR T-INTERSECTIONS ON FIVE LANE ROADWAYS, CARRY THE CENTER TURN LANE AND FAR SIDE DASHED WHITE STRIPE ACROSS THE JUNCTION. BEGIN/END NEAR SIDE DASHED WHITE STRIPE AT THE APPROXIMATE RADIUS RETURN POINTS.
4. FOR T-INTERSECTIONS ON FOUR LANE ROADWAYS, CARRY THE FAR SIDE DASHED WHITE STRIPE ACROSS THE JUNCTION. BEGIN/END NEAR SIDE DASHED WHITE STRIPE AT THE APPROXIMATE RADIUS RETURN POINTS.
5. TYPICAL DIMENSIONS DEPICTED MAY BE MODIFIED BASED ON SITE SPECIFIC CONDITIONS AT THE DISCRETION OF THE ACHD TRAFFIC ENGINEER.

STRIPING THROUGH FOUR LANE INTERSECTIONS

STRIPING THROUGH FIVE LANE T-INTERSECTIONS



STRIPING THROUGH FOUR LANE T-INTERSECTIONS



NO.	DATE	BY	DESCRIPTION
12/2021	JES		Minor design modifications

• REVISIONS •

ACHD
Traffic Engineering Division
3775 Adams Street Boise, ID 83714
www.achdidaho.org

• SIGNATURES •	
Scale: NTS	Drawn By: Joshua Seak
Date: 12/6/2016	Design By: Joshua Seak
File: TS-1112.11.DWG	Approved By: Colby GeDeros

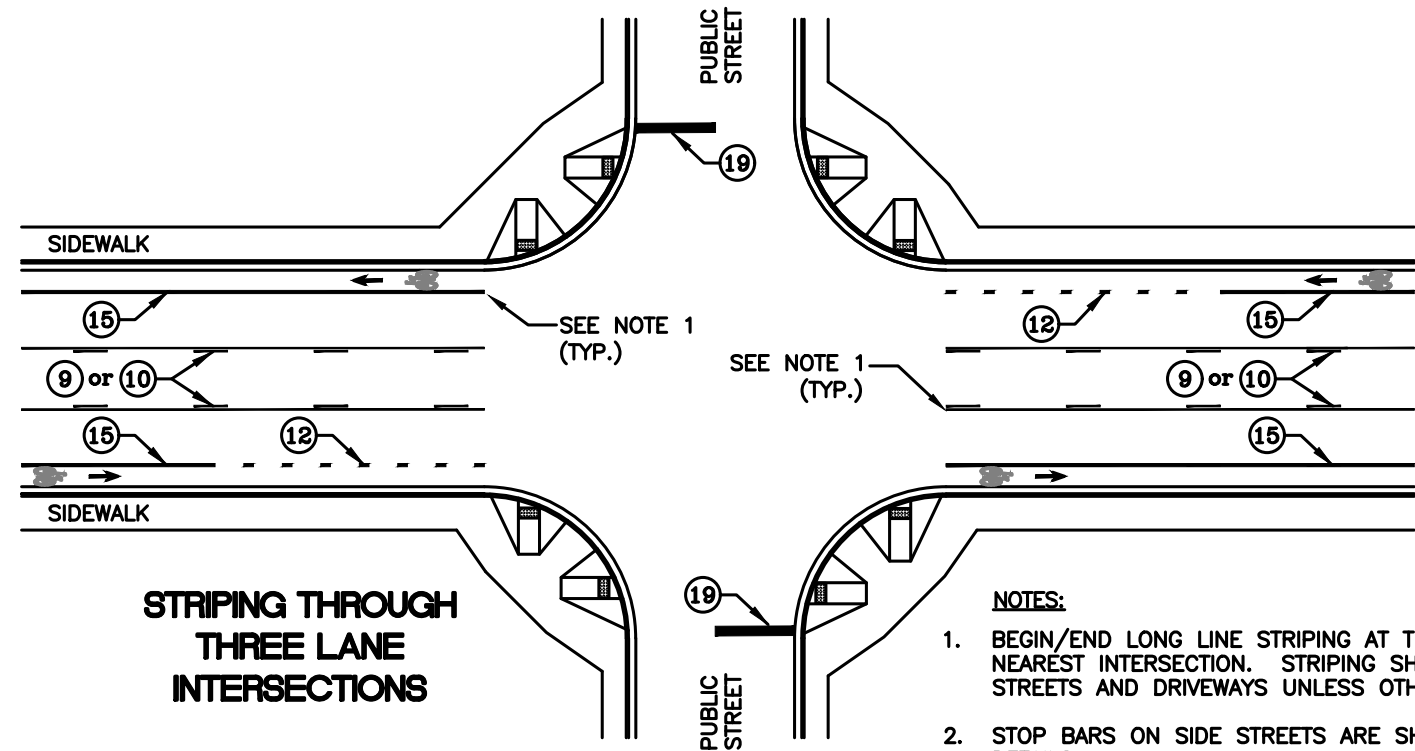
• SHEET TITLE •	
Intersection Striping Details – Striping Through Intersections	

PROFESSIONAL ENGINEER
REGISTERED
12842
STATE OF IDAHO
JOSHUA E. SEAK

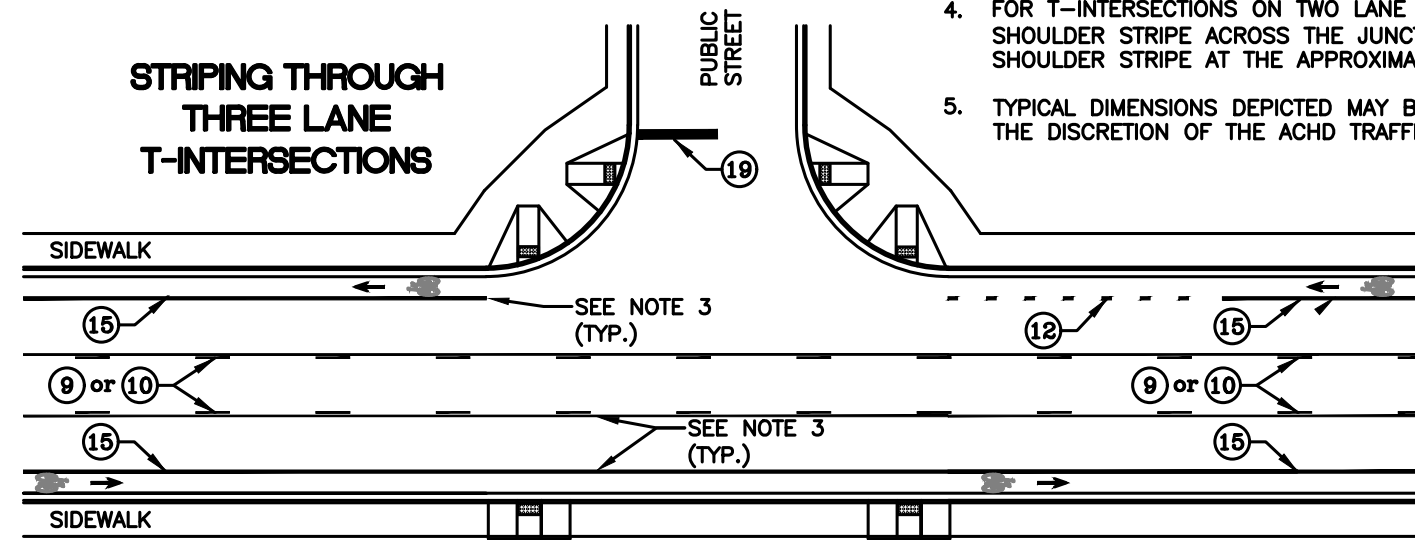
• STANDARD DETAIL NO. •
TS-1112.11

S:\Traffic Specifications\2014 Standard Plans\16-1112.11.DWG

Striping Through Intersections Details



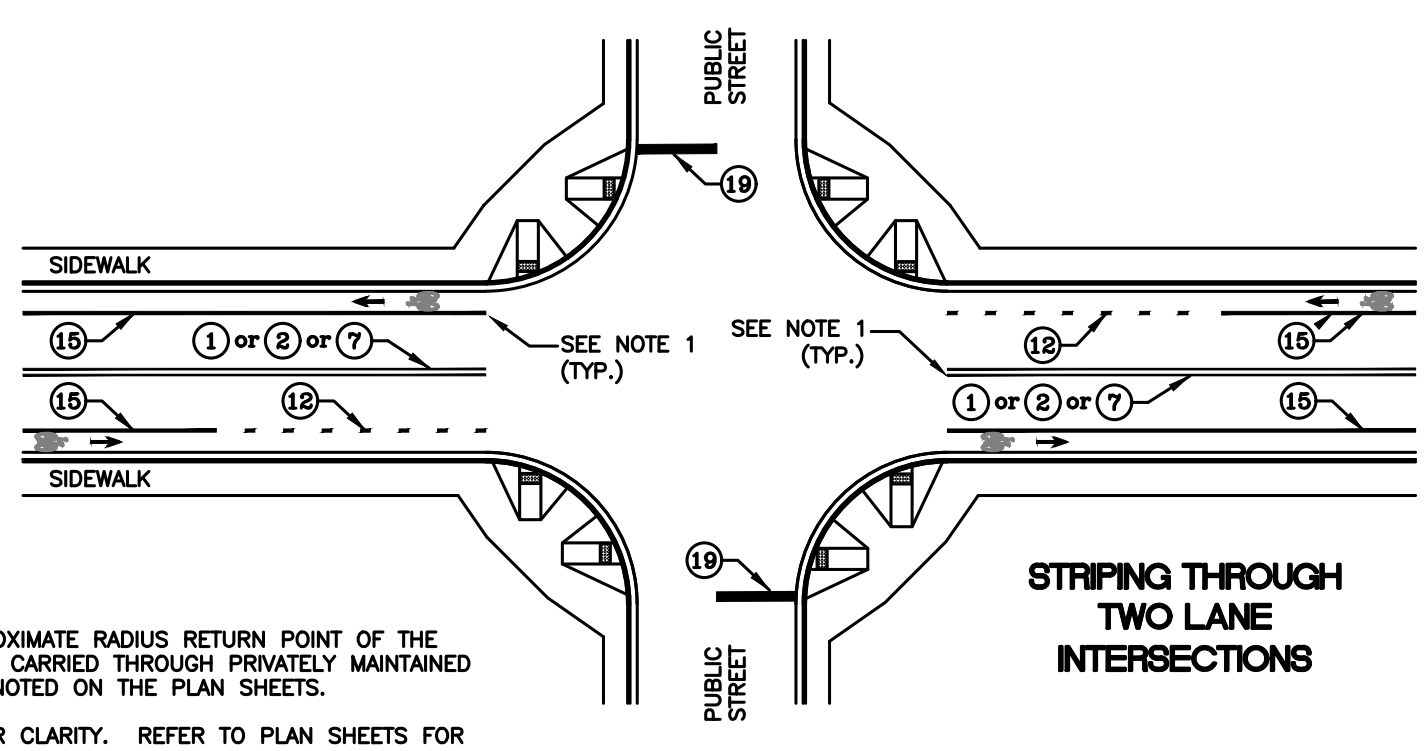
**STRIPING THROUGH
THREE LANE
INTERSECTIONS**



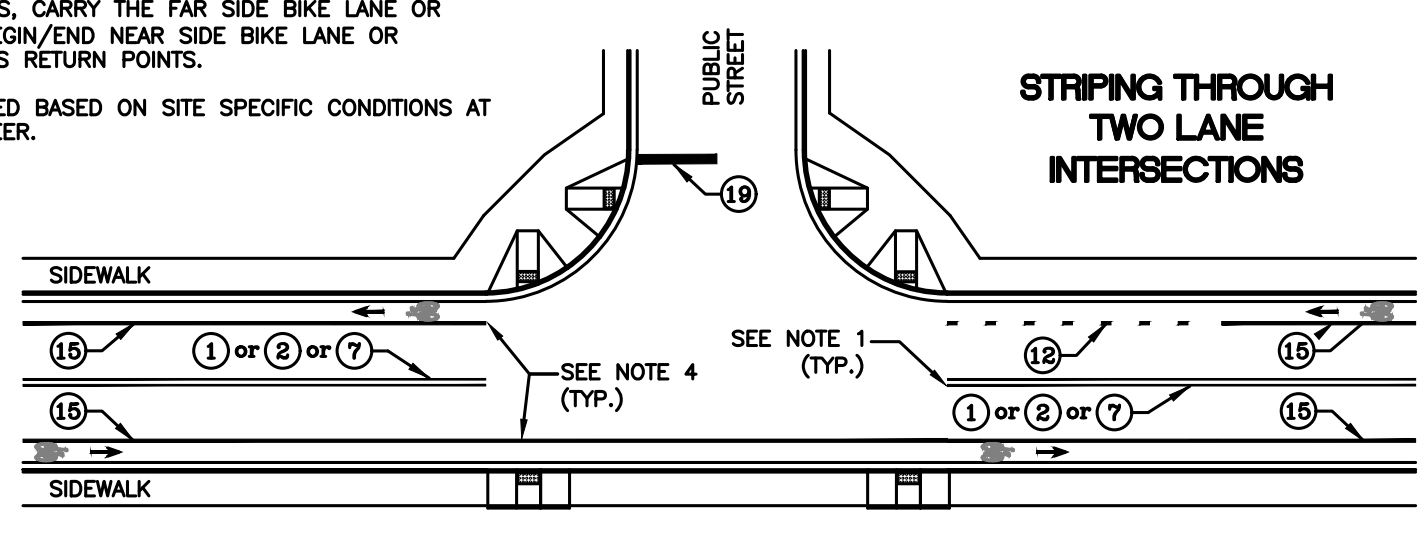
**STRIPING THROUGH
THREE LANE
T-INTERSECTIONS**

NOTES:

1. BEGIN/END LONG LINE STRIPING AT THE APPROXIMATE RADIUS RETURN POINT OF THE NEAREST INTERSECTION. STRIPING SHOULD BE CARRIED THROUGH PRIVATELY MAINTAINED STREETS AND DRIVEWAYS UNLESS OTHERWISE NOTED ON THE PLAN SHEETS.
2. STOP BARS ON SIDE STREETS ARE SHOWN FOR CLARITY. REFER TO PLAN SHEETS FOR DETAILS.
3. FOR T-INTERSECTIONS ON THREE LANE ROADWAYS, CARRY THE CENTER TURN LANE ACROSS THE JUNCTION. BEGIN/END NEAR SIDE BIKE LANE OR SHOULDER STRIPE AT THE APPROXIMATE RADIUS RETURN POINTS.
4. FOR T-INTERSECTIONS ON TWO LANE ROADWAYS, CARRY THE FAR SIDE BIKE LANE OR SHOULDER STRIPE ACROSS THE JUNCTION. BEGIN/END NEAR SIDE BIKE LANE OR SHOULDER STRIPE AT THE APPROXIMATE RADIUS RETURN POINTS.
5. TYPICAL DIMENSIONS DEPICTED MAY BE MODIFIED BASED ON SITE SPECIFIC CONDITIONS AT THE DISCRETION OF THE ACHD TRAFFIC ENGINEER.



**STRIPING THROUGH
TWO LANE
INTERSECTIONS**



**STRIPING THROUGH
TWO LANE
INTERSECTIONS**

NO.	DATE	BY	DESCRIPTION
1	12/2021	JES	Minor design modifications

• REVISIONS •

ACHD
Traffic Engineering Division
3775 Adams Street Boise, ID 83714
www.achdidaho.org

• SIGNATURES •	
Scale: NTS	Drawn By: Joshua Seak
Date: 12/6/2016	Design By: Joshua Seak
File: TS-1112.12.DWG	Approved By: Shawn Martin

• SHEET TITLE •	
Intersection Striping Details – Striping Through Intersections	

PROFESSIONAL ENGINEER
REGISTERED
STATE OF IDAHO
12842
JOSHUA E. SEAK

• STANDARD DETAIL NO. •
TS-1112.12

S:\Traffic Specifications\10600 Standard Plans\12-1112.12.DWG