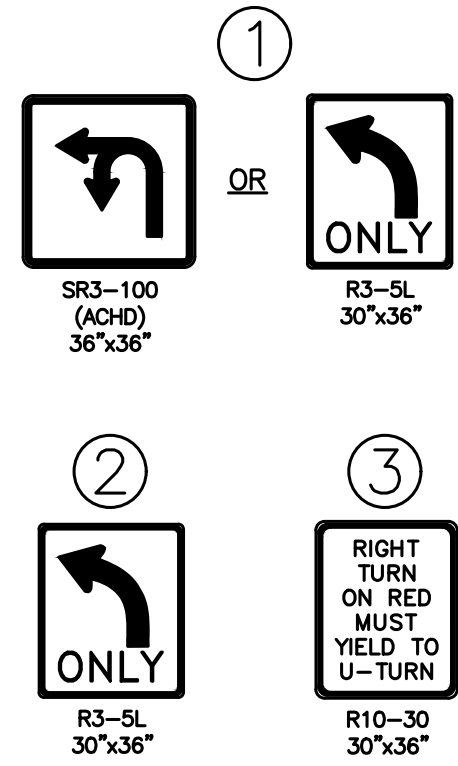
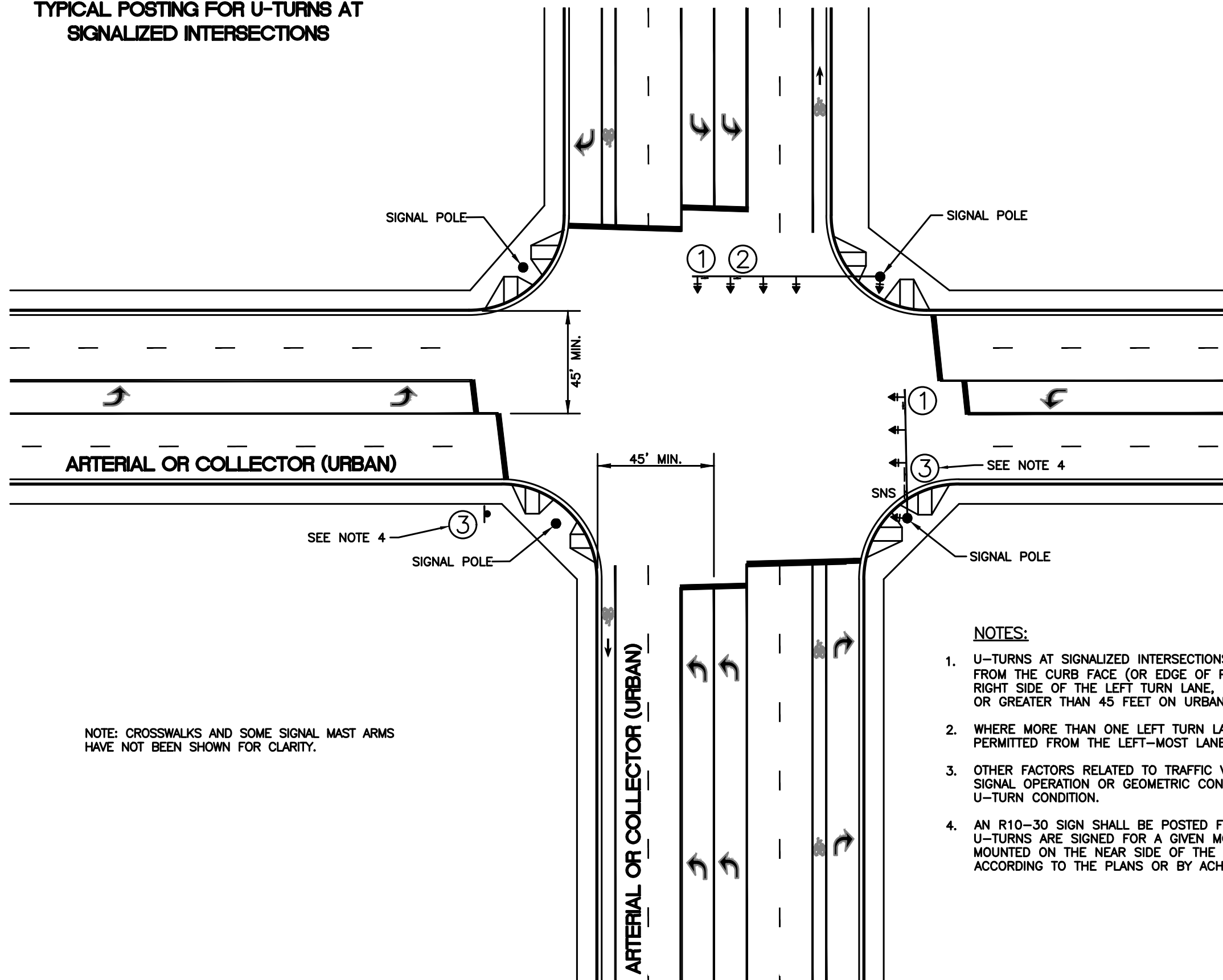


**TYPICAL POSTING FOR U-TURNS AT SIGNALIZED INTERSECTIONS**



NOTE: CROSSWALKS AND SOME SIGNAL MAST ARMS HAVE NOT BEEN SHOWN FOR CLARITY.

**NOTES:**

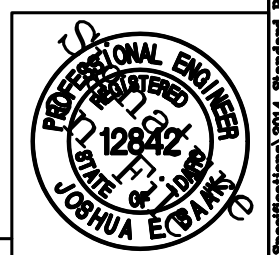
1. U-TURNS AT SIGNALIZED INTERSECTIONS MAY BE PERMITTED IF THE DISTANCE FROM THE CURB FACE (OR EDGE OF PAVEMENT, IF NO CURB EXISTS) TO THE RIGHT SIDE OF THE LEFT TURN LANE, MEASURED AT THE STOP BAR, IS EQUAL TO OR GREATER THAN 45 FEET ON URBAN ARTERIALS OR COLLECTORS.
2. WHERE MORE THAN ONE LEFT TURN LANE IS PRESENT, U-TURNS SHALL BE PERMITTED FROM THE LEFT-MOST LANE ONLY.
3. OTHER FACTORS RELATED TO TRAFFIC VOLUMES, SPEED LIMITS, SIGHT DISTANCE, SIGNAL OPERATION OR GEOMETRIC CONFIGURATION MAY PREVENT POSTING OF A U-TURN CONDITION.
4. AN R10-30 SIGN SHALL BE POSTED FOR THE CONFLICTING RIGHT TURN IF U-TURNS ARE SIGNED FOR A GIVEN MOVEMENT. R10-30 SIGNS MAY BE POST MOUNTED ON THE NEAR SIDE OF THE APPROACH OR MAST ARM MOUNTED ACCORDING TO THE PLANS OR BY ACHD TRAFFIC ENGINEER DIRECTION.

NO.	DATE	BY	DESCRIPTION
12/2021	JES		Made minor modifications for clarity

• REVISIONS •



• SIGNATURES •		• SHEET TITLE •	
Scale: NTS	Drawn By: Joshua Seak	U-Turns at Signalized Intersections	
Date: 7/2/2010	Design By: Joshua Seak		
File: TS-1120.01.DWG	Approved By: Shawn Martin		



STANDARD DETAIL NO. TS-1120.01

S:\Traffic Specifications\2014 Standard Plans\ts-1120.01.DWG