

ABBREVIATIONS AND EQUIPMENT DESIGNATIONS

PROPOSED	EXISTING	
AC+		An ungrounded conductor
AC-		A grounded conductor
ATC		Automatic traffic counter
AWG		American wire gage
C		Conduit
CCTV	cctv	Closed circuit television
CMS	cms	Changeable message sign
DMS	dms	Dynamic message sign
EVP	evp	Emergency vehicle preemption (Opticom)
FB	fb	Flashing beacon
HPS	hps	High pressure sodium
LED	led	Light emitting diode
MA	ma	Mast arm, signal
PB	pb	Pullbox
PED	ped	Pedestrian
PEU	peu	Photoelectric unit
PHB	phb	Pedestrian Hybrid Beacon
PPB	ppb	Pedestrian push button
RRFB	rrfb	Rectangular Rapid Flashing Beacon
SB	sb	Slip Base
SIC	sic	Signal interconnect cable
S/M	s/m	Series to multiple transformer
SN		Solid neutral
SP	sp	Service point
VMS	vms	Variable message sign
WAV	wav	Wavetronix radar detection
XFMR	xfmr	Transformer

CONTROLLER AND SERVICE EQUIPMENT

PROPOSED	EXISTING	
		PAD MOUNT FOR GROUND-MOUNTED UTILITY TRANSFORMER
		SERVICE PEDESTAL
		DUAL METER SERVICE ENCLOSURE
		SIGNAL CONTROLLER CABINET (DOOR INDICATES FRONT OF ENCLOSURE)
		UNINTERRUPTABLE POWER SUPPLY (UPS) CABINET

PULL BOXES

PROPOSED	EXISTING	
		S40-T/ADA PULL BOX
		S45-T/ADA PULL BOX
		S45-T/ADA PULL BOX W/RISER
		32" X 32" PULL BOX
		S51/ADA PULL BOX (FIBER)
		25-TA SPLICE VAULT (FIBER)

NON ILLUMINATED ROADSIDE SIGNS

PROPOSED	EXISTING	
		SIGN (ONE POST)
		SIGN (TWO POST) OR TYPE II/III BARRICADE

SYMBOLS

PROPOSED	EXISTING	
		SIGNAL HEAD NUMBER
		PROJECT NOTE NUMBER
		CONDUIT RUN NUMBER

SIGN LIGHTING EQUIPMENT

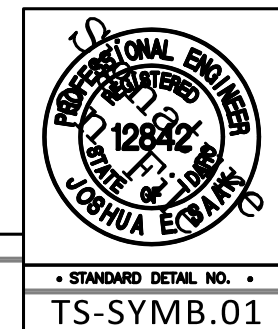
PROPOSED	EXISTING	
		OVERHEAD SIGN (SINGLE POST)
		OVERHEAD SIGN (TWO POSTS)
		OVERHEAD SIGN (STRUCTURE MOUNT)

NO.	DATE	BY	DESCRIPTION
10	10/2021	JES	Added additional symbols



• SIGNATURES •	
Scale: NTS	Drawn By: Joshua Seak
Date: 1/23/2020	Design By: Joshua Seak
File: TS-SYMB.01.DWG	Approved By: Shawn Martin

• SHEET TITLE •	
Signing, Striping, Signal, Lighting and Electrical Systems Symbols and Abbreviations	



SIGNAL EQUIPMENT

PROPOSED	EXISTING	
		VEHICULAR SIGNAL HEAD W/BACKPLATE (SEE NOTE 1) <u>3-Section</u> Red Ball or Amber Ball or Green Ball <u>Ped Hybrid Beacon</u> Red Ball / Red Ball or Amber Ball <u>School Zone Flasher</u> Amber Ball or Amber Ball
		LEFT TURN VEHICULAR SIGNAL HEAD W/BACKPLATE <u>3-Section</u> Red Arrow or Amber Arrow or Green Arrow <u>4-Section</u> Red Ball or Amber Ball or Green Ball <u>4-Section</u> Red Arrow or Amber Arrow or Green Arrow
		RIGHT TURN VEHICULAR SIGNAL HEAD W/BACKPLATE <u>3-Section</u> Red Arrow or Amber Arrow or Green Arrow <u>3-Section</u> Red Ball or Amber Arrow or Green Arrow <u>4-Section</u> Red Ball or Amber Ball or Green Ball or Amber/Green Arrow (Bi-Modal)
		PEDESTRIAN SIGNAL HEAD
		LUMINAIRE

VEHICLE DETECTORS

PROPOSED	EXISTING	
		VIDEO DETECTION ZONE
		PERFORMED INDUCTIVE COUNTER LOOP DETECTOR

MISCELLANEOUS EQUIPMENT

PROPOSED	EXISTING	
		CLOSED CIRCUIT TELEVISION CAMERA (CCTV)
		VIDEO DETECTION CAMERA
		SINGLE POINT DETECTION CAMERA
		RADAR DETECTION DEVICE
		EMERGENCY PREEMPTION DETECTOR (OPTICOM, ONE DIRECTION)
		EMERGENCY PREEMPTION DETECTOR (OPTICOM, TWO DIRECTIONS)
		CELLULAR ANTENNA

SIGNAL EQUIPMENT

PROPOSED	EXISTING	
		POLE MOUNTED SIGNAL HEAD
		POLE AND MAST ARM MOUNTED SIGNAL
		POLE AND MAST ARM MOUNTED SIGNAL HEAD W/LUMINAIRE
		RAPID RECTANGULAR FLASHING BEACON (RRFB), ONE DIRECTION
		RAPID RECTANGULAR FLASHING BEACON (RRFB), TWO DIRECTIONS

NOTES:

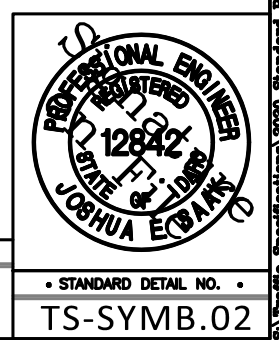
- OTHER SIGNAL HEAD CONFIGURATIONS (THROUGH ARROWS, ANGLED ARROWS, LOUVERED INDICATIONS, ETC.) MAY BE NECESSARY TO COMMUNICATE INTERSECTION-SPECIFIC GEOMETRY. SUCH MODIFICATIONS SHALL BE ADEQUATELY NOTED ON THE SIGNAL PLAN SHEETS.
- LUMINAIRES MAY BE STAND-ALONE OR SIGNAL POLE MOUNTED. SEE PLANS FOR DETAILS.

NO.	DATE	BY	DESCRIPTION
05/08	JES		Added radar detection device
10/2021	JES		Added additional symbols.

• REVISIONS •



• SIGNATURES •		• SHEET TITLE •	
Scale: NTS	Drawn By: Joshua Seak	Signing, Striping, Signal, Lighting and Electrical Systems Symbols and Abbreviations	
Date: 1/23/2020	Design By: Joshua Seak		
File: TS-SYMB.02.DWG	Approved By: Shawn Martin		



S:\Traffic Specifications\2020 Standard Plans\ts-symb.02.dwg