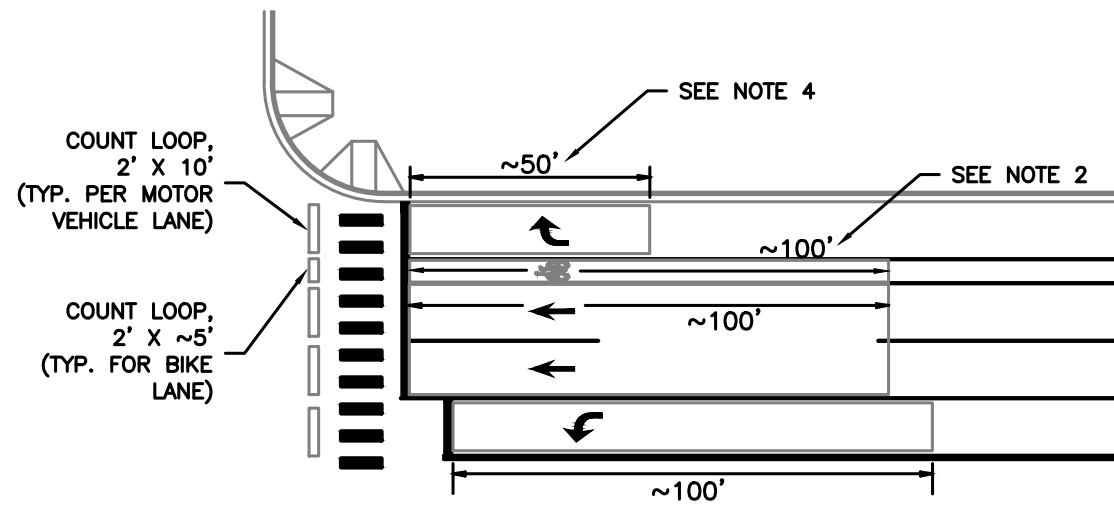
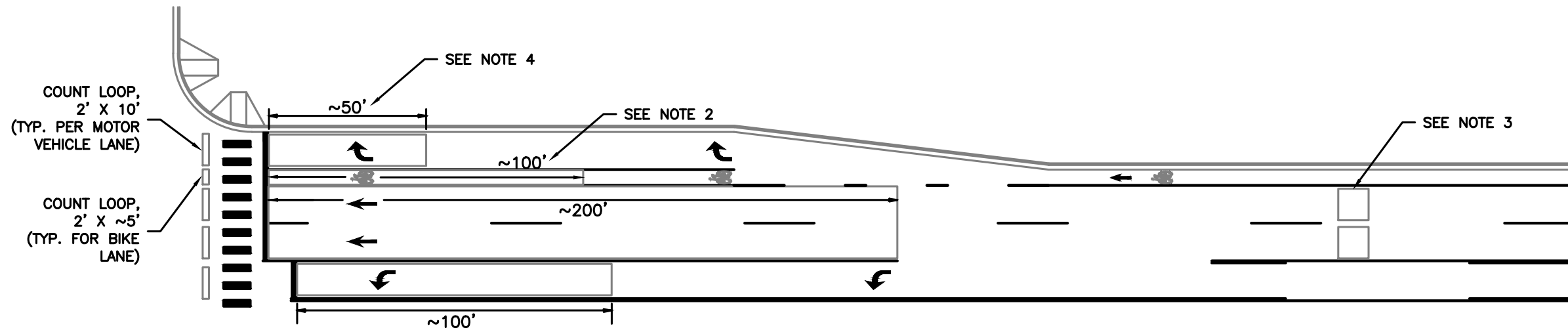


**NOTES:**

1. DRAWING IS NOT TO SCALE.
2. A SINGLE DETECTION ZONE PER PHASE PER MOTOR VEHICLE APPROACH SHALL BE INSTALLED. THIS WILL NOT INCLUDE THE BIKE LANE (IF PRESENT), WHICH WILL REQUIRE A SEPARATE DETECTION ZONE.
3. FOR POSTED SPEED LIMITS OF 45 MPH AND GREATER, ADVANCED DETECTION SHALL BE PROVIDED BY A SEPARATE SYSTEM. CONTACT ACHD TRAFFIC OPERATIONS REGARDING SITE SPECIFIC DETAILS FOR THE GIVEN INTERSECTION.
4. RIGHT TURN LANE DETECTION MAY NOT BE REQUIRED. CONTACT ACHD TRAFFIC OPERATIONS REGARDING SITE SPECIFIC DETAILS FOR THE GIVEN INTERSECTION.



**VIDEO DETECTION ZONES  
(20-40 MPH SPEED LIMIT)**



**VIDEO DETECTION ZONES  
(45 MPH AND HIGHER SPEED LIMIT)**

NO.	DATE	BY	DESCRIPTION
12/2021	JES		Added minor details
10/2021	JES		Modified detector zone spacing

• REVISIONS •

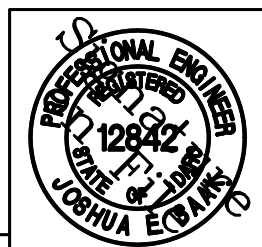


Traffic Engineering Division

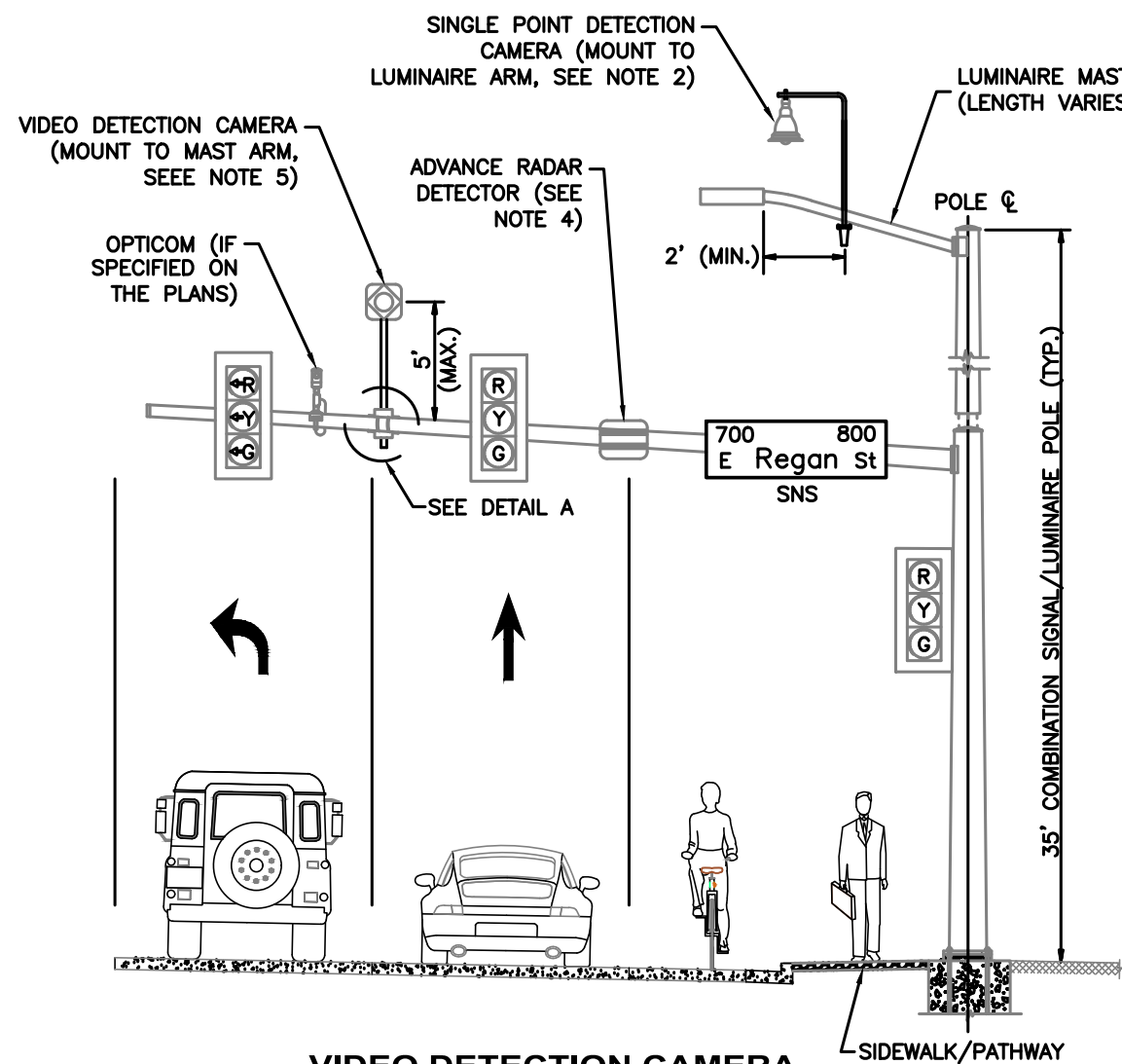
3775 Adams Street Boise, ID 83714  
www.achdidaho.org

• SIGNATURES •	
Scale: NTS	Drawn By: Joshua Seak
Date: 11/1/2021	Design By: Brian Crispin
File: TS-1102.01.DWG	Approved By: Greg Fullerton

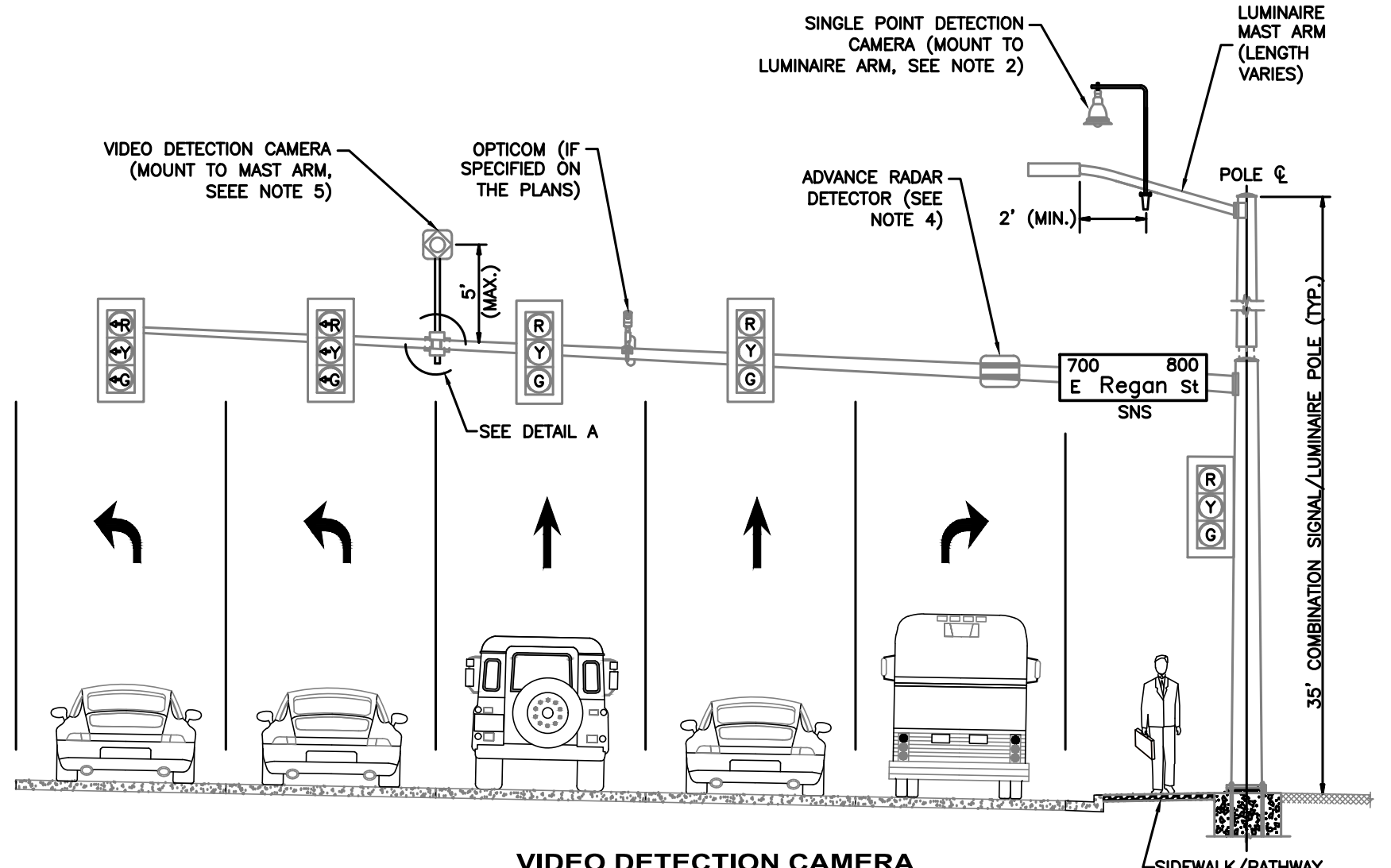
• SHEET TITLE •  
Standard Video Detection  
Zone Spacing Detail



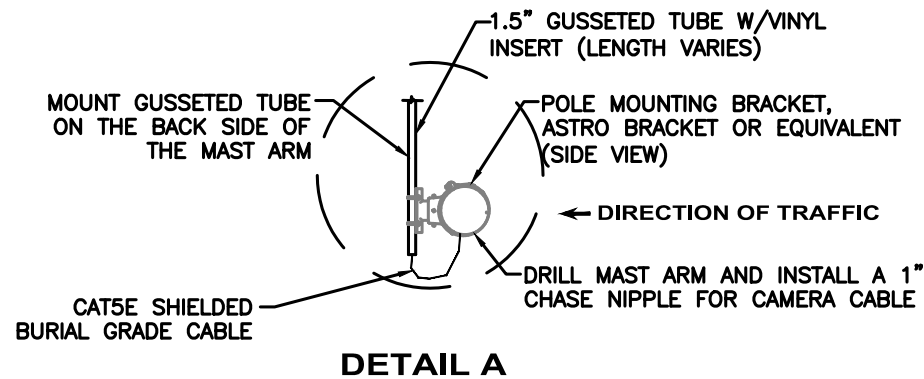
• STANDARD DETAIL NO. •  
TS-1102.01



**VIDEO DETECTION CAMERA MOUNTING DETAILS (FOUR OR FEWER APPROACH LANES)**



**VIDEO DETECTION CAMERA MOUNTING DETAILS (FIVE OR MORE APPROACH LANES)**



**DETAIL A**

**NOTES:**

1. DRAWING IS NOT TO SCALE.
2. SINGLE POINT DETECTION CAMERAS SHALL BE INSTALLED ON THE LUMINAIRE MAST ARM AT A MINIMUM MOUNTING HEIGHT OF 30'. IF NO LUMINAIRE ARM IS PRESENT, THE CAMERA MAY BE INSTALLED ON THE MAST ARM AT A MOUNTING HEIGHT NO LOWER THAN 27', ASSUMING IT CAN BE LOCATED NEAR THE CENTER WITH NO OCCLUSION.
3. SINGLE POINT DETECTION CAMERAS SHALL BE LOCATED LESS THAN 75' FROM THE CENTER OF THE INTERSECTION WHEN MOUNTED ON A LUMINAIRE ARM. WHEN MOUNTED ON A MAST ARM, THE CAMERA SHALL BE LOCATED NO MORE THAN 50' FROM THE CENTER OF THE INTERSECTION.
4. AN ADVANCE DETECTOR SHALL BE PROVIDED IF THE POSTED SPEED LIMIT OF THE APPROACHING ROADWAY IS 45 MPH OR GREATER. THE CAMERA SHALL BE MOUNTED IN THE SAME DIRECTION AS THE MAST ARM MOUNTED CAMERA. DESIGN EXCEPTIONS MAY BE NECESSARY IF SITE CONDITIONS PREVENT LUMINAIRE INSTALLATION ON THE GIVEN APPROACH.
5. SUPPLEMENTAL VIDEO DETECTION CAMERAS MAY BE REQUIRED IF THE NUMBER OF APPROACHING LANES IS GREATER THAN FOUR (EXCLUDING RIGHT TURN LANES). SEE PLANS FOR DETAILS REGARDING CAMERA CONFIGURATION.

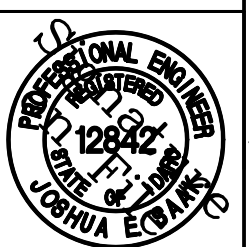
NO.	DATE	BY	DESCRIPTION

• REVISIONS •



3775 Adams Street Boise, ID 83714  
www.achdidaho.org

• SIGNATURES •		• SHEET TITLE •	
Scale: NTS	Drawn By: Joshua Seak	Standard Video Detection Camera Mounting Detail	
Date: 11/8/2021	Design By: Joshua Seak		
File: TS-1102.02.DWG	Approved By: Greg Fullerton		



• STANDARD DETAIL NO. •  
TS-1102.02