

NOTES

1. WHEN CROSSWALKS, SIDEWALKS OR OTHER PEDESTRIAN FACILITIES ARE BLOCKED, CLOSED OR RELOCATED, TEMPORARY FACILITIES SHALL INCLUDE ACCESSIBILITY FEATURES CONSISTENT WITH THE FEATURES PRESENT IN THE EXISTING PEDESTRIAN FACILITY.
2. TRAFFIC CONTROL DEVICES FOR PEDESTRIAN FLOW ONLY ARE SHOWN. OTHER DEVICES MAY BE NEEDED TO CONTROL VEHICULAR TRAFFIC.
3. "ROAD WORK AHEAD" SIGNS ON SIDE STREETS MAY NOT BE NECESSARY IF SIGNS ON THE MAIN STREET PROVIDE ADEQUATE ADVANCE NOTIFICATION OF THE WORK ZONE. SUPPLEMENTAL STREET NAME PLAQUES MAY BE REQUIRED IF THE SIGNS ARE STAND OR POST MOUNTED.
4. PEDESTRIAN TRAFFIC SIGNAL DISPLAYS CONTROLLING CLOSED CROSSWALKS SHALL BE COVERED, IF APPLICABLE.
5. ADA-COMPLIANT SIDEWALK BARRICADES SHALL HAVE TYPE A FLASHERS IF CONDITIONS DICTATE THE PEDESTRIAN DETOUR REMAIN IN EFFECT AT NIGHT.
6. R9-9, R9-11a, AND M4-9b SIGNS MAY BE MOUNTED TO ADA-COMPLIANT SIDEWALK BARRICADES.

LEGEND	
	DELINEATOR
	SIGN
	FLAGGER
	BARRICADE
	VARIABLE MESSAGE SIGN
	ARROW BOARD
	WORK AREA
	TRAFFIC DIRECTION

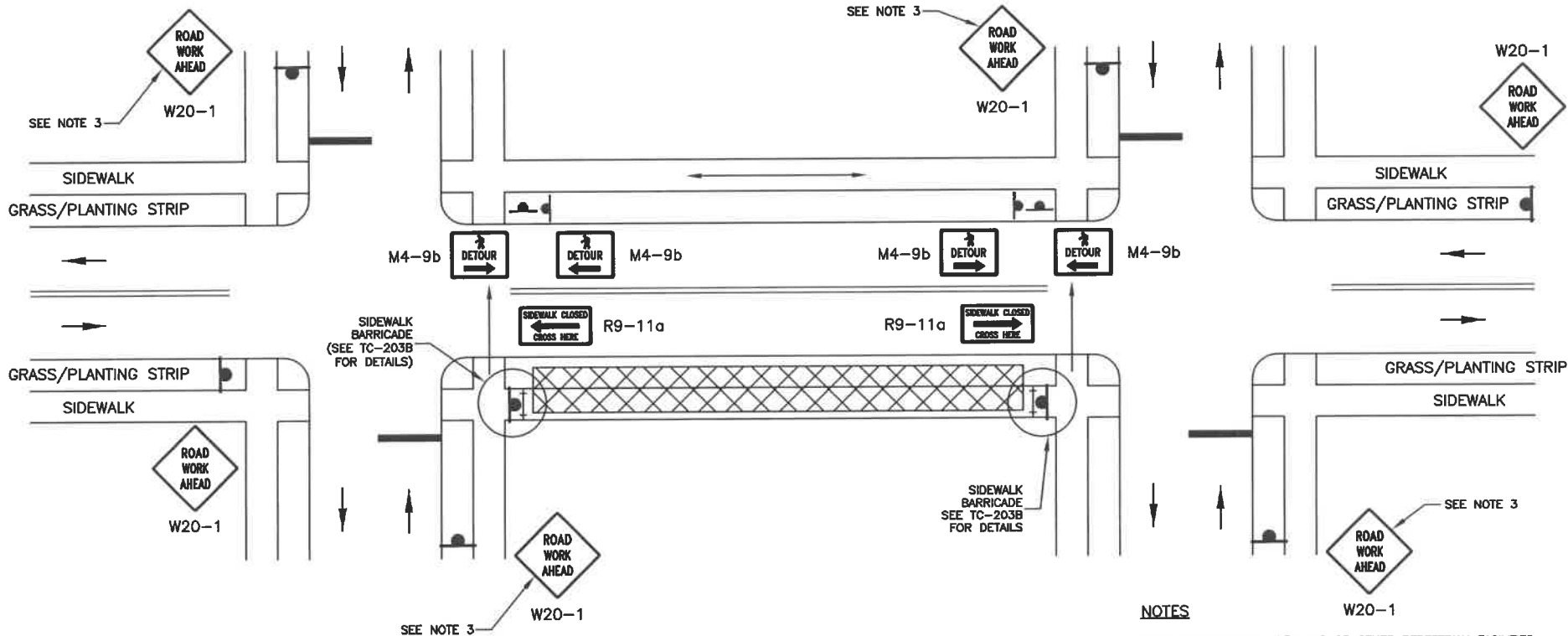
POSTED SPEED LIMIT (MPH)	TAPER LENGTH (L)	DELINEATOR SPACING (TAPER/TAN.)	SIGN SPACING	BUFFER LENGTH
		/		

• REVISIONS •			
NO.	DATE	BY	DESCRIPTION
1	2/2018	JES	Minor modifications
2	9/2020	JES	Added add'l detour sign details



• SIGNATURES •	
Scale: NTS	Drawn by: Joshua Soak
Date: 2/28/2012	Design by: Joshua Soak
File: TC-200.DWG	Approved by: Ross Oyen

• TYPICAL TRAFFIC CONTROL PLAN •		• STANDARD DETAIL NO. •
Pedestrian Traffic Control - Sidewalk Detour		TC-200A



NOTES

1. WHEN CROSSWALKS, SIDEWALKS OR OTHER PEDESTRIAN FACILITIES ARE BLOCKED, CLOSED OR RELOCATED, TEMPORARY FACILITIES SHALL INCLUDE ACCESSIBILITY FEATURES CONSISTENT WITH THE FEATURES PRESENT IN THE EXISTING PEDESTRIAN FACILITY.
2. TRAFFIC CONTROL DEVICES FOR PEDESTRIAN FLOW ONLY ARE SHOWN. OTHER DEVICES MAY BE NEEDED TO CONTROL VEHICULAR TRAFFIC.
3. "ROAD WORK AHEAD" SIGNS ON SIDE STREETS MAY NOT BE NECESSARY IF SIGNS ON THE MAIN STREET PROVIDE ADEQUATE ADVANCE NOTIFICATION OF THE WORK ZONE. SUPPLEMENTAL STREET NAME PLAQUES MAY BE REQUIRED IF THE SIGNS ARE STAND OR POST MOUNTED.
4. PEDESTRIAN TRAFFIC SIGNAL DISPLAYS CONTROLLING CLOSED CROSSWALKS SHALL BE COVERED, IF APPLICABLE.
5. ADA-COMPLIANT SIDEWALK BARRICADES SHALL HAVE TYPE A FLASHERS IF CONDITIONS DICTATE THE PEDESTRIAN DETOUR REMAIN IN EFFECT AT NIGHT.
6. R9-9, R9-11a, AND M4-9b SIGNS MAY BE MOUNTED TO ADA-COMPLIANT SIDEWALK BARRICADES.

LEGEND	
	DELINEATOR
	SIGN
	FLAGGER
	BARRICADE
	VARIABLE MESSAGE SIGN
	ARROW BOARD
	WORK AREA
	TRAFFIC DIRECTION

POSTED SPEED LIMIT (MPH)	TAPER LENGTH (L)	DELINEATOR SPACING (TAPER/TAN.)	SIGN SPACING	BUFFER LENGTH
		/		

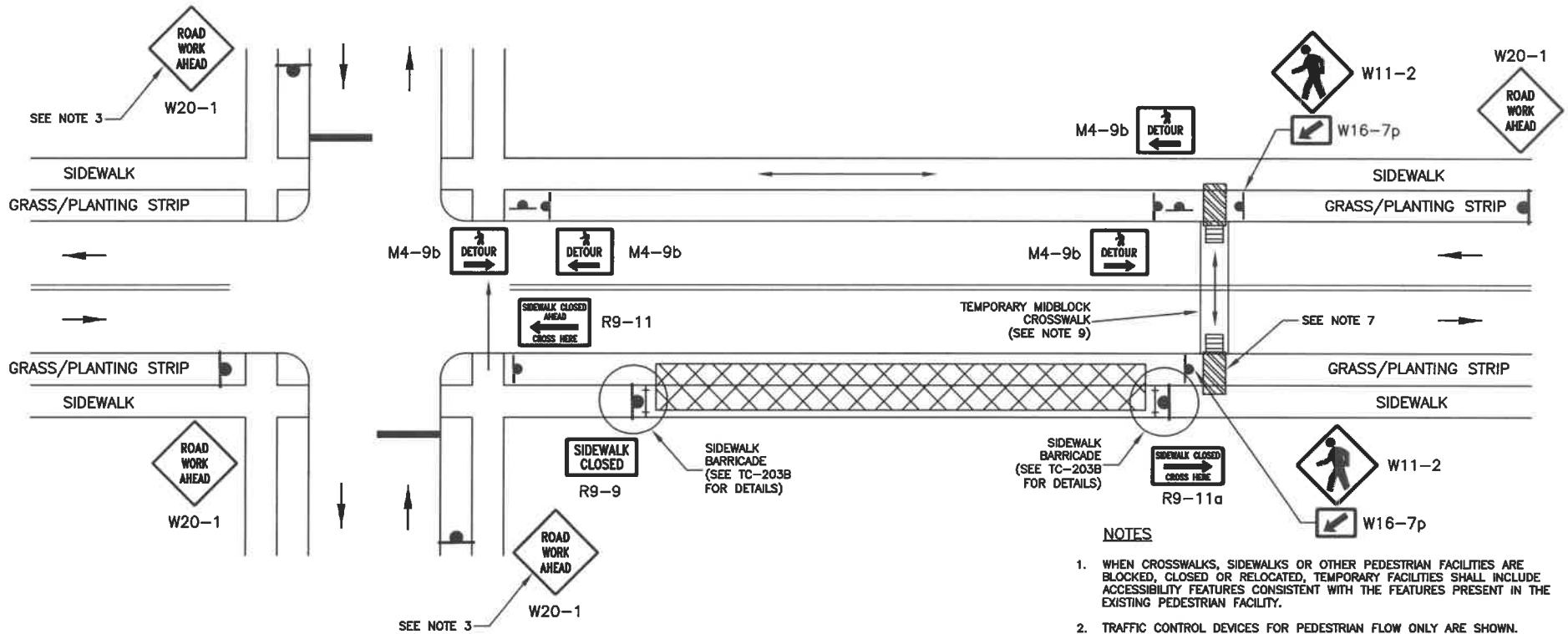
• REVISIONS •			
NO.	DATE	BY	DESCRIPTION
2	2/2019	JES	Minor modifications
1	8/2020	JES	Added odd'l detour sign details



• SIGNATURES •	
Scale: NTS	Drawn By: Joshua Stok
Date: 8/4/2020	Design By: Joshua Stok
File: TC-2008.DWG	Approved By: Ross Oyen

• TYPICAL TRAFFIC CONTROL PLAN •	
Pedestrian Traffic Control -- Sidewalk Detour	

• STANDARD DETAIL NO. •
TC-200B



NOTES

1. WHEN CROSSWALKS, SIDEWALKS OR OTHER PEDESTRIAN FACILITIES ARE BLOCKED, CLOSED OR RELOCATED, TEMPORARY FACILITIES SHALL INCLUDE ACCESSIBILITY FEATURES CONSISTENT WITH THE FEATURES PRESENT IN THE EXISTING PEDESTRIAN FACILITY.
2. TRAFFIC CONTROL DEVICES FOR PEDESTRIAN FLOW ONLY ARE SHOWN. OTHER DEVICES MAY BE NEEDED TO CONTROL VEHICULAR TRAFFIC.
3. "ROAD WORK AHEAD" SIGNS ON SIDE STREETS MAY NOT BE NECESSARY IF SIGNS ON THE MAIN STREET PROVIDE ADEQUATE ADVANCE NOTIFICATION OF THE WORK ZONE. SUPPLEMENTAL STREET NAME PLAQUES MAY BE REQUIRED IF THE SIGNS ARE STAND OR POST MOUNTED.
4. PEDESTRIAN TRAFFIC SIGNAL DISPLAYS CONTROLLING CLOSED CROSSWALKS SHALL BE COVERED, IF APPLICABLE.
5. ADA-COMPLIANT SIDEWALK BARRICADES SHALL HAVE TYPE A FLASHERS IF CONDITIONS DICTATE THE PEDESTRIAN DETOUR REMAIN IN EFFECT AT NIGHT.
6. R9-9, R9-11a, AND M4-9b SIGNS MAY BE MOUNTED TO ADA-COMPLIANT SIDEWALK BARRICADES.
7. SEE TC-203A FOR DETAILS REGARDING TEMPORARY CURB RAMPS.
8. ADVANCE PEDESTRIAN SIGNAGE MAY BE NECESSARY IF APPROPRIATE SIGHT DISTANCE IS NOT ADEQUATE FOR SITE SPECIFIC CONDITIONS.
9. TEMPORARY CROSSWALK MARKINGS MAY BE REQUIRED BY THE TRAFFIC ENGINEER BASED ON SITE SPECIFIC CONDITIONS.

LEGEND

- DELINEATOR
- ▲ SIGN
- FLAGGER
- + + BARRICADE
- |— VARIABLE MESSAGE SIGN
- ▨ TEMP. PED RAMP
- ◀◀◀ ARROW BOARD
- ▩ WORK AREA
- TRAFFIC DIRECTION

POSTED SPEED LIMIT (MPH)	TAPER LENGTH (L)	DELINEATOR SPACING (TAPER/TAN.)	SIGN SPACING	BUFFER LENGTH
		/		

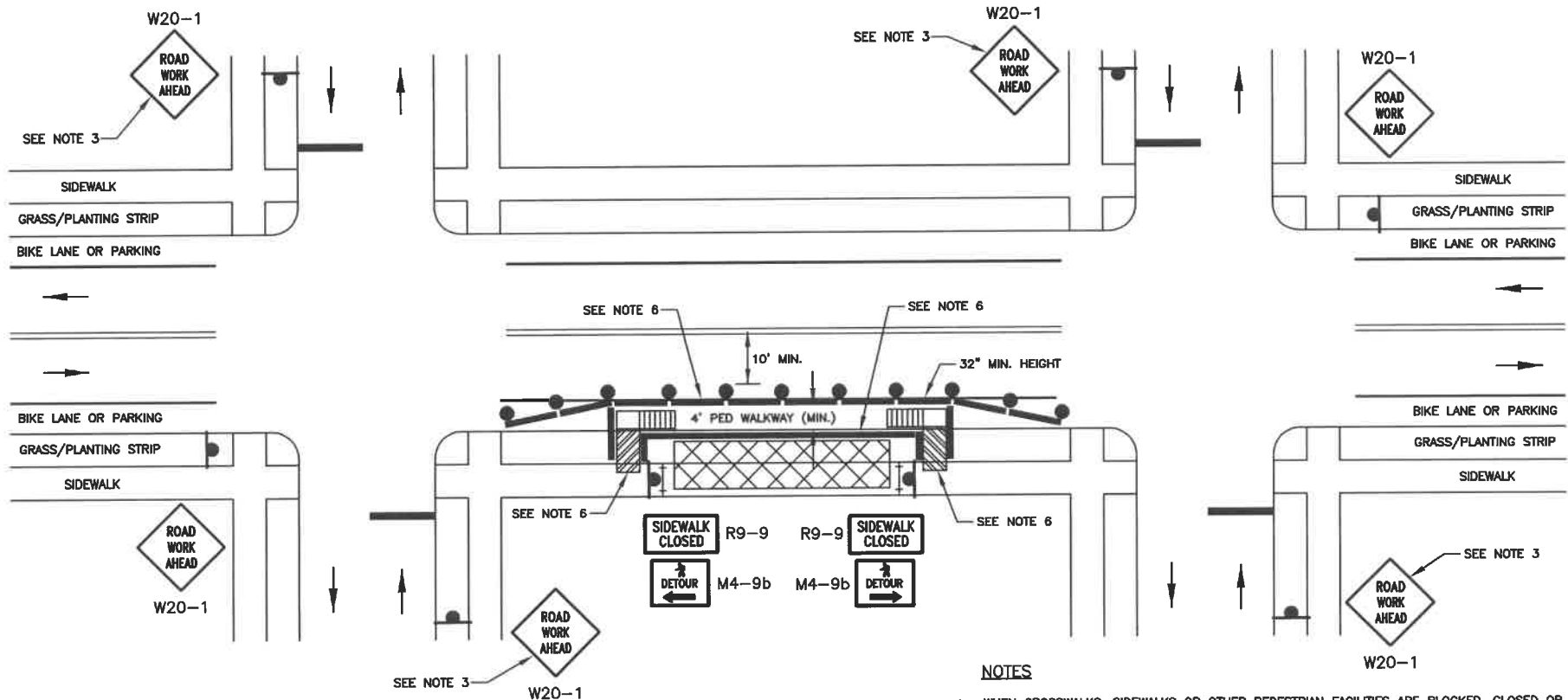
- REVISIONS -			
NO.	DATE	BY	DESCRIPTION



- SIGNATURES -	
Scale: NTS	Drawn By: Joshua Sank
Date: 5/28/2020	Design By: Joshua Sank
File: TC-200C.DWG	Approved By: Ross Oyen

- TYPICAL TRAFFIC CONTROL PLAN -
 Pedestrian Traffic Control - Sidewalk Detour
 w/Midblock Crossing

- STANDARD DETAIL NO. -
 TC-200C



NOTES

1. WHEN CROSSWALKS, SIDEWALKS OR OTHER PEDESTRIAN FACILITIES ARE BLOCKED, CLOSED OR RELOCATED, TEMPORARY FACILITIES SHALL INCLUDE ACCESSIBILITY FEATURES CONSISTENT WITH THE FEATURES PRESENT IN THE EXISTING PEDESTRIAN FACILITY.
2. TRAFFIC CONTROL DEVICES FOR PEDESTRIAN FLOW ONLY ARE SHOWN. OTHER DEVICES MAY BE NEEDED TO CONTROL VEHICULAR TRAFFIC.
3. "ROAD WORK AHEAD" SIGNS ON SIDE STREETS MAY NOT BE NECESSARY IF SIGNS ON THE MAIN STREET PROVIDE ADEQUATE ADVANCE NOTIFICATION OF THE WORK ZONE. SUPPLEMENTAL STREET NAME PLAQUES MAY BE REQUIRED IF THE SIGNS ARE STAND OR POST MOUNTED.
4. LONGITUDINAL CHANNELIZERS WITH APPROPRIATE FLASHERS SHALL NOT BLOCK WATER DRAINAGE FROM THE WALKWAY. GAPS FROM THE ROADWAY SURFACE UP TO 2" MAX. HEIGHT ARE ALLOWED.
5. THE TEMPORARY PEDESTRIAN ACCESS ROUTE WIDTH SHALL BE 48" MIN., 80" OR WIDER PREFERRED. IF ACCESS ROUTE IS LESS THAN 60" WIDE, 60" X 60" PASSING SPACES SHALL BE INSTALLED A MINIMUM OF 200' APART.
6. SEE TC-203A FOR DETAILS REGARDING TEMPORARY CURB RAMP; SEE TC-203B FOR DETAILS REGARDING LONGITUDINAL CHANNELIZERS.
7. ADA-COMPLIANT SIDEWALK BARRICADES SHALL HAVE TYPE A FLASHERS IF CONDITIONS DICTATE THE PEDESTRIAN DETOUR ROUTE REMAIN IN EFFECT AT NIGHT.
8. R9-9 AND M4-9b SIGNS MAY BE MOUNTED TO ADA-COMPLIANT SIDEWALK BARRICADES.

LEGEND

	DELINEATOR		LONGITUDINAL CHANNELIZER
	SIGN		ARROW BOARD
	FLAGGER		WORK AREA
	BARRICADE		TRAFFIC DIRECTION
	VARIABLE MESSAGE SIGN		

POSTED SPEED LIMIT (MPH)	TAPER LENGTH (L)	DELINEATOR SPACING (TAPER/TAN.)	SIGN SPACING	BUFFER LENGTH
		/		

REVISIONS

NO.	DATE	BY	DESCRIPTION
1	2/2019	JES	Minor modifications

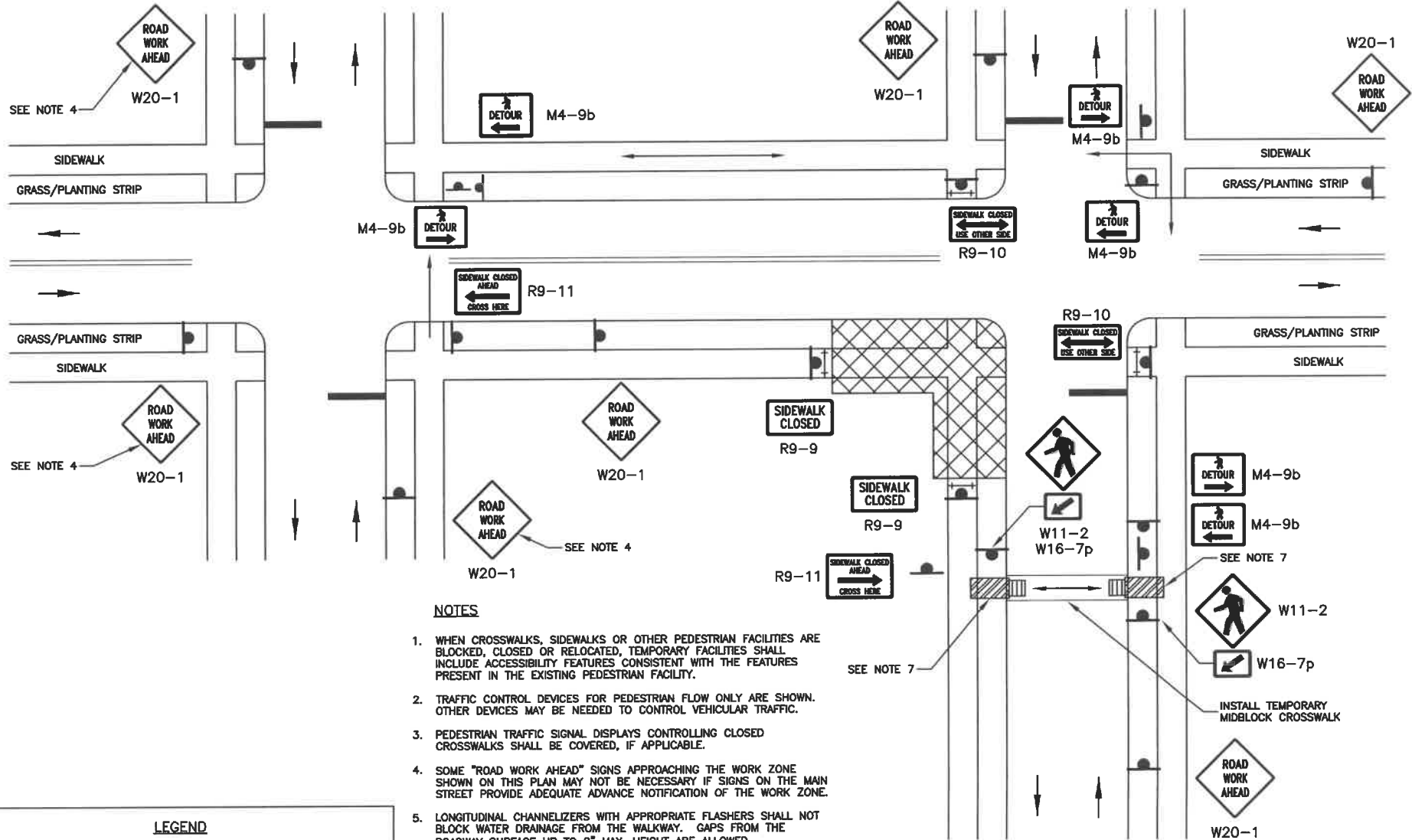


SIGNATURES

Scale: NTS	Drawn By: Jonathan Sault
Date: 3/27/2012	Design By: Jonathan Sault
File: TC-201.DWG	Approved By: Ross Open

TYPICAL TRAFFIC CONTROL PLAN

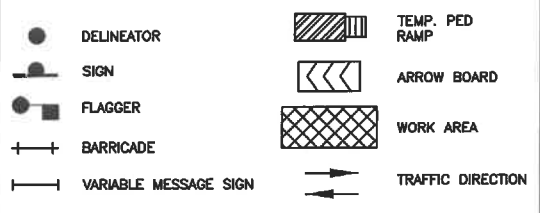
Pedestrian Traffic Control - Sidewalk Diversion w/Barricade		STANDARD DETAIL NO. TC-201
---	--	----------------------------



NOTES

1. WHEN CROSSWALKS, SIDEWALKS OR OTHER PEDESTRIAN FACILITIES ARE BLOCKED, CLOSED OR RELOCATED, TEMPORARY FACILITIES SHALL INCLUDE ACCESSIBILITY FEATURES CONSISTENT WITH THE FEATURES PRESENT IN THE EXISTING PEDESTRIAN FACILITY.
2. TRAFFIC CONTROL DEVICES FOR PEDESTRIAN FLOW ONLY ARE SHOWN. OTHER DEVICES MAY BE NEEDED TO CONTROL VEHICULAR TRAFFIC.
3. PEDESTRIAN TRAFFIC SIGNAL DISPLAYS CONTROLLING CLOSED CROSSWALKS SHALL BE COVERED, IF APPLICABLE.
4. SOME "ROAD WORK AHEAD" SIGNS APPROACHING THE WORK ZONE SHOWN ON THIS PLAN MAY NOT BE NECESSARY IF SIGNS ON THE MAIN STREET PROVIDE ADEQUATE ADVANCE NOTIFICATION OF THE WORK ZONE.
5. LONGITUDINAL CHANNELIZERS WITH APPROPRIATE FLASHERS SHALL NOT BLOCK WATER DRAINAGE FROM THE WALKWAY. GAPS FROM THE ROADWAY SURFACE UP TO 2" MAX. HEIGHT ARE ALLOWED.
6. THE TEMPORARY PEDESTRIAN ACCESS ROUTE WIDTH SHALL BE 48" MIN., 60" OR WIDER PREFERRED. IF ACCESS ROUTE IS LESS THAN 60" WIDE, 60" X 60" PASSING SPACES SHALL BE INSTALLED A MINIMUM OF 20' APART.
7. SEE TC-203A FOR DETAILS REGARDING TEMPORARY CURB RAMPS.
8. ADA-COMPLIANT SIDEWALK BARRICADES SHALL HAVE TYPE A FLASHERS IF CONDITIONS DICTATE THE PEDESTRIAN DETOUR ROUTE REMAIN IN EFFECT AT NIGHT.
9. R9-9, R9-10, R9-11a, and M4-9b SIGNS MAY BE MOUNTED TO ADA-COMPLIANT SIDEWALK BARRICADES.
10. ADVANCE PEDESTRIAN SIGNAGE MAY BE NECESSARY IF APPROPRIATE SIGHT DISTANCE IS NOT ADEQUATE FOR SITE SPECIFIC CONDITIONS.

LEGEND



POSTED SPEED LIMIT (MPH)	TAPER LENGTH (L)	DELINEATOR SPACING (TAPER/TAN.)	SIGN SPACING	BUFFER LENGTH
		/		

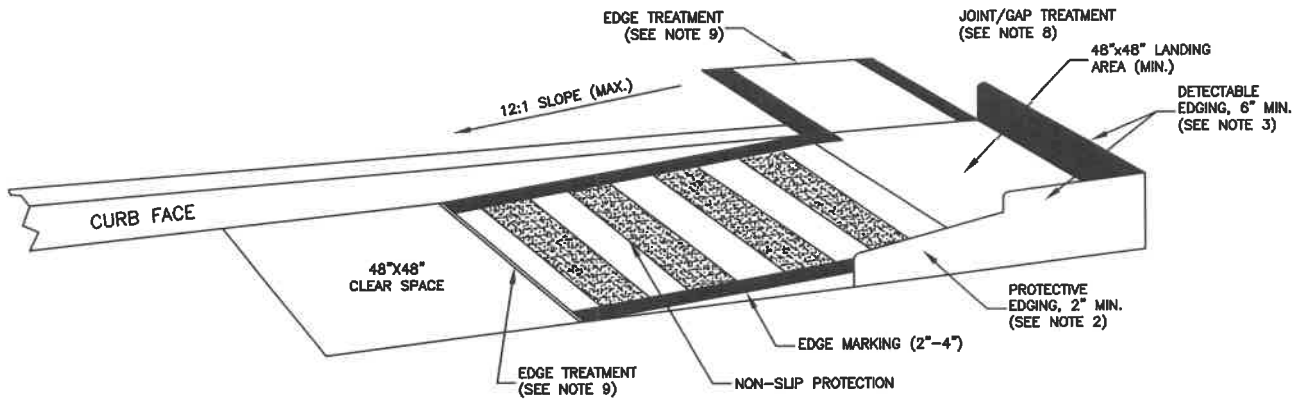
REVISIONS

NO.	DATE	BY	DESCRIPTION
1	2/2018	JES	Minor modifications
2	8/2020	JES	Minor modifications



SIGNATURES

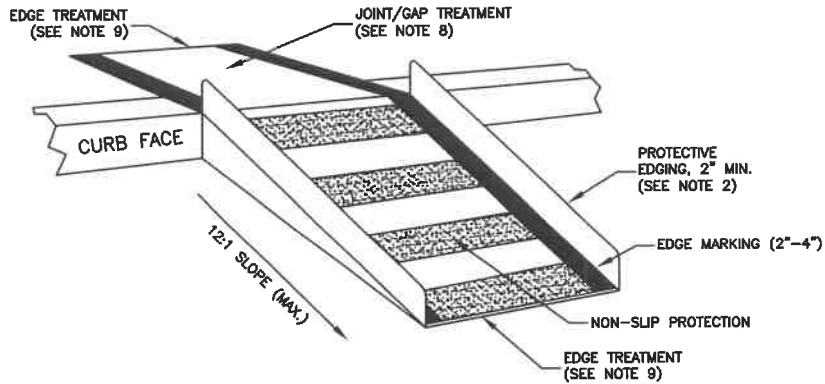
Scale: NTS	Drawn By: Joshua Soak
Date: 3/29/2012	Design By: Joshua Soak
File: TC-202.DWG	Approved By: Rose Oyen



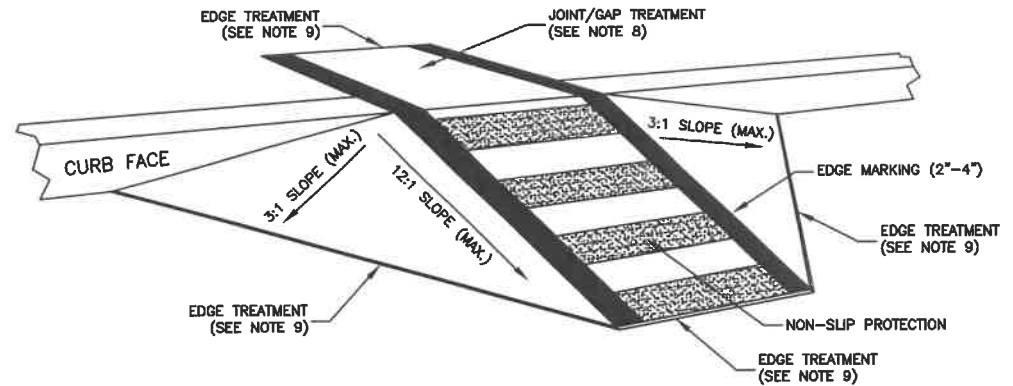
TEMPORARY CURB RAMP - PARALLEL TO CURB

NOTES

1. RAMPS SHALL BE 48" MIN. WIDTH WITH A STABLE, NON-SLIP SURFACE.
2. PROTECTIVE EDGING WITH A 2" MIN. HEIGHT SHALL BE INSTALLED WHEN THE RAMP OR LANDING PLATFORM HAS A VERTICAL DROP OF 6" OR GREATER.
3. DETECTABLE EDGING WITH A 8" MIN. HEIGHT AND CONTRASTING COLOR SHALL BE INSTALLED ON ALL RAMP LANDINGS WHERE THE WALKWAY CHANGES DIRECTION.
4. RAMPS AND LANDINGS SHOULD HAVE A 2% MAX. CROSS SLOPE.
5. CLEAR SPACE OF 48"x48" MIN. SHALL BE PROVIDED ABOVE AND BELOW THE RAMP.
6. THE RAMP WALKWAY EDGE SHALL BE MARKED WITH A CONTRASTING COLOR 2"-4" WIDE.
7. WATER FLOW IN THE GUTTER (WHERE APPLICABLE) SHALL BE MINIMALLY RESTRICTED.
8. LATERAL JOINTS OR GAPS BETWEEN SURFACES SHALL BE LESS THAN 0.5" WIDE.
9. CHANGES BETWEEN SURFACE HEIGHTS SHOULD NOT EXCEED 0.5". LATERAL EDGES SHOULD BE VERTICAL UP TO 0.25" HIGH AND BEVELED AT 1:2 BETWEEN 0.25" AND 0.5" HIGH.



**TEMPORARY CURB RAMP - PERPENDICULAR TO CURB
(WITH PROTECTIVE EDGE)**



**TEMPORARY CURB RAMP - PERPENDICULAR TO CURB
(WITH SIDE APRON)**

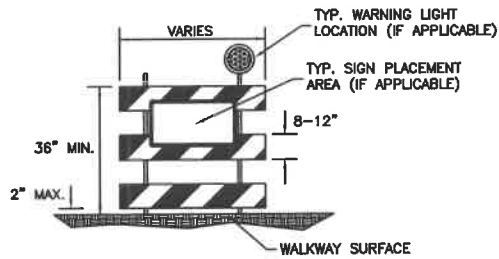
- REVISIONS -			
NO.	DATE	BY	DESCRIPTION



• SIGNATURES •	
Scale: NTS	Drawn By: Joshua Stank
Date: 3/28/2012	Design By: Joshua Stank
File: TC-203A.DWG	Approved By: Ross Ryan

• TYPICAL TRAFFIC CONTROL PLAN •	
Pedestrian Traffic Control -- Temporary Ramp Details	

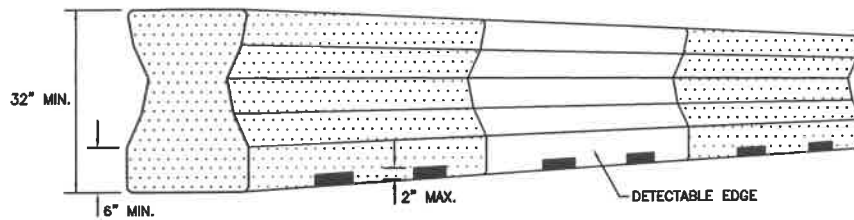
• STANDARD DETAIL NO. •
TC-203A



TYPICAL SIDEWALK BARRICADE

NOTES

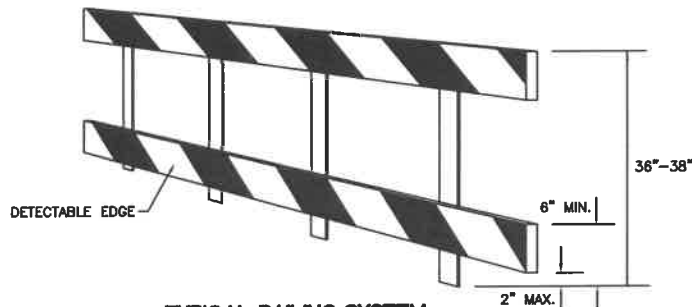
1. BALLAST SHALL BE LOCATED BEHIND THE BARRICADE. ANY SUPPORT ON THE FRONT OF THE BARRICADE SHALL NOT EXTEND INTO THE 48" MIN. WALKWAY CLEAR SPACE.
2. ALL BARRICADES SHALL BE FREE OF SHARP OR ROUGH EDGES AND FASTENERS (BOLTS) SHALL BE ROUNDED TO PREVENT HARM TO HANDS, ARMS OR CLOTHING.
3. WHERE BARRICADES ARE USED TO CLOSE A SIDEWALK, THE BARRICADE SHALL BE PLACED ACROSS THE FULL WIDTH OF THE CLOSED SIDEWALK.



TYPICAL LONGITUDINAL CHANNELIZER
(EXAMPLE)

NOTES

1. DETECTABLE EDGES SHALL BE CONTINUOUS AND AT LEAST SIX INCHES ABOVE THE WALKWAY SURFACE.
2. ALL BARRICADES SHALL HAVE COLOR OR MARKINGS CONTRASTING WITH THE WALKWAY SURFACE.
3. DEVICES SHALL NOT BLOCK WATER DRAINAGE FROM THE ROADWAY. A GAP HEIGHT OR OPENING FROM THE WALKWAY SURFACE UP TO TWO INCHES MAX. HEIGHT IS ALLOWED FOR DRAINAGE.
4. LONGITUDINAL CHANNELIZING DEVICES FOR PEDESTRIANS SHALL BE 32" HIGH OR GREATER.
5. ALL DEVICES USED TO CHANNELIZE PEDESTRIANS SHOULD INTERLOCK AND BE FREE OF SHARP OR ROUGH EDGES TO PREVENT HARM TO HANDS, ARMS OR CLOTHING.



TYPICAL RAILING SYSTEM
(EXAMPLE)

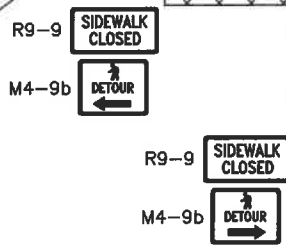
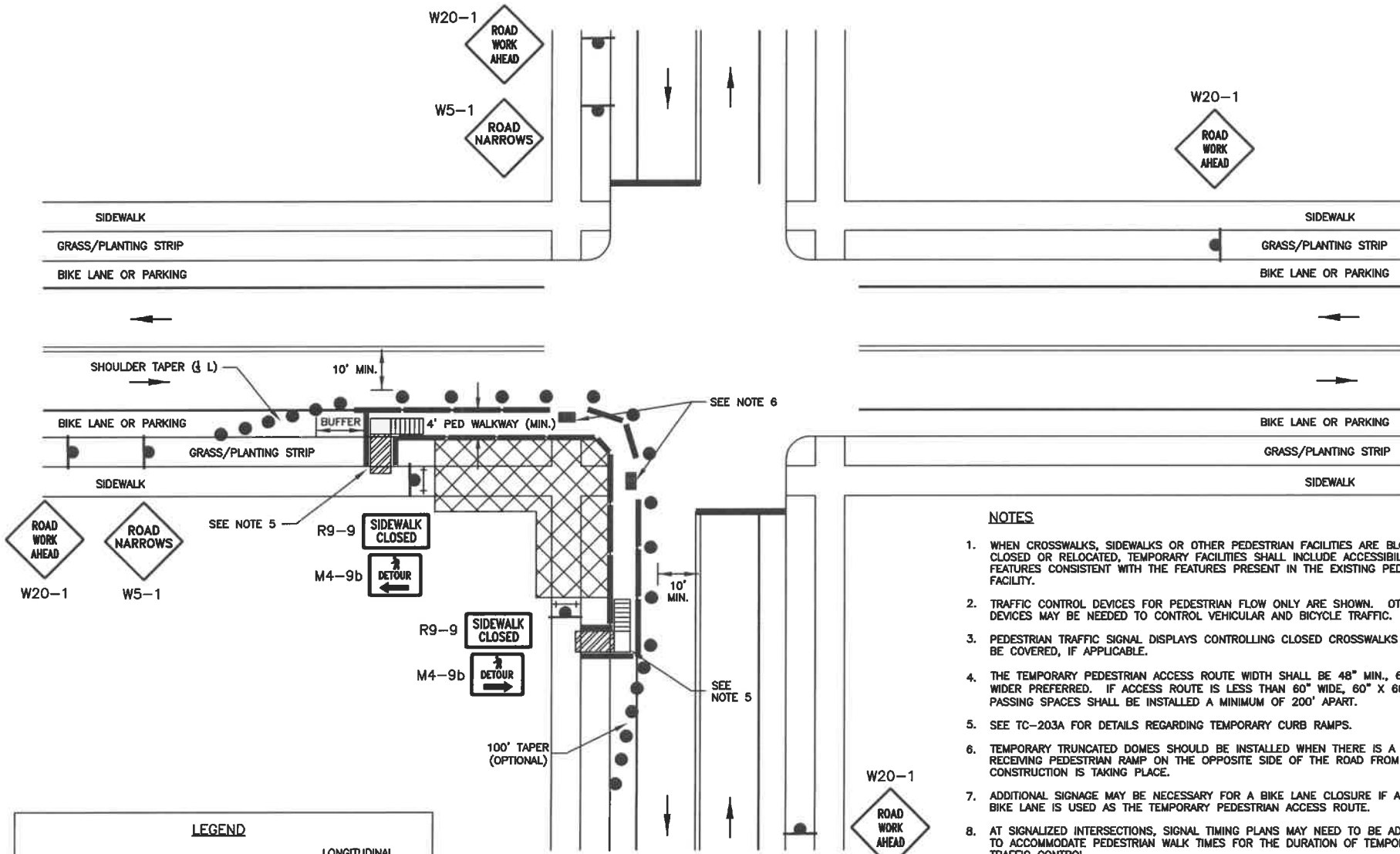
NOTES

1. BALLAST SHALL BE LOCATED BEHIND THE BARRICADE. ANY SUPPORT ON THE FRONT OF THE BARRICADE SHALL NOT EXTEND INTO THE 48" MIN. WALKWAY CLEAR SPACE.
2. DETECTABLE EDGES SHALL BE CONTINUOUS AND NO MORE THAN 2" ABOVE THE ADJACENT PAVED SURFACE. THE DETECTABLE EDGE SHALL EXTEND A MINIMUM OF 6" ABOVE THE ADJACENT PAVED SURFACE.
3. ALL BARRICADES SHALL HAVE COLOR OR MARKINGS CONTRASTING WITH THE WALKWAY SURFACE.
4. DEVICES SHALL NOT BLOCK WATER DRAINAGE FROM THE ROADWAY. A GAP HEIGHT OR OPENING FROM THE WALKWAY SURFACE UP TO TWO INCHES MAX. HEIGHT IS ALLOWED FOR DRAINAGE.
5. WHEN HAND GUIDANCE IS REQUIRED, THE TOP RAIL OR TOP SURFACE SHALL: (1) BE IN A VERTICAL PLANE PERPENDICULAR TO THE WALKWAY ABOVE THE DETECTABLE EDGE; (2) BE CONTINUOUS AT A HEIGHT OF 36 TO 38 INCHES ABOVE THE WALKWAY SURFACE; AND (3) BE SUPPORTED WITH MINIMAL INTERFERENCE TO A PEDESTRIAN'S HANDS OR FINGERS.
6. ALL DEVICES USED TO CHANNELIZE PEDESTRIANS SHOULD INTERLOCK AND BE FREE OF SHARP OR ROUGH EDGES TO PREVENT HARM TO HANDS, ARMS OR CLOTHING.

• REVISIONS •			
NO.	DATE	BY	DESCRIPTION
1			
2			
3			
4			
5			
6			
7			
8			
9			
10			
11			
12			
13			
14			
15			
16			
17			
18			
19			
20			
21			
22			
23			
24			
25			
26			
27			
28			
29			
30			
31			
32			
33			
34			
35			
36			
37			
38			
39			
40			
41			
42			
43			
44			
45			
46			
47			
48			
49			
50			
51			
52			
53			
54			
55			
56			
57			
58			
59			
60			
61			
62			
63			
64			
65			
66			
67			
68			
69			
70			
71			
72			
73			
74			
75			
76			
77			
78			
79			
80			
81			
82			
83			
84			
85			
86			
87			
88			
89			
90			
91			
92			
93			
94			
95			
96			
97			
98			
99			
100			



• SIGNATURES •	
Scale: NTS	Drawn By: Jonathan Saak
Date: 1/25/2013	Design By: Jonathan Saak
File: TC-203B.DWG	Approved By: Rose Oyen



LEGEND

	DELINEATOR		LONGITUDINAL CHANNELIZER
	SIGN		ARROW BOARD
	FLAGGER		WORK AREA
	BARRICADE		TRAFFIC DIRECTION
	VARIABLE MESSAGE SIGN		TEMPORARY TRUNCATED DOME

- NOTES**
- WHEN CROSSWALKS, SIDEWALKS OR OTHER PEDESTRIAN FACILITIES ARE BLOCKED, CLOSED OR RELOCATED, TEMPORARY FACILITIES SHALL INCLUDE ACCESSIBILITY FEATURES CONSISTENT WITH THE FEATURES PRESENT IN THE EXISTING PEDESTRIAN FACILITY.
 - TRAFFIC CONTROL DEVICES FOR PEDESTRIAN FLOW ONLY ARE SHOWN. OTHER DEVICES MAY BE NEEDED TO CONTROL VEHICULAR AND BICYCLE TRAFFIC.
 - PEDESTRIAN TRAFFIC SIGNAL DISPLAYS CONTROLLING CLOSED CROSSWALKS SHALL BE COVERED, IF APPLICABLE.
 - THE TEMPORARY PEDESTRIAN ACCESS ROUTE WIDTH SHALL BE 48" MIN., 60" OR WIDER PREFERRED. IF ACCESS ROUTE IS LESS THAN 60" WIDE, 60" X 60" PASSING SPACES SHALL BE INSTALLED A MINIMUM OF 200' APART.
 - SEE TC-203A FOR DETAILS REGARDING TEMPORARY CURB RAMPS.
 - TEMPORARY TRUNCATED DOMES SHOULD BE INSTALLED WHEN THERE IS A RECEIVING PEDESTRIAN RAMP ON THE OPPOSITE SIDE OF THE ROAD FROM WHERE CONSTRUCTION IS TAKING PLACE.
 - ADDITIONAL SIGNAGE MAY BE NECESSARY FOR A BIKE LANE CLOSURE IF A MARKED BIKE LANE IS USED AS THE TEMPORARY PEDESTRIAN ACCESS ROUTE.
 - AT SIGNALIZED INTERSECTIONS, SIGNAL TIMING PLANS MAY NEED TO BE ADJUSTED TO ACCOMMODATE PEDESTRIAN WALK TIMES FOR THE DURATION OF TEMPORARY TRAFFIC CONTROL.
 - ADA-COMPLIANT SIDEWALK BARRICADES SHALL HAVE TYPE A FLASHERS IF CONDITIONS DICTATE THE PEDESTRIAN DETOUR ROUTE REMAIN IN EFFECT AT NIGHT.
 - R9-9 AND M4-9b SIGNS MAY BE MOUNTED TO ADA-COMPLIANT SIDEWALK BARRICADES.

POSTED SPEED LIMIT (MPH)	SHOULDER TAPER LENGTH (L)	DELINEATOR SPACING (TAPER/TAN.)	SIGN SPACING	BUFFER LENGTH
		/		

REVISIONS

NO.	DATE	BY	DESCRIPTION
1	1/2018	JES	Minor note changes.
2	2/2018	JES	Minor revisions.
3	8/2020	JES	Minor revisions to accessible route details.



SIGNATURES

Scale: NTS	Drawn By: Joshua Soak
Date: 3/28/2012	Design By: Joshua Soak
File: TC-204.DWG	Approved By: Ross Oym